



University of Idaho  
Extension



HEAD



HEART



HANDS



HEALTH

## August 2023

### INSIDE THIS ISSUE:

Latah Updates .....	1
County Opportunities .....	2-4
Calendar.....	5

UI Extension, Latah County  
 200 S. Almon Street, Suite 201  
 Moscow, ID 83843  
 Phone: 208-883-2267  
 Fax: 208-882-8505  
 Email: [latah@uidaho.edu](mailto:latah@uidaho.edu)

4-H Youth Development  
 Jessie Van Buren, 4-H Educator  
 Phone: 208-883-2267  
 Email: [jvanburen@uidaho.edu](mailto:jvanburen@uidaho.edu)  
 Follow 4-H on Facebook @LatahCounty4H

# LATAH COUNTY 4-H NEWSLETTER

“To Make the Best Better”

## LATAH COUNTY 4-H OFFICE

Summer has flown by, and that means fair is just around the corner! I want to make sure to remind you to register for fair if you have any sort of animal to exhibit or a camper! This is a high priority for the next few days as the deadline is August 11! Our office will be busy this month and next preparing for fair and putting on pre-fair shows, so please be patient if response times are a little longer than usual. There are quite a few events this month and next, so be sure to update your calendars! A lot of things are happening, but like always if you have any questions, feel free to email me or call the office.

*-Jessie Van Buren*

## Latah County Fair and Events Center

1021 Harold St, Moscow, Idaho 83843  
 (208) 883-5722 fair@latahcountyid.gov www.latahcountyfair.com

Register NOW!!

<http://latah.fairwire.com>

There is now a single place to register all animals and campers that are attending the 2023 Fair.

Detailed instructions are available at <https://www.latahcountyfair.com/p/fair/register>

### You will need:

- Tag #s for market animals
- Scrapie tag #s for Sheep/Goat
- Name/Address of breeder
- Camper length, make/model, license plate
- Credit Card

Due by August 11, 2023.

**If you miss this deadline, you WILL NOT attend Fair.**

## LATAH FAIRGROUNDS RECEIVES \$100,000 AGWEST FARM CREDIT GRANT

Funds to be used for Fairgrounds and Livestock Facility Improvements

The Latah County Fairgrounds has been awarded \$100,000.00 for fairgrounds enhancements as part of AgWest Farm Credit’s Local Advisory Committee (LAC) Guided Stewardship Funds program. These funds will be used for:

- Installation of a cement floor in the Rabbit/Poultry/Goat Barn
- New fencing and arena in the Show/Sale Barn for the swine show, livestock auction, and Small Animal Round Robin
- New alleyways to connect the Show/Sale Barn and the Swine Barn
- New fences for the large livestock show arena and holding area
- New “traffic patterns” for moving animals between barns and arenas
- New market turkey pens

The new panel and gate systems will all be uniform, interchangeable, and portable so they will greatly expand the ability of the Fairgrounds to host more livestock based events and provide a better and easier experience for the 4-H and FFA youth during Fair, and other patrons of the Fairgrounds during the year.

These funds are part of a large donation granted to 40 organizations across the AgWest territory. As a cooperative, AgWest’s purpose is to champion agriculture by serving as the most trusted resource, helping their customers, employees and communities thrive. In pursuit of this purpose, stewardship investments are made in a variety of ways to support rural communities. This investment of resources is guided by LAC members, who serve as a liaison between AgWest and their customers and communities.

The new materials are scheduled to be in place for the 2023 Latah County Fair “Plaid & Pearls on the Palouse”, September 14-17, 2023.

**\*\*Thank you cards from youth, parents, leaders, and advisors can be sent to: AgWest Farm Credit, Attn: Mandy Minick, 2001 S. Flint Rd., Spokane, WA 99224\*\***

# General Opportunities



LATAH COUNTY 4-H

## Horse Showmanship Competition

Thursday, August 24, 2023

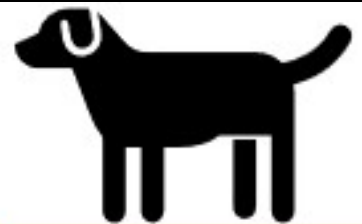
Check-in begins - 6:30pm

Show - 7:00pm

LATAH COUNTY FAIRGROUNDS

Registration will be in ZSuite Events!

Always keep your horse under control, clean up after your animal, and bring a bucket for water. Riding is not permitted on the fairgrounds. This will be a showmanship only competition for youth to complete their project and to determine the Round Robin Horse Showperson. Completing showmanship at another Horse Show can count towards project completion with approval from the Extension Office (Jessie).



LATAH COUNTY 4-H

## Cat & Dog Shows

Wednesday, August 2 & 9, 2023

Cat - 6:00pm; Dog - 5:00pm

LATAH COUNTY FAIRGROUNDS

Registration will be in ZSuite Events!

Arrive 30 minutes before the show to check-in. Keep your animal on a leash and under control at all times. Clean up after your animal and bring a water and food dish. Animals must be current on vaccinations to show.

LATAH COUNTY 4-H

## Sewing Projects

Fashion Orientation - August 23, 6:00pm, Fairgrounds

Bring your clothing commentaries to orientation or email to [vanburen@uidaho.edu](mailto:vanburen@uidaho.edu) prior to the meeting.

Fashion Review - August 30, Fairgrounds

Arrive 15 minutes prior to your selected modeling time. Bring your outfit and accessories to change into or come dressed.

Book & Project DUE - September 5, 5:00pm

All clothing and other sewing projects are due to the Extension Office by 5:00pm.

Style Review - September 14, 5:00pm, Fairgrounds

Arrive at the Large Room at 4:15pm to pick up your sewn items. You will change at the Events Center prior to Style Review.



To foster the development of life skills essential to the cognitive, social, emotional and physical growth of youth 5 to 7 years old.

LATAH COUNTY 4-H

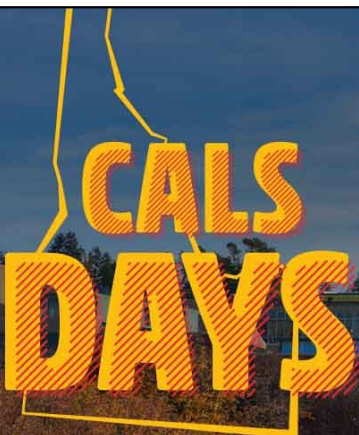
## CLOVERBUD ACTIVITY EXTRAVAGANZA

THURSDAY, AUGUST 10, 2023

5:30PM-7:45PM

LATAH COUNTY FAIRGROUNDS

Activities from leaders in the county will be offered for youth to choose from. Leaders Council will be supplying dinner for the participants and volunteers!



CALS Days 2023 — Sept. 22-24

CALS Days offers high school students the chance to experience college life, compete in livestock and dairy judging and family and consumer sciences events, meet faculty, staff and students, and learn about everything the University of Idaho College of Agricultural and Life Sciences has to offer.

Questions? Please contact CALS Academic Programs at 208-885-7984 or [cals-advising@uidaho.edu](mailto:cals-advising@uidaho.edu).

# Livestock Opportunities

## From Latah Market Animal Sale Committee:

LMAS is looking for livestock exhibitors to help market the 2023 Latah Market Animal Sale during the August 26th Moscow Farmers Market! This is an excellent opportunity to invite potential buyers to the sale and educate the public about your project! If you are interested in this outreach, please email [livestockmarketsale@gmail.com](mailto:livestockmarketsale@gmail.com) no later than Aug. 20th with questions and/or to let us know you can help and we'll be back in touch with more details on exact time.



## Market Swine project

Families participating in a Market Swine project who plan to exhibit market swine at county fairs are invited to be part of a research project by filling out and completing a 19 question survey. We are interested in learning more about the husbandry techniques used by those who participate in the Market Swine project.

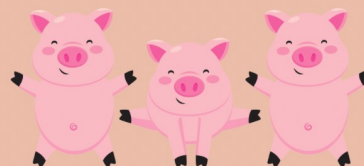
### Project Title: Exploring Best Management Practices for 4-H Market Swine

Project Leads: Cheyanne Myers, Canyon County Extension Educator and Dr. Lauren Christensen, DVM and Assistant Professor UI College of Agricultural and Life Sciences

Research question: To what extent is there a correlation between best management practices and animals that meet county fair requirements for market weight in the swine project?

If you are interested in being apart of this project and for more information please scan the QR code presented or search 2023 Best Swine Practices Survey on Z-Suites to fill out the survery!

contact Cheyanne Myers at [cheyanne@uidaho.edu](mailto:cheyanne@uidaho.edu) for questions



# LATAH COUNTY BEEF PROJECT

## UPCOMING MEETINGS

**30 JUL** **CLIPPING AND FITTING**  
AT KNOTT RESIDENCE- 8PM  
Bring your animal to clip and prepare for the Palouse Classic.

**4 AUG** **WSU LIVESTOCK JUDGING MINI-CAMP  
PALOUSE PREVIEW- SHOWMANSHIP**  
AT LATAH COUNTY FAIRGROUNDS  
Enter at [www.palouseclassic.com](http://www.palouseclassic.com) (Late Fees after July 22)

**5 AUG** **PALOUSE CLASSIC LIVESTOCK SHOW**  
AT LATAH COUNTY FAIRGROUNDS

**11 AUG** **FAIR FUN FRIDAY- BEEF**  
AT LATAH COUNTY FAIRGROUNDS

**20 AUG** **SHOWMANSHIP PRACTICE**  
AT SMITH RESIDENCE - 6-30 PM

**27 AUG** **SHOWMANSHIP PRACTICE**  
AT SMITH RESIDENCE - 6-30 PM

**3 SEPT** **SHOWMANSHIP PRACTICE**  
AT SMITH RESIDENCE- 6-30 PM

All Latah County 4-H and FFA Beef Project Members are invited to participate. Golden Go-4's membership is optional, you can stay with your community club and attend these beef meetings as they fit your schedule.

Contact: Mauri & Punk Knott [mauriknott@gmail.com](mailto:mauriknott@gmail.com) or SheilAnne Smith [ssheilanne@gmail.com](mailto:ssheilanne@gmail.com)

## Record Book Requirement Reminders:

- Market beef, sheep, goat, and swine projects will need to include a Bill of Sale in their record book. Examples are available in ZSuite or at the Extension Office.
- Large animals will need to include the Animal Science Checklist (beef, sheep, goat, and swine for market and breeding projects).
- Dairy and small animal projects will need to complete 5 animal science activities that are relevant to their project.

[Project Requirement Handbook](#)

# Livestock Opportunities

## WSU Livestock Judging Camp

Washington State University is sponsoring a livestock judging mini camp on August 4th at the Latah County Fairgrounds. Check in begins at 8:30am and the clinic will end at 5:00pm. Cost is \$50 for youth and \$20 for adults until July 22, and then there are late fees. You can complete your registration online here: [Palouse Classic | Showman](#). If any leaders are wanting to attend, please reach out to the Extension Office as we may be able to reimburse your registration fees.



## Youth Livestock Judging Mini-Camp

*Focused on Oral Reasons*

August 4, 2023 9:00 am – 5:00 pm

Latah County Fairgrounds, Moscow, ID

Held in conjunction with the Palouse Classic Jackpot



- One-on-one instruction from National Champion evaluators
  - o Including members of the 2023 Texas Tech Livestock Judging Team
- Quality livestock from all species
- Detailed resources that you can reference in the future
- Small contest with prizes to test the skills you learn
- Lunch provided



Registration Fee: \$50 per student, \$20 per parent/advisor  
Register on the Showman App

Coordinator:

Dr. Blake Foraker, [blake.foraker@wsu.edu](mailto:blake.foraker@wsu.edu), 509-335-4112

## Palouse Preview & Classic

The Palouse Preview is offered the evening of Friday, August 4 at the Latah County Fairgrounds. This show was created for youth that live in the nearby region to hone their showmanship skills. Judges work with participants to further develop showmanship techniques and answer any questions youth have.

The Palouse Classic is on Saturday, August 5 and is open to youth from across the country to compete in livestock showing. Very talented youth participate in this show and are often willing to answer questions from other youth that attend to watch.

For youth interested in learning more about showmanship but not able to bring an animal to compete are highly encouraged to attend, watch, and ask questions!

This is the first step in “see one, do one, teach one”!

Participants can register here: [Palouse Classic | Showman](#)

## Latah County Fair and Events Center

### Fair Fun Fridays

New this year, the Latah County Fair Board is working with the University of Idaho and Latah County 4-H to offer Fair Fun Fridays. For the last three Fridays in the month of August, there will be a showmanship clinic and practice show to prepare for fair. Check in will begin at 5:30pm, the clinic will be at 6:30pm, and the practice show will be at 7:00pm. The registration fee is \$10 at the door.

August 11—Beef

August 18—Swine

August 25—Sheep/Goats

# 2023 Dates to Remember

August 2	Latah County Fairgrounds	Cat Show (County)
August 4	Latah County Fairgrounds	WSU Judging Camp (Regional)
August 4-5	Lewis County Fairgrounds	Palouse Preview & Classic (Regional)
August 9	Latah County Fairgrounds	Dog Show (County)
August 10	Latah County Fairgrounds	Cloverbud Activity Extravaganza (County)
<b>August 11</b>	<b>Online</b>	<b>Fair Registration DUE (County)</b>
August 11	Latah County Fairgrounds	Fair Fun Friday—Beef
August 18	Latah County Fairgrounds	Fair Fun Friday— Swine
August 23	Latah County Fairgrounds	Fashion Review Orientation (County)
August 24	Latah County Fairgrounds	Horse Show—Showmanship (County)
August 25	Latah County Fairgrounds	Fair Fun Friday— Sheep/Goat
August 30	Latah County Fairgrounds	Fashion Review (County)
<b>September 5</b>	<b>Extension Office</b>	<b>Sewing and non-market animal books DUE (County)</b>
September 13-17	Latah County Fairgrounds	Latah County Fair (County)
September 25	Latah County Fairgrounds	Leaders Meetings (County)
October 16	<b>Extension Office</b>	<b>Club financial reporting DUE (County)</b>
November 5	Latah County Fairgrounds	Awards Night (County)
November 27	Latah County Fairgrounds	Leaders Meetings (County)

## Summer Programming!

<b>Wednesday, August 2</b>	10:00am	Potlatch - Lions Club Park	SPIKE Robotics
<b>Thursday, August 3</b>	10:00am	Genesee Firehouse	SPIKE Robotics
<b>Monday, August 7</b>	2:00pm	Latah Fairgrounds, Grange	Bees & Bugs

Summer programs are open to all youth in the county – enrollment in 4-H is not a requirement. Summer programs are being offered at no cost to participants but often have limited space and supplies. Please RSVP at the link below to reserve your seat. <https://4h.zsuite.org/external-event-registration/21340>