

# Forage Pests Identification and Control



By Mir M Seyedbagheri

University of Idaho, Elmore Extension

# FORAGE PESTS

## Alfalfa Caterpillar:

- Larvae are velvety, green caterpillars up to 38 mm long.
- They have a narrow, white stripe on each side of the body through which runs a fine, pale red stripe.
- The larvae eat alfalfa leaves
- Adults are butterflies with yellow or white wings having a black border.



# FORAGE PESTS

- Army Cutworm: up to 40 mm long. It has a light brownish-gray head with pale brown spots. The body is pale grayish with white splotches and a brown-tinged top line.
- Alfalfa Looper: light to dark green ; about 35 mm long



Adults are gray “miller” moths

**Host plants: cabbage, spinach, sugarbeets, peas, celery, potatoes, alfalfa, beans, ornamentals, mint.**



# Alfalfa Seed Chalcid

- Adults are tiny black wasps about 2 mm long.
- Larvae are white, legless, C-shaped grubs about 2 mm long.
- The female wasp lays eggs in alfalfa seed, and the larva consumes the inside of the seed.



# FORAGE PESTS

- Alfalfa Weevil: Newly hatched larvae are dingy yellow but soon become green with a shiny black head and prominent white stripe along the middle of the back. Adults feed on foliage. Larvae feed within leaf buds of the terminal growth and skeletonize leaves.
- Black Cutworm/Greasy Cutworm
- Mature larvae are pale gray to black caterpillars up to 40 mm long.



**Host plants: corn, sugarbeets, potatoes, beans, grasses, alfalfa.**

# FORAGE PESTS

- Blue Alfalfa Aphid: bluish green and 3 to 3.5 mm long. It is generally abundant in early season or cooler weather
- Brown Wheat Mite: Dark mites, 1 mm long, with front legs longer than the body. Feeding injury causes a mottling of the leaves giving them a bronzed or yellow appearance.



**Host plants: peas, lentils, alfalfa, clover, wild legumes**



**Host plants: cereals, onions, carrots, alfalfa, iris, gladiolus.**

# FORAGE PESTS

- Clover Leaf Weevil: Larvae are green with a dark brown head and a white stripe down the back. Adults are brown, up to 10 mm long, and have a long snout.
- False Chinch Bugs: Adults are grayish-brown, narrow-bodied, and about 4 mm long. Nymphs are stubby, up to 3 mm long, gray, and with minute red markings.



**Host plants: alfalfa, clover, cereals, grasses, potatoes, sugarbeets, several weeds.**



# Clover Root Curculio

- A fat C-shaped larvae ; legless grubs about 5 to 6 mm long.
- They are white with a brown head.
- Adults are short, slender weevils 3 to 5 mm long with short, broad snouts. They are brownish-black and covered with grayish hair and scales.





# FORAGE PESTS

- English Grain Aphid: green, yellowish-green, red, or purple aphids are 2.5 to 3 mm long
- infest leaves early but suck sap from grain heads as soon as heads emerge
- European Earwig: Adults are 18 mm long. The body is reddish-brown and will skeletonize leaves



# FORAGE PESTS

- Lygus Bugs: Adult lygus bugs are 6 to 7 mm long
- Easily recognized marking is a yellowish, triangular-shaped area on top of the body at the base of the wings.
- Nuttall Blister Beetle: Adults are metallic green or purplish beetles; 16.5 to 28 mm long



**Host plants: alfalfa, corn, potatoes, beans, peas, onions, carrots, peppers, radishes, cereals, ornamentals.**

# FORAGE PESTS

- Pea Aphid: a large aphid, about 3.5 to 4 mm long. Also a vector of several legume virus diseases
- Pea Leaf Weevil: Adults are grayish-brown, slender weevils about 5 mm long with a short snout.
- Can defoliate new-seeding alfalfa, causing stand loss or death



Host plants: alfalfa, red clover, peas, lentils, vetch.



# FORAGE PESTS

- Spotted Alfalfa Aphid: 2 mm long, pale yellow, and has four to six rows of dark spots on its back.
- Its toxic saliva kills seedling plants
- Stinkbugs: Adults are green, gray, or brown; shield-shaped; and about 15 mm long.

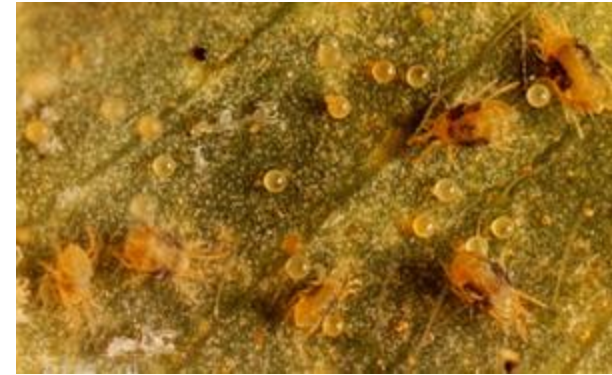


Host plants: alfalfa, beans, cow peas, cereals, peas, corn, fruits.



# FORAGE PESTS

- Two-spotted spidermite: eight-legged mites are lemon green in color and have a black spot on both sides of their bodies
- Western Flower Thrips: cigar-shaped and around 2 mm long. Adults are tan, and nymphs are white.



Host plants: alfalfa, beans, peas, sugarbeets, potatoes, ornamentals, fruit, cereals, corn.



Host plants: beans, peas, corn, cereals, potatoes, alfalfa.

# FORAGE PESTS

- Western Yellowstriped Armyworm: 50 mm long with velvety black stripes on top and yellow stripes on bottom
- Wheat Stem Maggots: Adults are small flies, about 5 mm long, and light to dark green with a dark stripe on top of the thorax. Larvae are pale green maggots up to 6 mm long.



Host plants: peas, beans, lentils, alfalfa, sugarbeets, potatoes.



Brought to you by  
University of Idaho Elmore Extension

If you have any questions about this presentation or other publications, please call:  
587-2136 Ext-509

[elmore@uidaho.edu](mailto:elmore@uidaho.edu)

Pasture Establishment presentations:

Forage Harvest Management

Pasture Soil Fertility

# Recommended Websites

1. UC Davis.edu: *Alfalfa Year-Round IPM Program; Annual Checklist.*

[www.ipm.ucdavis.edu/PMG/C001/alfalfa-checklist.pdf](http://www.ipm.ucdavis.edu/PMG/C001/alfalfa-checklist.pdf)

1. University of Idaho Extension website,  
<http://www.extension.uidaho.edu/crops.asp>

2. Forage Crops and Pasture publications:

<http://www.extension.uidaho.edu/resources2.asp?title=CROP%20PRODUCTION&category1=Crops&category2=Forage%20Crops%20and%20Pasture&color=91A967&font=4B5F27>