



EASTERN IDAHO

PEST ALERT

BANNOCK, BINGHAM, BONNEVILLE, CASSIA, FREMONT, JEFFERSON, AND MADISON COUNTIES

INSIDE THE ISSUE



GOOD

PG 3



BAD

PG 2



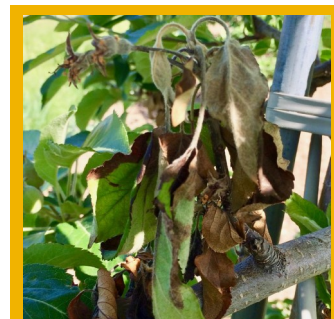
PHOTO OF THE WEEK

PG 8



CODLING MOTH

PG 4



FIREBLIGHT

PG 7

Powdery Mildew in Cucurbits

By Ron Patterson, Extension Educator

We had quite a bout with powdery mildew this spring as growing conditions were just right. Now that it is quite warm at night and humidity is quite low the powdery mildew pressure has dropped off. But it will come back with a vengeance this fall as temperatures start to cool again.

Prevention

Practices that reduce powdery mildew infection include:

- Select powdery mildew resistant cultivars (a little late for this now)

- Reduce canopy humidity—here is a video on a pruning practice that will help reduce canopy humidity <https://www.youtube.com/watch?v=yzs-VEtllx0>

- Avoid high nitrogen fertilization in late summer/fall

- Avoid overhead watering

- Remove and destroy infected plant material—if it is composted the temperature needs to be around 160F to reduce survival of the overwintering bodies



Pictures: Lena Allen

Control

Sometime application of a fungicide may be necessary.

- Be sure powdery mildew is listed on the label

- Check the label for application instructions and frequency

- Observe the pre-harvest interval as indicated on the label

The pre-harvest interval may be several days. Harvest the fruit heavily to give yourself time to have safe produce again.



Fall Crops

By Ron Patterson, Extension Educator

Fall is a great time to give your garden a second wind. If you think about those plants you try to get producing before the summer heat, those plants will do well, even better, in the fall than the spring.

To be successful with fall crops you need to be aware of when is the latest you can plant for a reasonable chance of success. Depending on where you live in eastern Idaho you could be anywhere from 4 to 10 weeks from your average first frost. Johnny's Selected Seeds has a pretty cool tool on this webpage: <https://www.johnnyseeds.com/growers-library/methods-tools-supplies/market-gardening/succession-planting-interval-chart-vegetables.html>

When I first went through it I was a little confused with their terminology. Here is a table based on their information. A row cover can be used to extend the fall season 2 - 4 weeks beyond the first frost date, except for cucumbers.



Crop	Succession planting interval	Latest time to plant without protection (weeks before first frost)	Production notes
Baby leaf greens	7 days	4	Use a row cover to protect seedlings
Radishes	7 days	4	Use a row cover to protect seedlings
Spinach	7 days	2	Use a row cover to protect seedlings
Arugula	14 days	4	Use a row cover to protect seedlings
Turnips	14 days	6	Use a row cover to protect seedlings
Cucumbers (short season)	21 days	6	Use a row cover to protect seedlings

Codling Moth:

Conventional production options

High fruit damage in past years:

- o Apply the first application for either Option A (insecticide) or Option B (oil) at the listed date.
- o For Option A, repeat the insecticide spray 14 days later, for a total of 2 applications in the first generation.
- o For Option B, apply the insecticide spray at the listed date once.
- o When the “start date” for the 2nd generation is provided, spray every 10-18 days until Sept. 15.
- o Pick a different product to use for each generation.

Low fruit damage in past years:

- o Apply the first application for either Option A (insecticide) or Option B (oil) at the listed date.
- o For Option A, do not spray again.
- o For Option B, apply insecticide at the listed date.
- o Wait until the “start date” for the 2nd generation is provided, and spray on that date, and repeat 14 days later, for a total of 2 sprays.
- o Do the same for the 3rd generation.

Pick a different product to use for each generation.

Organic production options (other than bagging)

High fruit damage in past years:

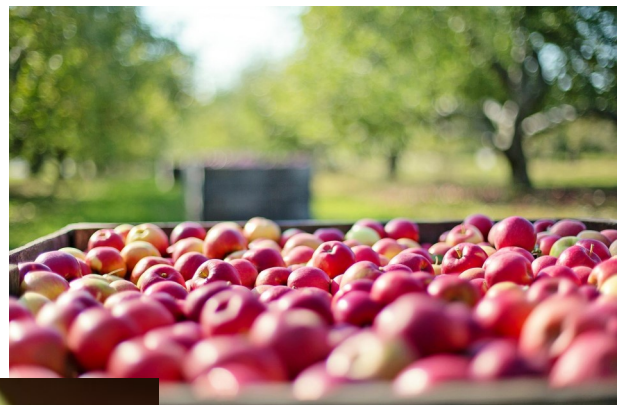
- o Apply the first application for either Option A (insecticide) or Option B (oil).
- o For Option A, repeat twice, spaced 7-10 apart, for a total of 3 applications in the first generation.
- o For Option B, apply insecticide at the listed date and re-apply 7-10 days later.
- o When the “start date” for the 2nd generation is provided, spray every 7-10 days until Sept. 15.
- o Pick a different product to use for each generation.

Low fruit damage in past years:

- o Apply the first application for either Option A (insecticide) or Option B (oil).
- o When the “start date” for the 2nd generation is provided, spray every 10-14 days until Sept. 15.
- o Pick a different product to use for each generation.



Second Generation				
Location	Start of 2 nd Generation hatch	Start of Peak Egg Hatch 2 nd Generation	End of Peak Hatch 2 nd Generation	End of 2 nd Generation
Burley	July 28	August 8	August 25	unknown
Pocatello Airport	July 28	August 8	August 27	unknown
Pocatello East Side	--	July 29	August 12	August 31
Fort Hall	July 29	August 11	August 31	unknown
Blackfoot	August 7	August 21	unknown	unknown
South/East Idaho Falls	August 2	August 16	unknown	unknown
Idaho Falls Airport	August 1	August 15	unknown	unknown
Ucon	August 9	August 23	unknown	unknown
Rigby	August 16	unknown	unknown	unknown
Ririe	August 17	unknown	unknown	unknown
Rexburg	July 31	August 14	unknown	unknown
Sugar City	August 11	August 27	unknown	unknown
St Anthony	August 14	unknown	unknown	unknown
Driggs	unknown	unknown	unknown	unknown



Whitney Cranshaw, Colorado State University,
Bugwood.org

UGA5302068

Ingredient	Efficacy	Residual length (days)	Comments
Conventional			
Carbaryl (old Sevin prod-	Good	14	
Gamma-cyhalothrin (Spectracide Triazicide)	Good to Excellent	14 – 17	Last application at least 21 days prior to harvest
Malathion (Bonide Malathion, Hi Yield Malathion)	Good	5 – 7	Max 2 applications; some products are pears only
Zeta cypermethrin (Garden Tech Sevin)	Good to Excellent	14 – 17	Last application at least 14 days prior to harvest
Organic			
Azadirachtin (Safer BioNeem)	Fair to Good	7 – 10	
Codling moth virus (Cyd-X)	Good (if populations low)	7	Works best when used at beginning of generation
Kaolin clay (Surround)	Fair	7	Produces protective barrier
Oil (All Seasons Oil, EcoSmart, Neem)	Fair	3	Recommended for the first application of the generation only
Pyrethrin (Ortho Fruit Spray, Fertilome Fruit Tree Spray, Safer End All)	Good	3 – 5	
Spinosad Monterey/ Fertilome Spinosad	Good	7 – 10	Max 6 applications



Fire Blight

At this point, prune out any new fire blight strikes as they happen. Don't wait until the end of the season or winter/spring pruning. Remember to disinfect your tools between each cut.

EASTERN IDAHO

PEST ALERT

UPCOMING EVENTS

AUGUST 9 NO GARDEN TIPS CLASS!!

AUGUST 8-12 BONNEVILLE COUNTY FAIR

AUGUST 23 IDAHO HOME GARDEN TIPS

CONSERVING WATER IN THE LANDSCAPE

TOM JACOBSEN, EXTENSION EDUCATOR

7:30 PM PLANT TALK

SEPTEMBER 13 IDAHO HOME GARDEN TIPS

TENDER SUMMER BULBS

SEPTEMBER 27 IDAHO HOME GARDEN TIPS

FALL LAWN CARE

RON PATTERSON, EXTENSION EDUCATOR

7:30 PM PLANT TALK

OCTOBER 11 IDAHO HOME GARDEN TIPS

DIVIDING PERENNIALS

OCTOBER 25 IDAHO HOME GARDEN TIPS

WINTER PROTECTIONS OF ROSES,
GRAPES, CANE BERRIES ETC.

7:30 PM PLANT TALK

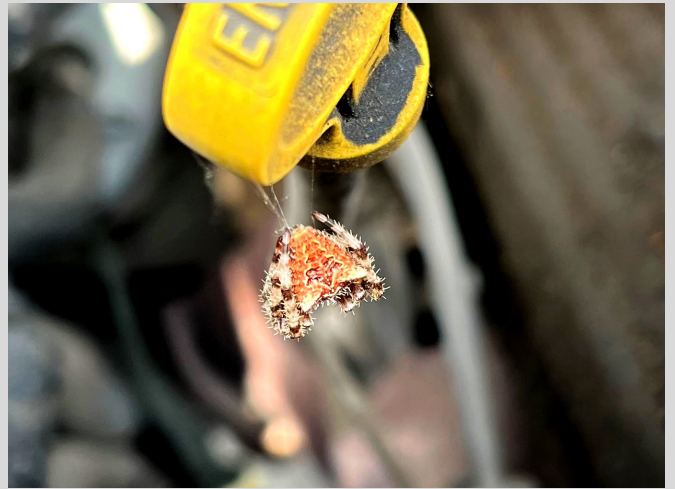


PHOTO OF THE WEEK: Photo credit: Lena Allen

PHOTO OF THE WEEK:

Imagine my surprise when I popped the hood this week to check my engine and found this little guy in there! This is a catface spider and one of your best friends in the garden. They are vicious killers of pest insects and don't harm humans. If you see one of these, relocate it to a safe spot where it can continue working hard for you and your garden!!

UNIVERSITY OF IDAHO
EXTENSION, BONNEVILLE COUNTY

1542 E 73rd S

Idaho Falls, ID 83402

Phone: (208)529-1390

Fax: 208-888-8888

Email: Bonneville@uidaho.edu

Web: uidaho.edu/extension/county/bonneville



Facebook.com/
UIExtensionBonneville



[https://www.instagram.com/
bonnevilleidaho/](https://www.instagram.com/bonnevilleidaho/)



@CountyExtension