



Washington County Forest Inventory Stocks



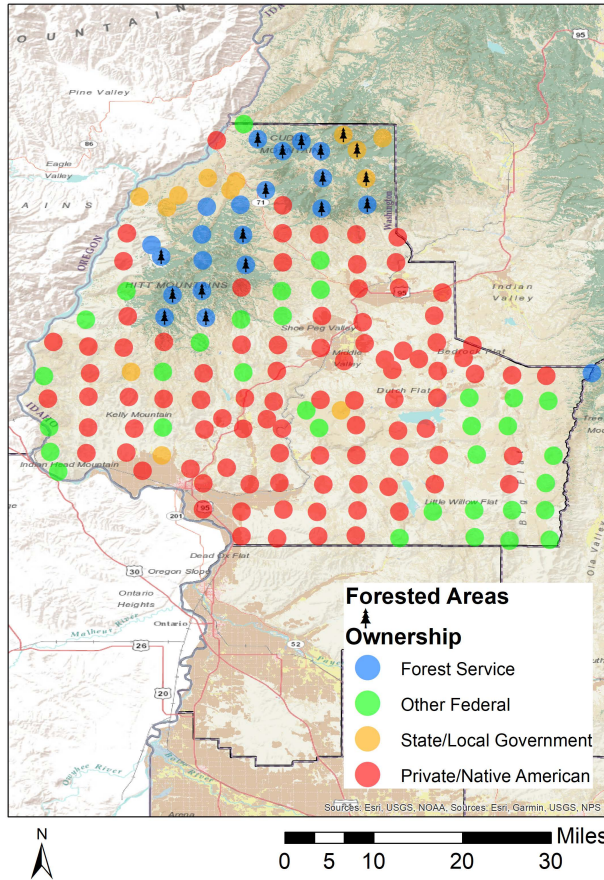
University of Idaho
Policy Analysis Group

Land Base Overview

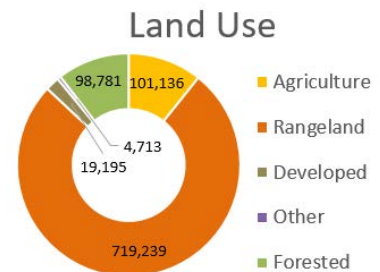
The Forest Inventory and Analysis (FIA) program administered by the USDA Forest Service serves as our national forest inventory. In Idaho, each plot represents roughly 6,000 acres and is revisited on a 10-year cycle beginning in 2004. The data collected provides valuable information on forest extent and stocks as well as how those stocks change over time. This fact sheet details the FIA data for Washington County, Idaho.

Area Sq Miles	Forested Acres	% Forested	Total Acres
1,474	98,781	10.5%	943,064

Washington County has just under 100,000 acres (10%) of its land base classified as forest. Forest Service and state forests are found in the northern parts of the county while the private and federal land dominate the southern part of the county.



Distribution of 160 Idaho USDA Forest Inventory and Analysis Plots by land ownership



Area and Volume by Forest Type and Owner

Equally important to the overall extent of the county's forests is its ownership and prevalent forest types. Forest extent by type and the volume on those acres provides insight into the economic and ecological opportunities given each owner's management focus. Washington County is dominated by Forest Service land in largely softwood forest types like True Fir and Douglas-fir.

	-millions of cubic feet-					-thousand acres-				
	Forest Service	Other Federal	State/Local	Private/Native American	Total	Forest Service	Other Federal	State/Local	Private/Native American	Total
Softwood										
Douglas-fir	112	0	8	0	120	46	0	6	0	52
Lodgepole Pine	0	0	2	0	2	0	0	1	0	1
Ponderosa Pine	40	0	0	0	40	16	0	0	0	16
True Fir	57	0	6	0	63	17	0	6	0	24
Total	209	0	16	0	225	79	0	14	0	93



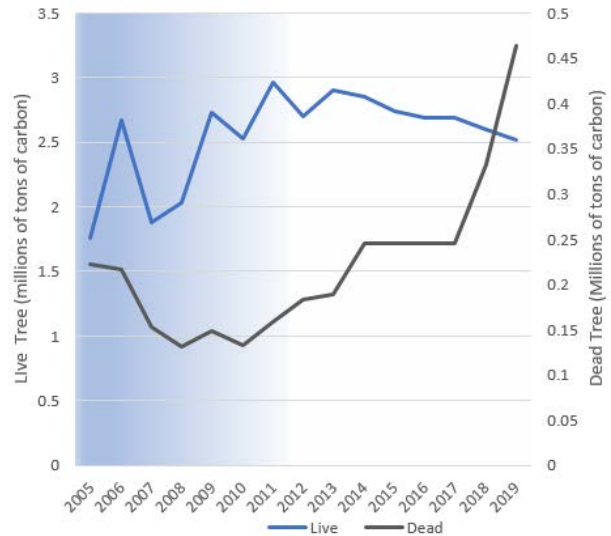
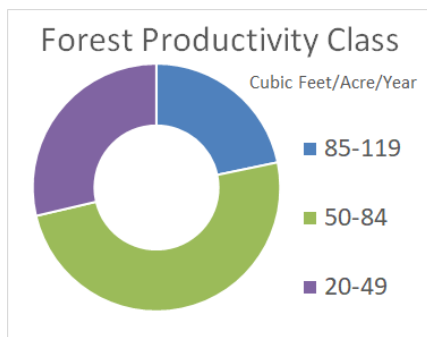
Washington County Forest Inventory Change



University of Idaho
Policy Analysis Group

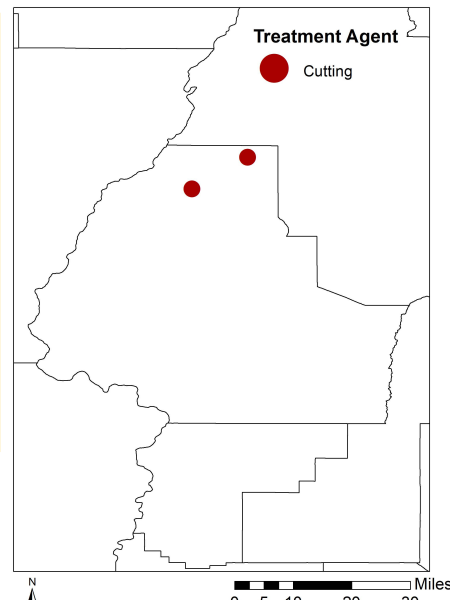
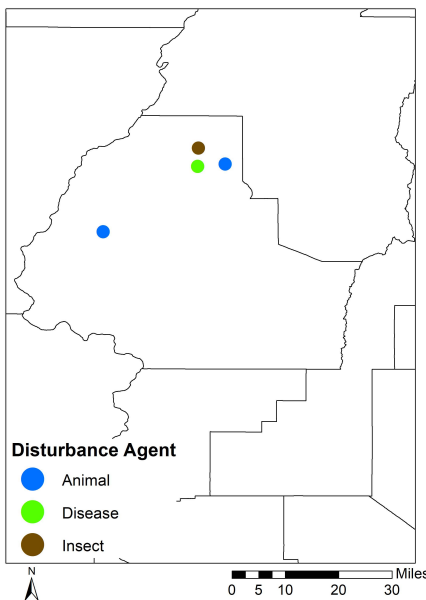
Forest Carbon

Forests are a significant part of the global carbon cycle. The productivity class indicates potential annual forest growth. This potential along with current forest size and stocking affect how much carbon a forest can intake, sequestering it from atmospheric accounts into woody biomass. Washington County's forests have been emitting carbon at a rate of 0.06 MT C per year since 2013. Dead tree carbon pools have fluctuated over that time period ranging between less than 0.1 and 0.5 MT C in stocks.



Each year since 2004, the FIA has measured 1/10th of the plots in Washington County. This means that a full sample was not collected until 2013. This is indicated by the blue coloring on the graph, which becomes lighter as more plots are measured. The early measurements are less precise than the ones after 2013, when all plots were measured, and the remeasuring process began.

Disturbance



Disturbances, either natural or management-related, are another factor of change affecting Idaho's forests. Insects are the largest factor of disturbance observed in the FIA data for Washington County, and becoming a bigger problem as they infect more trees. Forest management related disturbance is much smaller.

	Forest Service	Other Federal	State/Local	Private/Native American	Total
----- acres -----					
Disturbance					
Disease	2,514	0	0	0	2,514
Fire	0	0	0	0	0
Insect	3,771	0	0	0	3,771
Other Disturbance	5,499	0	0	0	5,499
Total	6,284	0	0	0	6,284
Management					
Planting	0	0	0	0	0
Cutting	628	0	1,786	0	2,414
Other Treatment	0	0	0	0	0
Preparation	0	0	0	0	0
Total	628	0	1,786	0	2,414
Grand Total	6,913	0	1,786	0	8,698