



# Payette County Forest Inventory Stocks



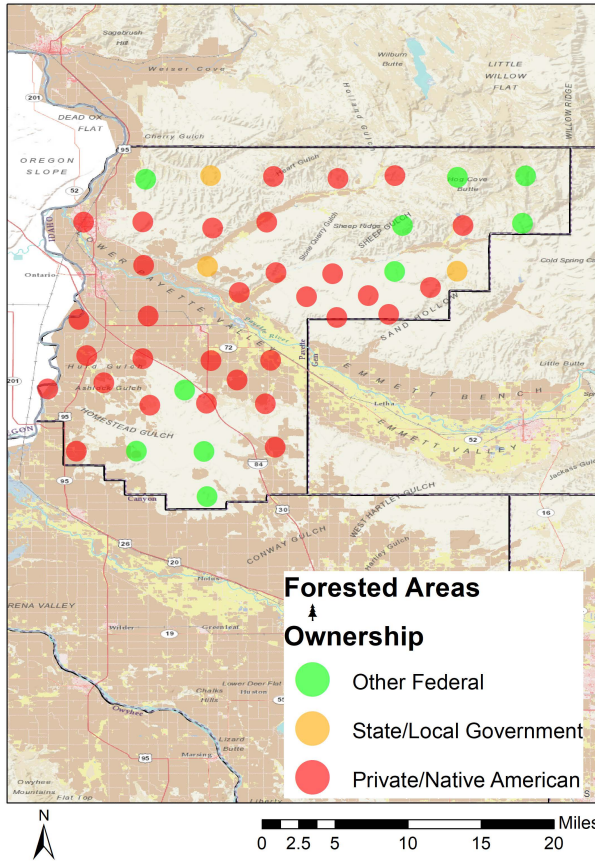
University of Idaho  
Policy Analysis Group

## Land Base Overview

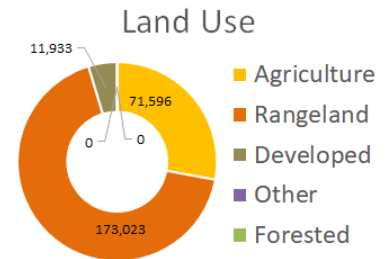
The Forest Inventory and Analysis (FIA) program administered by the USDA Forest Service serves as our national forest inventory. In Idaho, each plot represents roughly 6,000 acres and is revisited on a 10-year cycle beginning in 2004. The data collected provides valuable information on forest extent and stocks as well as how those stocks change over time. This fact sheet details the FIA data for Payette County, Idaho.

Area Sq Miles	Forested Acres	% Forested	Total Acres
401	0	0.0%	256,552

Payette County does not have any of its land base classified as forest. Private land dominates most of Payette County, while federal land is located around the edges of the county.



Distribution of 44 Idaho USDA Forest Inventory and Analysis Plots by land ownership



## Area and Volume by Forest Type and Owner

No inventory plots exist on forest land in Payette County.