



Nez Perce County Forest Inventory Stocks



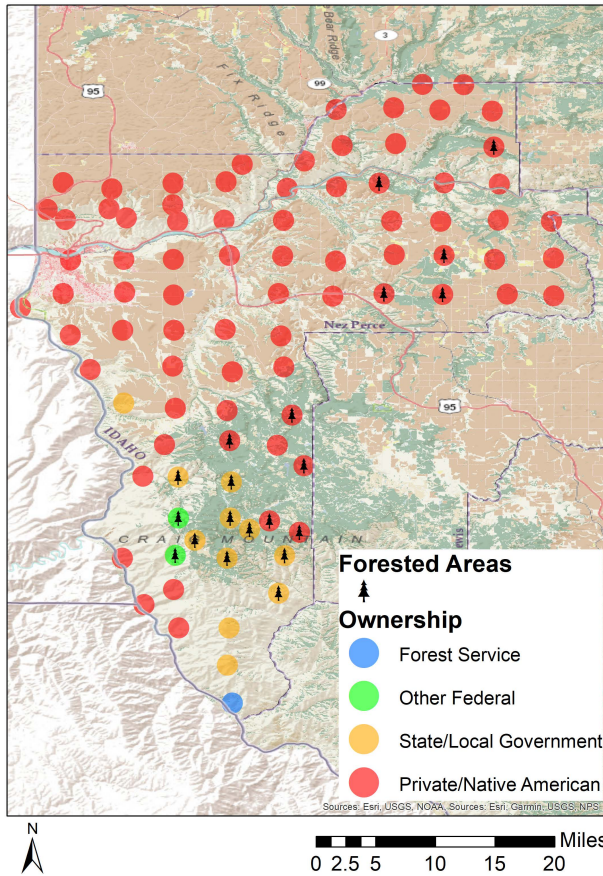
University of Idaho
Policy Analysis Group

Land Base Overview

The Forest Inventory and Analysis (FIA) program administered by the USDA Forest Service serves as our national forest inventory. In Idaho, each plot represents roughly 6,000 acres and is revisited on a 10-year cycle beginning in 2004. The data collected provides valuable information on forest extent and stocks as well as how those stocks change over time. This fact sheet details the FIA data for Nez Perce County, Idaho.

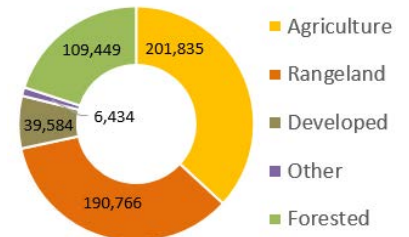
| Area Sq Miles | Forested Acres | % Forested | Total Acres |
|---------------|----------------|------------|-------------|
| 856 | 109,449 | 20.0% | 548,067 |

Nez Perce County has just under 110,000 acres (20%) of its land base classified as forest. Private land dominates the northern parts of the county while the state forest land is concentrated mostly in the south.



Distribution of 89 Idaho USDA Forest Inventory and Analysis Plots by land ownership

Land Use



Area and Volume by Forest Type and Owner

Equally important to the overall extent of the county's forests is its ownership and prevalent forest types. Forest extent by type and the volume on those acres provides insight into the economic and ecological opportunities given each owner's management focus. Nez Perce County is largely private land and softwood forest types like True Fir and Douglas-fir.

| | ---millions of cubic feet--- | | | | | ---thousand acres--- | | | | |
|-----------------|------------------------------|---------------|-------------|-------------------------|-------|----------------------|---------------|-------------|-------------------------|-------|
| | Forest Service | Other Federal | State/Local | Private/Native American | Total | Forest Service | Other Federal | State/Local | Private/Native American | Total |
| Softwood | | | | | | | | | | |
| Douglas-fir | 0 | 16 | 18 | 31 | 65 | 0 | 7 | 18 | 15 | 41 |
| Lodgepole Pine | 0 | 0 | 0 | 11 | 11 | 0 | 0 | 0 | 4 | 4 |
| Ponderosa Pine | 0 | 0 | 5 | 28 | 33 | 0 | 0 | 6 | 26 | 32 |
| True Fir | 0 | 0 | 34 | 1 | 36 | 0 | 0 | 24 | 2 | 26 |
| Hardwood | | | | | | | | | | |
| Hardwood | 0 | 0 | 0 | 3 | 3 | 0 | 0 | 0 | 6 | 6 |
| Total | 0 | 16 | 58 | 75 | 148 | 0 | 7 | 48 | 54 | 109 |



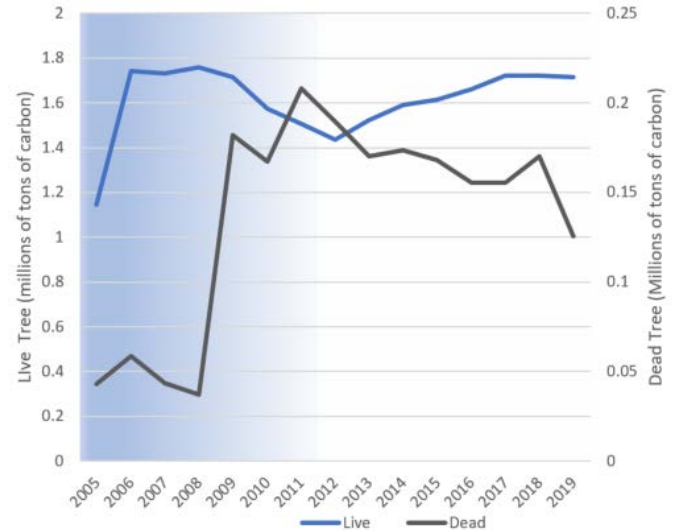
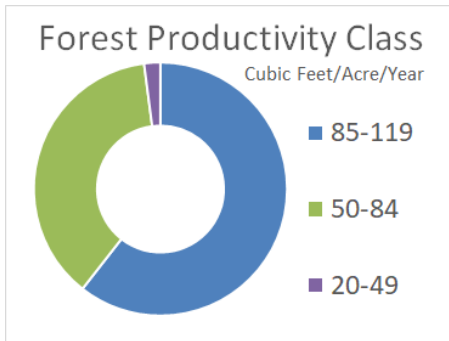
Nez Perce County Forest Inventory Change



University of Idaho
Policy Analysis Group

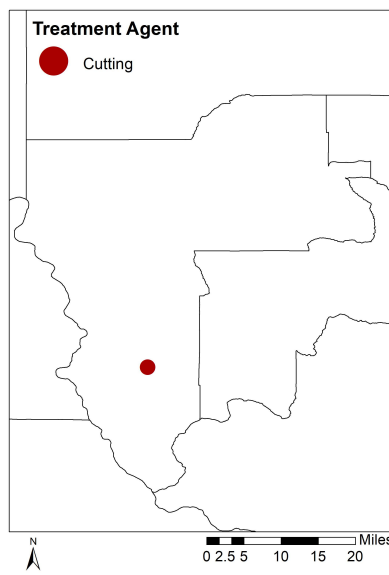
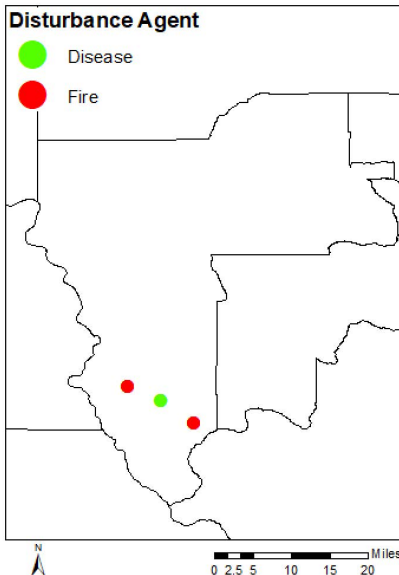
Forest Carbon

Forests are a significant part of the global carbon cycle. The productivity class indicates potential annual forest growth. This potential along with current forest size and stocking affect how much carbon a forest can intake, sequestering it from atmospheric accounts into woody biomass. Nez Perce County's forests have been removing carbon from the atmosphere at a rate of 0.03 MT C per year since 2013. Dead tree carbon pools have fluctuated over that time period ranging between less than 0.05 and .25 MT C in stocks.



Each year since 2004, the FIA has measured 1/10th of the plots in Nez Perce County. This means that a full sample was not collected until 2013. This is indicated by the blue coloring on the graph, which becomes lighter as more plots are measured. The early measurements are less precise than the ones after 2013, when all plots were measured, and the remeasuring process began.

Disturbance



Disturbances, either natural or management-related, are another factor of change affecting Idaho's forests. Fire is the largest factor of disturbance observed in the FIA data for Nez Perce County. Forest management related disturbance is much smaller and concentrated on state forest land.

| | Forest Service | Other Federal | State/ Local | Private/ Native American | Total |
|--------------------|----------------|---------------|--------------|--------------------------|-------|
| ----- acres ----- | | | | | |
| Disturbance | | | | | |
| Disease | 0 | 0 | 1,796 | 0 | 1,796 |
| Fire | 0 | 2,245 | 1,448 | 0 | 3,692 |
| Insect | 0 | 0 | 0 | 0 | 0 |
| Other Disturbance | 0 | 0 | 0 | 0 | 0 |
| Total | 0 | 2,245 | 3,243 | 0 | 5,488 |
| Management | | | | | |
| Planting | 0 | 0 | 0 | 0 | 0 |
| Cutting | 0 | 0 | 1,646 | 0 | 1,646 |
| Other Treatment | 0 | 0 | 0 | 0 | 0 |
| Preparation | 0 | 0 | 0 | 0 | 0 |
| Total | 0 | 0 | 1,646 | 0 | 1,646 |
| Grand Total | 0 | 2,245 | 4,889 | 0 | 7,134 |