



Minidoka County Forest Inventory Stocks



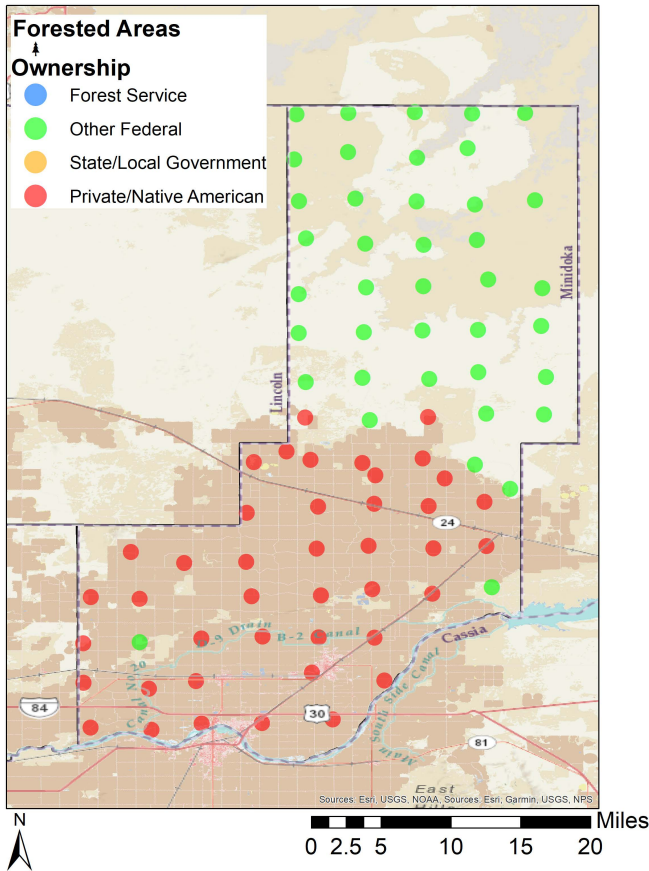
University of Idaho
Policy Analysis Group

Land Base Overview

The Forest Inventory and Analysis (FIA) program administered by the USDA Forest Service serves as our national forest inventory. In Idaho, each plot represents roughly 6,000 acres and is revisited on a 10-year cycle beginning in 2004. The data collected provides valuable information on forest extent and stocks as well as how those stocks change over time. This fact sheet details the FIA data for Minidoka County, Idaho.

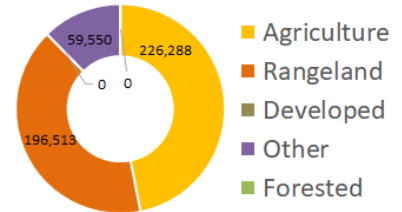
Area Sq Miles	Forested Acres	% Forested	Total Acres
754	0	0.0%	482,351

Minidoka County does not have any of its land base classified as forest. Federal lands dominate the northern half of the county while the private land is dominates the south.



Distribution of 82 Idaho USDA Forest Inventory and Analysis Plots by land ownership

Land Use



Area and Volume by Forest Type and Owner

No inventory plots exist on forest land in Minidoka County.