



Lemhi County Forest Inventory Stocks



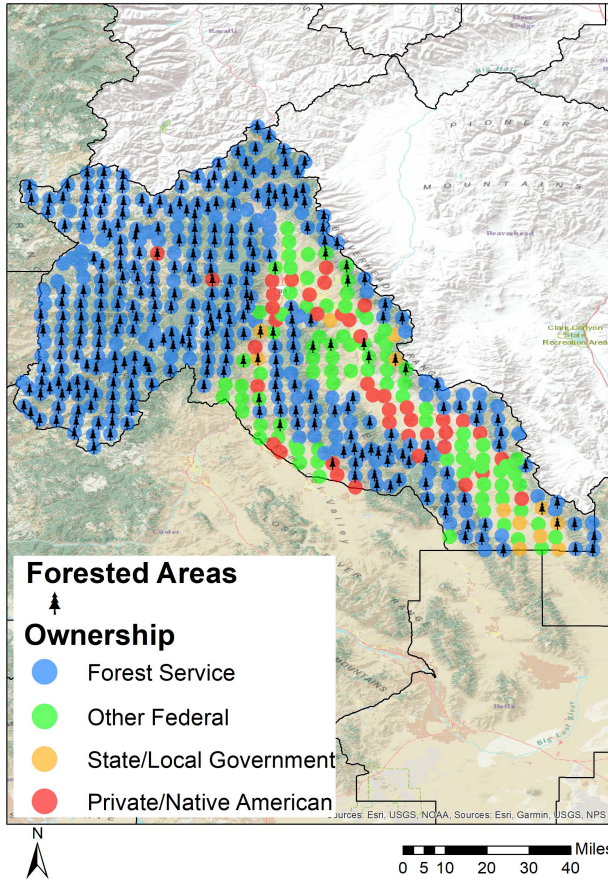
University of Idaho
Policy Analysis Group

Land Base Overview

The Forest Inventory and Analysis (FIA) program administered by the USDA Forest Service serves as our national forest inventory. In Idaho, each plot represents roughly 6,000 acres and is revisited on a 10-year cycle beginning in 2004. The data collected provides valuable information on forest extent and stocks as well as how those stocks change over time. This fact sheet details the FIA data Lemhi County, Idaho.

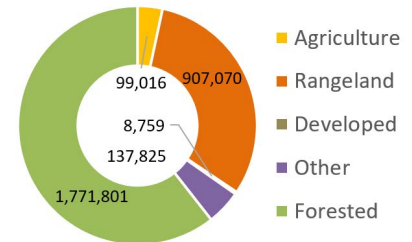
Area Sq Miles	Forested Acres	% Forested	Total Acres
4,569	1,771,801	60.6%	2,924,471

Lemhi County is highly forested with just over 1.7 million acres (60%) of its land base classified as forest. Forest Service forests dominate the western and southeastern parts of the county while the federal forest land is concentrated mostly in the central part of the county.



Distribution of 497 Idaho USDA Forest Inventory and Analysis Plots by land ownership

Land Use



Area and Volume by Forest Type and Owner

Equally important to the overall extent of the county's forests is its ownership and prevalent forest types. Forest extent by type and the volume on those acres provides insight into the economic and ecological opportunities given each owner's management focus. Lemhi County is dominated by Forest Service land in largely softwood forest types like True Fir and Douglas-fir.

	millions of cubic feet					thousand acres				
	Forest Service	Other Federal	State/Local	Private/Native American	Total	Forest Service	Other Federal	State/Local	Private/Native American	Total
Softwood										
Douglas-fir	1,047	70	16	2	1,135	735	48	8	6	797
Juniper	25	1	7	3	35	6	0	3	0	9
Lodgepole Pine	8	0	1	0	9	250	0	0	0	250
Other Softwood	314	0	0	0	314	69	9	6	0	84
Ponderosa Pine	86	2	1	0	89	45	0	0	1	47
True Fir	62	0	0	2	64	236	0	0	5	240
Hardwood										
	397	0	0	2	399	301	6	5	6	318
Total	1,939	73	24	8	2,044	1,641	64	22	19	1,746



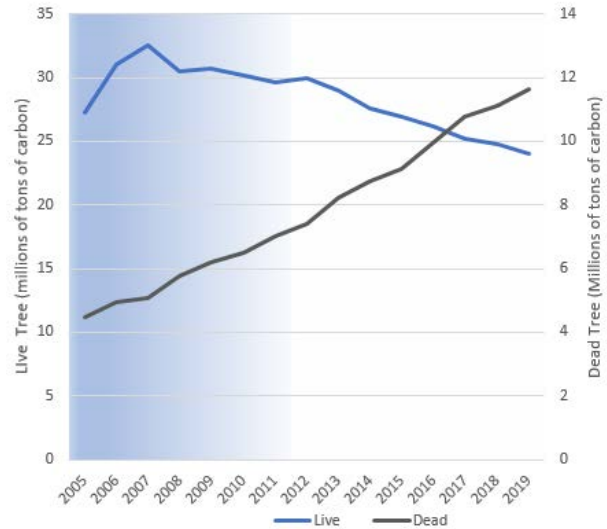
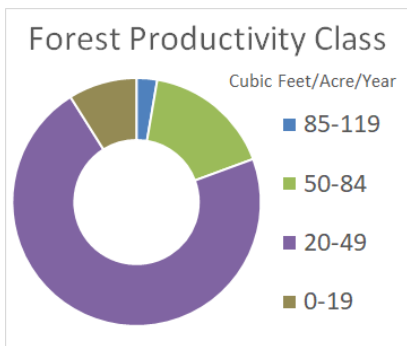
Lemhi County Forest Inventory Change



University of Idaho
Policy Analysis Group

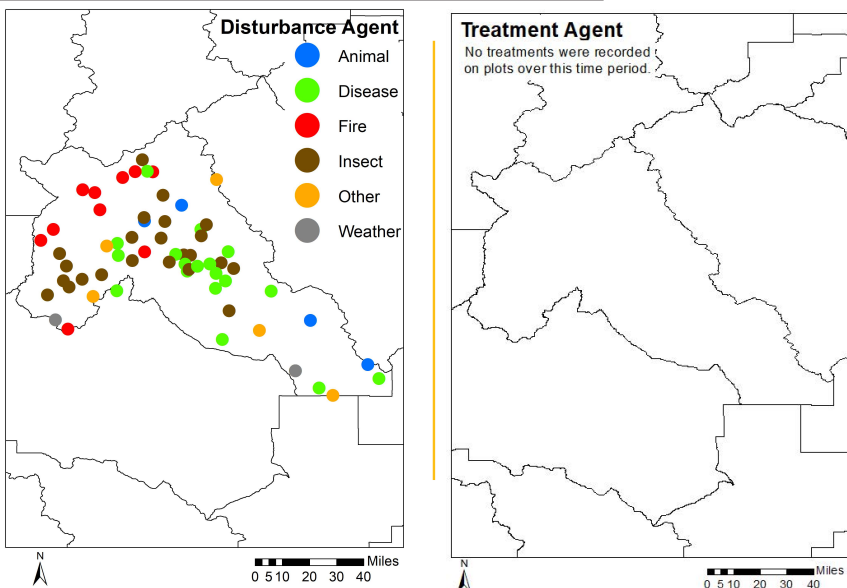
Forest Carbon

Forests are a significant part of the global carbon cycle. The productivity class indicates potential annual forest growth. This potential along with current forest size and stocking affect how much carbon a forest can intake, sequestering it from atmospheric accounts into woody biomass. Lemhi County's forests have been emitting carbon at a rate of 0.8 MT C per year since 2013. Dead tree carbon pools have fluctuated over that time period ranging between 4 and 12 MT C in stocks.



Each year since 2004, the FIA has measured 1/10th of the plots in Lemhi County. This means that a full sample was not collected until 2013. This is indicated by the blue coloring on the graph, which becomes lighter as more plots are measured. The early measurements are less precise than the ones after 2013, when all plots were measured, and the remeasuring process began.

Disturbance



Disturbances, either natural or management-related, are another factor of change affecting Idaho's forests. Insects are the largest factor of disturbance observed in the FIA data for Lemhi County, and becoming a bigger problem as they infect more trees. Forest management related disturbance did not occur during this time period.

	Forest Service	Other Federal	State/Local	Private/Native American	Total
----- acres -----					
Disturbance					
Disease	61,628	9,665	468	1,873	73,633
Fire	80,087	0	0	0	80,087
Insect	205,094	15,126	0	3,313	223,534
Other Disturbance	28,473	0	6,542	4,993	40,008
Total	375,282	24,791	7,010	10,179	417,263
Management					
Planting	0	0	0	0	0
Cutting	0	0	0	0	0
Other Treatment	0	0	0	0	0
Preparation	0	0	0	0	0
Total	0	0	0	0	0
Grand Total	375,282	24,791	7,010	10,179	417,263