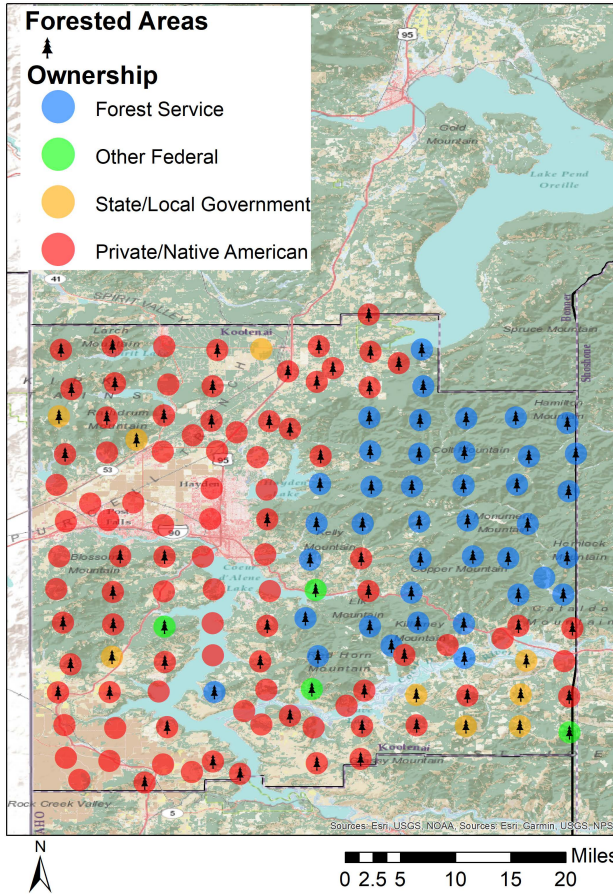




Kootenai County Forest Inventory Stocks



University of Idaho
Policy Analysis Group



Distribution of 145 Idaho USDA Forest Inventory and Analysis Plots by land ownership

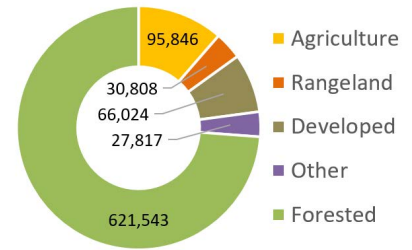
Land Base Overview

The Forest Inventory and Analysis (FIA) program administered by the USDA Forest Service serves as our national forest inventory. In Idaho, each plot represents roughly 6,000 acres and is revisited on a 10-year cycle beginning in 2004. The data collected provides valuable information on forest extent and stocks as well as how those stocks change over time. This fact sheet details the FIA data for Kootenai County, Idaho.

Area Sq Miles	Forested Acres	% Forested	Total Acres
1,316	621,543	73.8%	842,038

Kootenai County is highly forested with just over 620,000 acres (73%) of its land base classified as forest. Forest Service forests occur mostly in the northeastern parts of the county while the private forest land is concentrated mostly in the west.

Land Use



Area and Volume by Forest Type and Owner

Equally important to the overall extent of the county's forests is its ownership and prevalent forest types. Forest extent by type and the volume on those acres provides insight into the economic and ecological opportunities given each owner's management focus. Kootenai County is largely Forest Service or private land in softwood forest types like True Fir and Douglas-fir.

	millions of cubic feet					thousand acres				
	Forest Service	Other Federal	State/Local	Private/Native American	Total	Forest Service	Other Federal	State/Local	Private/Native American	Total
Softwood										
Douglas-fir	116	15	45	270	446	46	6	6	101	159
Lodgepole Pine	2	0	0	26	27	5	0	0	22	27
Other Softwood	258	27	33	47	365	66	12	9	26	113
Ponderosa Pine	0	21	29	88	138	0	3	6	62	71
True Fir	588	0	24	140	752	110	3	12	51	176
Hardwood										
	0	0	0	38	38	2	0	0	29	30
Total	964	62	131	608	1,765	228	25	34	290	577



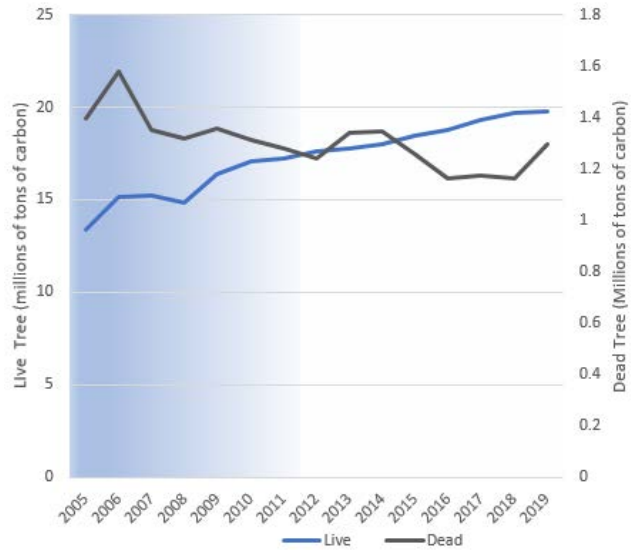
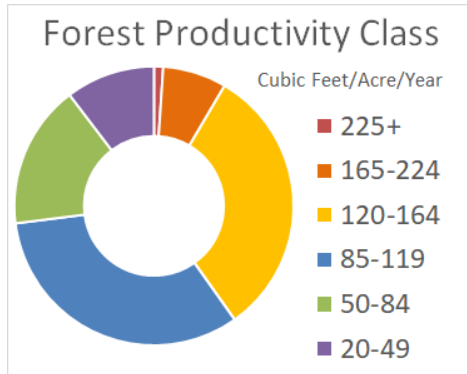
Kootenai County Forest Inventory Change



University of Idaho
Policy Analysis Group

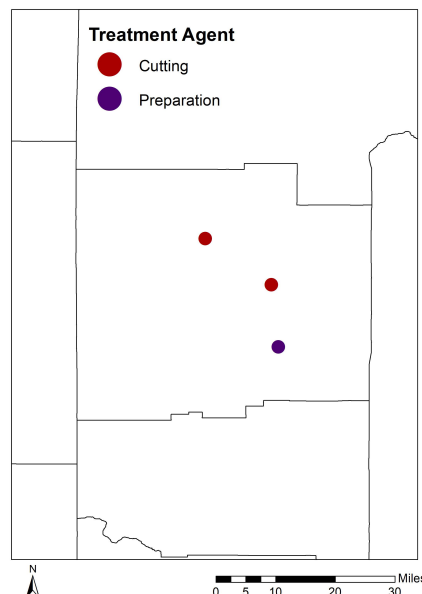
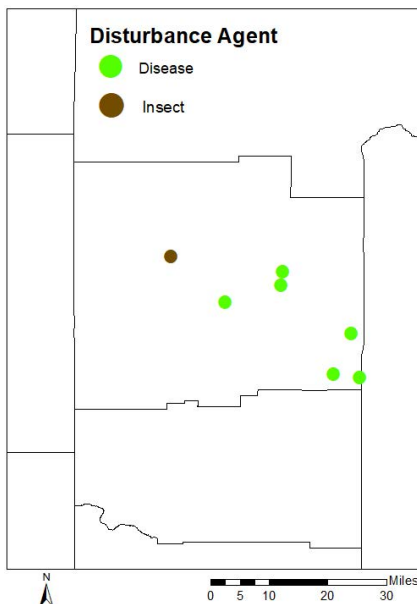
Forest Carbon

Forests are a significant part of the global carbon cycle. The productivity class indicates potential annual forest growth. This potential along with current forest size and stocking affect how much carbon a forest can intake, sequestering it from atmospheric accounts into woody biomass. Kootenai County's forests have been emitting carbon at a rate of 0.07 MT C per year since 2013. Dead tree carbon pools have been relatively stable over that time period ranging between 1 and 1.6 MT C in stocks.



Each year since 2004, the FIA has measured 1/10th of the plots in Kootenai County. This means that a full sample was not collected until 2013. This is indicated by the blue coloring on the graph, which becomes lighter as more plots are measured. The early measurements are less precise than the ones after 2013, when all plots were measured, and the remeasuring process began.

Disturbance



Disturbances, either natural or management-related, are another factor of change affecting Idaho's forests. Disease is the largest factor of disturbance observed in the FIA data for Kootenai County, and becoming a bigger problem as it infects more trees. Forest management related disturbance is much smaller.

	Forest Service	Other Federal	State/Local	Private/Native American	Total
----- acres -----					
Disturbance					
Disease	29,361	3,687	1,844	5,531	40,423
Fire	0	0	0	0	0
Insect	0	0	0	3,226	3,226
Other Disturbance	0	0	0	0	0
Total	29,361	3,687	1,844	8,757	43,649
Management					
Planting	0	0	0	0	0
Cutting	1,229	0	0	7,188	8,417
Other Treatment	0	0	0	0	0
Preparation	0	0	0	615	615
Total	1,229	0	0	7,802	9,031
Grand Total	30,590	3,687	1,844	16,559	52,681