

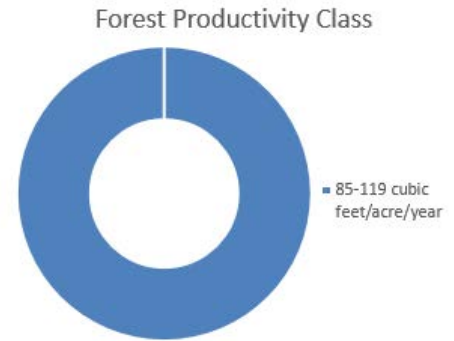
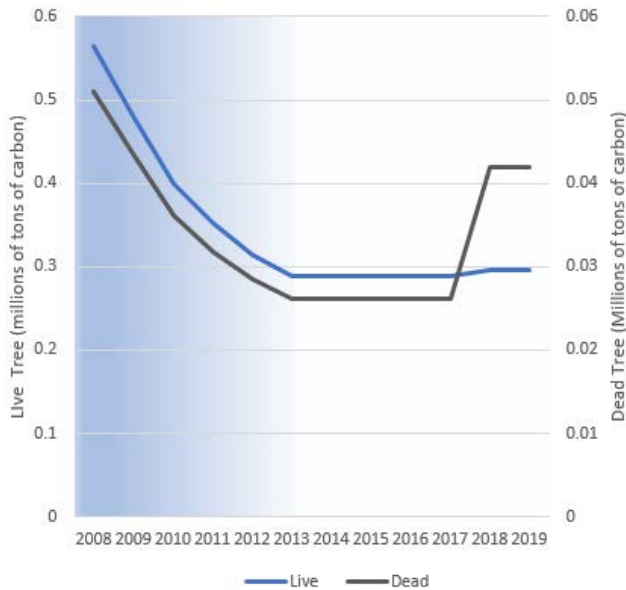


Idaho County Forest Inventory Change



University of Idaho
Policy Analysis Group

Forest Carbon



Forests are a significant part of the global carbon cycle. The productivity class classifies how much a forest grows every year. This affects how much carbon a forest can intake.

Disturbance

Disturbances affect the forest growth. There are many different types of disturbances and human management is a form of disturbance. Disease is very common in Northern Idaho and becoming a bigger problem as it infects more trees.