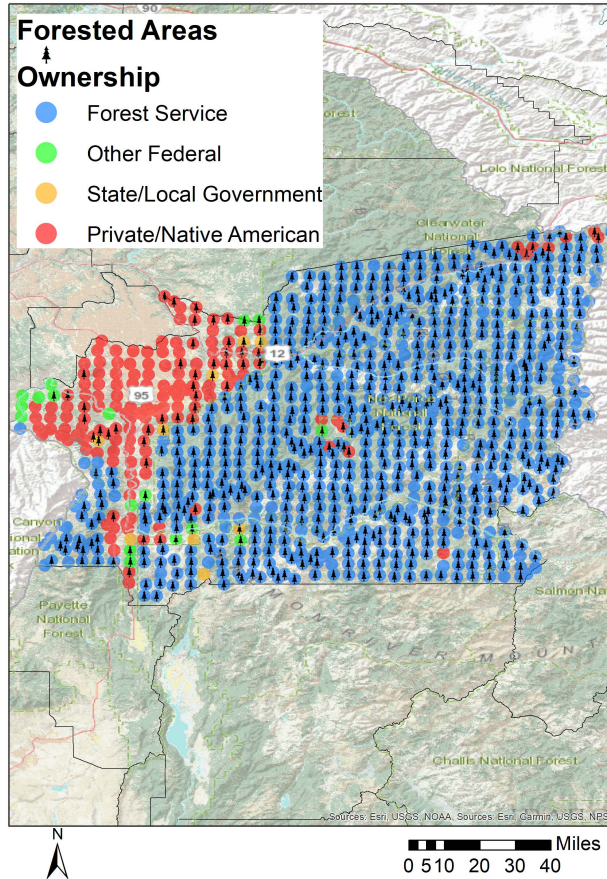




# Idaho County Forest Inventory Stocks



University of Idaho  
Policy Analysis Group



Distribution of 915 Idaho USDA Forest Inventory and Analysis Plots by land ownership

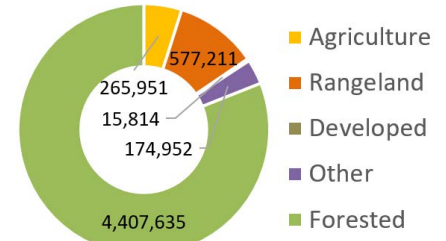
## Land Base Overview

The Forest Inventory and Analysis (FIA) program administered by the USDA Forest Service serves as our national forest inventory. In Idaho, each plot represents roughly 6,000 acres and is revisited on a 10-year cycle beginning in 2004. The data collected provides valuable information on forest extent and stocks as well as how those stocks change over time. This fact sheet details the FIA data for Idaho County, Idaho.

Area Sq Miles	Forested Acres	% Forested	Total Acres
8,502	4,407,635	81.0%	5,441,563

Idaho County is highly forested with just under 1.6 million acres (81%) of its land base classified as forest. Forest Service forests dominate the eastern, central, and southwestern parts of the county while the private forest land is concentrated mostly in the northwest.

## Land Use



## Area and Volume by Forest Type and Owner

Equally important to the overall extent of the county's forests is its ownership and prevalent forest types. Forest extent by type and the volume on those acres provides insight into the economic and ecological opportunities given each owner's management focus. Idaho County is dominated by Forest Service land in largely softwood forest types like True Fir and Douglas-fir.

	millions of cubic feet					thousand acres				
	Forest Service	Other Federal	State/Local	Private/Native American	Total	Forest Service	Other Federal	State/Local	Private/Native American	Total
<b>Softwood</b>										
Douglas-fir	2,516	37	16	149	2,718	881	15	6	52	954
Lodgepole Pine	769	0	0	25	794	630	0	0	19	648
Other Softwood	1,637	14	0	17	1,668	281	4	0	6	291
Ponderosa Pine	770	39	25	187	1,021	271	19	14	87	390
True Fir	5,571	32	1	89	5,693	1,542	19	6	85	1,652
<b>Hardwood</b>										
Hardwood	29	0	4	14	47	408	0	6	34	448
<b>Total</b>	11,292	122	45	482	11,941	4,012	56	33	283	4,383



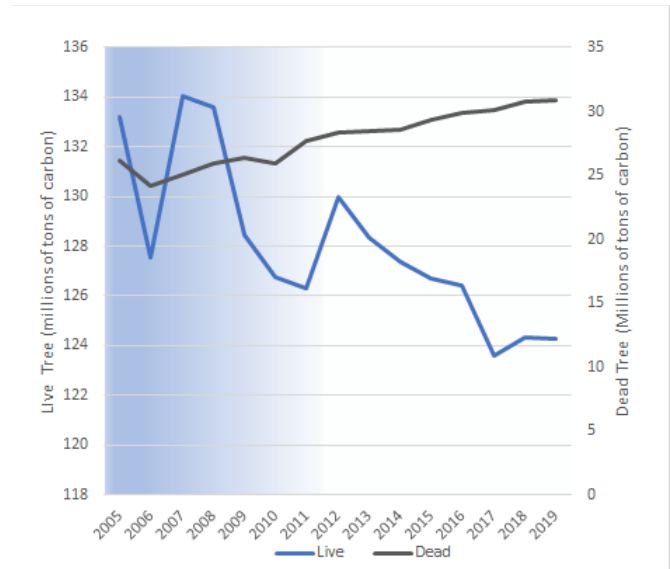
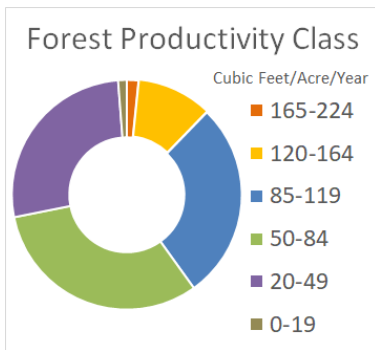
# Idaho County Forest Inventory Change



University of Idaho  
Policy Analysis Group

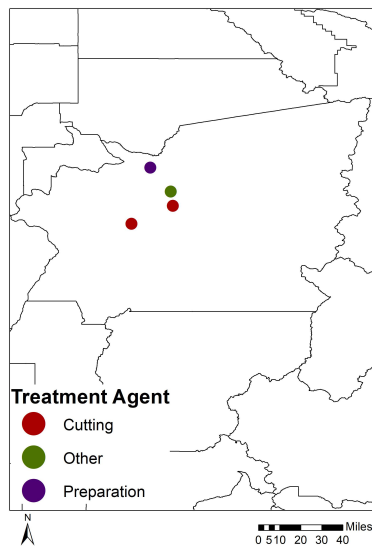
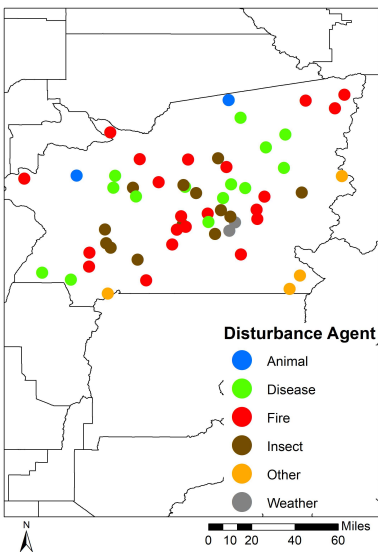
## Forest Carbon

Forests are a significant part of the global carbon cycle. The productivity class indicates potential annual forest growth. This potential along with current forest size and stocking affect how much carbon a forest can intake, sequestering it from atmospheric accounts into woody biomass. Idaho County's forests have been emitting carbon at a rate of 0.6 MT C per year since 2013. Dead tree carbon pools have been relatively stable over that time period ranging between 20 and 30 MT C in stocks.



Each year since 2004, the FIA has measured 1/10th of the plots in Idaho County. This means that a full sample was not collected until 2013. This is indicated by the blue coloring on the graph, which becomes lighter as more plots are measured. The early measurements are less precise than the ones after 2013, when all plots were measured, and the remeasuring process began.

## Disturbance



Disturbances, either natural or management-related, are another factor of change affecting Idaho's forests. Fire is the largest factor of disturbance observed in the FIA data for Idaho County. Forest management related disturbance is much smaller and concentrated on private forest land.

	Forest Service	Other Federal	State/Local	Private/Native American	Total
----- acres -----					
<b>Disturbance</b>					<i>Total</i>
Disease	79,306	1,223	0	6,197	86,726
Fire	213,555	5,112	0	4,803	223,470
Insect	84,742	0	1,859	1,859	88,460
Other Disturbance	32,379	0	0	5,335	37,714
<b>Total</b>	<b>409,982</b>	<b>6,335</b>	<b>1,859</b>	<b>18,193</b>	<b>436,369</b>
<b>Management</b>	0	0	0	0	0
Planting	0	0	620	0	620
Cutting	1,549	0	620	2,014	4,183
Other Treatment	0	0	620	0	620
Preparation	0	0	0	2,052	2,052
<b>Total</b>	<b>1,549</b>	<b>0</b>	<b>1,859</b>	<b>4,066</b>	<b>7,474</b>
<b>Grand Total</b>	<b>411,531</b>	<b>6,335</b>	<b>3,718</b>	<b>22,259</b>	<b>443,844</b>