



Fremont County Forest Inventory Stocks



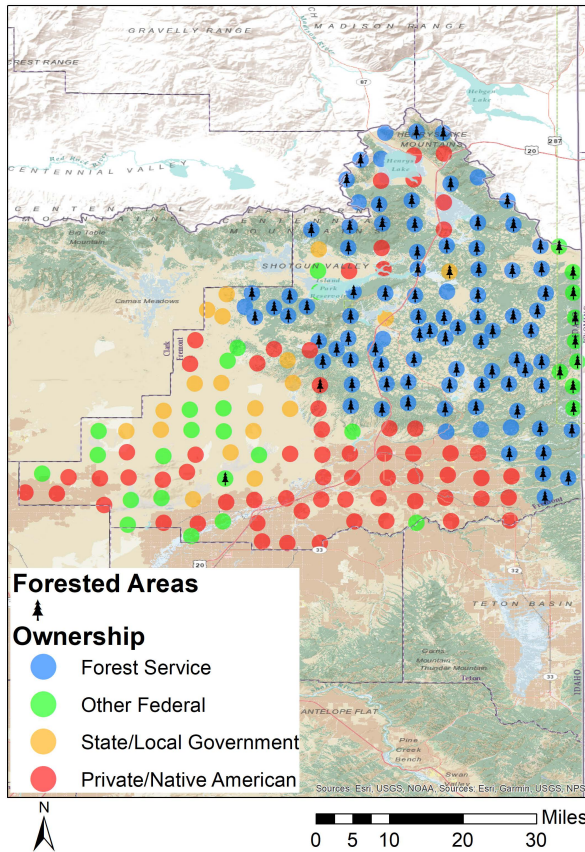
University of Idaho
Policy Analysis Group

Land Base Overview

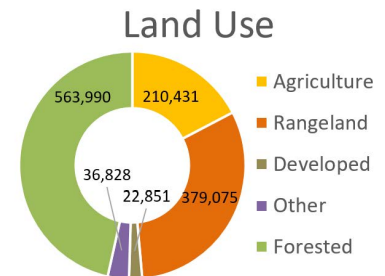
The Forest Inventory and Analysis (FIA) program administered by the USDA Forest Service serves as our national forest inventory. In Idaho, each plot represents roughly 6,000 acres and is revisited on a 10-year cycle beginning in 2004. The data collected provides valuable information on forest extent and stocks as well as how those stocks change over time. This fact sheet details the FIA data for Fremont County, Idaho.

Area Sq Miles	Forested Acres	% Forested	Total Acres
1,896	563,990	46.5%	1,213,175

Fremont County has just over 560,000 acres (46%) of its land base classified as forest. Forest Service forests dominate the eastern parts of the county while the private, state and federal land is concentrated mostly in the southwest.



Distribution of 203 Idaho USDA Forest Inventory and Analysis Plots by land ownership



Area and Volume by Forest Type and Owner

Equally important to the overall extent of the county's forests is its ownership and prevalent forest types. Forest extent by type and the volume on those acres provides insight into the economic and ecological opportunities given each owner's management focus. Fremont County is dominated by Forest Service land in largely softwood forest types like Douglas-fir and Lodgepole Pine.

	---millions of cubic feet---					---thousand acres---				
	Forest Service	Other Federal	State/Local	Private/Native American	Total	Forest Service	Other Federal	State/Local	Private/Native American	Total
Softwood										
Douglas-fir	226	0	0	15	241	99	0	0	7	106
Lodgepole Pine	321	51	10	0	383	279	47	6	0	332
True Fir	84	11	0	0	95	41	6	0	0	47
Hardwood										
Hardwood	36	0	0	0	36	43	2	0	0	44
Total	668	62	10	15	755	462	55	6	7	530



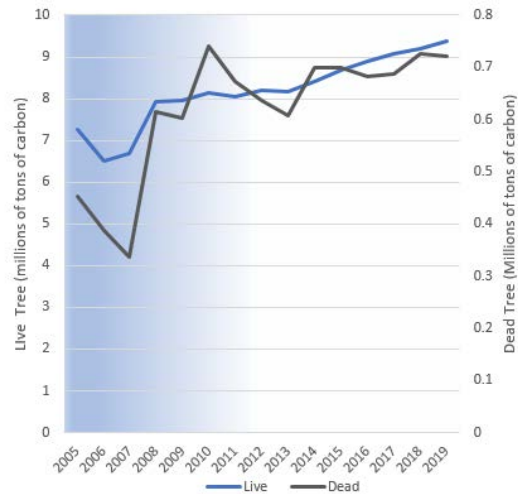
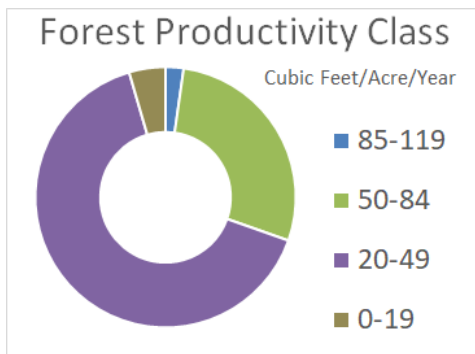
Fremont County Forest Inventory Change



University of Idaho
Policy Analysis Group

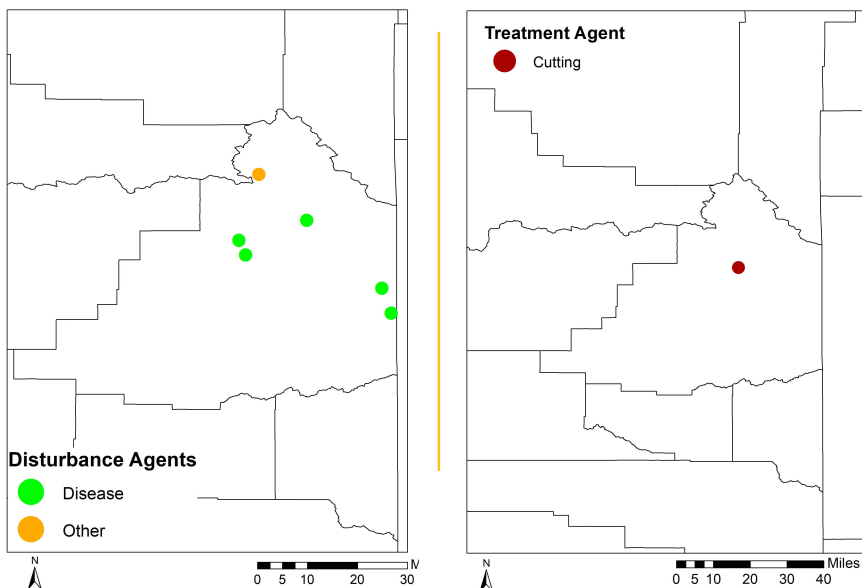
Forest Carbon

Forests are a significant part of the global carbon cycle. The productivity class indicates potential annual forest growth. This potential along with current forest size and stocking affect how much carbon a forest can intake, sequestering it from atmospheric accounts into woody biomass. Fremont County's forests have been removing carbon from the atmosphere at a rate of 0.2 MT C per year since 2013. Dead tree carbon pools have fluctuated over that time period ranging between 0.3 and 0.8 MT C in stocks.



Each year since 2004, the FIA has measured 1/10th of the plots in Fremont County. This means that a full sample was not collected until 2013. This is indicated by the blue coloring on the graph, which becomes lighter as more plots are measured. The early measurements are less precise than the ones after 2013, when all plots were measured, and the remeasuring process began.

Disturbance



Disturbances, either natural or management-related, are another factor of change affecting Idaho's forests. Disease is the largest factor of disturbance observed in the FIA data for Fremont County, and becoming a bigger problem as it infects more trees. Forest management related disturbance is much smaller.

	Forest Service	Other Federal	State/Local	Private/Native American	Total
----- acres -----					
Disturbance					
Disease	8,509	3,547	1,773	0	13,830
Fire	0	0	0	0	0
Insect	0	0	0	0	0
Other Disturbance	5,320	0	0	0	5,320
Total	13,830	3,547	1,773	0	19,150
Management					
Planting	0	0	0	0	0
Cutting	591	0	0	0	591
Other Treatment	0	0	0	0	0
Preparation	0	0	0	0	0
Total	591	0	0	0	591
Grand Total	14,421	3,547	1,773	0	19,741