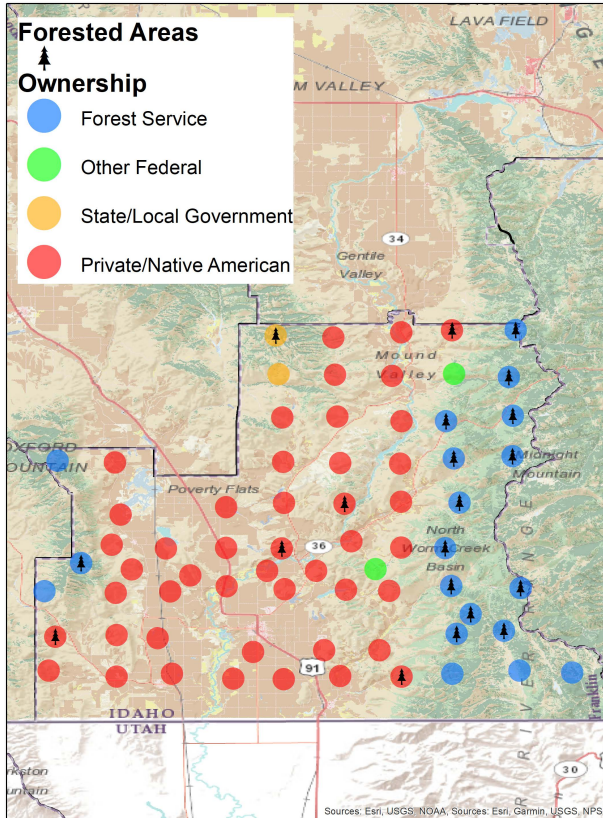




# Franklin County Forest Inventory Stocks



University of Idaho  
Policy Analysis Group



Distribution of 69 Idaho USDA Forest Inventory and Analysis Plots by land ownership

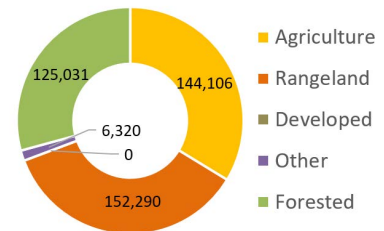
## Land Base Overview

The Forest Inventory and Analysis (FIA) program administered by the USDA Forest Service serves as our national forest inventory. In Idaho, each plot represents roughly 6,000 acres and is revisited on a 10-year cycle beginning in 2004. The data collected provides valuable information on forest extent and stocks as well as how those stocks change over time. This fact sheet details the FIA data for Franklin County, Idaho.

Area Sq Miles	Forested Acres	% Forested	Total Acres
668	125,031	29.2%	427,747

Franklin County is has just over 125,000 acres (29%) of its land base classified as forest. Forest Service forests dominate the eastern parts of the county while the private forest land is concentrated mostly in the western and central parts of the county.

## Land Use



## Area and Volume by Forest Type and Owner

Equally important to the overall extent of the county's forests is its ownership and prevalent forest types. Forest extent by type and the volume on those acres provides insight into the economic and ecological opportunities given each owner's management focus. Franklin County is largely Forest Service land with hardwood and softwood forest types like Douglas-fir.

	---millions of cubic feet---					-----thousand acres-----				
	Forest Service	Other Federal	State/Local	Private/Native American	Total	Forest Service	Other Federal	State/Local	Private/Native American	Total
<b>Softwood</b>										
Douglas-fir	36	0	0	0	36	24	0	2	0	26
Juniper	7	0	0	18	24	13	0	0	15	28
Lodgepole Pine	14	0	0	0	14	7	0	0	0	7
True Fir	7	0	0	0	7	7	0	0	0	7
<b>Hardwood</b>	48	0	0	3	51	39	0	0	11	50
<b>Total</b>	112	0	0	21	132	91	0	2	26	119

Fact Sheet #15 (April 28, 2022) – Fact Sheets are based on research reports relevant to current natural resource topics. Contributors: Kelsey Vershum Undergraduate Researcher and Greg Latta, Policy Analysis Group Director



# Franklin County Forest Inventory Change

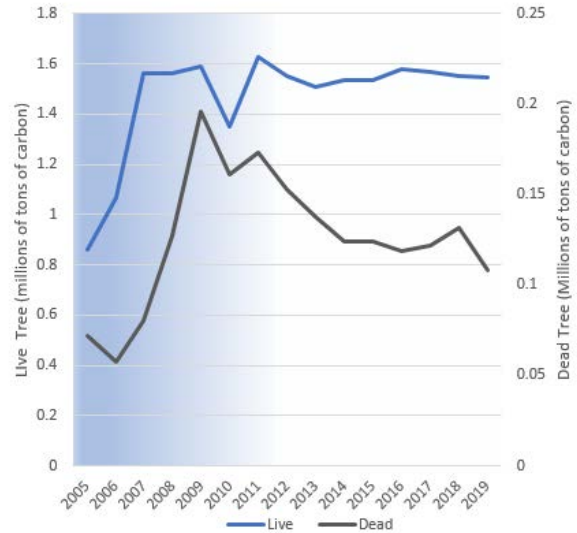
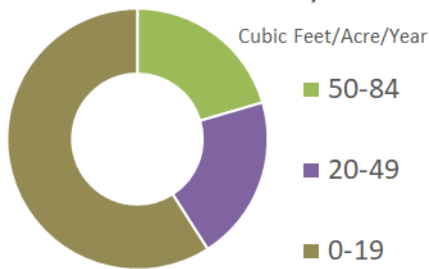


University of Idaho  
Policy Analysis Group

## Forest Carbon

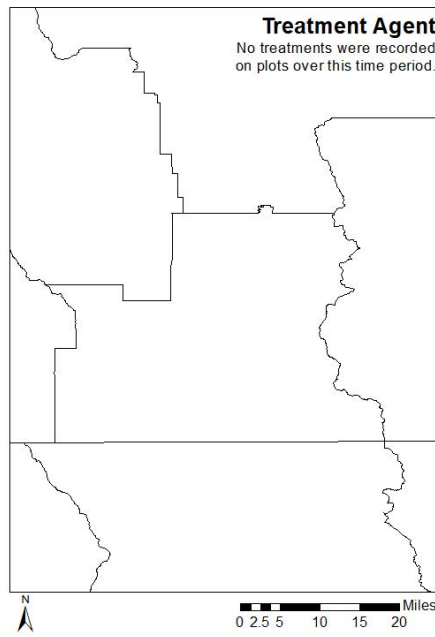
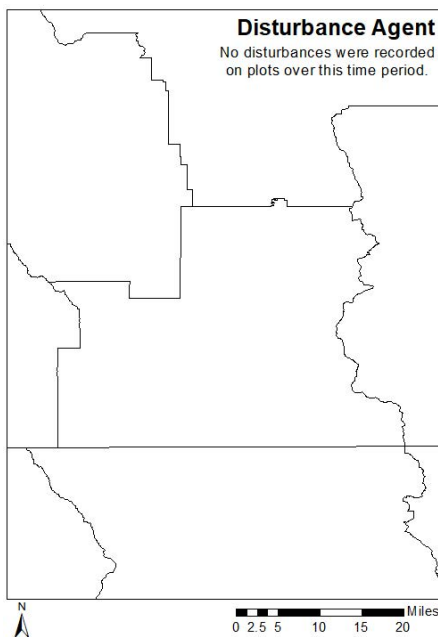
Forests are a significant part of the global carbon cycle. The productivity class indicates potential annual forest growth. This potential along with current forest size and stocking affect how much carbon a forest can intake, sequestering it from atmospheric accounts into woody biomass. Franklin County's forests have been removing carbon from the atmosphere at a rate of 0.006 MT C per year since 2013. Dead tree carbon pools have fluctuated over that time period ranging between 0.05 and 0.2 MT C in stocks.

### Forest Productivity Class



Each year since 2004, the FIA has measured 1/10th of the plots in Franklin County. This means that a full sample was not collected until 2013. This is indicated by the blue coloring on the graph, which becomes lighter as more plots are measured. The early measurements are less precise than the ones after 2013, when all plots were measured, and the remeasuring process began.

## Disturbance



Disturbances, either natural or management-related, are another factor of change affecting Idaho's forests. No disturbances or treatments were recorded during this time period for Franklin County.