



Elmore County Forest Inventory Stocks



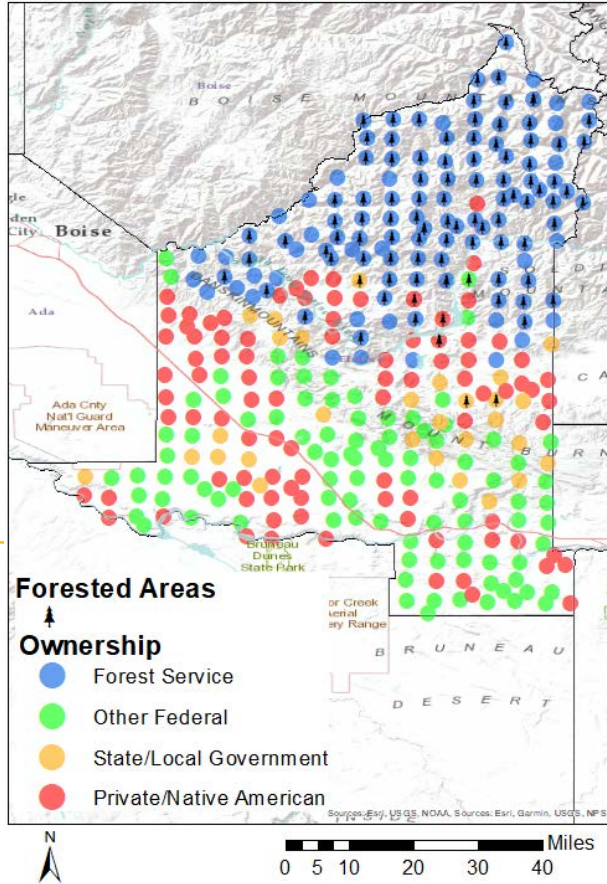
University of Idaho
Policy Analysis Group

Land Base Overview

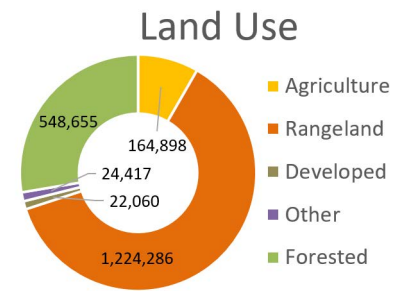
The Forest Inventory and Analysis (FIA) program administered by the USDA Forest Service serves as our national forest inventory. In Idaho, each plot represents roughly 6,000 acres and is revisited on a 10-year cycle beginning in 2004. The data collected provides valuable information on forest extent and stocks as well as how those stocks change over time. This fact sheet details the FIA data for Elmore County, Idaho.

Area Sq Miles	Forested Acres	% Forested	Total Acres
3,100	548,655	27.6%	1,984,316

Elmore County has just under 550,000 acres (27%) of its land base classified as forest. Forest Service forests dominate the northern parts of the county while the private and federal land is concentrated mostly in the south part of the county.



Distribution of 336 Idaho USDA Forest Inventory and Analysis Plots by land ownership



Area and Volume by Forest Type and Owner

Equally important to the overall extent of the county's forests is its ownership and prevalent forest types. Forest extent by type and the volume on those acres provides insight into the economic and ecological opportunities given each owner's management focus. Elmore County is dominated by Forest Service land in largely softwood forest types like True Fir and Douglas-fir.

	millions of cubic feet					thousand acres				
	Forest Service	Other Federal	State/Local	Private/Native American	Total	Forest Service	Other Federal	State/Local	Private/Native American	Total
Softwood										
Douglas-fir	265	0	0	17	282	139	0	0	11	150
Lodgepole Pine	0	0	0	0	0	6	0	0	0	6
Other Softwood	5	0	0	0	5	5	0	0	0	5
Ponderosa Pine	107	0	0	2	110	84	0	0	5	89
True Fir	101	0	0	0	101	72	0	0	0	72
Hardwood										
	30	2	4	0	36	198	6	14	0	218
Total	508	2	4	19	533	503	6	14	16	539



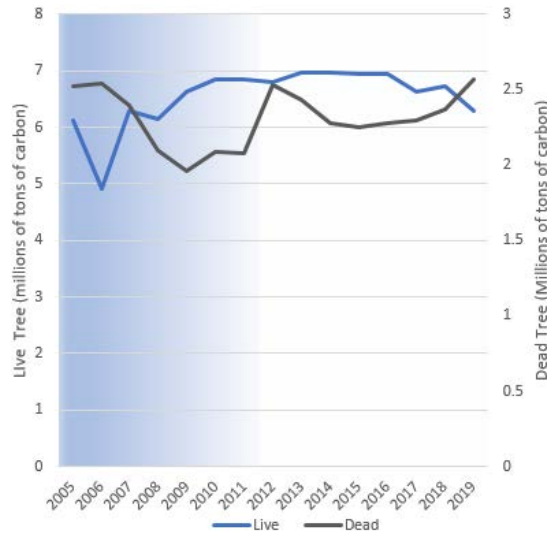
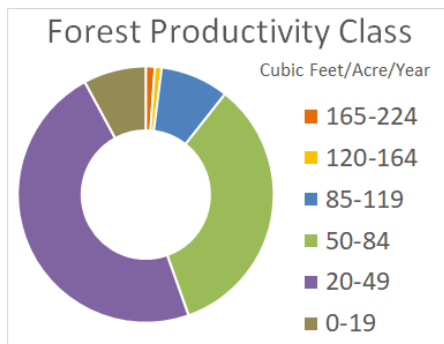
Elmore County Forest Inventory Change



University of Idaho
Policy Analysis Group

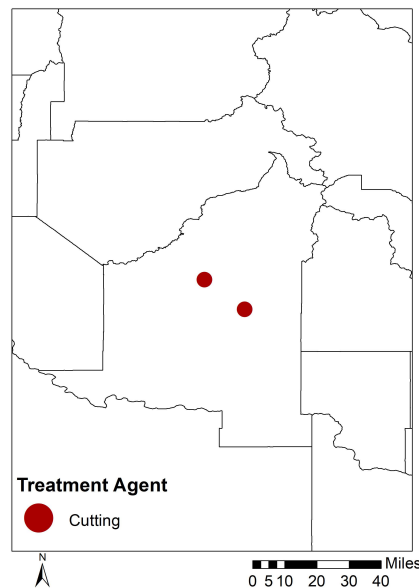
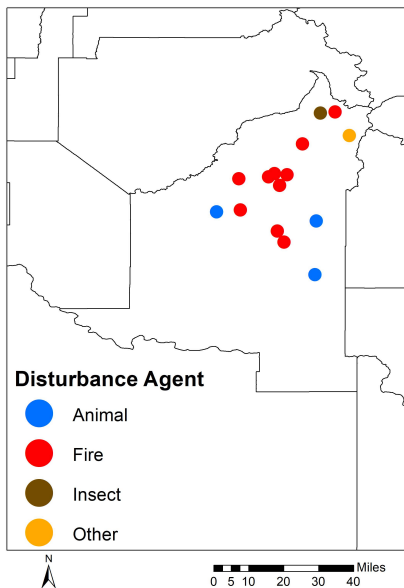
Forest Carbon

Forests are a significant part of the global carbon cycle. The productivity class indicates potential annual forest growth. This potential along with current forest size and stocking affect how much carbon a forest can intake, sequestering it from atmospheric accounts into woody biomass. Elmore County's forests have been emitting carbon at a rate of 0.1 MT C per year since 2013. Dead tree carbon pools have been relatively stable over that time period ranging between 2 and 2.5 MT C in stocks.



Each year since 2004, the FIA has measured 1/10th of the plots in Elmore County. This means that a full sample was not collected until 2013. This is indicated by the blue coloring on the graph, which becomes lighter as more plots are measured. The early measurements are less precise than the ones after 2013, when all plots were measured, and the remeasuring process began.

Disturbance



Disturbances, either natural or management-related, are another factor of change affecting Idaho's forests. Fire is the largest factor of disturbance observed in the FIA data for Elmore County. Forest management related disturbance is much smaller and concentrated on private or state forest land.

	Forest Service	Other Federal	State/Local	Private/ Native American	Total
----- acres -----					
Disturbance					
Disease	0	0	0	0	0
Fire	35,207	0	1,851	2,904	39,962
Insect	925	0	0	0	925
Other Disturbance	13,481	0	1,070	0	14,551
Total	49,614	0	2,921	2,904	55,439
Management					
Planting	0	0	0	463	463
Cutting	0	0	617	463	1,080
Other Treatment	0	0	0	0	0
Preparation	0	0	0	0	0
Total	0	0	617	925	1,542
Grand Total	49,614	0	3,538	3,829	56,981