



Cassia County Forest Inventory Stocks



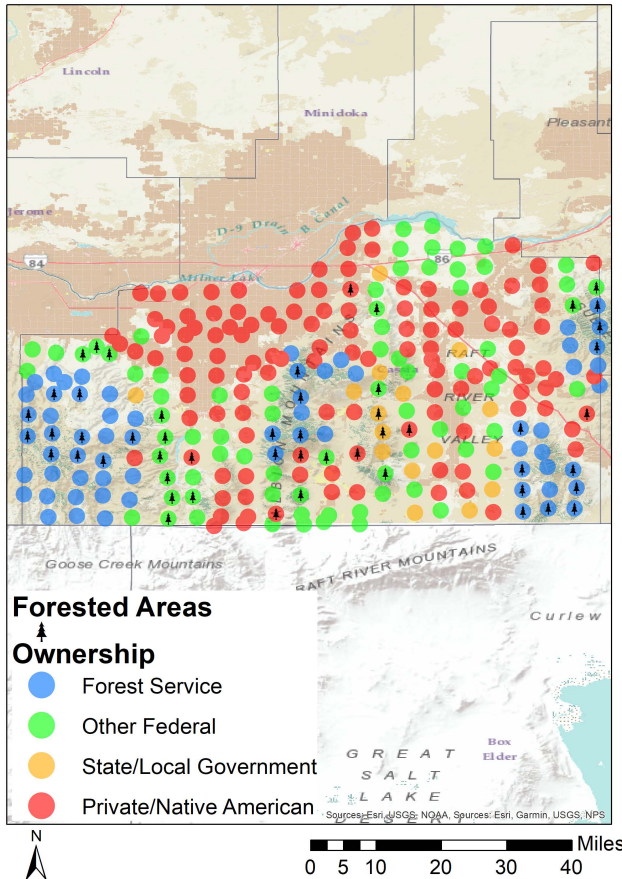
University of Idaho
Policy Analysis Group

Land Base Overview

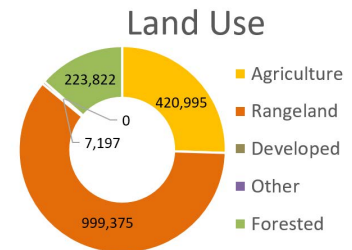
The Forest Inventory and Analysis (FIA) program administered by the USDA Forest Service serves as our national forest inventory. In Idaho, each plot represents roughly 6,000 acres and is revisited on a 10-year cycle beginning in 2004. The data collected provides valuable information on forest extent and stocks as well as how those stocks change over time. This fact sheet details the FIA data for Cassia County, Idaho.

Area Sq Miles	Forested Acres	% Forested	Total Acres
2,580	223,822	13.6%	1,651,389

Cassia County is not highly forested with just under 225,000 acres (13%) of its land base classified as forest. Forest Service forests occur on both the east and west parts of the county while the private forest land is concentrated mostly in the center of the county.



Distribution of 280 Idaho USDA Forest Inventory and Analysis Plots by land ownership



Area and Volume by Forest Type and Owner

Equally important to the overall extent of the county's forests is its ownership and prevalent forest types. Forest extent by type and the volume on those acres provides insight into the economic and ecological opportunities given each owner's management focus. Cassia County is largely Forest Service land in softwood forest types like True Fir and Douglas-fir.

	-millions of cubic feet-					-thousand acres-				
	Forest Service	Other Federal	State/Local	Private/Native American	Total	Forest Service	Other Federal	State/Local	Private/Native American	Total
Softwood										
Douglas-fir	18	0	0	0	18	11	0	0	0	11
Juniper	13	33	2	7	56	28	58	9	25	120
True Fir	74	0	0	0	74	31	0	0	0	31
Hardwood										
	22	0	0	0	22	37	16	2	6	61
Total	127	34	2	7	170	108	74	11	31	223



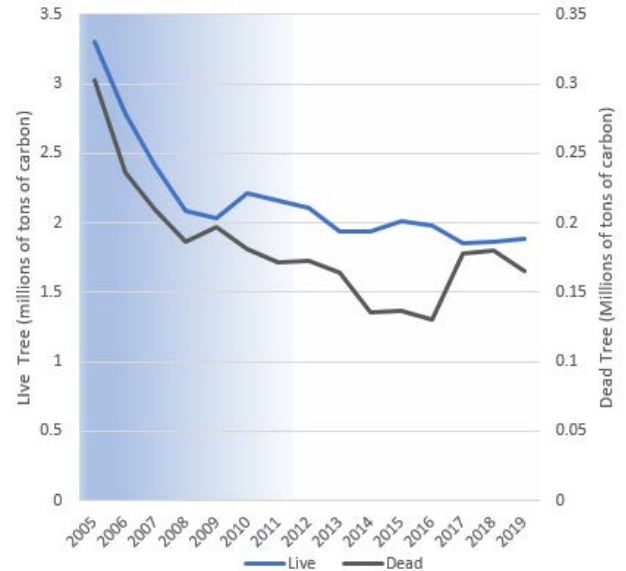
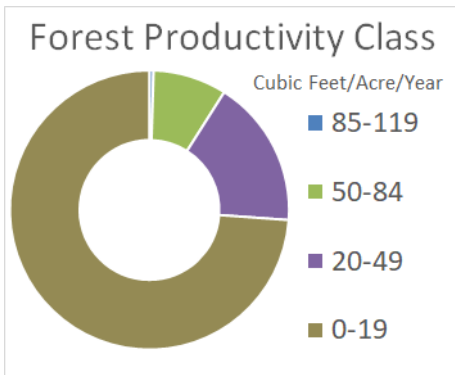
Cassia County Forest Inventory Change



University of Idaho
Policy Analysis Group

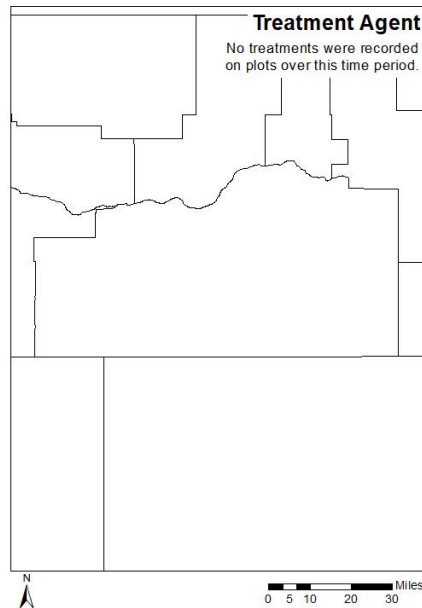
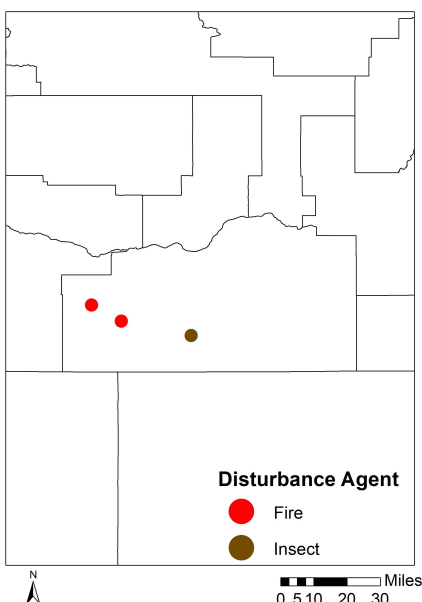
Forest Carbon

Forests are a significant part of the global carbon cycle. The productivity class indicates potential annual forest growth. This potential along with current forest size and stocking affect how much carbon a forest can intake, sequestering it from atmospheric accounts into woody biomass. Cassia County's forests have been emitting carbon at a rate of 0.008 MT C per year since 2013. Dead tree carbon pools have fluctuated over that time period ranging between 0.1 and 0.35 MT C in stocks.



Each year since 2004, the FIA has measured 1/10th of the plots in Cassia County. This means that a full sample was not collected until 2013. This is indicated by the blue coloring on the graph, which becomes lighter as more plots are measured. The early measurements are less precise than the ones after 2013, when all plots were measured, and the remeasuring process began.

Disturbance



Disturbances, either natural or management-related, are another factor of change affecting Idaho's forests. Fire and insects are the largest factor of disturbance observed in the FIA data for Cassia County. Forest management related disturbance was not recorded in Cassia County during this time period.

	Forest Service	Other Federal	State/Local	Private/Native American	Total
----- acres -----					
Disturbance					
Disease	0	0	0	0	0
Fire	1,831	3,662	0	0	5,493
Insect	1,271	0	0	0	1,271
Other Disturbance	0	0	0	0	0
Total	3,101	3,662	0	0	6,763
Management					
Planting	0	0	0	0	0
Cutting	0	0	0	0	0
Other Treatment	0	0	0	0	0
Preparation	0	0	0	0	0
Total	0	0	0	0	0
Grand Total	3,101	3,662	0	0	6,763