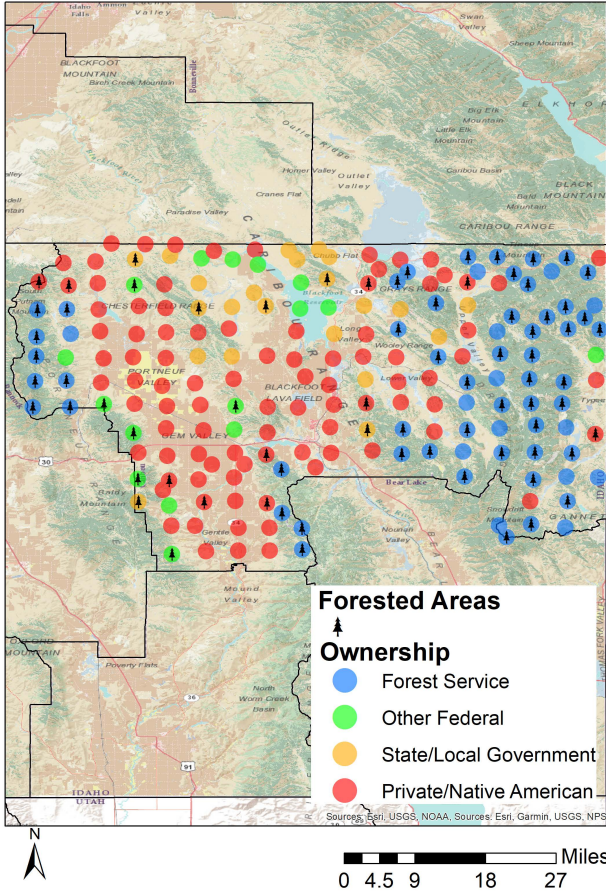




Caribou County Forest Inventory Stocks



University of Idaho
Policy Analysis Group



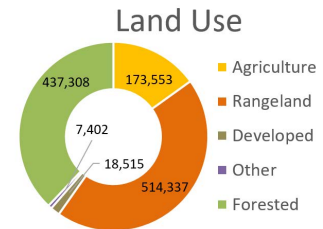
Distribution of 196 Idaho USDA Forest Inventory and Analysis Plots by land ownership

Land Base Overview

The Forest Inventory and Analysis (FIA) program administered by the USDA Forest Service serves as our national forest inventory. In Idaho, each plot represents roughly 6,000 acres and is revisited on a 10-year cycle beginning in 2004. The data collected provides valuable information on forest extent and stocks as well as how those stocks change over time. This fact sheet details the FIA data for Caribou County, Idaho.

Area Sq Miles	Forested Acres	% Forested	Total Acres
1,799	437,308	38.0%	1,151,115

Caribou County has just under 440,000 acres (38%) of its land base classified as forest. Forest Service forests dominate the eastern higher elevation parts of the county while the private forest land is concentrated mostly in the southwest.



Area and Volume by Forest Type and Owner

Equally important to the overall extent of the county's forests is its ownership and prevalent forest types. Forest extent by type and the volume on those acres provides insight into the economic and ecological opportunities given each owner's management focus. Caribou County is largely Forest Service land in softwood forest types like True Fir and Douglas-fir.

	millions of cubic feet					thousand acres				
	Forest Service	Other Federal	State/Local	Private/Native American	Total	Forest Service	Other Federal	State/Local	Private/Native American	Total
Softwood										
Douglas-fir	263	34	44	30	371	95	13	12	13	133
Juniper	2	0	0	15	17	7	0	0	12	19
Lodgepole Pine	55	0	0	0	55	34	0	0	0	34
True Fir	112	0	0	0	112	44	0	0	0	44
Hardwood										
	71	8	21	11	111	115	18	22	30	185
Total	504	42	65	56	666	294	31	35	54	414



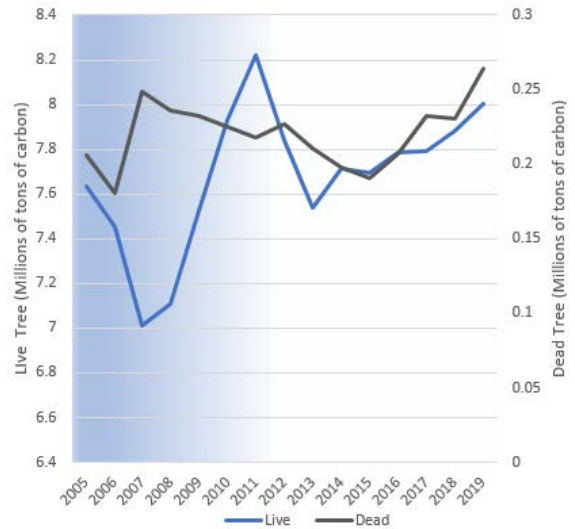
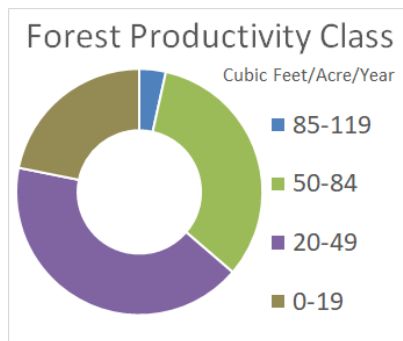
Caribou County Forest Inventory Change



University of Idaho
Policy Analysis Group

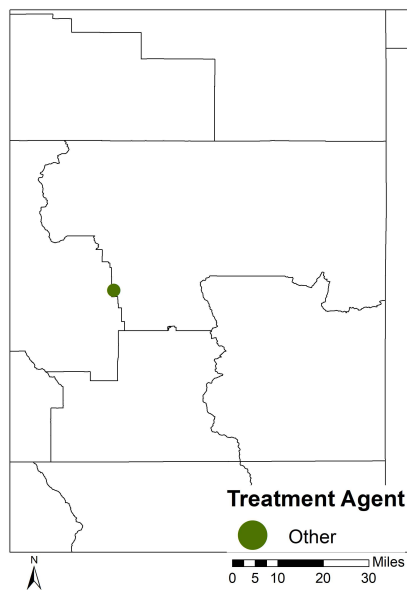
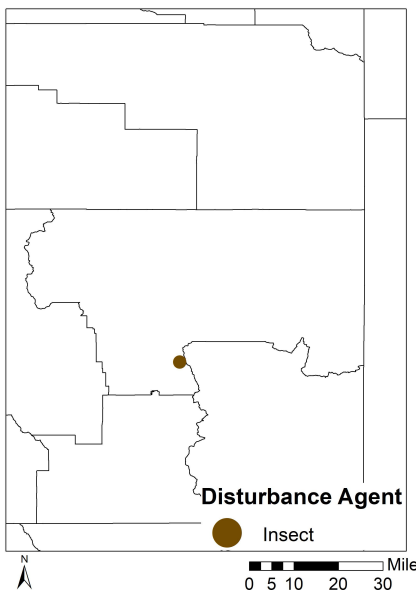
Forest Carbon

Forests are a significant part of the global carbon cycle. The productivity class indicates potential annual forest growth. This potential along with current forest size and stocking affect how much carbon a forest can intake, sequestering it from atmospheric accounts into woody biomass. Caribou County's forests have been removing carbon from the atmosphere at a rate of 0.07 MT C per year since 2013. Dead tree carbon pools have been relatively stable over that time period ranging between 0.15 and 0.25 MT C in stocks.



Each year since 2004, the FIA has measured 1/10th of the plots in Caribou County. This means that a full sample was not collected until 2013. This is indicated by the blue coloring on the graph, which becomes lighter as more plots are measured. The early measurements are less precise than the ones after 2013, when all plots were measured, and the remeasuring process began.

Disturbance



Disturbances, either natural or management-related, are another factor of change affecting Idaho's forests. Insects are the largest factor of disturbance observed in the FIA data for Caribou County, and becoming a bigger problem as they infect more trees. Forest management related disturbance is much smaller and concentrated on state forest land.

	Forest Service	Other Federal	State/Local	Private/Native American	Total
----- acres -----					
Disturbance					
Disease	0	0	0	0	0
Fire	0	0	0	0	0
Insect	1,941	0	0	0	1,941
Other Disturbance	0	0	0	0	0
Total	1,941	0	0	0	1,941
Management					
Planting	0	0	0	0	0
Cutting	0	0	0	0	0
Other Treatment	0	0	162	0	162
Preparation	0	0	0	0	0
Total	0	0	162	0	162
Grand Total	1,941	0	162	0	2,103