



Butte County Forest Inventory Stocks



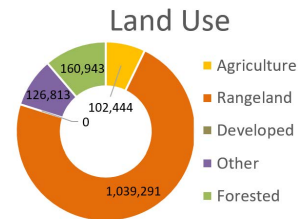
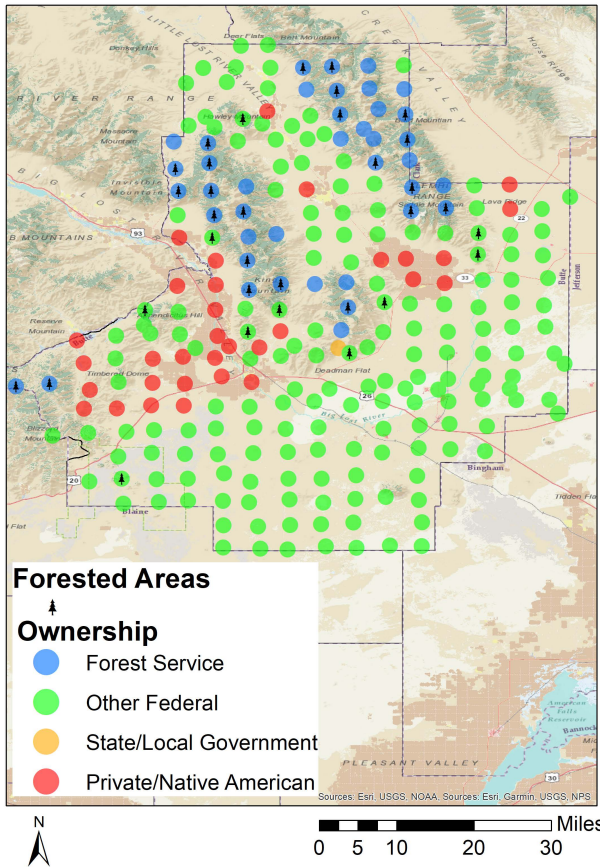
University of Idaho
Policy Analysis Group

Land Base Overview

The Forest Inventory and Analysis (FIA) program administered by the USDA Forest Service serves as our national forest inventory. In Idaho, each plot represents roughly 6,000 acres and is revisited on a 10-year cycle beginning in 2004. The data collected provides valuable information on forest extent and stocks as well as how those stocks change over time. This fact sheet details the FIA data for Butte County, Idaho.

Area Sq Miles	Forested Acres	% Forested	Total Acres
2,234	160,943	11.3%	1,429,491

Butte County is not highly forested with just over 160,000 acres (11%) of its land base classified as forest. Forest Service forests are located in the northern parts of the county while other federal land is concentrated across the south part of the county.



Distribution of 244 Idaho USDA Forest Inventory and Analysis Plots by land ownership

Area and Volume by Forest Type and Owner

Equally important to the overall extent of the county's forests is its ownership and prevalent forest types. Forest extent by type and the volume on those acres provides insight into the economic and ecological opportunities given each owner's management focus. Butte County is largely Forest Service land in softwood forest types like Douglas-fir.

	millions of cubic feet					thousand acres				
	Forest Service	Other Federal	State/Local	Private/Native American	Total	Forest Service	Other Federal	State/Local	Private/Native American	Total
Softwood										
Douglas-fir	107	8	0	0	116	52	12	0	0	64
Juniper	1	16	0	0	17	5	27	0	0	32
Other Softwood	39	3	0	0	42	27	10	0	0	37
Hardwood										
Hardwood	5	1	0	0	5	25	3	0	0	27
Total	151	29	0	0	180	109	52	0	0	160



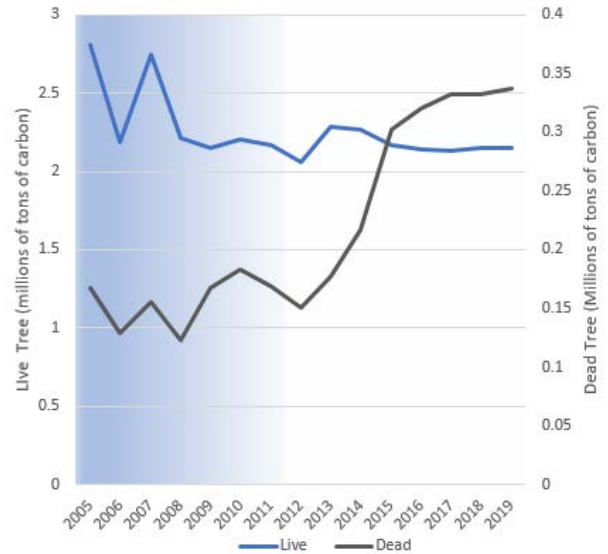
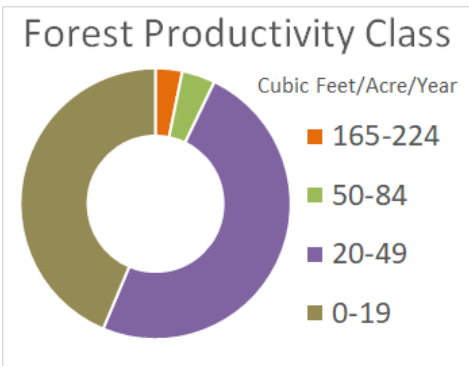
Butte County Forest Inventory Change



University of Idaho
Policy Analysis Group

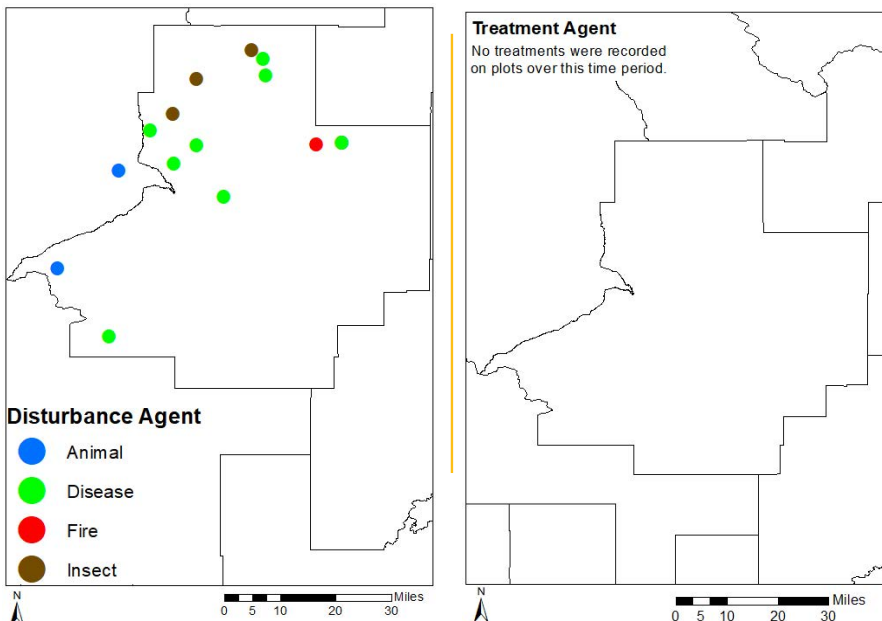
Forest Carbon

Forests are a significant part of the global carbon cycle. The productivity class indicates potential annual forest growth. This potential along with current forest size and stocking affect how much carbon a forest can intake, sequestering it from atmospheric accounts into woody biomass. Butte County's forests have been emitting carbon at a rate of 0.02 MT C per year since 2013. Dead tree carbon pools have fluctuated over that time period ranging between 0.1 and 0.35 MT C in stocks.



Each year since 2004, the FIA has measured 1/10th of the plots in Butte County. This means that a full sample was not collected until 2013. This is indicated by the blue coloring on the graph, which becomes lighter as more plots are measured. The early measurements are less precise than the ones after 2013, when all plots were measured, and the remeasuring process began.

Disturbance



Disturbances, either natural or management-related, are another factor of change affecting Idaho's forests. Disease is the largest factor of disturbance observed in the FIA data for Butte County, and becoming a bigger problem as it infects more trees. Forest management related disturbance did not occur during this time period.

	Forest Service	Other Federal	State/Local	Private/ Native American	Total
----- acres -----					
Disturbance					
Disease	9,134	2,922	0	0	12,056
Fire	1,544	0	0	0	1,544
Insect	7,719	772	0	0	8,491
Other Disturbance	10,807	0	0	0	10,807
Total	29,203	3,694	0	0	32,897
Management					
Planting	0	0	0	0	0
Cutting	0	0	0	0	0
Other Treatment	0	0	0	0	0
Preparation	0	0	0	0	0
Total	0	0	0	0	0
Grand Total	29,203	3,694	0	0	32,897