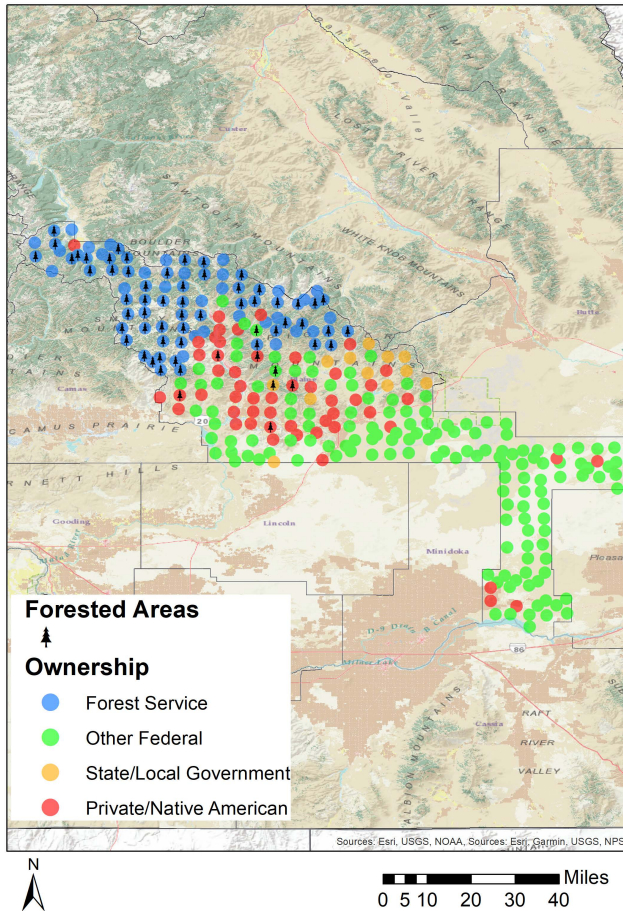




Blaine County Forest Inventory Stocks



University of Idaho
Policy Analysis Group



Distribution of 289 Idaho USDA Forest Inventory and Analysis Plots by land ownership

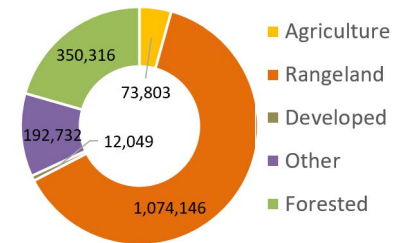
Land Base Overview

The Forest Inventory and Analysis (FIA) program administered by the USDA Forest Service serves as our national forest inventory. In Idaho, each plot represents roughly 6,000 acres and is revisited on a 10-year cycle beginning in 2004. The data collected provides valuable information on forest extent and stocks as well as how those stocks change over time. This fact sheet details the FIA data for Blaine County, Idaho.

Area Sq Miles	Forested Acres	% Forested	Total Acres
2,661	350,316	20.6%	1,703,046

Blaine County has just over 350,000 acres (20%) of its land base classified as forest. Forest Service forests dominate the northwestern parts of the county while other federal land is concentrated mostly in the southeast.

Land Use



Area and Volume by Forest Type and Owner

Equally important to the overall extent of the county's forests is its ownership and prevalent forest types. Forest extent by type and the volume on those acres provides insight into the economic and ecological opportunities given each owner's management focus. Blaine County is dominated by Forest Service land in largely softwood forest types like True Fir and Douglas-fir.

	millions of cubic feet					thousand acres				
	Forest Service	Other Federal	State/Local	Private/Native American	Total	Forest Service	Other Federal	State/Local	Private/Native American	Total
Softwood										
Douglas-fir	352	0	2	6	361	143	0	5	6	154
Lodgepole Pine	1	0	0	0	1	8	0	0	0	8
True Fir	109	0	0	0	109	76	0	0	0	76
Hardwood										
Total	480	5	2	12	499	309	8	5	26	347



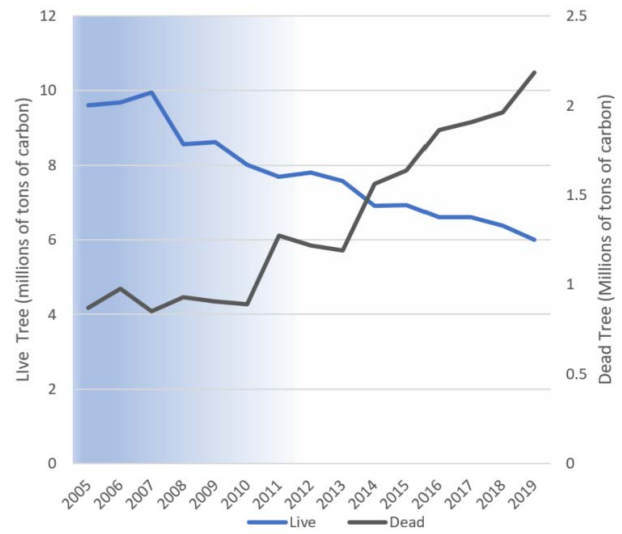
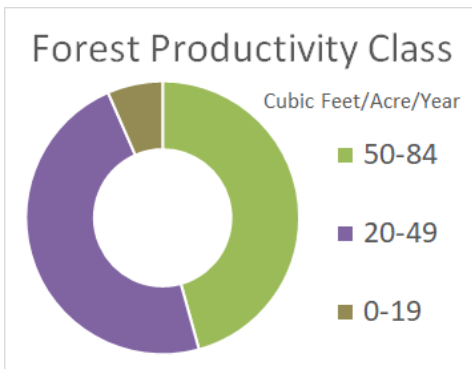
Blaine County Forest Inventory Change



University of Idaho
Policy Analysis Group

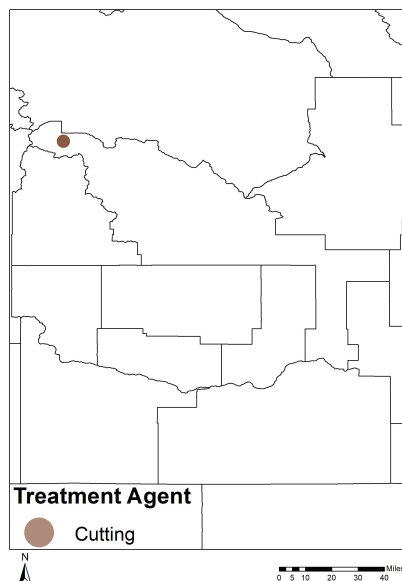
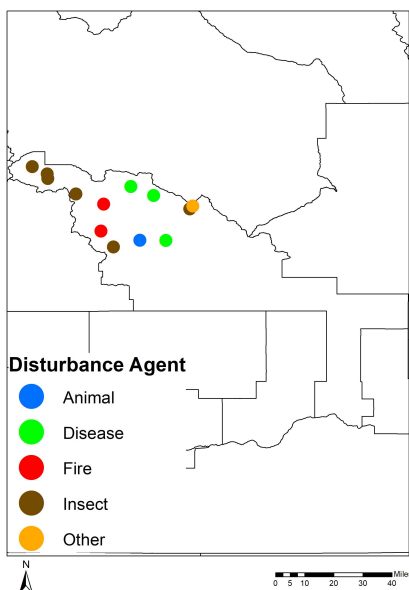
Forest Carbon

Forests are a significant part of the global carbon cycle. The productivity class indicates potential annual forest growth. This potential along with current forest size and stocking affect how much carbon a forest can intake, sequestering it from atmospheric accounts into woody biomass. Blaine County's forests have been adding carbon from the atmosphere at a rate of 0.2 MT C per year since 2013. Dead tree carbon pools have risen over that time period ranging between 1 and 2 MT C in stocks.



Each year since 2004, the FIA has measured 1/10th of the plots in Blaine County. This means that a full sample was not collected until 2013. This is indicated by the blue coloring on the graph, which becomes lighter as more plots are measured. The early measurements are less precise than the ones after 2013, when all plots were measured, and the remeasuring process began.

Disturbance



Disturbances, either natural or management-related, are another factor of change affecting Idaho's forests. Insects are the largest factor of disturbance observed in the FIA data for Blaine County, and becoming a bigger problem as they infect more trees. Forest management related disturbance is much smaller.

	Forest Service	Other Federal	State/Local	Private/ Native American	Total
----- acres -----					
Disturbance					
Disease	3,622	0	0	1,812	5,434
Fire	14,496	0	0	0	14,496
Insect	22,196	0	0	0	22,196
Other Disturbance	5,437	0	0	3,171	8,608
Total	45,751	0	0	4,984	50,735
Management					
Planting	0	0	0	0	0
Cutting	604	0	0	0	604
Other Treatment	0	0	0	0	0
Preparation	0	0	0	0	0
Total	604	0	0	0	604
Grand Total	46,355	0	0	4,984	51,339