



Idaho's Forest Inventory Change



University of Idaho
Policy Analysis Group

Forest Carbon

High transaction costs: project development is usually done by a third party but can be completed inside the tribe. The *measuring, monitoring, and verification* can have higher costs for small land o

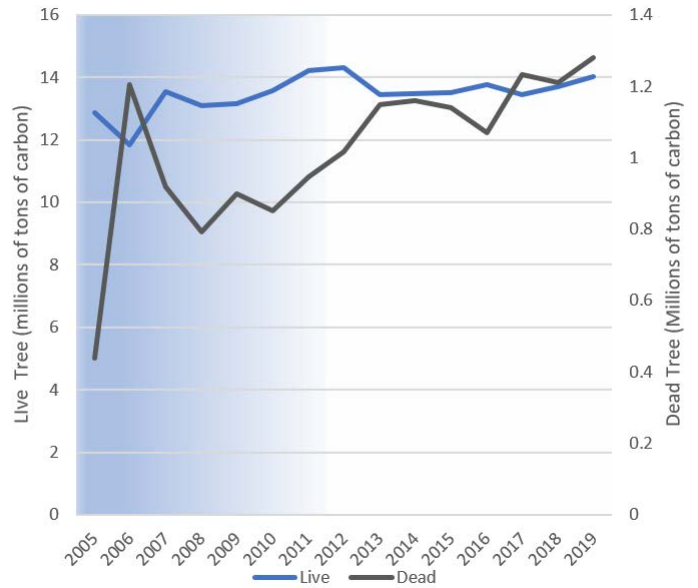
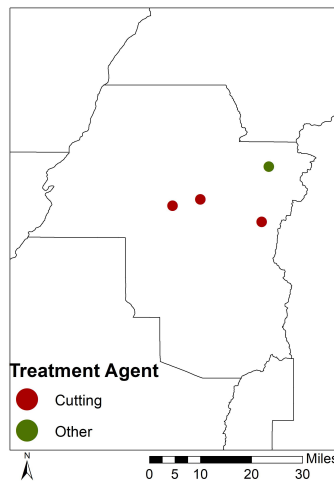
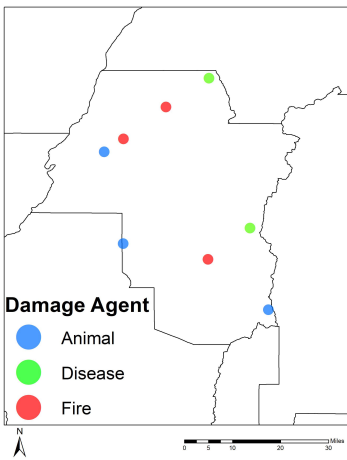


Table of change would go here

Disturbance

Words about the disturbance dominated by disease in north



| 2020 | Nat. For | Nat. Park | BLM | State | Private |
|---------------|------------------|---------------|---------------|----------------|----------------|
| Insect | 1,286,776 | 0 | 38,297 | 25,560 | 123,696 |
| Disease | 1,301,500 | 11,823 | 10740 | 84,571 | 197,746 |
| Fire | 244,656 | 0 | 0 | 0 | 7,681 |
| Animal | 92,704 | 0 | 4828 | 19,667 | 47,884 |
| Weather | 41,722 | 0 | 0 | 6,024 | 8,328 |
| Vegetation | 0 | 0 | 0 | 0 | 0 |
| Unknown | 9,213 | 0 | 0 | 0 | 0 |
| Human-induced | 1,506 | 0 | 0 | 0 | 8328 |
| Geologic | 81,560 | 0 | 0 | 0 | 0 |
| Total | 3,059,636 | 11,823 | 53,865 | 135,822 | 393,662 |

Issued Credits: Represents one metric ton of CO2 from the atmosphere