



# Ada County Forest Inventory Stocks



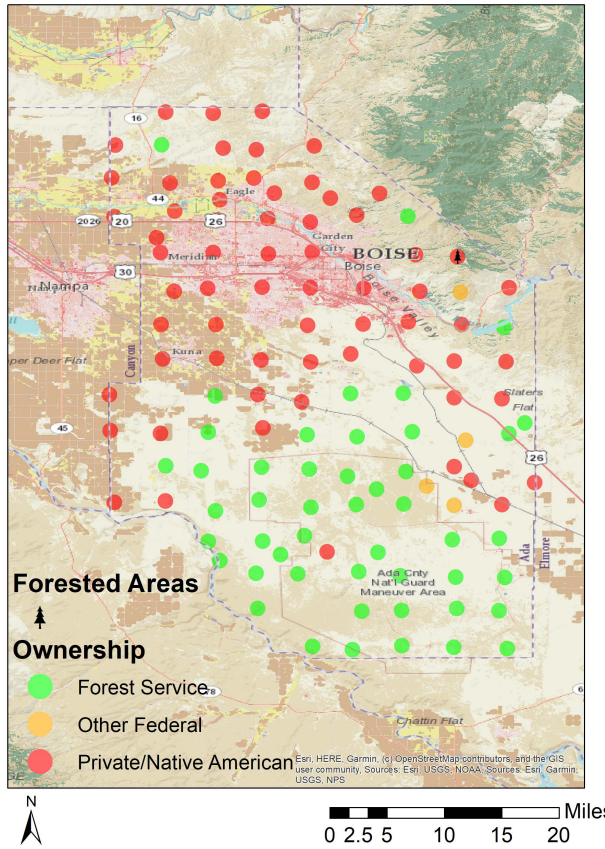
University of Idaho  
Policy Analysis Group

## Land Base Overview

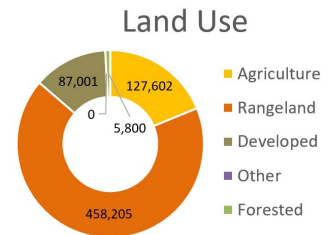
The Forest Inventory and Analysis (FIA) program administered by the USDA Forest Service serves as our national forest inventory. In Idaho, each plot represents roughly 6,000 acres and is revisited on a 10-year cycle beginning in 2004. The data collected provides valuable information on forest extent and stocks as well as how those stocks change over time. This fact sheet details the FIA data for Ada County, Idaho.

Area Sq Miles	Forested Acres	% Forested	Total Acres
1,060.33	5,800	0.9%	678,608

Ada County is not highly forested with just under 6,000 acres (0.9%) of its land base classified as forest. Private and Native American lands dominate the northern parts of the county while the Forest Service land is concentrated mostly in the south.



Distribution of 117 Idaho USDA Forest Inventory and Analysis Plots by land ownership



## Area and Volume by Forest Type and Owner

Equally important to the overall extent of the county's forests is its ownership and prevalent forest types. Forest extent by type and the volume on those acres provides insight into the economic and ecological opportunities given each owner's management focus. Ada County has softwoods such as Ponderosa Pine found in State owned lands.

	Private/ Native					Private/ Native					
	Forest Service	Other Federal	State/ Local	American	Total	Forest Service	Other Federal	State/ Local	American	Total	
-----millions of cubic feet-----						-----thousand acres-----					
<b>Softwood</b>											
Ponderosa Pine	0	0	5	0	5	0	0	6	0	6	
<b>Total</b>	0	0	5	0	5	0	0	6	0	6	



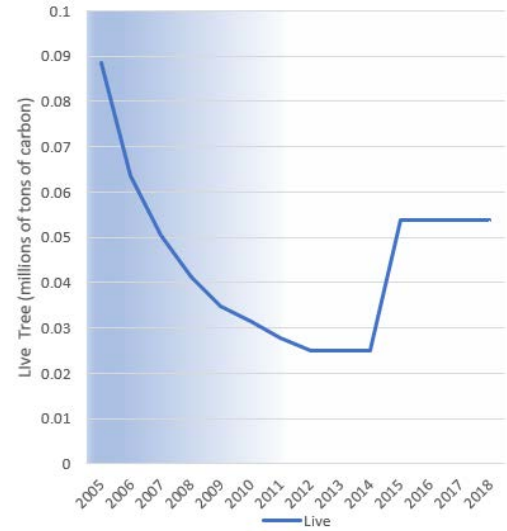
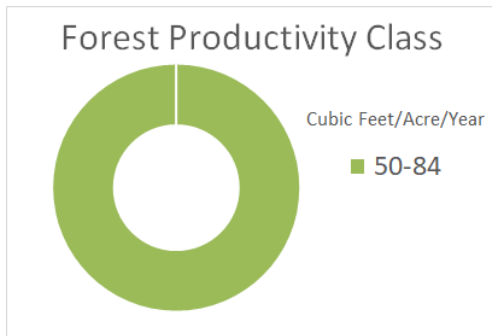
# Ada County Forest Inventory Change



University of Idaho  
Policy Analysis Group

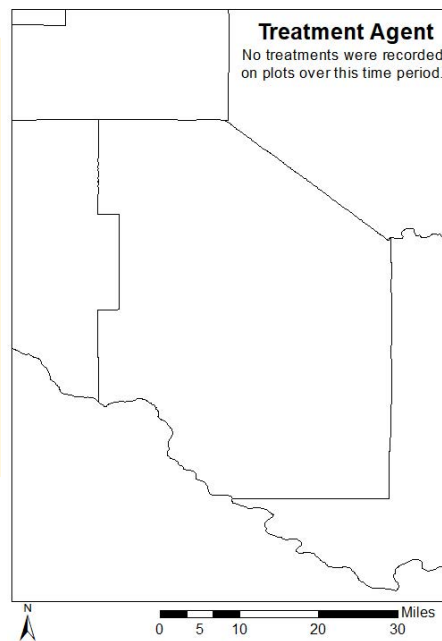
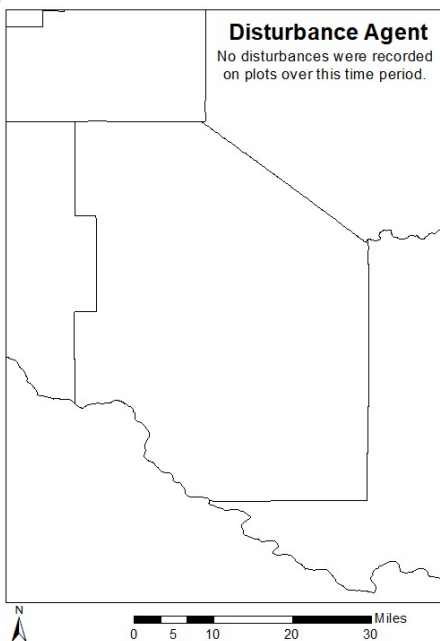
## Forest Carbon

Forests are a significant part of the global carbon cycle. The productivity class indicates potential annual forest growth. This potential along with current forest size and stocking affect how much carbon a forest can intake, sequestering it from atmospheric accounts into woody biomass. Ada County's forests have been removing carbon from the atmosphere at a rate of 0.004 MT C per year since 2013. Dead tree carbon pools were not measured during this time period..



Each year since 2004, the FIA has measured 1/10th of the plots in Ada County. This means that a full sample was not collected until 2013. This is indicated by the blue coloring on the graph, which becomes lighter as more plots are measured. The early measurements are less precise than the ones after 2013, when all plots were measured, and the

## Disturbance



Disturbances, either natural or management-related, are another factor of change affecting Idaho's forests. No disturbances or treatments were recorded on the plots in Ada County during this time period.