

**FACULTY
SUCCESS
SEMINARS**



**University
of Idaho**

*Please keep your microphone
muted until the Q&A session*

M. J. MURDOCK CHARITABLE TRUST PARTNERS IN SCIENCE PROGRAM

RESEARCH AND FACULTY DEVELOPMENT FACULTY SUCCESS SEMINAR SERIES

Carly Cummings, PhD, CPRA

Director, Office of Research and Faculty Development

Guest Experts: Kim Newman, Program Director,
Murdock Trust; PIS Awardee Panel

Please note that this session is being recorded

OFFICE OF RESEARCH AND FACULTY DEVELOPMENT (RFD)

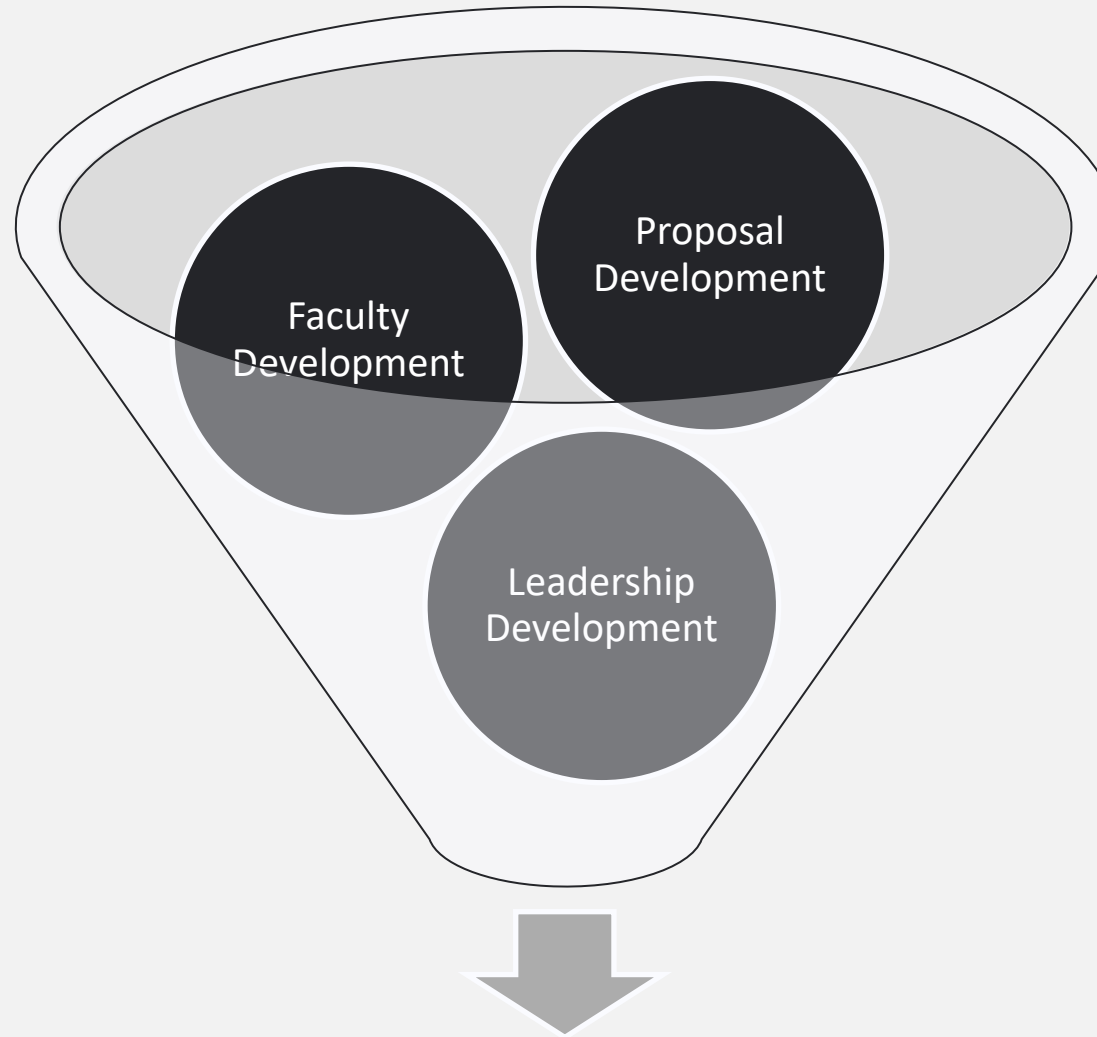


I Mission: To provide the resources and services to University of Idaho faculty that enhance their success and productivity in their field of scholarly efforts, with the ultimate goal of growing the U of I's research enterprise

- Alignment with U of I strategic plan
- Across all disciplines

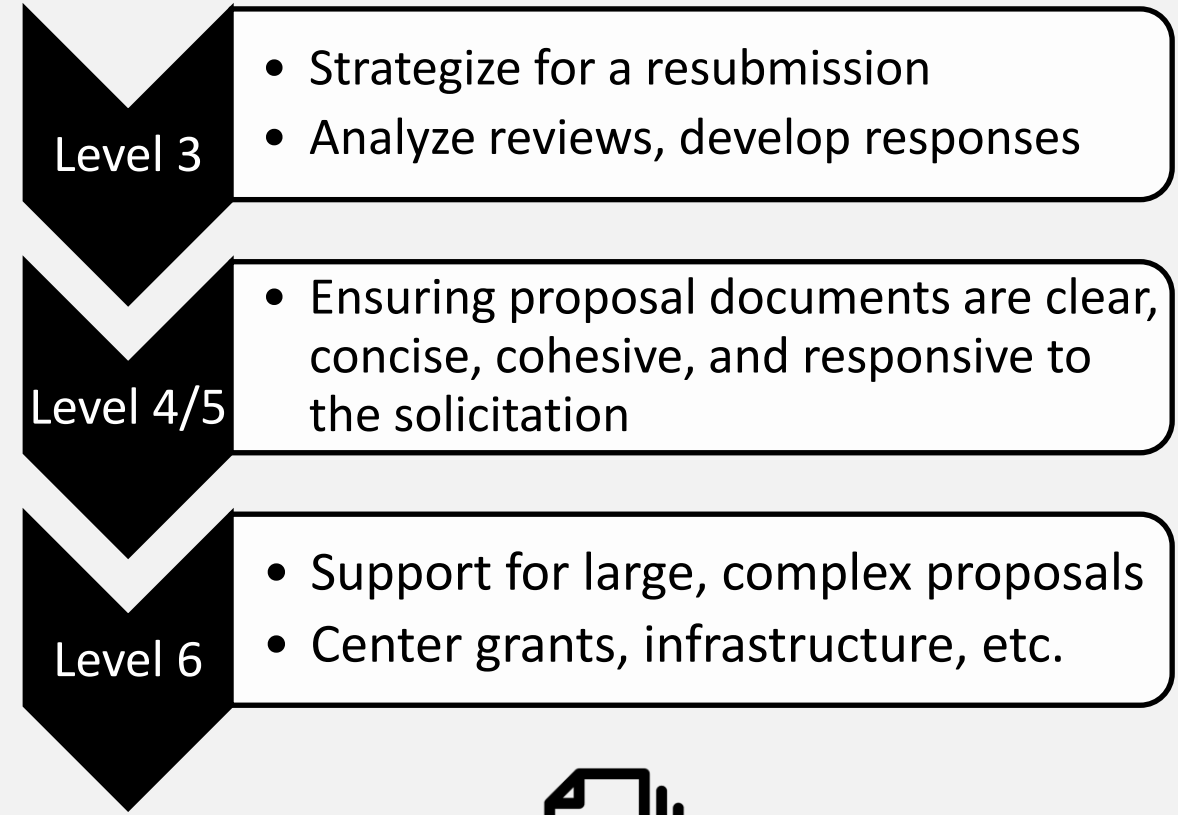
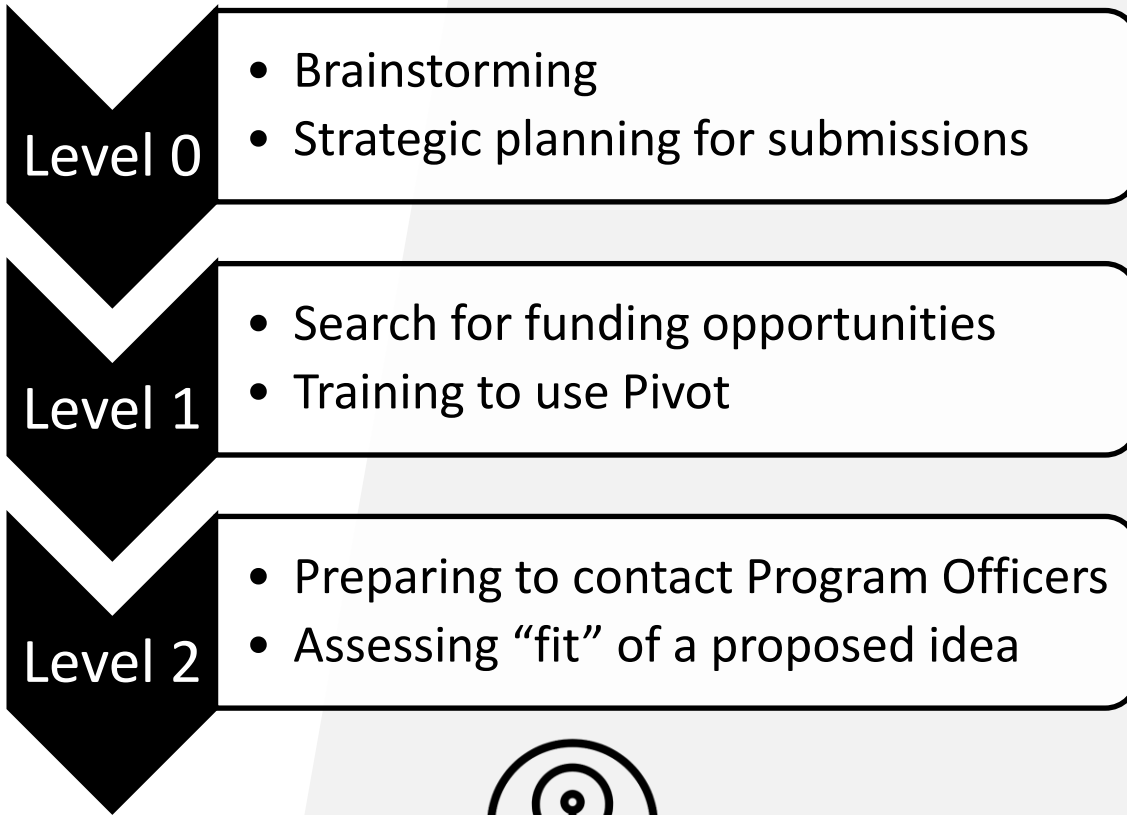


WHAT DOES RFD DO?



Successful, funded research leaders

PROPOSAL DEVELOPMENT SERVICES



REQUEST RFD SERVICES

All services are optional and are granted on a first come, first served basis

FACULTY SUCCESS SEMINARS



SPRING 2022

- Jan. 19** Find Funding with Pivot, a Database of Grant Opportunities and More
- Jan. 26** Idaho Higher Education Research Council (HERC) Funding Opportunities
- Feb. 9** Lessons Learned from Serving on Proposal Review Panels
- Feb. 23** NSF Research Traineeship (NRT) Program: Strategies for Competitive Proposals
- Mar. 2** NSF CAREER: Getting Started on Your Proposal - *Now is the Time!*
- Mar. 30** First Impressions: Steps to Create a Captivating Proposal Title and First Page
- Apr. 6** Partnering with the U of I Project ECHO on Your Research: Why and How
- Apr. 13** Diversity, Equity, Inclusion, and Belonging: Broadening Participation in Funded Research



scan this to
zoom with us

ZOOM ID

uidaho.zoom.us/j/81586190096

FALL 2021

- Sept. 8** Find Funding with Pivot, a Database of Grant Opportunities and More
- Sept. 15** M.J. Murdock Charitable Trust's Partners in Science Program
- Sept. 29** Partnering with the U of I McClure Center on Your Research: Why and How
- Oct. 6** Working with the Research and Faculty Development Team to Enhance the Competitiveness of Your Next Proposal
- Oct. 13** NSF CAREER: Essential Steps Toward Developing a Competitive Proposal
- Oct. 20** Improving Your Grant Competitiveness: Strategies for Resubmission
- Nov. 3** UPDATE: Mountain West Clinical and Translational Research-Infrastructure Network (MW CTR-IN) Funding
- Nov. 10** NSF S-STEM: Strategies for Competitive Proposals



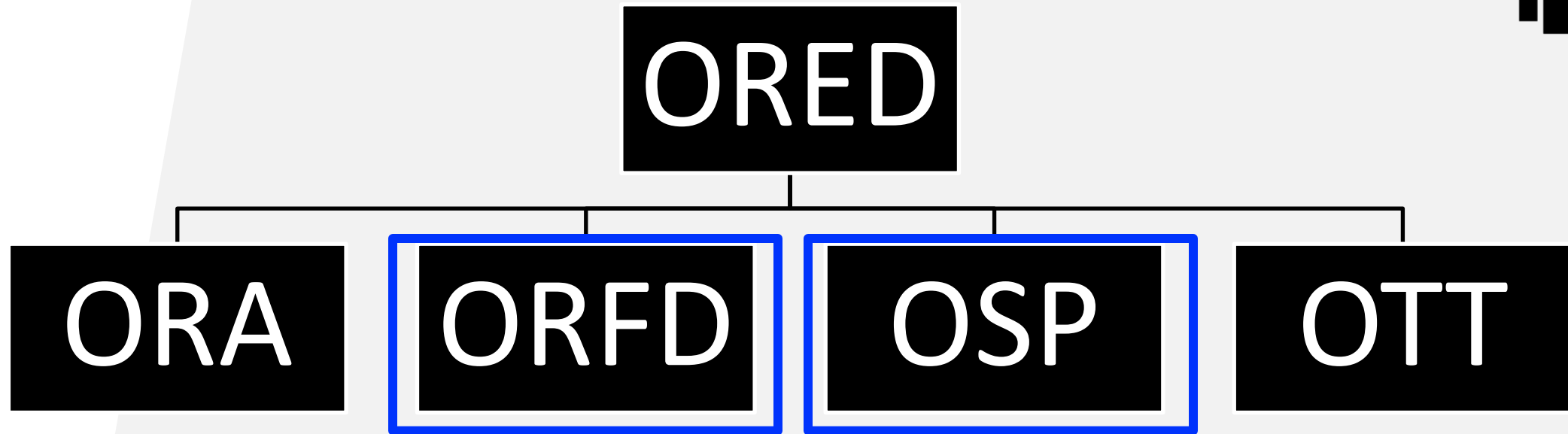
**WE GUIDE THE DEVELOPMENT
OF COMPETITIVE EXTERNAL
GRANT PROPOSALS**

**Office of Research and
Faculty Development**

Email: ored-rfdteam@uidaho.edu
Website: uidaho.edu/orfd



OFFICE OF RESEARCH AND ECONOMIC DEVELOPMENT (ORED)



ORA: Office of Research Assurances

OSP: Office of Sponsored Programs

OTT: Office of Technology Transfer



Partners in Science

Kim Newman

September 2021

The vision of Partners in Science is to provide high school science teachers with the opportunity to work at the cutting edge of science, to revitalize their teaching, and to help translate their research experience into the teaching of science.



Partners in Science

- › Since 1990...
 - › Over 300 scientists
 - › Nearly 50 research institutions
 - › Over 500 teachers
 - › More than \$12,000,000 granted





[Video: The impact of Partners](#)



Partners in Science
A MURDOCK TRUST PROGRAM

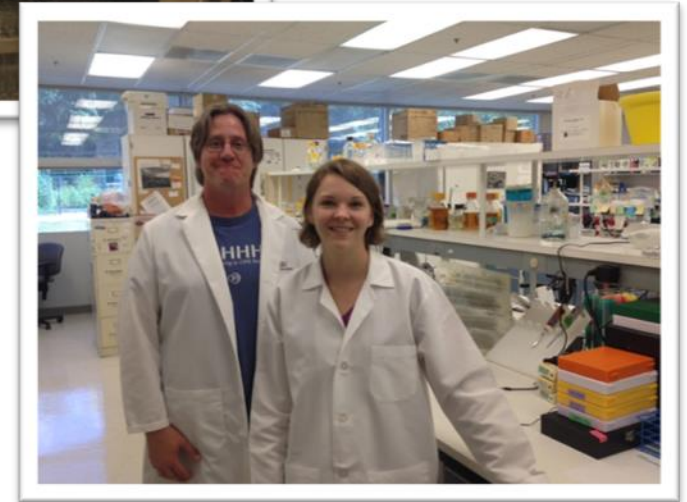
How it works

- › 2 summers in a college or university lab pursuing research with a mentor
- › 2 conferences
 - › August regional
 - › January national
 - › 1st Years—Poster presentation
 - › 2nd Years—Oral presentation



Partners in Science Grant

	1 st Year	2 nd Year
High school teacher stipend	\$6,500	\$6,500
Lab funds	\$1,500	\$1,500
Academic year professional enrichment	\$500	\$500
Travel funds for national conference	\$1,000	\$1,000
Total	\$9,500	\$9,500



How to apply



Applications are completed by partners and mentors and are submitted by mentors under the auspices of their research institutions

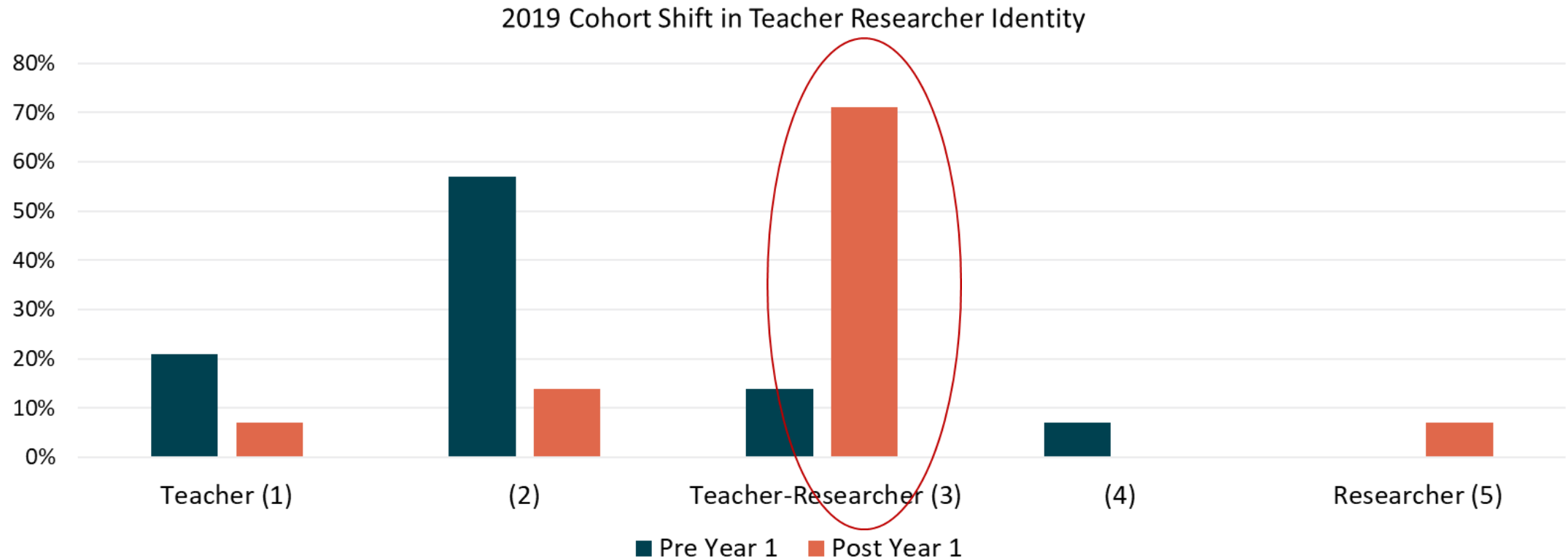


The application deadline is December 1



Partners in Science
A MURDOCK TRUST PROGRAM

Program Impact on Teacher Identity

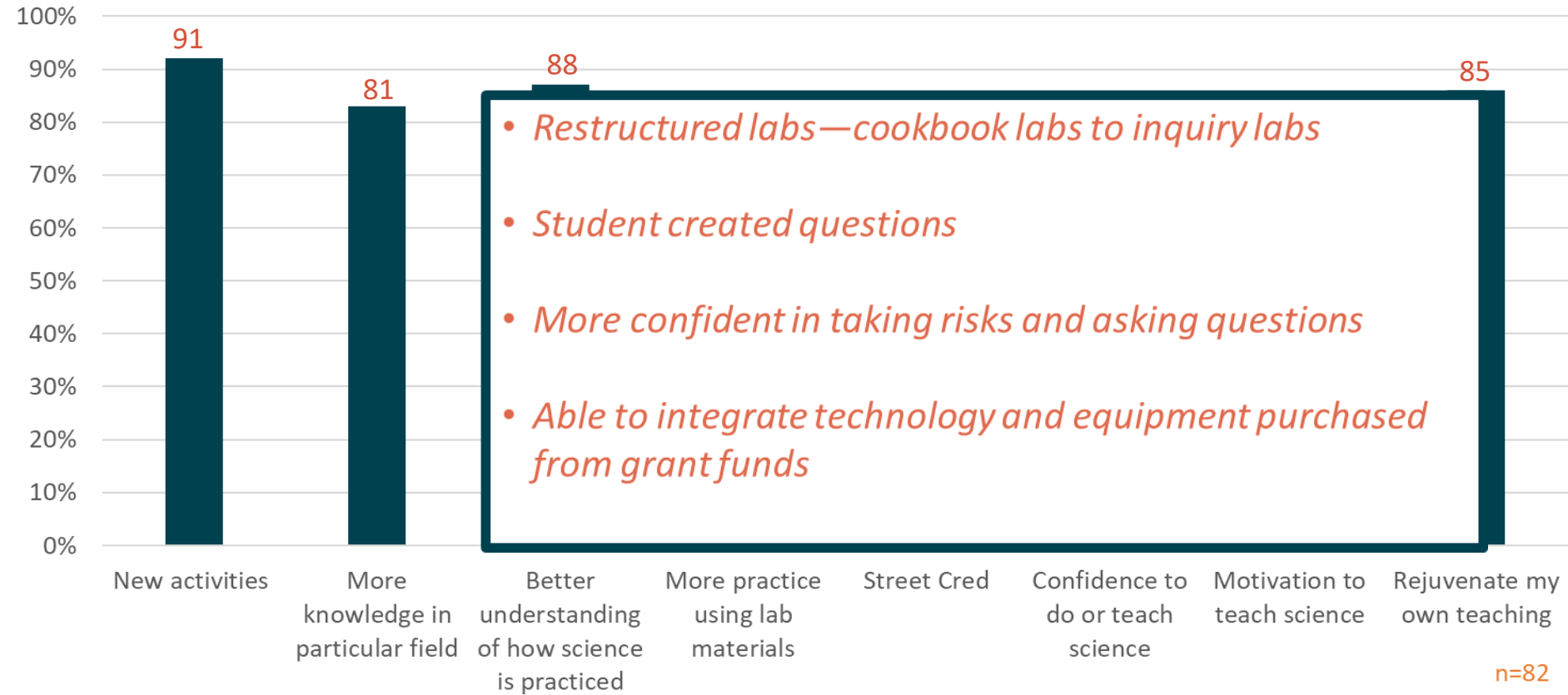


Overall, the program shifted current participants from a teacher identity towards a teacher-researcher identity. This teacher-researcher identity is maintained by alumni.



Partners in Science
A MURDOCK TRUST PROGRAM

Impact of Summer Research Experience



I was able to work with a fantastic, motivated and mature individual, who loved the experience and opportunity of working in my lab which invigorated me.

Dr. Cheryl Jorcyk, Boise State University



Love the interaction we gain with the teacher and ultimately with their students. It is the ability to share our daily work, the ups and the downs—the sacrifices that we make for the love of what we do.

Dr. Henryk Urbanski, Oregon Health & Sciences University



Impact

25 teachers

3,750
students/year

37,500
students



2008 Partner
Dave Andersen
Bozeman Biology



Thank you

murdocktrust.org

HEAR FROM THE EXPERTS!



U of I Partners in Science faculty awardees

- Dr. Lili Cai, Assistant Professor, Department of Forest, Rangeland, and Fire Sciences
- Dr. Christine Parent, Associate Professor, Department of Biological Sciences
- Dr. Sarah Wu, Assistant Professor, Department of Chemical and Biological Engineering