


CAMPUS OPENING ROADMAP

2020

IDAHO STUDENT
UNION BUILDING



University
of Idaho



ISUB/TLC Reopening Strategy

August, 2020

GENERAL BUILDING INFORMATION

TARGETED REOPENING DATE - JUNE 15, 2020



As one of the most heavily utilized buildings on campus and the hub of many student and community resources, the opening of the ISUB will be a slow and strategic process. Founded upon governmental restrictions and guidelines as well as the availability of resources that may increase the safety of our patrons, building operations and resources will gradually be reinstated.

Adjustments to these plans may be made at any time in response to university and/or government (local, state & federal) guidelines.



SIGNAGE

FACILITY SIGNAGE



Signage will be placed throughout the facility (inside & out) providing information and instruction to all visitors of the ISUB. Some of this signage may include:

Face Coverings Required



FACILITY SIGNAGE



Signage will be placed throughout the facility (inside & out) providing information and instruction to all visitors of the ISUB. Some of this signage will include:

Personal Hygiene & PPE Education

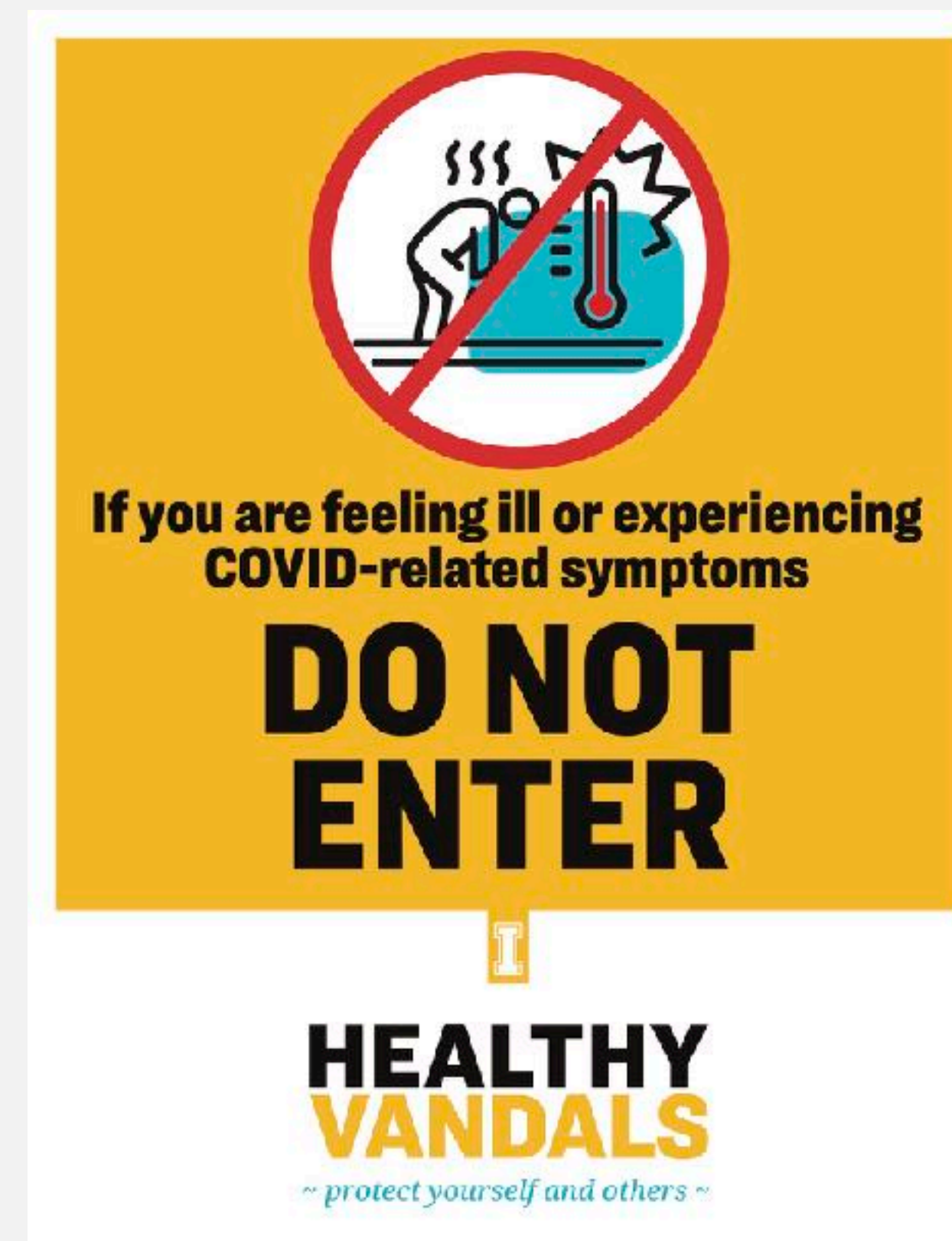


FACILITY SIGNAGE



Signage will be placed throughout the facility (inside & out) providing information and instruction to all visitors of the ISUB. Some of this signage will include:

Facility Use Criteria

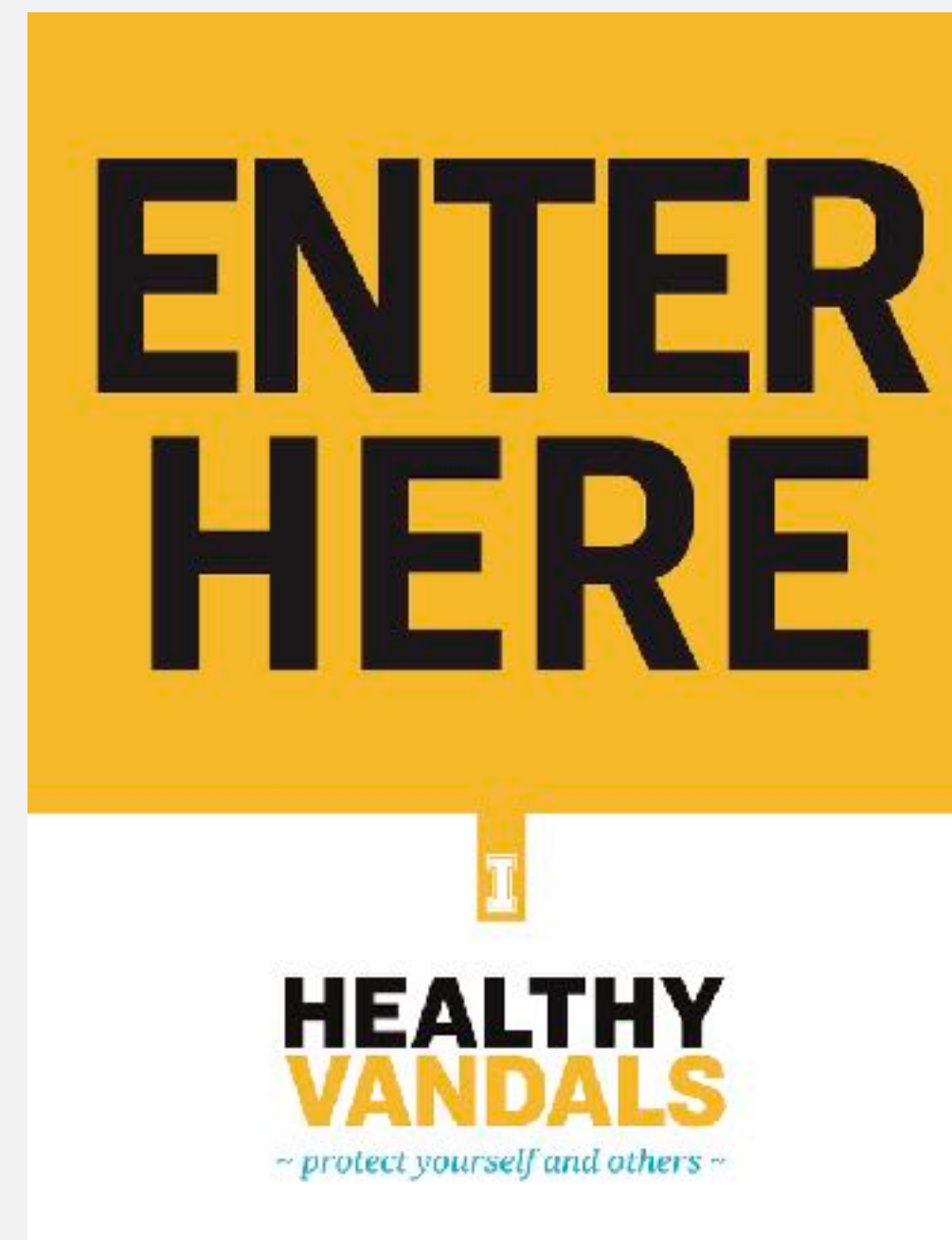


FACILITY SIGNAGE



Signage will be placed throughout the facility (inside & out) providing information and instruction to all visitors of the ISUB. Some of this signage will include:

Directional Signage



ADJUSTED TRAFFIC FLOW

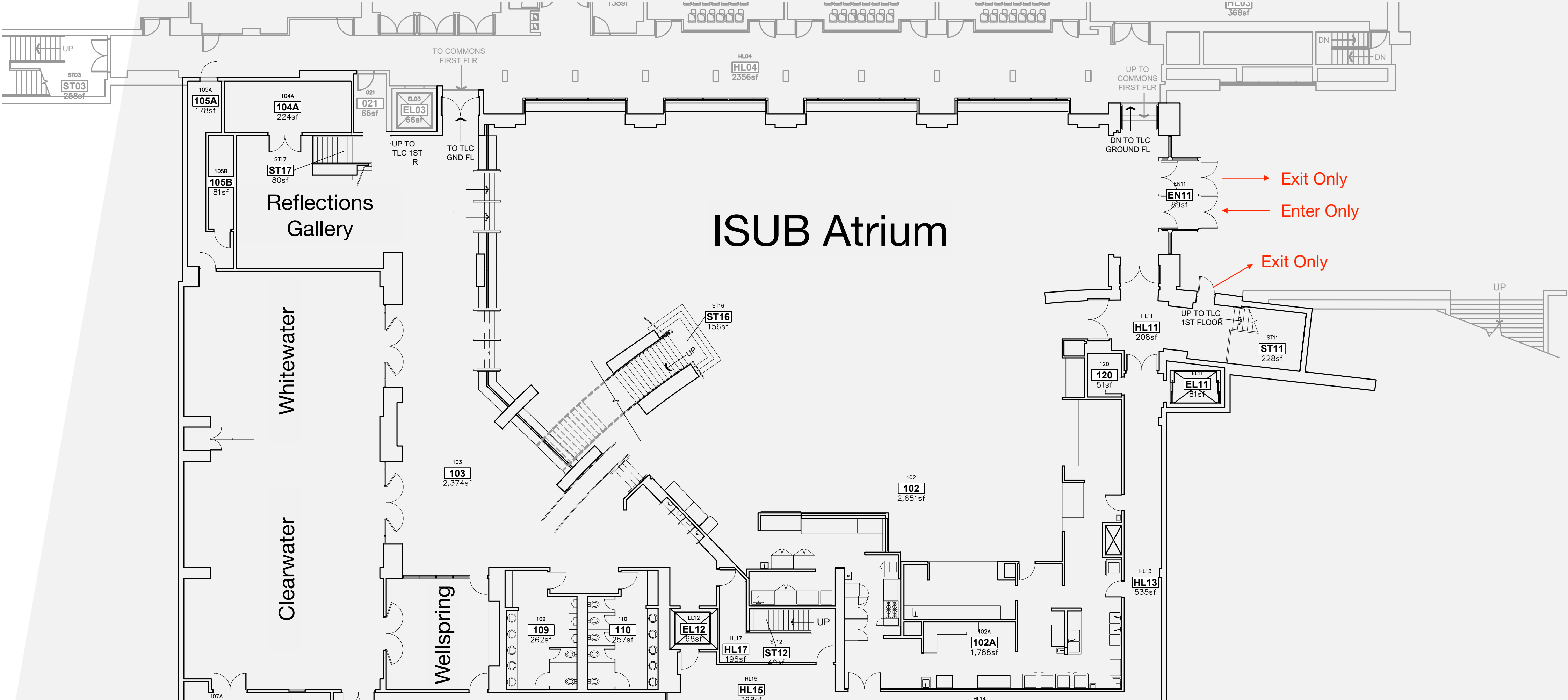
ADJUSTED TRAFFIC FLOW



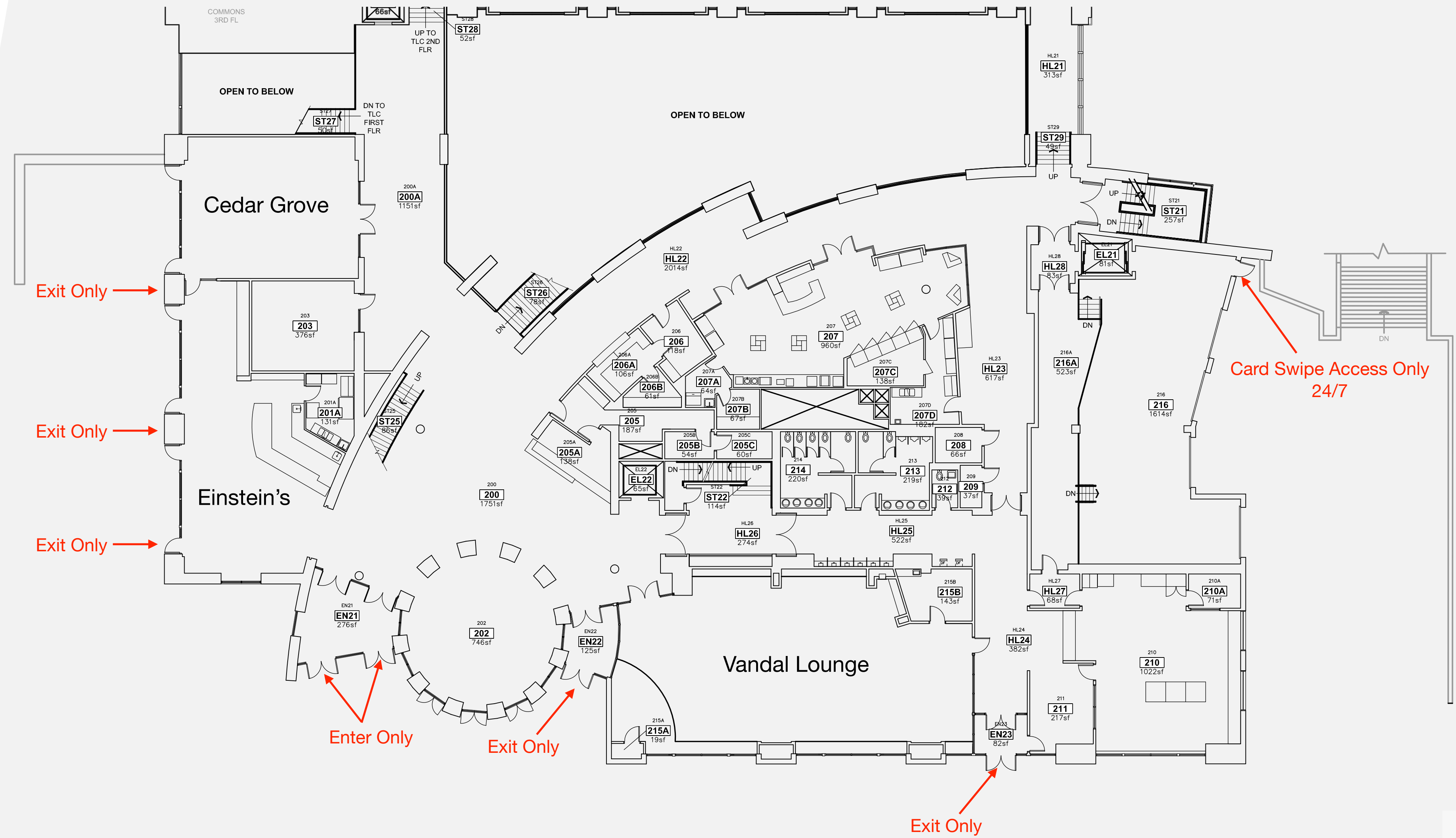
In an attempt to minimize cross traffic and simplify efforts to be socially distant, all points of access to the ISUB/TLC have been designated as exit/entry only.

In the event on an emergency, all points may be utilized as a point of exit from the facility.

ISUB - FLOOR 1



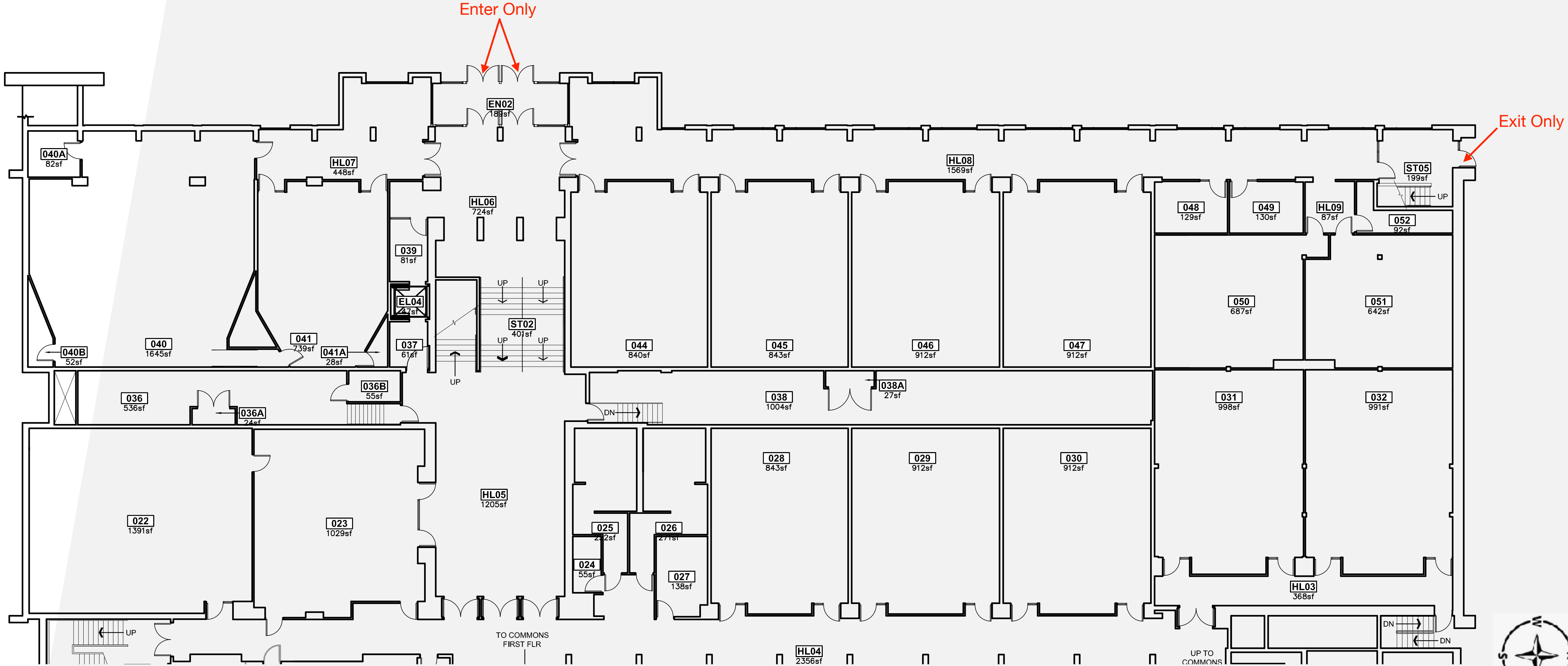
ISUB - FLOOR 2



TLC - GROUND FLOOR



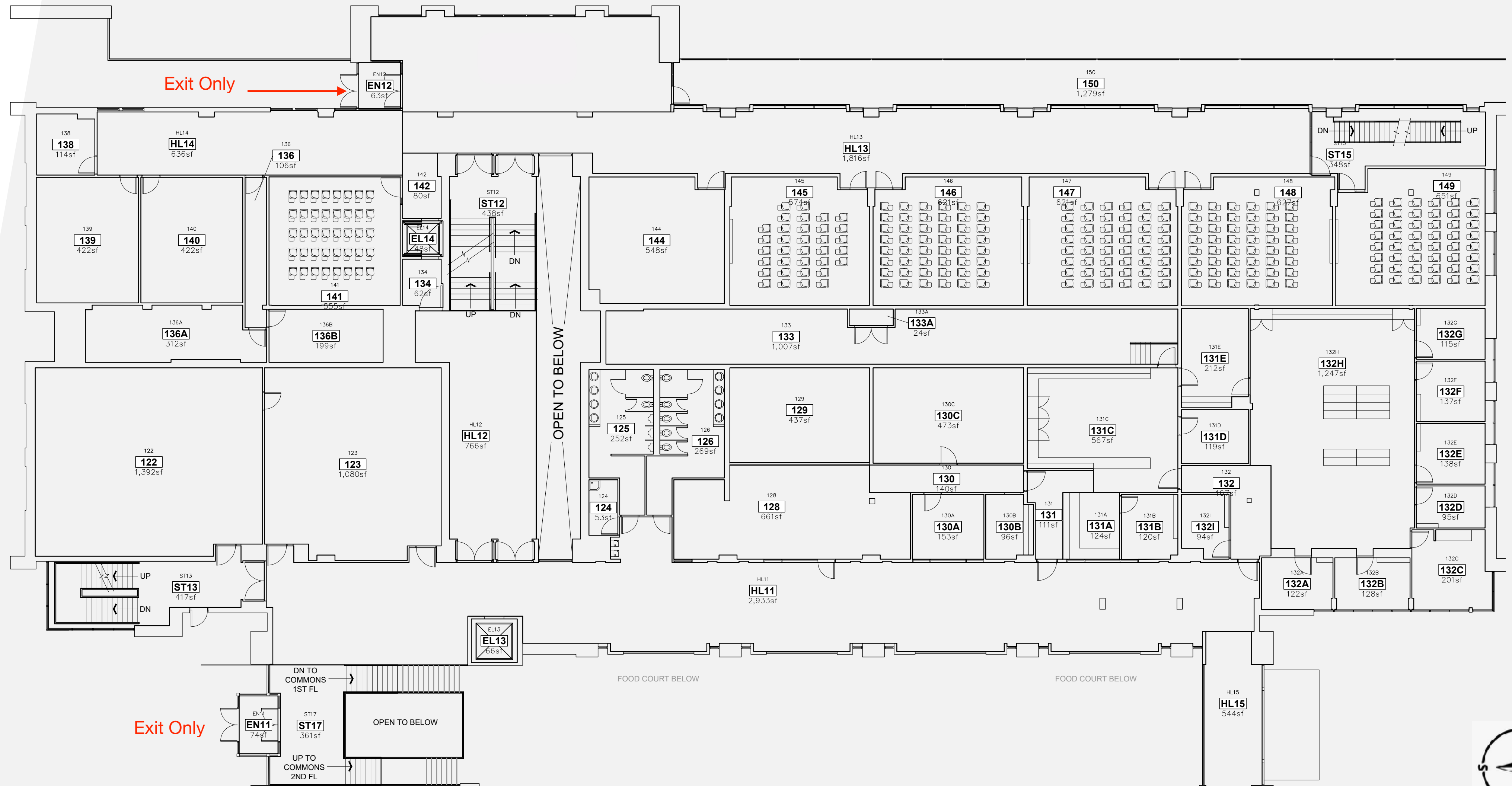
Academic Mall



TLC - FLOOR 1



University Ave.



ADJUSTED ROOM CAPACITIES & EVENT SETUP

ADJUSTED ROOM CAPACITIES & EVENT SETUP



In order to provide an atmosphere where social distancing can occur, the following guidelines & practices will be implemented:

- All room capacities will be adjusted to accommodate social distancing.
- Specific room setups will further decrease the capacity of each space. Capacity adjustments will be made based upon the requested room setup. Capacity adjustments as a result of room layout will be determined by Administrative Operations Event Staff.
- No event setups will be permitted that do not allow for social distancing to occur. For example, theater setup will be done with 6' between each chair.
- Best efforts will be made to ensure hand sanitization stations will be placed at the entrance of each event space entrance.
- Face masks are required while in the building, with limited exceptions. Single use face masks are available at the ISUB Information Desk for those who do not have one of their own.
- Cleaning & disinfecting will occur following the use of each event space.

ADJUSTED MAXIMUM ROOM CAPACITIES



Meeting Space	Total Square Footage	Maximum Occupancy	Theater Layout	Classroom Layout	Dining Layout
Clearwater	1120	30	16	10	15
Whitewater	1676	46	16	10	15
Vandal Lounge	2320	64	-	-	-
Panorama	1081	30	16	10	15
Aurora	1023	28	16	10	15
Horizon	1013	28	16	10	15
Crest	1121	31	16	10	15
International Ballroom	9669	268	220	96	144
Vandal Ballroom	4432	123	112	56	48
Cedar Grove	CURRENTLY UNAVAILABLE				
Wellspring	CURRENTLY UNAVAILABLE				
Chief's	CURRENTLY UNAVAILABLE				



VANDAL DINING

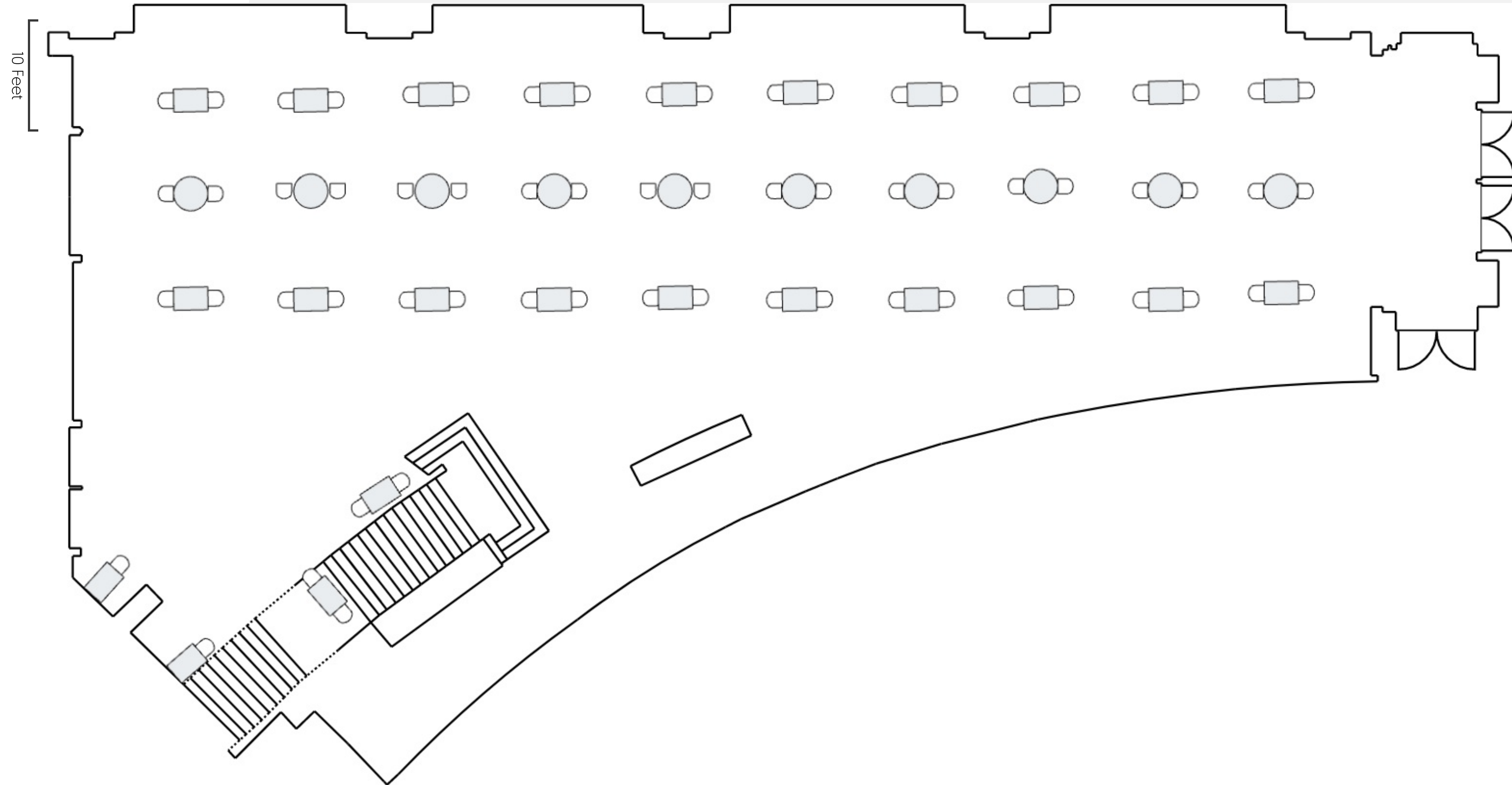
ATRIUM DINING SEATING



Current plans include keeping the dining area of the ISUB Atrium closed until August 1, 2020. Alternative dining seating options are being explored and may be provided outside of the building near the ISUB Rotunda.

Upon reopening seating in the ISUB Atrium, layout plans are as follow:

REVISED ATRIUM DINING SEATING



VANDAL DINING OPENING DATES



Vandal Dining options within the ISUB will open as follows:

Beginning August 10, 2020

Chik-Fil-A

Monday - Friday 10:00 am - 6:00 pm

Beginning August 17, 2020

Qdoba

Monday - Friday 10:00 am - 4:00 pm

Mein Bowl

Monday - Friday 10:00 am - 3:00 pm

Einsteins

Monday - Friday 7:00 am - 4:00 pm

The Grid

Monday - Friday 8:00 am - 4:00 pm