

EDIT CAROUSEL ▾



STEM Core Convening

Highlights Pathways to the Tech Economy



Janet Yowell and Sarah Miller (Colorado Alliance) and Gabe Hanzel-Sello and Dave Gruber (STEM Core) pose in front of the "window" to the 2-mile long Stanford linear accelerator. Photo Credit: Janet Yowell

Spotlight

NSF INCLUDES National Network Convening


Bringing together stakeholders from across STEM field, this convening will facilitate opportunities to read more

05-29-2019 08:00 - 05-30-2019 15:00 ET
Alexandria VA

STEM Core Convening Highlights Pathways to the Tech Economy

POSTED BY:EVANGELINE AMBAT, 04-08-2019 12:00
Contributed by Roxanne Metz More than 100 faculty, counselors, student support specialist, employer read more

Upcoming Events

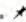
May 14-16, 2019: 

Collective Impact Convening at Chicago, Illinois

May 14 - 16, (ET)

Latest Discussions



Tell us how you contribute to the national movement to broaden participation ... 

BY: EVANGELINE AMBAT

Coordination Hub Twitter

Tweets by @NSFINCLUDESHub 



NSF INCLUDES Hub @NSFINCLUDESHub
.@CIForumTweets' #ciconvening is this week! Check out the livestream of the event: youtube.com/user/TheCIForu...

**AGEP National Research
Meeting
Coeur d'Alene, Idaho
May 19-21, 2019**



**Jermelina Tupas, PhD
Acting Division Director
Human Resource Development
Directorate for Education and
Human Resources
National Science Foundation**





Diverse Pathways in STEM: *Achieving the Dream*

AGEP National Research Meeting
Coeur d'Alene, Idaho • May 19-21, 2019



The National Science Foundation (NSF) is an independent federal agency created by Congress in 1950

- to promote the progress of science
- to advance the national health, prosperity, and welfare
- to secure the national defense



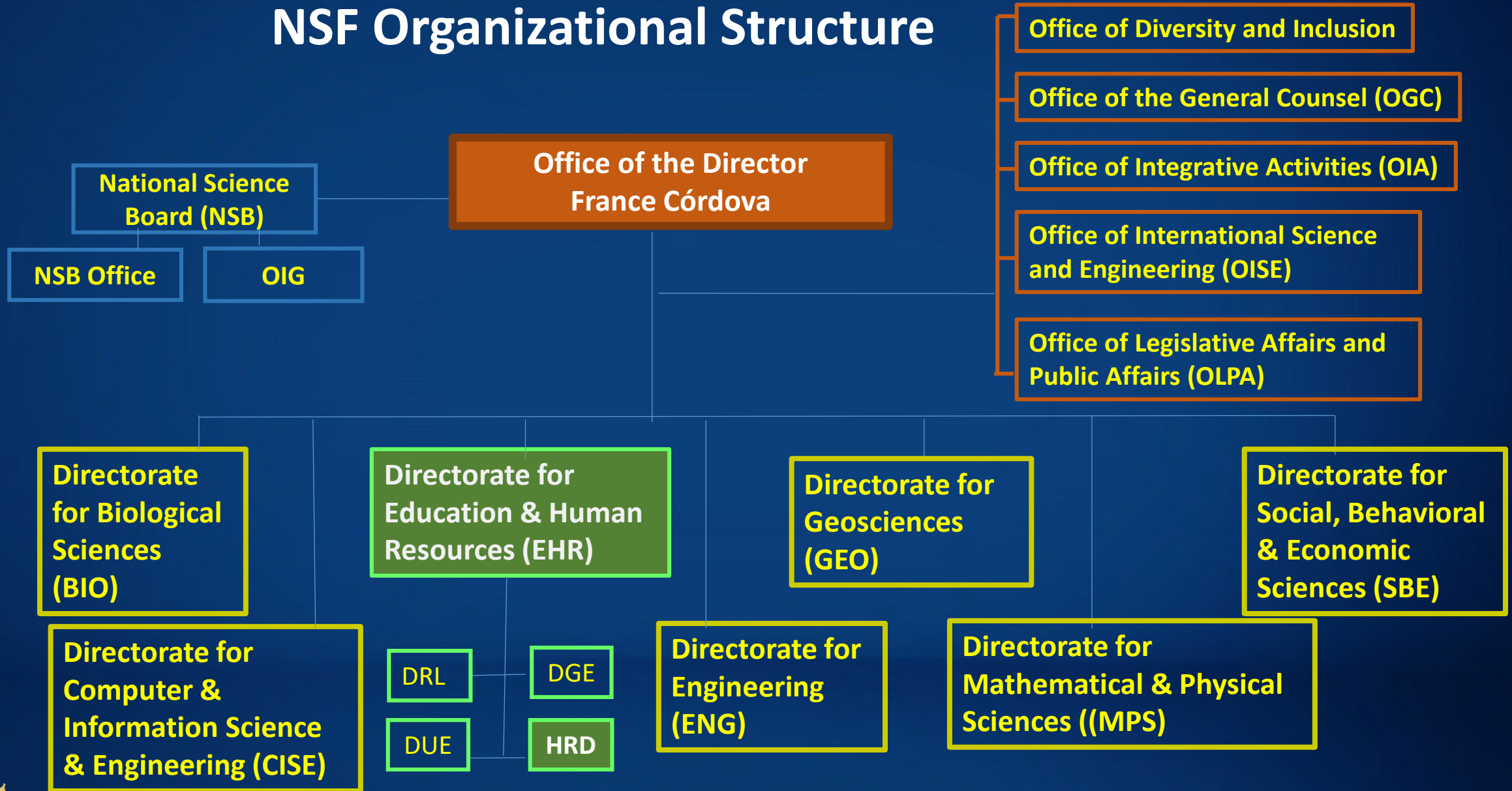
NSF by the Numbers



Numbers shown are based on FY 2018 activities.



NSF Organizational Structure



EHR FY 2019 Budget : \$910M (estimate)





Karen Marrongelle
Assistant Director
Directorate for Education and
Human Resources (EHR)
National Science Foundation



EHR's STEM Education and Human Resource Development Focus

- Capacity Building
- Knowledge Building
- Knowledge Utilization



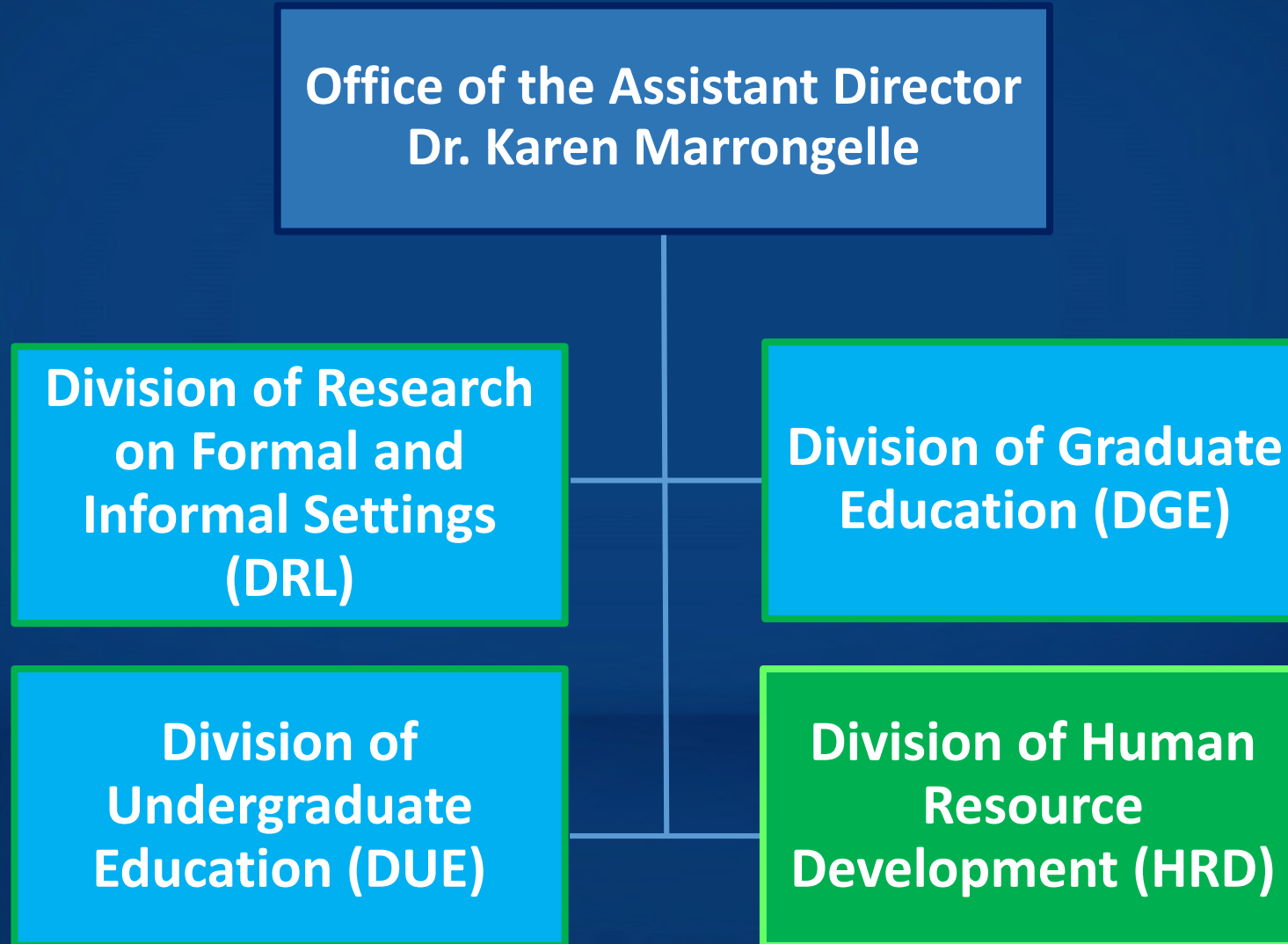
National Science Foundation
WHERE DISCOVERIES BEGIN

- Pre-K to Professoriate
- Lifelong learning
- Citizen Science

- STEM Learning and STEM Learning Environment
- Broadening Participation and Institutional Capacity in STEM
- STEM Workforce Preparation



EHR's Organizational Structure



Division of Human Resource Development (HRD)

- Institutional Change
- Capacity Building
- Research & Development
- Model Development



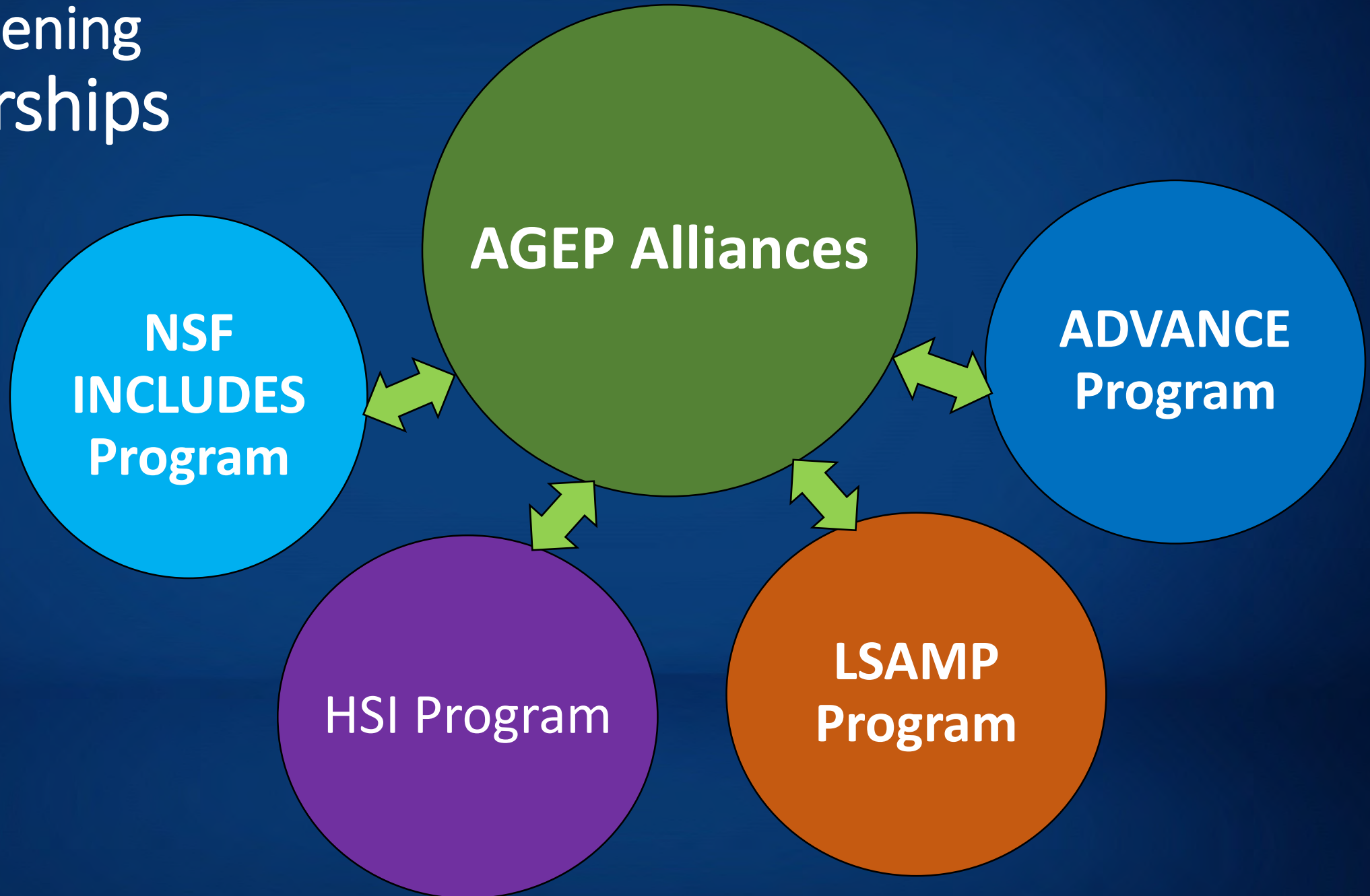
- **AGEP**
- ADVANCE
- CREST
- HBCU-UP
- HSI
- EASE
- ECR
- LSAMP
- NSF INCLUDES
- TCUP



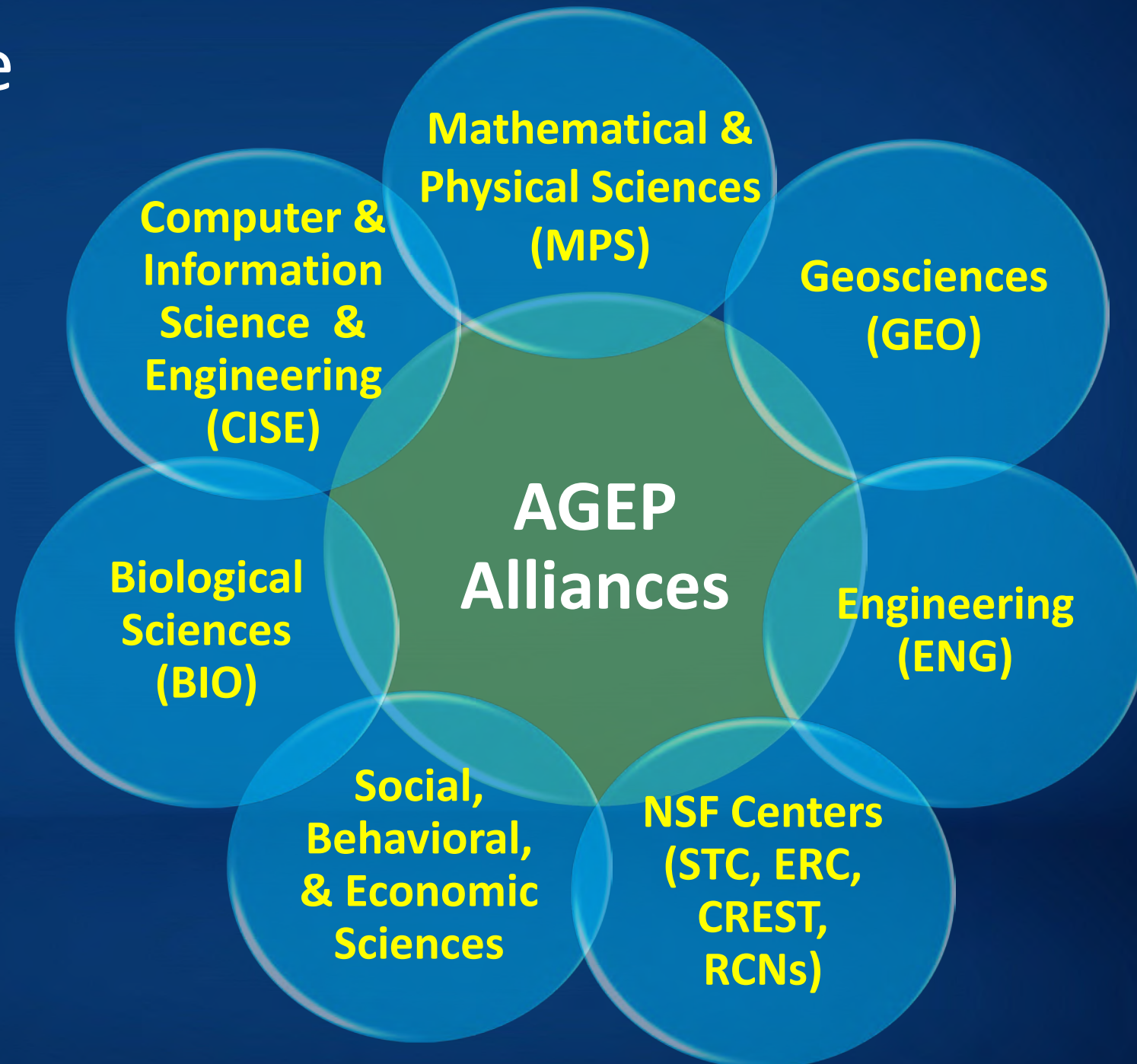
**BROADENING
PARTICIPATION
IN STEM**



Strengthening Partnerships



Challenge to the AGEP Alliances



**Brookhaven
National
Laboratory**

**Lawrence
Berkeley
National
Laboratory**

**Oak Ridge
National
Laboratory**

Office of Science Laboratories

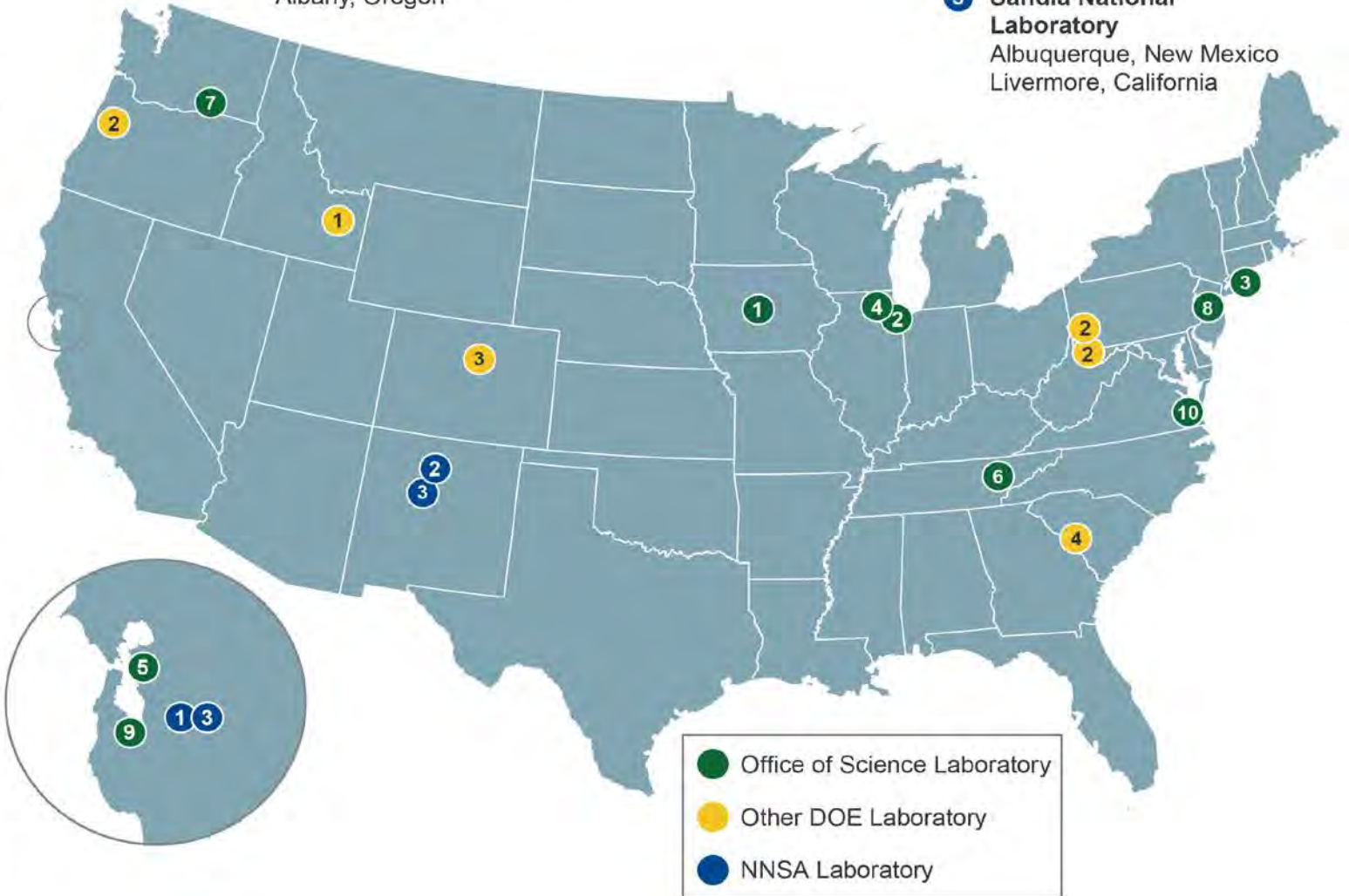
- 1 Ames Laboratory**
Ames, Iowa
- 2 Argonne National Laboratory**
Argonne, Illinois
- 3 Brookhaven National Laboratory**
Upton, New York
- 4 Fermi National Accelerator Laboratory**
Batavia, Illinois
- 5 Lawrence Berkeley National Laboratory**
Berkeley, California
- 6 Oak Ridge National Laboratory**
Oak Ridge, Tennessee
- 7 Pacific Northwest National Laboratory**
Richland, Washington
- 8 Princeton Plasma Physics Laboratory**
Princeton, New Jersey
- 9 SLAC National Accelerator Laboratory**
Menlo Park, California
- 10 Thomas Jefferson National Accelerator Facility**
Newport News, Virginia

Other DOE Laboratories

- 1 Idaho National Laboratory**
Idaho Falls, Idaho
- 2 National Energy Technology Laboratory**
Morgantown, West Virginia
Pittsburgh, Pennsylvania
Albany, Oregon
- 3 National Renewable Energy Laboratory**
Golden, Colorado
- 4 Savannah River National Laboratory**
Aiken, South Carolina

NNSA Laboratories

- 1 Lawrence Livermore National Laboratory**
Livermore, California
- 2 Los Alamos National Laboratory**
Los Alamos, New Mexico
- 3 Sandia National Laboratory**
Albuquerque, New Mexico
Livermore, California



Explore other possibilities

Businesses,
communities,
NGOs,
philanthropies,
etc.



National Institutes
of Health



Be
Creative



AGEP
Alliances

The NASA logo, featuring the word "NASA" in white on a blue background with a red swoosh and stars.

NASA



*AGEP National Research
Meeting
Coeur d'Alene, Idaho
May 19-21, 2019*



Jermelina Tupas, PhD
Acting Division Director
Human Resource Development
Directorate for Education and
Human Resources
National Science Foundation

