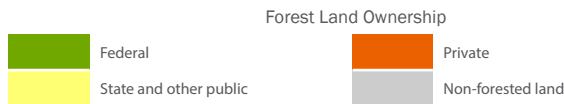
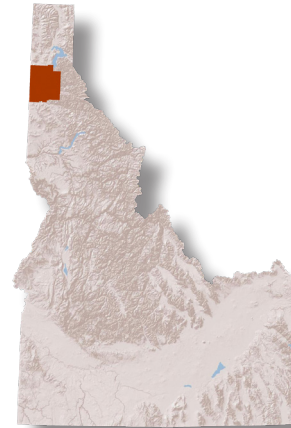
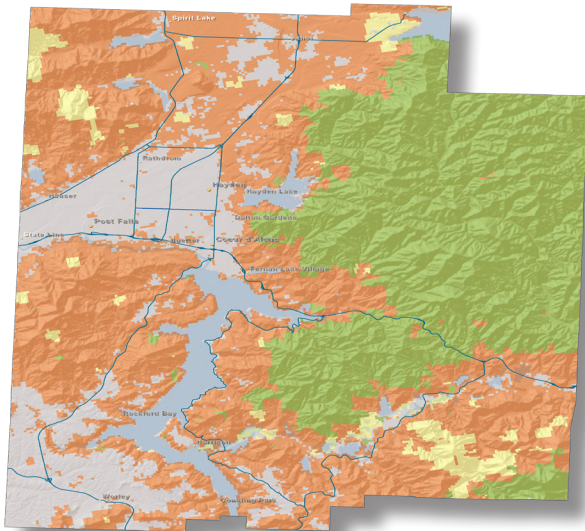
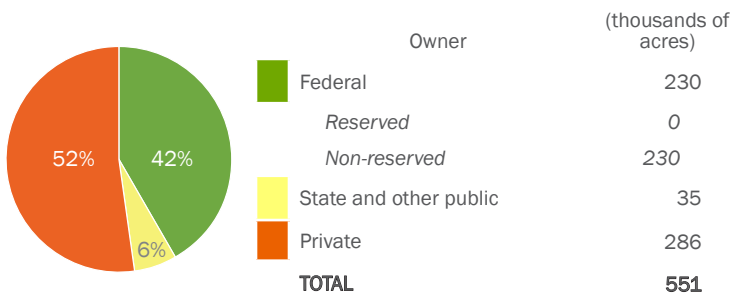


KOOTENAI COUNTY



FOREST LAND OWNERSHIP



LAND AREA

(thousands of acres)

Total land	842
Forest land	551
% of county area	65%

ANNUAL WAGE INCOME, 2016

(thousands of dollars)

Total county wage income	\$2,841,862
Wage income from Forest Products Industry	\$46,105
% of county wage income	2%

GROSS DOMESTIC PRODUCT, 2016

(thousands of dollars)

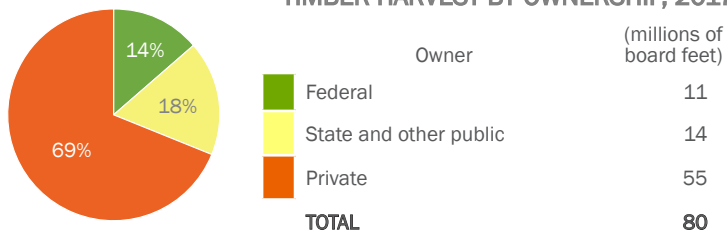
Total county GDP	\$5,555,272
GDP from Forest Products Industry	\$90,126
% of county GDP	2%

JOBS, 2016

(direct employment)

Total jobs in county	65,418
Forest Products Industry jobs	817
% of county employment	1%

TIMBER HARVEST BY OWNERSHIP, 2017



FOREST PRODUCTS INDUSTRY ESTABLISHMENTS, 2016

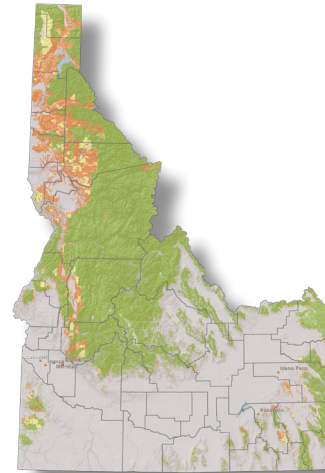
Timber Tract Operators, Logging, and Support	52
Sawmills, Millwork, Treating	16
Engineered Wood and Panel Products	3
Other Wood Products	12
Pulp, Paper, and Paperboard Mills	0
Converted Paper Products	0
TOTAL	83

- Maps of forest land and ownership locations were modeled using sample inventory and geographic information system (GIS) data and may not reflect exact locations of forest cover or ownership.
- Reserved forest land has been permanently reserved from timber harvesting through federal statute or administrative designation (e.g., wilderness).
- See Appendix to *Idaho Forest Factbook* for data sources and methods, available at: www.uidaho.edu/cnr/county_forest_factbook.

IDAHO'S FORESTS AND FOREST PRODUCTS INDUSTRY

Forests contribute to Idaho's beauty, ecology, economy, and culture. Among the many benefits of forests are the raw material—timber—they provide to the forest products industry that manufactures lumber, plywood, paper, and other wood products. Over 85% of forest products manufactured in Idaho are exported out of state, bringing money into Idaho's economy.

Idaho's forest lands and its forest products industry are located primarily in the northern part of the state. Consequently, the importance of the forest products industry to the economy varies widely by county.



LAND AREA

(millions of acres)

Total land	53.5
Forest land	21.7
% of county area	41%

ANNUAL WAGE INCOME, 2016

(millions of dollars)

Total county wage income	\$35,457
Wage income from Forest Products Industry	\$605
% of county wage income	2%

GROSS DOMESTIC PRODUCT, 2016

(millions of dollars)

Total GDP	\$69,311
GDP from Forest Products Industry	\$1,183
% of GDP	2%

JOBS, 2016

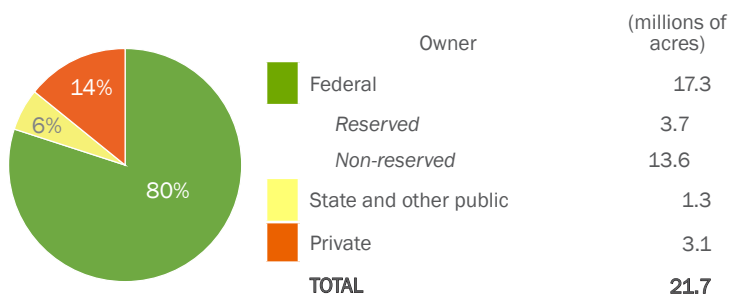
(direct employment)

Total jobs in state	772,118
Forest Products Industry jobs	10,441
% of state employment	1%

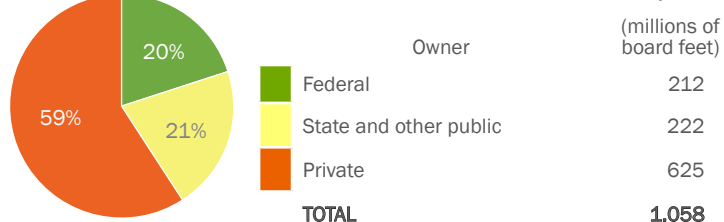
FOREST PRODUCTS INDUSTRY ESTABLISHMENTS, 2016

Timber Tract Operators, Logging, and Support	351
Sawmills, Millwork, Treating	98
Engineered Wood and Panel Products	27
Other Wood Products	90
Pulp, Paper, and Paperboard Mills	5
Converted Paper Products	15
TOTAL	586

FOREST LAND OWNERSHIP



TIMBER HARVEST BY OWNERSHIP, 2017



- Maps of forest land and ownership locations were modeled using sample inventory and geographic information system (GIS) data and may not reflect exact locations of forest cover or ownership.
- Reserved forest land has been permanently reserved from timber harvesting through federal statute or administrative designation (e.g., wilderness).
- See Appendix to *Idaho Forest Factbook* for data sources and methods, available at: www.uidaho.edu/cnr/county_forest_factbook.