



Gooding County Forest Inventory Stocks



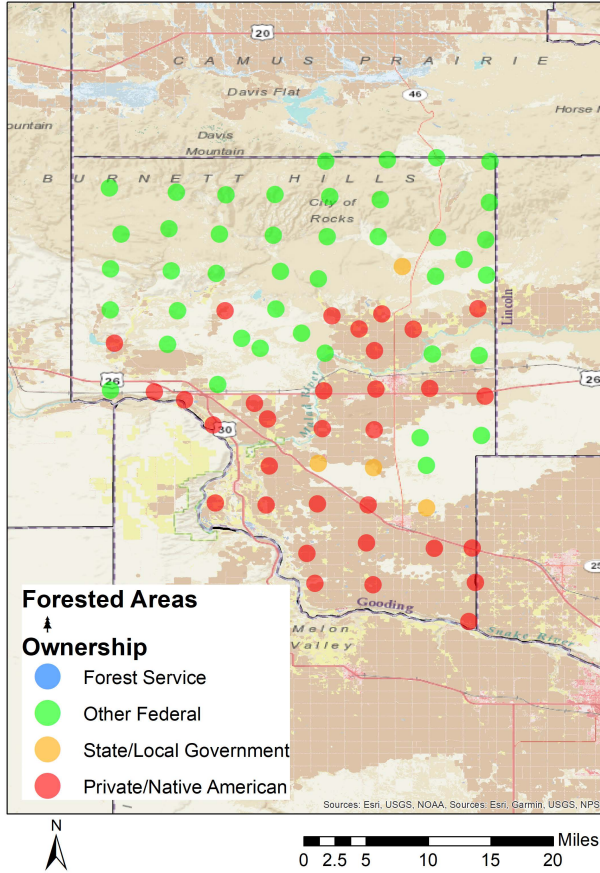
University of Idaho
Policy Analysis Group

Land Base Overview

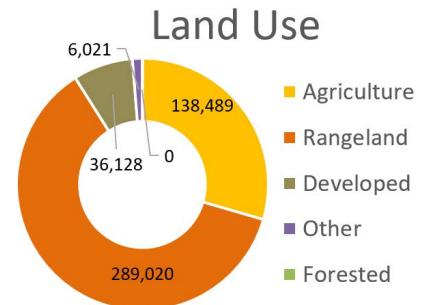
The Forest Inventory and Analysis (FIA) program administered by the USDA Forest Service serves as our national forest inventory. In Idaho, each plot represents roughly 6,000 acres and is revisited on a 10-year cycle beginning in 2004. The data collected provides valuable information on forest extent and stocks as well as how those stocks change over time. This fact sheet details the FIA data for Gooding County, Idaho.

Area Sq Miles	Forested Acres	% Forested	Total Acres
734	0	0.0%	469,658

Gooding County does not have any of its land base classified as forest. Federal land dominates the northern parts of the county while the private land is concentrated mostly in the south.



Distribution of 78 Idaho USDA Forest Inventory and Analysis Plots by land ownership



Area and Volume by Forest Type and Owner

No inventory plots exist on forest land in Gooding County.