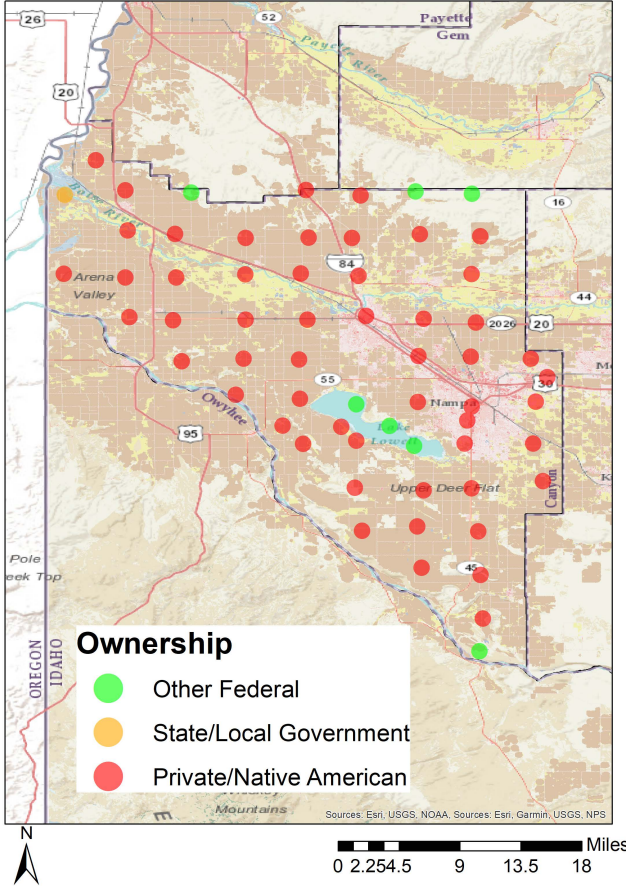




Canyon County Forest Inventory Stocks



University of Idaho
Policy Analysis Group



Distribution of 62 Idaho USDA Forest Inventory and Analysis Plots by land ownership

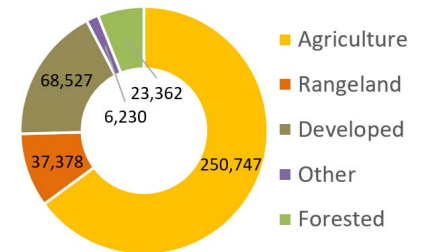
Land Base Overview

The Forest Inventory and Analysis (FIA) program administered by the USDA Forest Service serves as our national forest inventory. In Idaho, each plot represents roughly 6,000 acres and is revisited on a 10-year cycle beginning in 2004. The data collected provides valuable information on forest extent and stocks as well as how those stocks change over time. This fact sheet details the FIA data for Canyon County, Idaho.

Area Sq Miles	Forested Acres	% Forested	Total Acres
604	23,362	6.0%	386,244

Canyon County is not highly forested with just over 20,000 acres (6%) of its land base classified as forest. Private lands dominate most of the county.

Land Use



Area and Volume by Forest Type and Owner

No inventory plots exist on forest land in Canyon County.