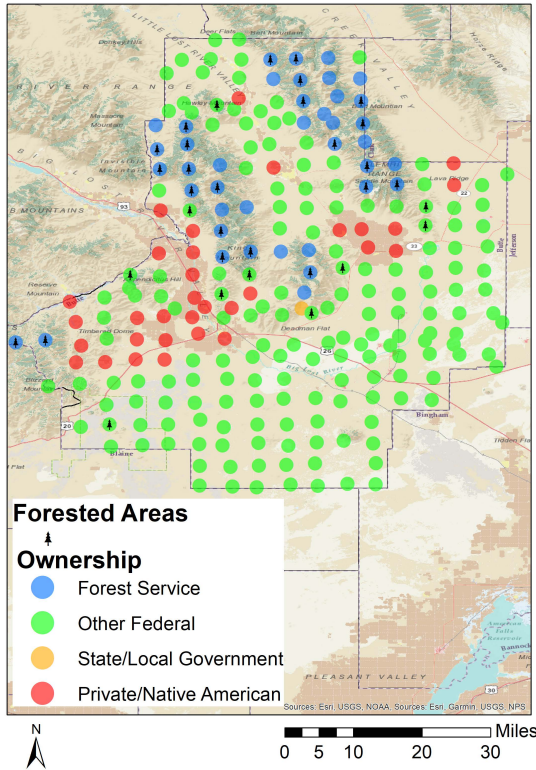




Butte County Forest Inventory Stocks



University of Idaho
Policy Analysis Group

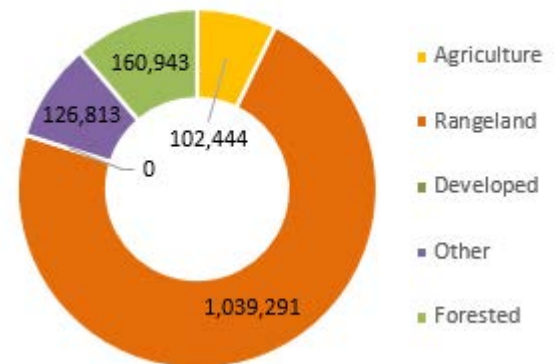


Land Base Overview

Area Sq Miles	Forested Acres	% Forested	Total Acres
2,234	160,943	11.3%	1,429,491

Idaho is a highly forested state. There is a variety of land uses, owners, and different types of forest in each county. The level of carbon intake is dependent on the disturbances that occur and the forest size.

Land Use



Distribution of 4102 Idaho USDA Forest Inventory and Analysis Plots by land ownership

Area and Volume by Forest Type and Owner

	thousand acres					million cubic feet				
	BLM	Ofederal	Private	State	USFS	BLM	Ofederal	Private	State	USFS
Hardwood Forest Types										
Aspen	17	0	56	13	285	14	0	22	29	196
Other Hardwood	185	6	386	96	2,199	88	0	242	38	302
Softwood Forest Types										
Douglas-fir	214	6	667	212	4,724	394	36	1,570	471	10,686
Juniper	76	0	111	16	76	34	0	62	4	32
Ponderosa Pine	36	0	367	134	1,251	88	0	554	269	2,932
Lodgepole Pine	5	47	18	6	1,715	0	49	25	10	2,016
Other Softwood	362	40	1,372	781	6,033	517	169	2,344	1,739	19,451
Total	894	99	2,977	1,258	16,285	1,134	254	4,818	2,561	35,616



Butte County Forest Inventory Change



University of Idaho
Policy Analysis Group

Forest Carbon

Forests are a significant part of the global carbon cycle. The productivity class classifies how much a forest grows every year. This affects how much carbon a forest can intake.

Disturbance

Disturbances affect the forest growth. There are many different types of disturbances and human management is a form of disturbance. Disease is very common in Northern Idaho and becoming a bigger problem as it infects more trees.