



Forest Inventory Change

Forest Carbon

Forests are a significant part of the global carbon cycle. The productivity class classifies how much a forest grows every year. This affects how much carbon a forest can intake.

Forest Productivity Class

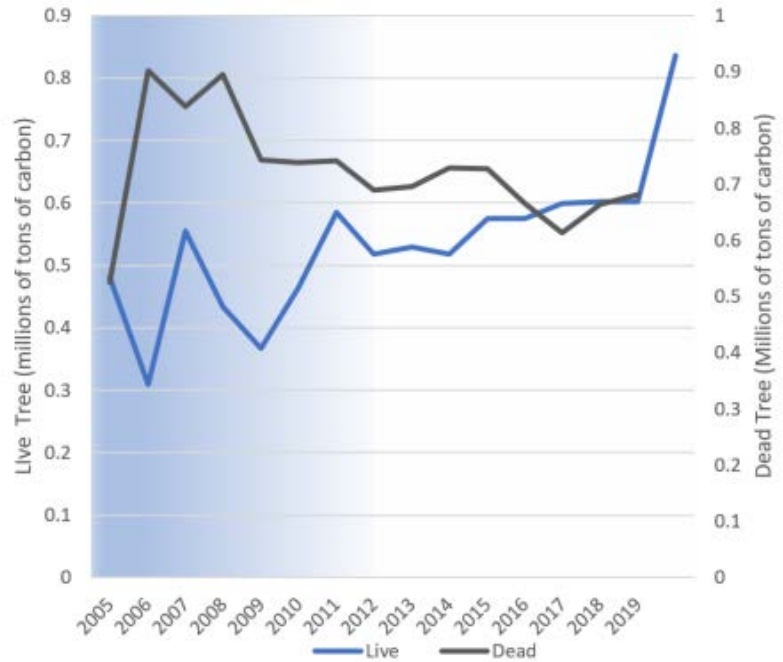
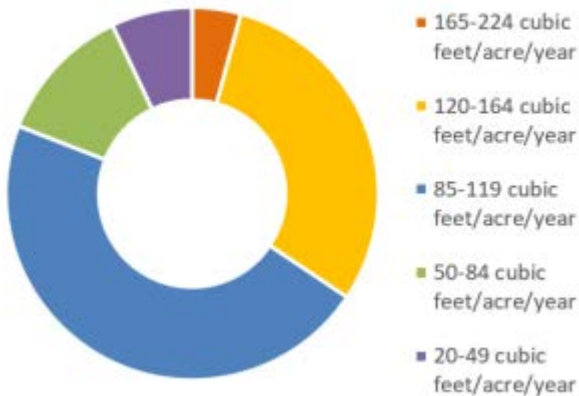
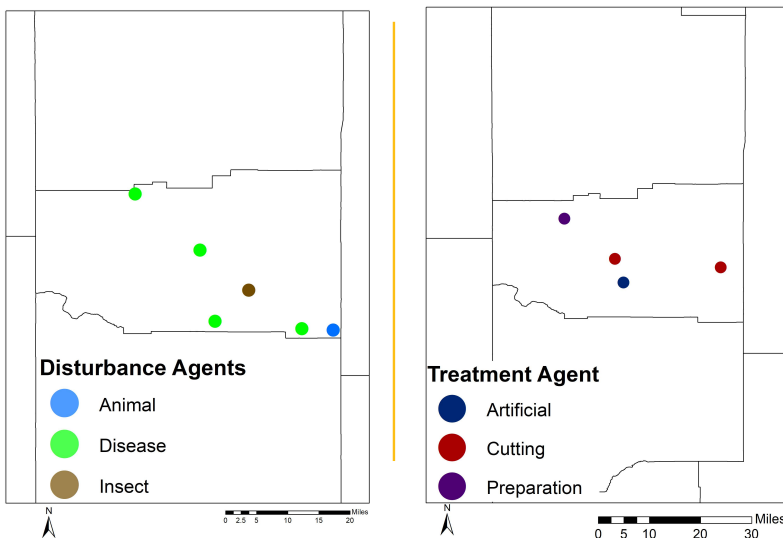


Table of change would go here

Disturbance



	Forest Service	Other Federal	State/Local	Private/Native American	Total
----- acres -----					
Disturbance					
Disease	6,763	0	3,381	7,374	17,518
Fire	0	0	0	1,691	1,691
Insect	0	0	0	0	0
Other Disturbance	0	0	0	0	0
Total	6,763	0	3,381	9,065	19,209
Management					
Artificial	0	0	1,691	1,420	3,111
Cutting	0	0	2,525	7,241	9,766
Other Treatment	0	0	0	0	0
Preparation	0	0	1,127	2,265	3,393
Total	0	0	5,343	10,927	16,269
Grand Total	6,763	0	8,724	19,991	35,478

Disturbances affect the forest growth. There are many different types of disturbances, and human management is a form of disturbance. Disease is very common in Northern Idaho, and becoming a bigger problem as it infects more trees.