

Owyhee County 4-H Cloverbud



Beekeeping Activity Book



Name _____

Age _____ Year in 4-H _____ 20 _____

Club Name _____

Member's Signature _____

Parent/Guardian's Signature _____

Leader's Signature _____

Projects or activities I worked on this year were: _____

I attended _____ club meetings.

I helped the community by: _____

I like being in 4-H because: _____

This year I learned how to: _____

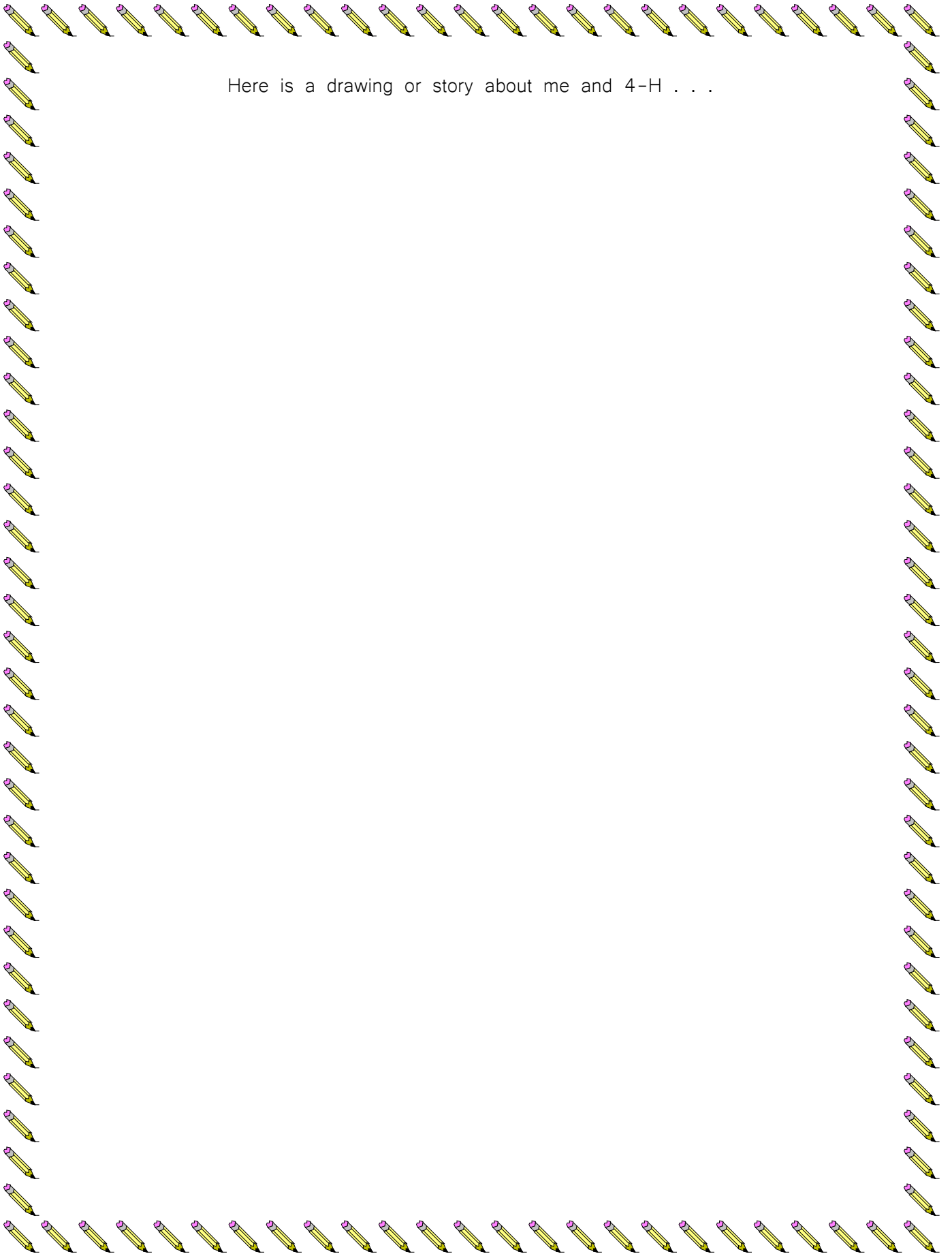
This year I showed others how to: _____





Here are some pictures of me and things I did in 4-H this year . . .





Here is a drawing or story about me and 4-H . . .

Bees by the Numbers!

The Queen Bee has **1** job — to lay eggs.

Bees have **2** stomachs — one for eating and the other special stomach for storing nectar collected from flowers or water so that they can carry it back to their hive.

Bees have **4** wings (two pair)

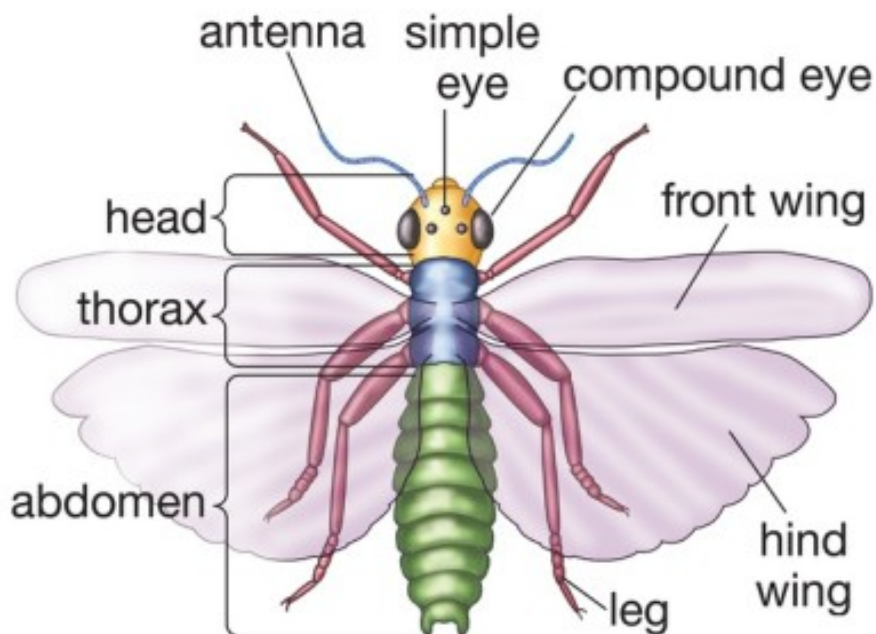
Bees have **5** eyes.

Bees have **6** legs (three pair).

The Queen Bee can lay up to **2,000** eggs each day!

Did you know

- Bees are hairy.
- Beekeepers use smoke to calm bees when they are collecting honey or relocating a hive.
- All worker bees are female. They clean the hive, collect pollen and nectar to feed the colony, and take care of the offspring.
- Only female bees sting.
- All drones are male.
- The wings of a honey bee beat 12,000 beats per minute!
- Bees are the only insect in the world that make food for humans.
- Parts of the bee:



A bee is an insect. Insects have three main body parts: a head (where the eyes are), a thorax and an abdomen. It has three pairs of jointed legs. The bee has "feelers" called antennae, and two pairs of wings. The wings have tiny teeth so they can lock together when the bee is flying.

Draw a line from the name to the body part.



wings

eyes

antennae

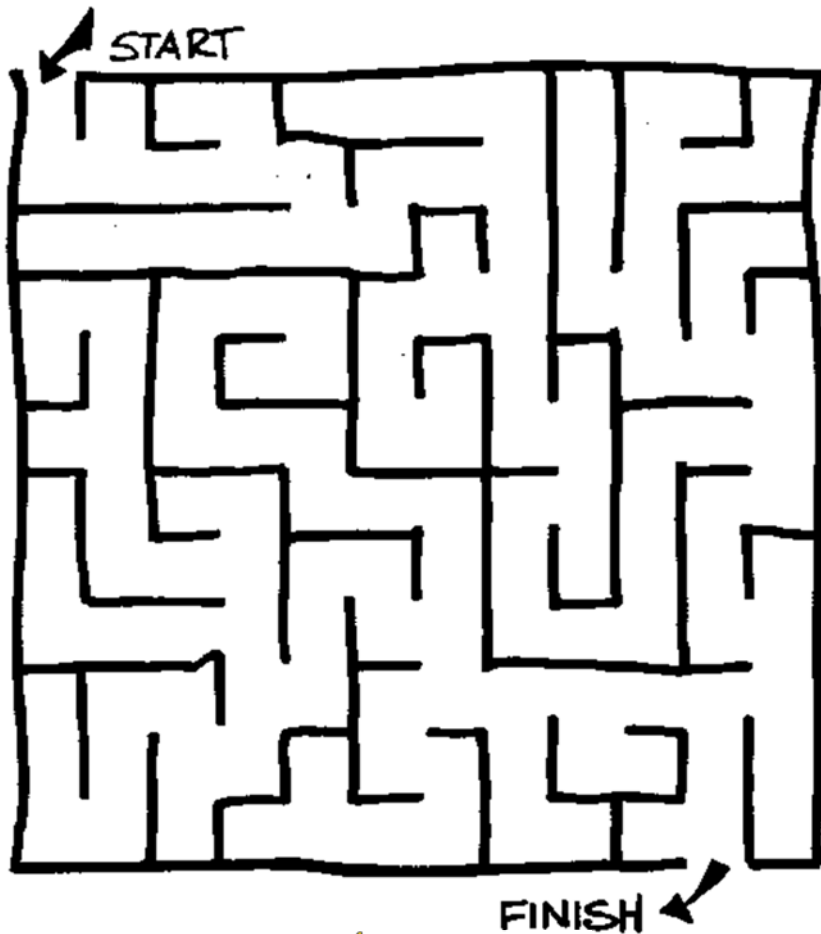
head

legs

abdomen

thorax

Can you help the bee find it's way from the flower to the hive?



Bees from the same hive visit about 225,000 flowers per day! To get an idea of how hard the honey bees work, try this fun activity with your family or your club!

You will need:

Four containers the size of one cup or larger.

Two teaspoons or two eyedroppers (of equal size).

- Divide into two teams.
- Give each team one teaspoon or eye dropper.
- Put one cup of water in a container some distance away from each team. This is the “flower”.
- Put one empty container by each line. This is the “hive”.
- Take turns going from your line to the container or “flower”. Fill up the teaspoon or eye dropper, and bring the water and put it in the empty container (the “hive”) by your line.
- Continue until all of the water is gone from the original container (“flower”) and is now in the container (“hive”) by your line.

Learn:

1. How long it takes to travel from the flower to the hive.
2. Who has the most “honey” in their hive.
3. How tired you might be going back and forth to the hive so many times every day to help make honey!





I Pledge

(Right Hand over Heart)



(Arms at Sides)



4-H Pledge

My Head to Clearer Thinking,

My Heart to Greater Loyalty,

My Hands to Larger Service

and My Health to Better Living,

For My Club, My Community, My Country, and My World.



(Right Hand Points to Forehead)



(Arms Slightly Bent Palms Up)

University of Idaho Extension

To enrich education through diversity, the University of Idaho is an equal opportunity/affirmative action employer and educational institution. University of Idaho and US Department of Agriculture cooperating

Would you like to learn more about all the 4-H projects and activities in Owyhee County?

Contact us at:
208-896-4104 ♦ owyhee@uidaho.edu
www.owyheecounty.net