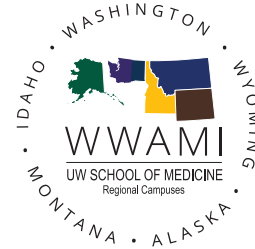


# WWAMI 2020-2021

uidaho.edu/wwami



University of Idaho  
WWAMI Medical Education

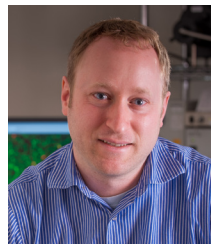
## LEADERSHIP



**Jeff Seegmiller**  
Director



**Russell Baker**  
Associate Director of Medical Research



**Peter Fuerst**  
Associate Director of Curriculum



**Rayme Geidl**  
Associate Director



**Joshua Johnson**  
Anatomy Lab Manager



**Lindsay Lodis**  
Marketing and Communication Manager



**Brad Martin**  
Director of Development



**Marlane Martonick**  
Program Manager



**Dustin Worth**  
Clinical Medicine Coordinator

## CLINICAL FACULTY



**Onesmo Balemba**  
Histology



**Lane Brown**  
Nervous System



**Tyler Bland**  
Pharmacology



**Jacques Bouchard**  
Clinical Faculty



**Bill Caldwell**  
Clinical Faculty



**Summer Day**  
Clinical Faculty



**Rick Emtman**  
Clinical Faculty



**Lynda Freeman**  
Academic Specialist



**Lee Fortunato**  
Biochemistry



**Scott Grieshaber**  
Microbiology and Infectious Disease



**George Hodges**  
Clinical Faculty



**Donna Holmes**  
Gerontology



**Jon Mallatt**  
Histology



**Scott Minnich**  
Microbiology and Infectious Disease



**Diana Mitchell**  
Immunology



**David Pfeiffer**  
Anatomy



**Paul Rowley**  
Biochemistry



**Belinda Sanchez**  
Anatomy



**Angela Scharnhorst**  
Clinical Faculty



**Kassie Tricola**  
Clinical Faculty



**Chantal Vella**  
Health Disparities



**Danae Vu**  
Clinical Faculty



**Charla Willis**  
Clinical Faculty

## ADMINISTRATIVE SUPPORT



**Irene Jones**  
Technology Specialist



**Dawna MacFarlane**  
Administrative Coordinator



**Stephanie Neal**  
Financial Specialist



**Diane Prorak**  
Librarian



**Molly Steiner**  
Grants and Contracts Specialist



**Whitney Vincent**  
Program Specialist

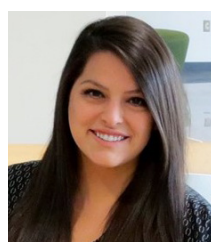
## RESEARCH AND OUTREACH PROGRAMS



**Kayla Blades**  
ECHO Idaho Program Coordinator



**Liz Bryant**  
North Idaho AHEC Director



**Maddie Casanova**  
Post-Doctoral Fellow



**Karley Kline**  
ECHO Idaho Program Coordinator



**Megan Nelson**  
Post-Doctoral Fellow



**Katy Palmer**  
ECHO Idaho Assistant Director



**Lachelle Smith**  
ECHO Idaho Director



**Sam Steffen**  
ECHO Idaho Program Coordinator



**Jessica Whitlock**  
ECHO Idaho Program Coordinator

“ I believe **we are the medical school** for the state of Idaho.

**This involves doing what medical schools do:**

— State of the art medical education, **Research** that improves patient care and **educational programming** that brings rural Idaho physicians and other **healthcare providers together.**”

**Dr. Seegmiller**  
became Director in August of 2014