



STAT Training and Quality Improvement Cohort Protocol

University of Idaho

Please Note: Refer to this document if you are a PCP participating in the yearlong STAT training and seeking Quality Improvement (QI) credits as Maintenance of Certification Part IV Credit / AAPA Category 1 PI-CME. Participation in the QI Cohort is strongly encouraged but not required.

If you want to participate in the yearlong STAT training only (without earning the QI credits), please refer to [this document](#) for more information.

Beginning Date

March 5, 2024

End date

April 30, 2025

Project Leaders

Amy Francis, MD, Developmental Behavioral Pediatrician, Medical Director, St. Luke's Children's Developmental and Behavioral Pediatric, Boise, ID

Elena Harlan Drewel, PhD, Pediatric Neuropsychologist, St. Luke's Children's Hospital, Meridian, ID

Thomas Patterson, MD, Pediatrician, Full Circle Health, Meridian, ID

Clinical Gap

Currently, children wait up about 2.5 years to be evaluated for autism in Idaho, which exceeds the national average of 1-2 years. This quality improvement effort seeks to increase the use of 2nd Tier screens (e.g. SRS) for those with a positive autism screening at 18- and 24-month well child visits, and train providers how to employ the Screening Tool for Autism in Toddlers and Young Children (STAT) tool for Level 3 autism diagnosis.

Initiative Overview

ECHO Idaho Autism is an innovative approach to mentoring primary care providers to improve their self-efficacy with identifying symptoms of autism in children under the age of 4 years as well as increase self-efficacy related to screening and management of common medical and psychiatric comorbidities in children with autism.

ECHO Idaho Autism utilizes a hub-and-spoke framework to build a community of practice through multipoint video conferencing and case-based learning. The curriculum is founded on other national initiatives such as Learn the Signs, Act Early (CDC) and resources from the Autism Intervention Research for Physical Health (HRSA).

AIM 1: Increase or sustain participating PCPs' percentage of 2nd-tier screens for patients with a positive autism screening at 18- and 24-month-old visits.

AIM 2: Increase participants perception of knowledge or self-efficacy of using the Screening Tool for Autism in Toddlers and Young Children (STAT) tool and clinical observation to make diagnostic determination of children 48 months or younger.

AIM 3: Increase participants perception of knowledge or self-efficacy of screening and management of common medical and psychiatric comorbidities in children with autism by completion of 12 months of ECHO Idaho Autism participation.

Free Maintenance of Certification (MOC) Part IV Credits and Continuing Education

The University of Idaho Office of Continuing Education is an approved [Portfolio Sponsor](#) through the American Board of Medical Specialties, which serves as a single-point system for 18 different medical specialty boards. Each medical board requires and certifies MOC activities for different amounts of credits. Please see the [Portfolio Program Credit Translation handout](#) to see a list of all participating accreditation board and understand how participating in a Portfolio program-sponsored activity translates to for your accreditation board.

In support of improving patient care, University of Idaho, WWAMI Medical Education Program is jointly accredited by the Accreditation Council for Continuing Medical Education (ACCME), the Accreditation Council for Pharmacy Education (ACPE), and the American Nurses Credentialing Center (ANCC), to provide continuing education for the healthcare team.

All participation in live or asynchronous material will be available for free continuing education credit. You can learn more about credit types and offerings on the [ECHO Idaho website](#).

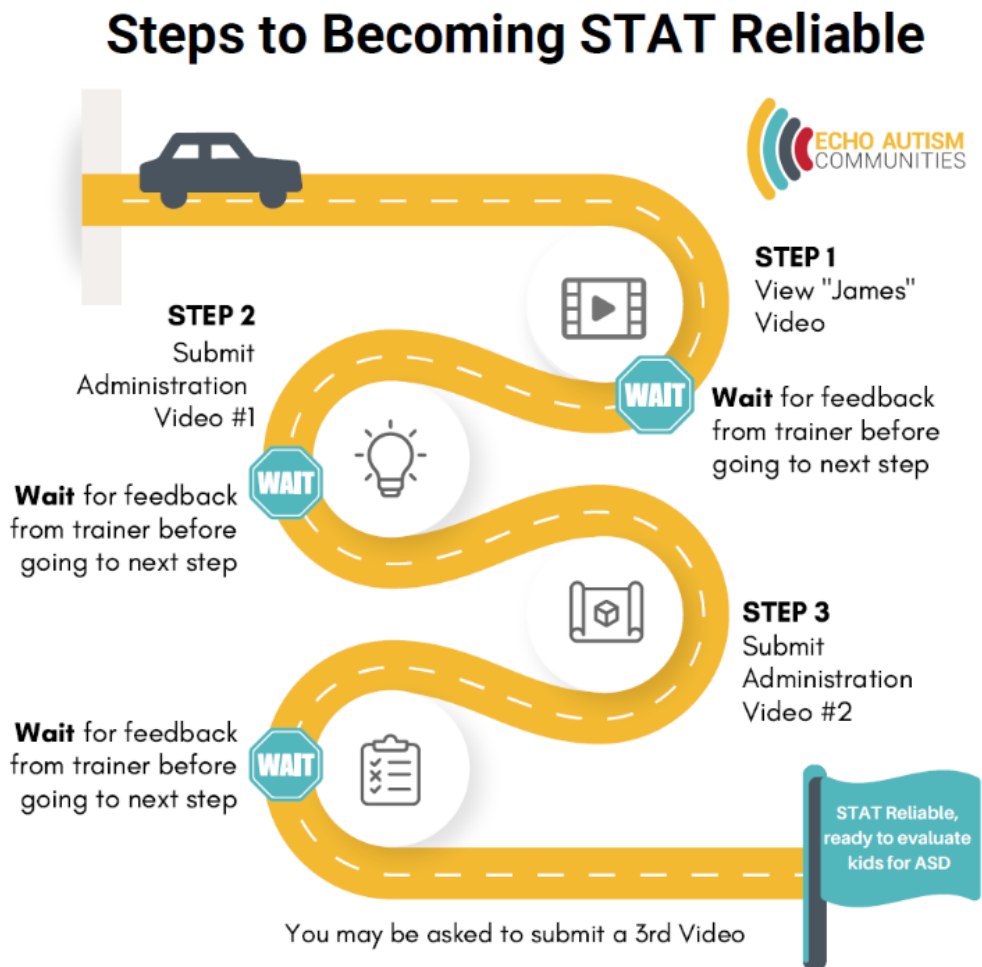
Requirements for Meaningful Participation

Meaningful participation is crucial to the success of the quality improvement project and will be certified by the project leader and program staff. Minimum requirements of meaningful participation are outlined in Table 2 and include:

- Complete [Screening Tool for Autism in Toddlers and Young Children \(STAT\)](#) certification
 - Join 2-day training (March 5-6, 2024)
 - Complete steps to attain certification (see on page 3)
- Participation in a 1-hour meeting with the Kick-off Quality Improvement Cohort on 4/4/2024 that will review pediatric and developmental screening tools and an overview of the Quality Improvement Cohort process (including chart review requirements).
- Participation in three of four, live 30-minute ECHO Idaho Autism Quality Improvement cohort meetings.
- Submit at least four retrospective chart reviews and submit data to program staff through an online form.
 - Participants will be required to report the following on each chart review:
 - Number of 18- and 24-month-olds with positive autism screening (using MCHAT/R-F or SWYC-POSI) in the previous 30 days
 - Number of these patients who were offered a 2nd-Tier screen (e.g. SRS)
 - [Click here](#) to download a copy of the chart review form.
 - Each 30-minute meeting will include a review of each participants' chart reviews demonstrating use of autism screeners during 18- and 24- month visits and appropriate referrals. Additionally, participants will be able to consult project leaders about using screening tools, managing comorbidities or symptoms, and referrals.
- Present at least one patient case at a regular ECHO session between April 2024 and March 2025 after becoming STAT reliable.
- Participation in 16 of 22 ECHO Idaho Autism sessions.
 - Participants are encouraged to attend live sessions but may view up to 2 asynchronous recorded sessions (email echoidaho@uidaho.edu for session links if needed).
 - Participants must sign into the event and complete the post-session feedback survey to receive credit for attendance and participation.
- Completion of pre- and post- series surveys.

STAT Certification Process:

See below for a visual describing the steps to attain [STAT](#) certification (establishing reliability takes ~ 6 months):



Disputes Regarding Physician or PA Meaningful Participation

Disputes arising from missing or incomplete attestations will be put through a formal review process with a group consisting of program staff from ECHO Idaho, the Idaho WWAMI Office of Continuing Education, and clinical advisor (i.e., Dr. Francis, Dr. Harlen Drewel or Dr. Patterson) to determine remedial actions the physician, PA or NP must take to receive credit for participation in this QI/performance improvement activity.

Table 1. Calendar and Timeline

Date of Educational Activity	Activity
3/5/2024 (all day) – 3/6/2024 (all day) (REQUIRED)	STAT Training (in-person in Boise)
4/4/2024 (REQUIRED)	STAT and QI Cohort Kick-off Meeting: 1 – 2 p.m. MT <ul style="list-style-type: none"> • Review of 2nd Tier Pediatric Autism Screening Tools • Review ECHO Idaho Autism Quality Improvement Cohort Expectations • Discuss expectations and process for chart review data pull/submission

Date of Educational Activity	ECHO Idaho Autism Session Didactic Topic 12:30-2 p.m. MT (unless noted otherwise) 16 of 22 live or asynchronous sessions are required	Quality Improvement Cohort Meeting 1:30 – 2 p.m. MT 3 of 4 live meetings are required
4/11/2024	TBD	-
4/25/2024	TBD	-
5/16/2024	TBD	-
5/30/2024	TBD	-
6/13/2024	TBD	Meeting 1: Discuss results from first and second retrospective chart review data pull (1:30-2 p.m. MT)
6/27/2024	TBD	-
7/11/2024	TBD	-
7/25/2024	TBD	-
8/8/2024	TBD	-
8/22/2024	TBD	-
9/12/2024	TBD	Meeting 2: Discuss results from third retrospective chart review data pull (1:30-2 p.m. MT)-
9/26/2024	TBD	-
10/10/2024	TBD	-
10/24/2024	TBD	-
11/14/2024	TBD	Meeting 3: Discuss results from fourth retrospective chart review data pull (1:30-2 p.m. MT)
11/28/2024	No Session	
12/12/2024	TBD	-
12/26/2024	No Session	
1/9/2025	TBD	-
1/23/2025	TBD	-
2/13/2025	TBD	-
2/27/2025	TBD	Meeting 4: Discuss results from fifth retrospective chart review data pull (1:30-2 p.m. MT)
3/13/2025	TBD	
3/27/2025	TBD	-
4/30/2025	End of Quality Improvement Project Cohort	

Table 2. Meaningful Participation Measures

Measure Name	Frequency	Tool	Verified By
Pre-Series Survey	Once at the start of participation; no later than 3/4/2024.	15-minute online survey	Program Staff*
STAT Certification <ul style="list-style-type: none"> Join 2-day training Submit “James video” review Submit administration video #1 Submit practice administration video #2 Video #3 (if needed) 	<ul style="list-style-type: none"> 2-day training: March 5-6, 2024 “James video”: due by 3/31/2024 Video #1: due by 5/12/2024 Video #2: due by 6/30/2024 (If needed) Video #3: No due date set 	Training provided by ECHO Idaho	Program Staff*
Participation in Live Kick-off Meeting <ul style="list-style-type: none"> Review of 2nd-Tier Autism Screening Tools Review of ECHO Cohort Expectations 	4/4/2024 from 1 – 2 p.m. MT; live participation is required by all participants.	Attendance and participation tracked via online continuing education software, Eeds.	Program Staff*
Chart Review <ul style="list-style-type: none"> 2nd-Tier screener completion for last 30 days 	At least 4 times (4/12/2024 following the Kick-Off meeting and by 5 a.m. MT the day-of QI Meetings).	Chart Review / Electronic Health Records Participant to submit data points to online survey tool	Program Staff*
Participation in Live ECHO Autism QI Cohort Meetings	Must attend at least 3 of 4 ECHO Idaho Autism QI Cohort Meetings (1:30-2:00 p.m. MT)	Attendance and participation tracked via online continuing education software, Eeds.	Program Staff*
Participation in ECHO Idaho Autism Sessions	Must attend at least 16 of 22 ECHO Idaho Autism sessions (second and fourth Thursdays, 12:30 – 2:00 p.m. MT, unless otherwise noted)	Attendance and participation tracked via online continuing education software, Eeds. Completion of post-session feedback survey.	Program Staff*
Present at least one patient case at a regular ECHO session between April 2024 and March 2025.	After becoming STAT reliable, participants submit/present a “Diagnostic” case.	Submit patient case form and present during ECHO Autism session.	Program Staff*
Post-Series Survey	Once after final live ECHO session on 3/27/25; no later than 4/30/2025.	15-minute online survey Please note that the post-series survey opens following the 4/21/2025 session and you will receive an email.	Program Staff*

*ECHO program staff will compile data and present to Program Leads for final verification of participation and credit.

