

STEM Science Technology Engineering Math can get you there!

Don't Regret

Get Started With A STEM Career Today:

Requiring an associate's degree (2yr.) or less

- Energy Systems Technology
- Electrical Engineering Technician
- Web Developer/SEO
- Licensed Practical Nurse
- Document Control Specialist
- Surgical Technician
- Computer Programming
- Manufacturing Technician
- Chemical Technician
- AND MANY MORE

Requiring a bachelor's degree (4yr.) or more

- Software Engineer
- Nuclear Engineer
- Business Analyst
- Medical Scientist
- Biochemists/Biophysicists
- Occupational Therapists
- Data Architect
- AND MANY MORE

Contact a Local College NOW!



208.524.3000 x 3344



208.282.7900



208.282.2622

designed by Kathy Miller • www.p4peid.org

“STEM jobs lead to careers that pay a living wage”

Average Hourly Earnings of Full-time Private Wage and Salary Workers in STEM Occupations by Educational Attainment, 2010

	Average hourly earnings		Difference	
	STEM	Non-STEM	Dollars	Percent
Some college or associate degree	\$26.63	\$19.02	\$7.61	40.0%
Bachelor's degree only	\$35.81	\$28.27	\$7.54	26.7%
Graduate degree	\$40.69	\$36.22	\$4.47	12.3%

Source: ESA calculations using Current Population Survey public-use microdata and estimates from the Employment Projections Program of the Bureau of Labor Statistics.

15,519
Idaho STEM
job openings
in 2013.

In 2018
92%
of all STEM jobs
will require
education after
high school.

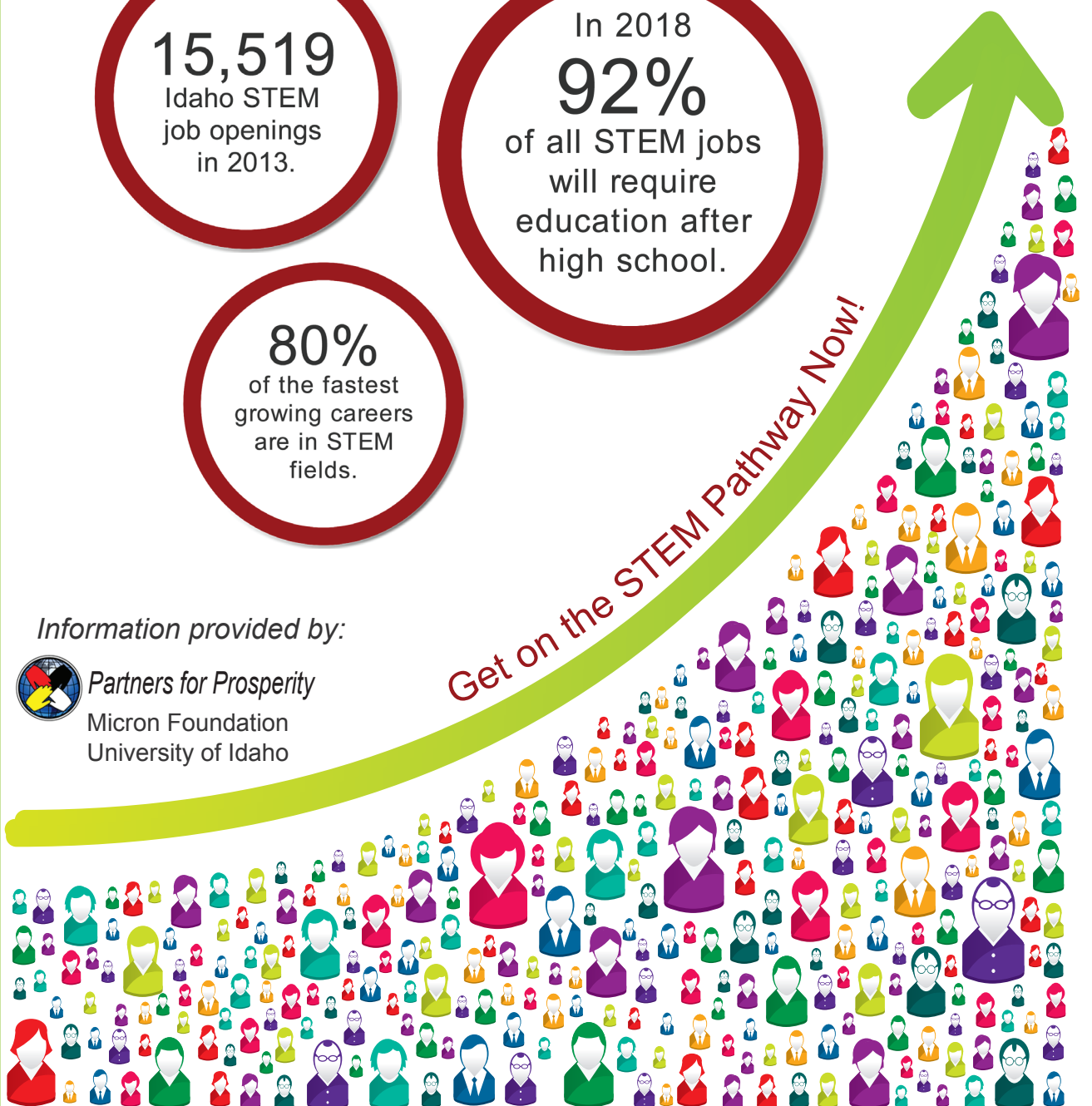
80%
of the fastest
growing careers
are in STEM
fields.

Get on the STEM Pathway Now!

Information provided by:



Partners for Prosperity
Micron Foundation
University of Idaho





College

**Preparing For Your Future After
High School in Eastern Idaho**



Partners for Prosperity

University
of Idaho



Partners for Prosperity
NEW BEGINNINGS FOR EASTERN IDAHO

Dear Students and Parents,

Preparing for college can be a daunting and confusing task. You will be faced with many decisions including where to attend and how to pay for your education. In addition, you will need to think about your field of study and the type of degree you want to pursue. Let's face it, the goal of ALL college students is to get a job or better yet—have a meaningful career that pays well.

The information contained in this packet is meant to help you with some of those decisions. We have compiled information about applying for college, how to obtain financial aid, and general information about the public colleges and universities in eastern Idaho. In addition, we have included information to help you understand some of the terms used in education, including the types of degrees and financial aid. We've also included information about STEM (science, technology, engineering and math) career pathways which are high growth, high demand career options.

Partners for Prosperity is a nonprofit organization dedicated to poverty reduction by helping people build assets. We believe that education is critical regardless of the type of education you choose—credential, certificate, 2-year degree, 4-year degree or advanced degree. We sincerely hope you take a moment to read through this information to learn more about your options. We have included contact numbers and websites where you can find additional information.

We wish you all the best in your future education and career!

Partners for Prosperity



Glossary of College and Financial Aid Terms and Acronyms

AA/AS/AAS: Associate of Arts degree; Associate of Science degree; Associate of Applied Science degree; typically 2 year degree.

Award Letter: A letter sent to the student by the institution indicating the type and amount of student financial assistance/aid the student is eligible to receive.

BA/BS: Bachelor of Arts degree or Bachelor of Science degree, typically 4 year degree.

Direct Loan: A subsidized and unsubsidized federal loan program administered by the U.S. Department of Education. Direct Loans have similar terms to Federal Stafford Loans, and Stafford Loans were no longer made after July 1, 2010.

Direct PLUS loan: A federal loan for parents of dependent undergraduate students and graduate/professional students. Terms are similar to the Federal Grad PLUS loans that were no longer originated after July 1, 2010.

Enrollment Status: The designation of a student as being enrolled full time, half time, or less than half time by the institution, which can affect a student's eligibility for financial assistance/aid.

Entrance Counseling: Before a school delivers federal student loan proceeds, students are required by federal regulation to complete an entrance counseling session.

FAFSA: Free Application for Federal Student Aid, the standard form students must complete to apply for federal and state need-based assistance/aid programs and, in some circumstances, campus-based assistance/aid.

Federal Direct Loan Program (DL): A federal program through which the U.S. Department of Education offers four types of student loans: subsidized Direct Loans, unsubsidized Direct Loans, Direct PLUS Loans for parents of dependent undergraduate students and graduate/professional students, and Direct Consolidation Loans.

Federal Work-Study (FWS): A campus-based Title IV employment program where students work part time in campus departments and programs as part of their total financial aid package.

Free Application for Federal Student Aid (FAFSA): The standard form students must complete to apply for federal and state need-based assistance/aid programs and, in some circumstances, campus-based assistance/aid, including scholarships.

Grant: Financial assistance or student aid that generally speaking does not have to be repaid.

Scholarship: Financial assistance/aid that is usually based on merit or ability, and that does not have to be repaid.

TRIO: Special programs for students from lower income backgrounds and students who will be the first generation in their family to attend college. Programs include Educational Opportunity Centers, Talent Search, Upward Bound, and Student Support Services.



Question: How do I apply for college?

Answer: In most cases, go online and complete the application. The following is a table showing the web links and other important information.

Public Colleges and Universities in Idaho

Name of School	Location	Web Address to Apply	Application Cost	Contact with Questions
Idaho State University	Pocatello	http://www.isu.edu/apply	\$50	Admissions: 208-282-2475 admiss@isu.edu
Idaho State University College of Technology	Pocatello	http://www.isu.edu/ctech/	\$50	Student Services: 208-282-2622 ctech@isu.edu
North Idaho College	Coeur D'Alene	http://www.nic.edu/admissions/	None	Admissions: 208-769-3311 opt. 5
Boise State University	Boise	http://admissions.boisestate.edu/	\$50	Admissions: 208-426-1156 bsuinfo@boisestate.edu
College of Southern Idaho	Twin Falls	http://www.csi.edu/prospectiveStudents_/studentServices/admissions_records/gettingStarted/index.asp	Online: None Paper: \$10	Admissions: 208-732-6795 records@csi.edu
Lewis-Clark State College	Lewiston	http://www.lcsc.edu/admissions/applying-to-lcsc/freshman-students/	\$35	Admissions: 208-792-2210 admissions@lcsc.edu
College of Western Idaho	Nampa	http://cwidaho.cc/future-students/applying-cwi	\$25	One Stop Student Services: 208-562-3000
Eastern Idaho Technical College	Idaho Falls	https://www.applyweb.com/apply/eitcapp/	\$10	Admissions: 208-524-3000 ext. 3390 pamela.levan@my.eitc.edu
University of Idaho	Idaho Falls Moscow	https://vandalweb.uidaho.edu/PROD/bwskalog.P_dispLoginNon	\$50	Admissions: 208-282-7900 futurestudents@uidaho.edu Admissions: 208-885-6326 admissions@uidaho.edu



Paying for Your Education

How do I get financial aid to help to pay for school? What about scholarships?

Federal Financial Aid programs are available to assist you with college expenses if you qualify. In order to qualify, you must first complete the online *Free Application for Federal Student Aid (FAFSA)*.

How to Apply for Financial Aid

STEP 1

Login at https://fafsa.ed.gov/FAFSA/app/fafsa?locale=en_US

Make sure you go to this website. There are imposters and scams that charge money to complete the application, but the true federal FAFSA is completely free!

STEP 2

Follow the online guide to complete the FAFSA application.

STEP 3

[Fafsa.gov](http://fafsa.gov) can interface with the IRS directly to download your financial information (both student and parents). Have your returns handy and if you filed electronically, have your signature pin ready.

STEP 4

Once you have completed the FAFSA, then click “submit”.

*February 15 is priority deadline for most colleges/universities, however, you can still apply anytime.

What Next

The college/university will notify you about the type and amount of financial aid you qualify for based on your FAFSA application. They will contact you prior to the start of the semester.

Scholarship offices oversee a range of scholarships that are funded by the college or university and donors who support them. In order to be considered for these scholarships, you must complete an application.

ISU: <http://www.isu.edu/scholar/index.shtml>

EITC: http://www.eitc.edu/financial_scholarships1.cfm

UI: <http://www.uidaho.edu/financialaid/scholarships>



STEM Science Technology Engineering Math can get you there!

Hired Get

Get Started With A STEM Career Today:

Requiring an associate's degree (2yr.) or less

- Energy Systems Technology
- Electrical Engineering Technician
- Web Developer/SEO
- Licensed Practical Nurse
- Document Control Specialist
- Surgical Technician
- Computer Programming
- Manufacturing Technician
- Chemical Technician
- AND MANY MORE

Requiring a bachelor's degree (4yr.) or more

- Software Engineer
- Nuclear Engineer
- Business Analyst
- Medical Scientist
- Biochemists/Biophysicists
- Occupational Therapists
- Data Architect
- AND MANY MORE

Contact a Local College NOW!



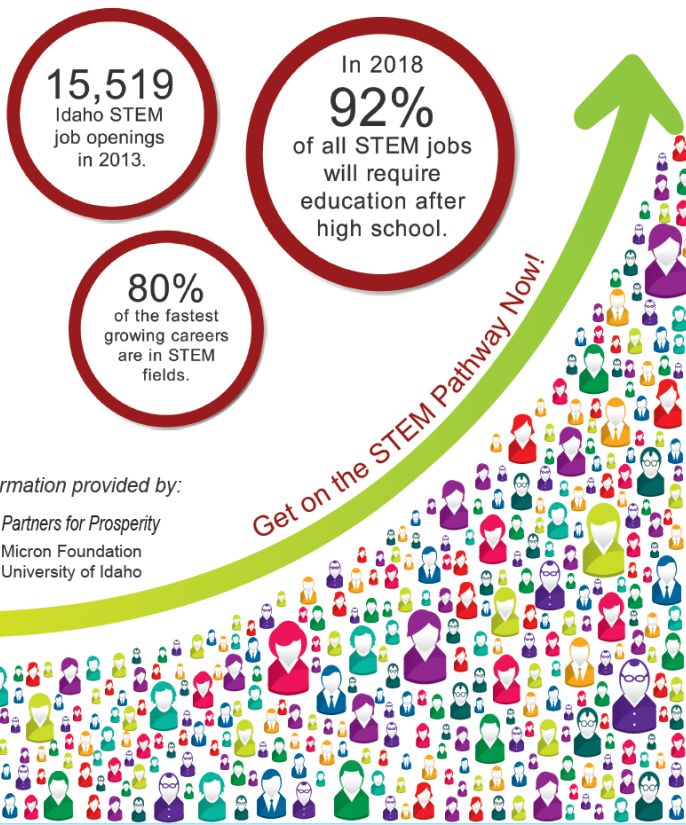
designed by Kathy Miller • www.p4peid.org

“STEM jobs lead to careers that pay a living wage”

Average Hourly Earnings of Full-time Private Wage and Salary Workers in STEM Occupations by Educational Attainment, 2010

	Average hourly earnings		Difference	
	STEM	Non-STEM	Dollars	Percent
Some college or associate degree	\$26.63	\$19.02	\$7.61	40.0%
Bachelor's degree only	\$35.81	\$28.27	\$7.54	26.7%
Graduate degree	\$40.69	\$36.22	\$4.47	12.3%

Source: ESA calculations using Current Population Survey public-use microdata and estimates from the Employment Projections Program of the Bureau of Labor Statistics.



Information provided by:





Idaho State University (ISU) ~ Pocatello ID



Idaho State University, a Carnegie-classified doctoral research high and teaching institution founded in 1901, attracts students from around the world to its Idaho campuses.

At the main campus in Pocatello, and at locations in Meridian, Idaho Falls and Twin Falls, ISU offers access to high-quality education in more than 280

programs. Almost 14,500 students attend ISU, receiving education and training in those programs. Idaho State University is the state's designated lead institution in health professions and medical education.

Idaho State University faculty and students are leading the way in cutting-edge research and innovative solutions in the areas of energy, health professions, nuclear research, teaching, humanities, engineering, performing and visual arts, technology, biological sciences pharmacy and business.

Idaho State University combines exceptional academics amidst the grand natural beauty of the West. ISU is at the heart of an outdoor-lover's paradise and a short drive to some of America's greatest natural wonders and exciting outdoor recreation opportunities.



Website: www.isu.edu

Website to apply: admiss@isu.edu

Application fee: \$50

Questions? 208-282-2475



Idaho State University College of Technology ~ Pocatello ID



The College of Technology provides students with the opportunity to acquire a professional-technical education in a university setting. The college is not only designed to meet the needs of students, but also area business, industry, and community partners.

The mission of the College of Technology is to provide students with technical skills, knowledge and attitudes necessary for successful performance in a highly effective workplace.

Applying to the College of Technology and being admitted into one of our programs is the first step to becoming a Bengal! Don't hesitate to call us with any questions you may have about the admissions process, financial aid, finalizing your class schedule, or where to live on campus.

- Student Population: 2,023
- Number of Programs: 40
- Graduate Job Placement Rate: 91.5%

Website: <http://www.isu.edu/ctech/future-students.shtml>

Website to apply: <http://www.isu.edu/apply/>

Application fee: \$50

Questions?

Our recruiters are here to help you with the transition into becoming a successful student at Idaho State University.

Sherri Horsley, Recruiter
Phone: (208) 530-1005
Email: johnshe7@isu.edu

Corinne McCullough, Recruiter
Phone: (208) 252-2982
Email: mccucori@isu.edu



University of Idaho (UI) ~ Idaho Falls ID



Welcome to the University of Idaho in Idaho Falls. We are located at University Place, right next to the beautiful Snake River.

We provide programs that are designed to meet the educational objectives of traditional and non-traditional students.

We are located near the Idaho National Laboratory (INL), which provides unique research and educational opportunities. Our partnership with Idaho State University (ISU) allows students greater access to courses. We are also home to the Center for Advanced Energy Studies (CAES); a premiere research facility that opened fall 2008.

The University of Idaho in Idaho Falls delivers advanced education and research programs addressing state and national energy needs in partnership with the Idaho National Laboratory, industry and other universities.

Our resources and efforts in southeast Idaho are focused on diverse research-based graduate science, engineering, and technology programs and a limited number of undergraduate degree programs that take advantage of our location in Idaho Falls.

- Student Population: 322
- Undergraduate degrees offered: 3
- Graduate degrees offered: 36
- Certificates offered: 17

Website: <http://www.uidaho.edu/idahofalls>

Website to apply: https://vandalweb.uidaho.edu/PROD/bwskalog.P_dispLoginNon

Application fee: \$50

Questions? Admissions: 208-282-7900 futurestudents@uidaho.edu



Eastern Idaho Technical College ~ Idaho Falls ID



Accredited by numerous organizations, Eastern Idaho Technical College (EITC) offers classes and training in health, business and industrial careers through externships and the most up-to-date technologies.

Located in Idaho Falls, Idaho, EITC offers associate's degrees in Computer Networking, Web Development, Dental Assisting, Registered Nursing and

Automotive Technology, among other fields.

Using the most up-to-date technologies, EITC provides students with training that is current and relevant to their field. Students in certain programs such as Dental Assisting also complete externships, working in their future area of employment and gaining experience with a range of tasks.

For working professionals who wish to enhance their skill-set, EITC also offers single professional development classes. The Counseling and Advising Department at EITC helps students with admissions and financial aid applications. They also provide career, academic and even personal counseling.

Eastern Idaho Technical College usually requires that students have a high school diploma or GED before applying, but waivers to this rule are issued on occasion.

Website: www.eitc.edu

Website to apply: <https://www.applyweb.com/apply/eitcapp/>

Application fee: \$50

Questions? pamela.levan@my.eitc.edu

208-524-3000 ext. 3390



Idaho State University ~ Pocatello ID

~ **START Program** ~

Every Semester

Are you THINKING about going to ISU?

Don't THINK about it any longer, **START!**

ISU has a wonderful *FREE* opportunity for you called the **START** program. If you have a high school diploma, if you are working on your GED or you have already passed the GED, sign up for the **START** program.

If you want to further your education, if you are enthusiastic and have a strong work ethic, if you need to upgrade your skills or if you want to get the "feel" of college classes before making a decision about going back to school or committing to a specific program, then the *FREE* **START** opportunity is for you.

Begin at ISU in May, August or January - only one semester – only three days and about twelve hours a week - and determine the most successful education program that will **START** you on a path to a better life.

START can help you with opportunities for ISU scholarships, career-focused math and writing workshops, career and educational counseling, tutors and mentors who will be there *for you* and *with you* to provide support.

You will be able to take advantage of a "College Success" preparation course as well as emergency funds for healthcare, child care, transportation, and other emergency needs.

There will be workshops on the college application process, financial aid, university resources and – when you finish the program, you will receive a backpack filled with school supplies – and be eligible for over \$2,000 in scholarships!

Contact the **START** program today! Learn about this special opportunity to help you determine what success can look like for you!

Successful Transitions and Retention Track (S.T.A.R.T)

For more information, please contact:

Chris, at 282-5851, chrisg@p4peid.org

She wants to hear from you!

You may also apply for the **START** program online and someone will contact you ...

<http://www.isu.edu/start/>

“Partners for Prosperity is dedicated to reducing poverty by building assets and creating opportunities. We believe in marshaling resources, forming partnerships and developing innovative programs to benefit working and low income people. “

Partners for Prosperity is a nonprofit organization that focuses on two critical areas for poverty reduction: financial literacy and education/training that leads to living wage jobs. Having an educated and skilled workforce is good for our people, our communities and our region of eastern Idaho.

“Working
together for
regional
prosperity in
eastern Idaho”

Information provided by:



University
of Idaho



Partners for Prosperity
NEW BEGINNINGS FOR EASTERN IDAHO

625 West Pacific, Suite 1, Blackfoot, ID 83221 ~ 208.785.0059 ~ www.p4peid.org

designed by Kathy Miller



Partners for Prosperity

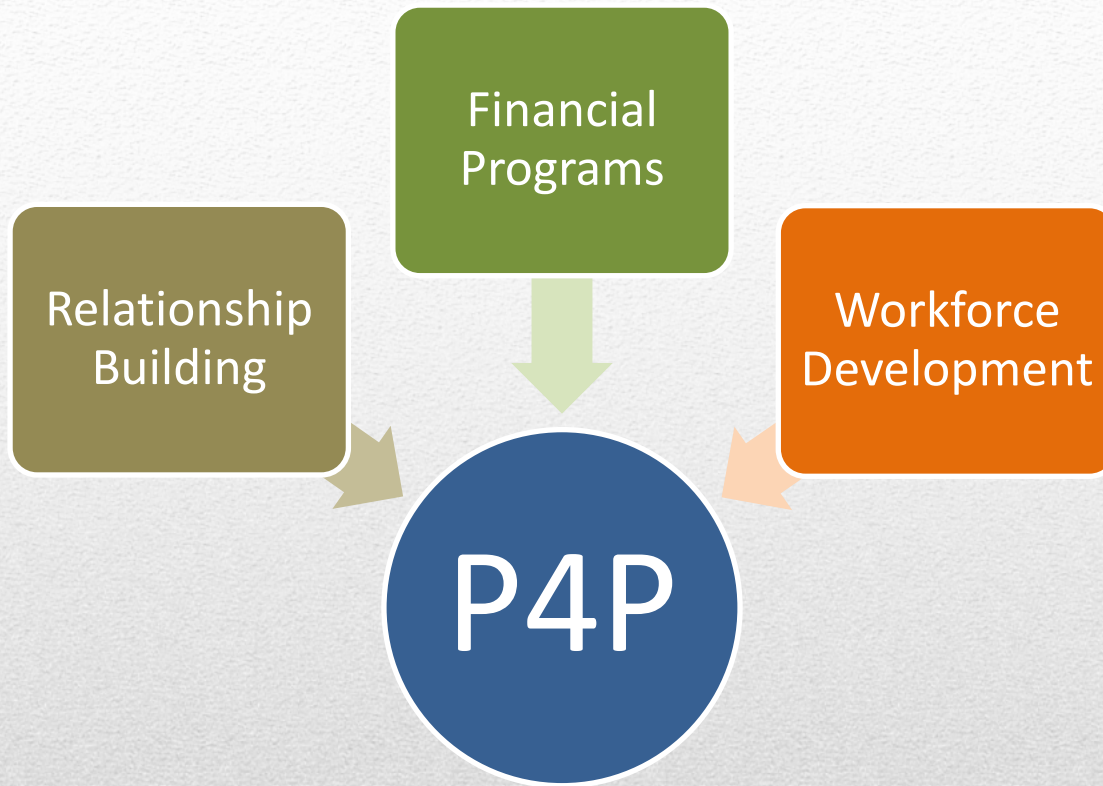
2014 UI-Micron Innovation Project

“Partners for Prosperity is dedicated to reducing poverty by building assets and creating opportunities. We believe in marshaling resources, forming partnerships and developing innovative programs to benefit working and low income people.”

- Nonprofit with 501c3 status
- 12 years working in eastern Idaho
- Programs throughout region and state
- We are P4P!



Who is Partners for Prosperity?



P4P Programs



- Identify & develop programs to mitigate gaps & barriers in education/workforce training programs for low income people
- Outreach and Recruitment for ESTEC
- Promote STEM education and career awareness
- Promote Professional Technical Education
- Outreach and recruitment for START Program



Workforce Development—"learn and earn"

Research

- Idaho has 5th highest % in nation for poverty among 18-24 year olds
- Idaho has low % of 18-24 year olds in college compared to 36.5% nationally
- 30% of sophomores do not know how to apply to college
- 70% do not know how to apply for financial aid

Proposed Innovation

- Public awareness campaign on PTE and STEM education and career opportunities
- Workshops in 3 area high schools to assist with college applications, FAFSA applications and to promote STEM career pathways

UI-MICRON Innovation Grant

- STEM Commercial
- “Get Hired” Poster
- 1000 Higher Education booklets distributed to seven area high schools
 - 3 standard high schools
 - 3 alternative high schools
 - 1 tribal high school

STEM Science Technology Engineering Math can get you there!

Get Hired

“STEM jobs lead to careers that pay a living wage”

Get Started With A STEM Career Today:

Requiring an associate's degree (2yr.) or less

- Energy Systems Technology
- Electrical Engineering Technician
- Web Developer/SEO
- Licensed Practical Nurse
- Document Control Specialist
- Surgical Technician
- Computer Programming
- Manufacturing Technician
- Chemical Technician
- AND MANY MORE

Requiring a bachelor's degree (4yr.) or more

- Software Engineer
- Nuclear Engineer
- Business Analyst
- Medical Scientist
- Biochemists/Biophysicists
- Occupational Therapists
- Data Architect
- AND MANY MORE

Contact a Local College NOW!

EITC
Eastern Idaho
Technical College
208.524.3000 x 3344

University of Idaho
208.282.7900

Idaho State UNIVERSITY
208.282.2822

Information provided by:
Partners for Prosperity
Micron Foundation
University of Idaho

designed by Kathy Miller • www.p4pnet.org

Average Hourly Earnings of Full-time Private Wage and Salary Workers in STEM Occupations by Educational Attainment, 2010

	Average hourly earnings		Difference	
	STEM	Non-STEM	Dollars	Percent
Some college or associate degree	\$28.63	\$19.02	\$7.61	40.0%
Bachelor's degree only	\$35.81	\$28.27	\$7.54	26.7%
Graduate degree	\$40.69	\$36.22	\$4.47	12.3%

Source: EIA calculations using Current Population Survey public-use microdata and estimates from the Employment Projections Program of the Bureau of Labor Statistics.

15,519 Idaho STEM job openings in 2013.

In 2018 92% of all STEM jobs will require education after high school.

80% of the fastest growing careers are in STEM fields.

Get on the STEM pathway Now!

Outcomes

- No pre-existing materials
 - PTE/STEM
 - Higher Education in Idaho 2012
- No standardized materials
- Bureaucracy
 - Permissions and approvals
 - Standard operating procedures
- Entre to high schools & Presentations
 - Counselor time and resources



Outcomes: Difficulties Tell a Story

- Concise, statewide promotional materials distributed early in high school
- Focus on the “how to” apply for post secondary education, not the “where to attend”
- Watch academic vernacular
- De-stigmatize Professional Technical Education; it’s not your grandpa’s Vo-Tech
- Link post secondary education to future jobs in Idaho; STEM emphasis
- Additional research on the link between PTE and STEM
- Meet people where they really are, not where we want them to be or where we think they should be

Recommendation: Paradigm Shift



Jessica Sotelo

Executive Director

Partners for Prosperity

625 West Pacific

Blackfoot, ID 83221

208-681-0318

Chris Guthrie

Workforce Dev. Specialist

Partners for Prosperity

625 West Pacific

Blackfoot, ID 83221

208-317-6988



For More Information
