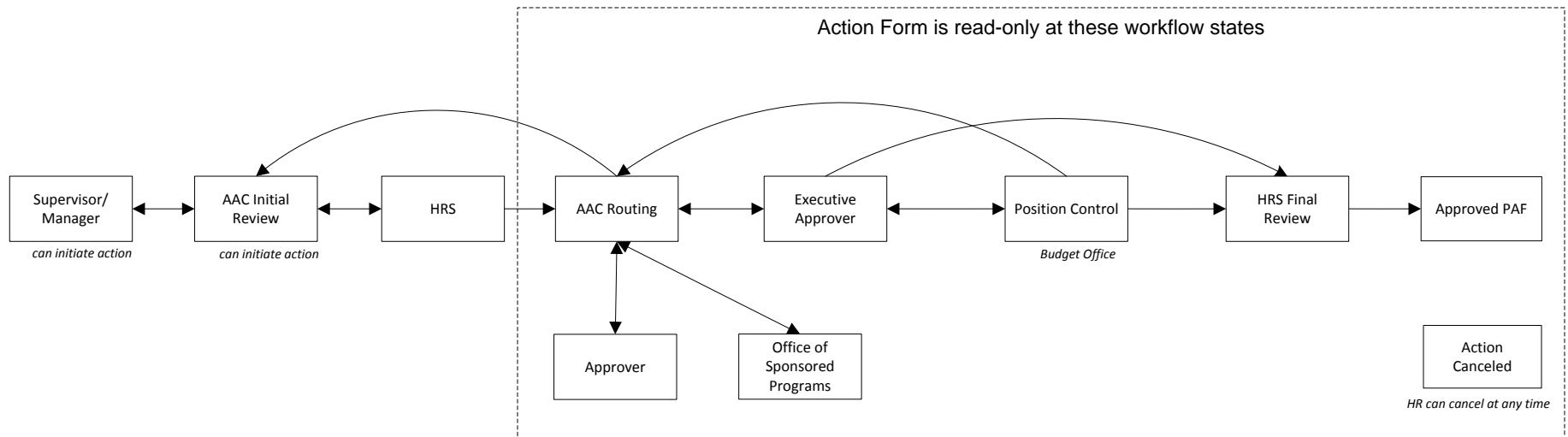


University of Idaho

11/24/2014

Staff/Professional: New Position Action & Modify Position Action Workflow

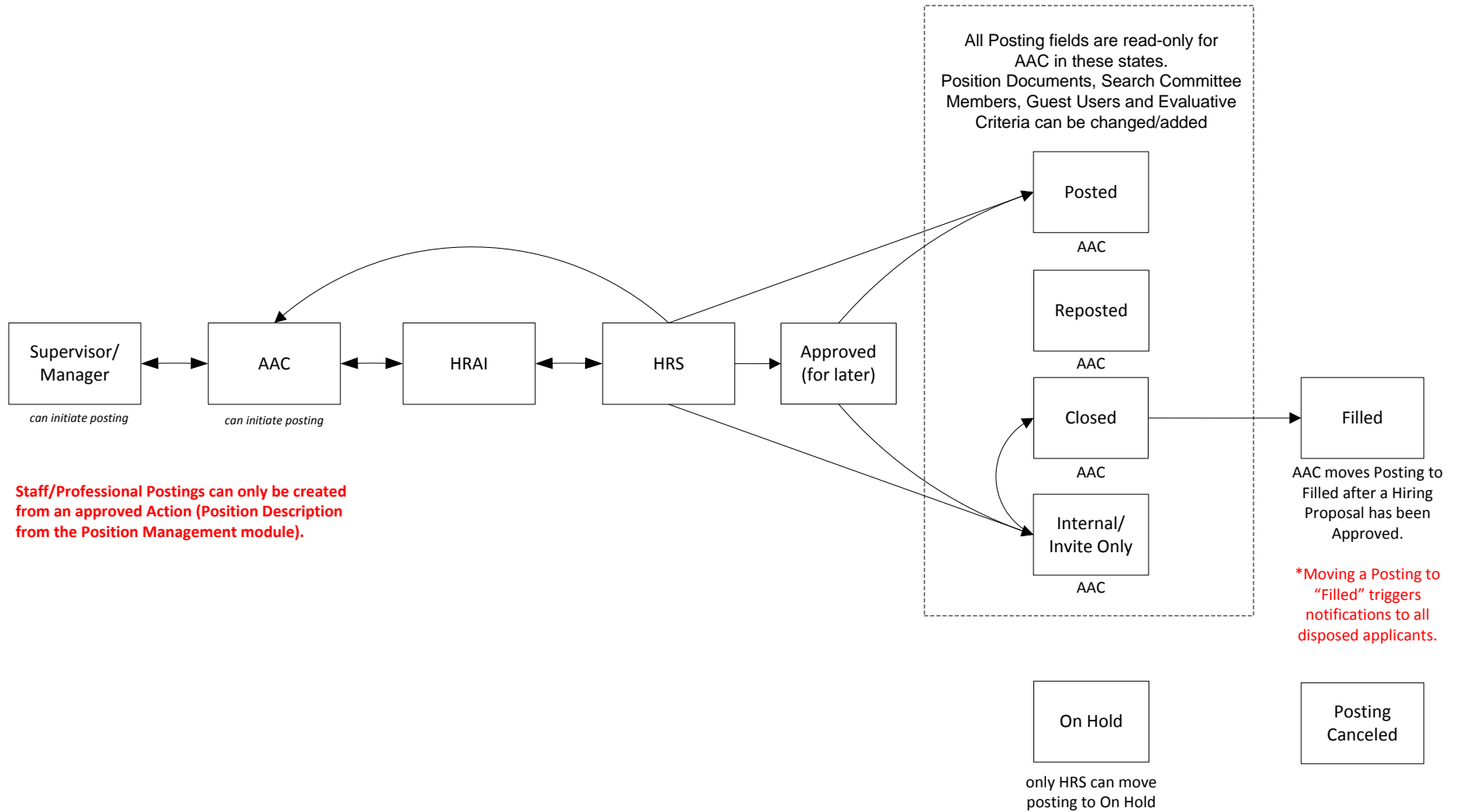


***Actions only need to be sent to Position Control for the following reasons:
1) A PCN needs to be reactivated
2) A "New" position is being created and will utilize a PCN below 9000

University of Idaho

11/24/2014

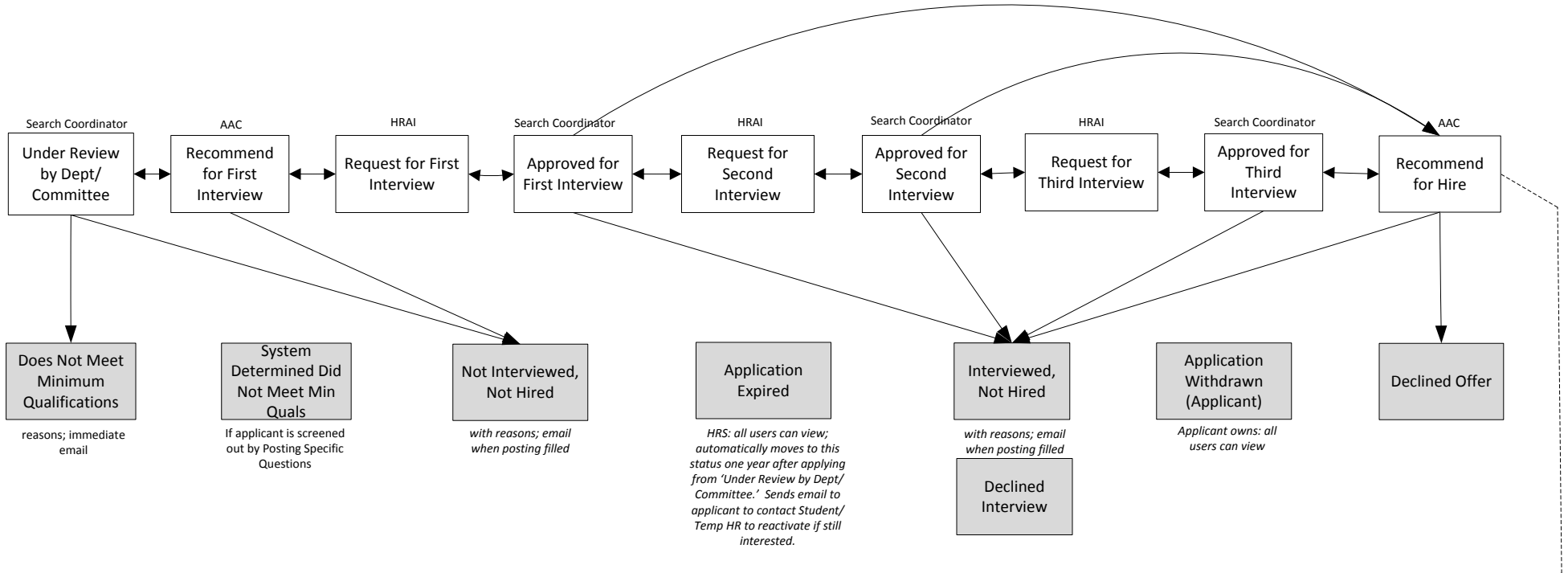
Staff/Professional Postings



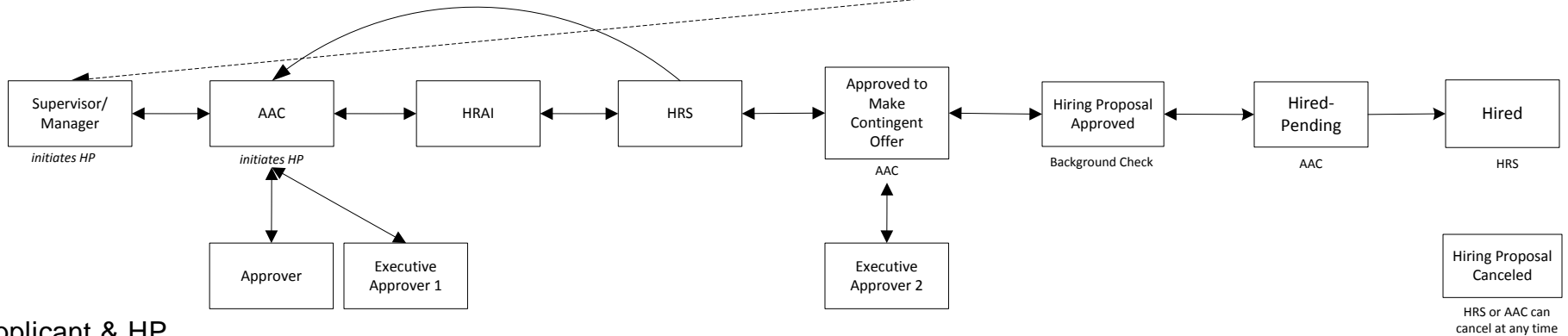
University of Idaho

11/24/2014

Staff / Professional Applicant Workflow



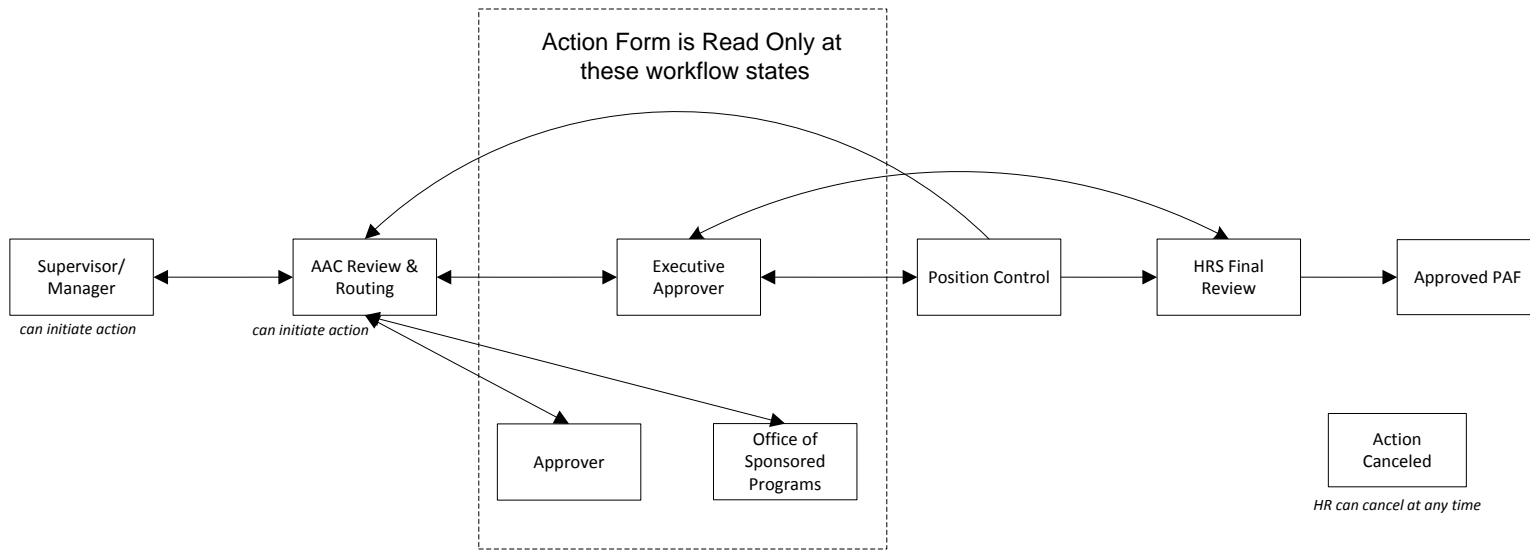
Staff/Professional Hiring Proposal Workflow



University of Idaho

11/24/2014

Faculty: New Position Action & Modify Position Action Workflow

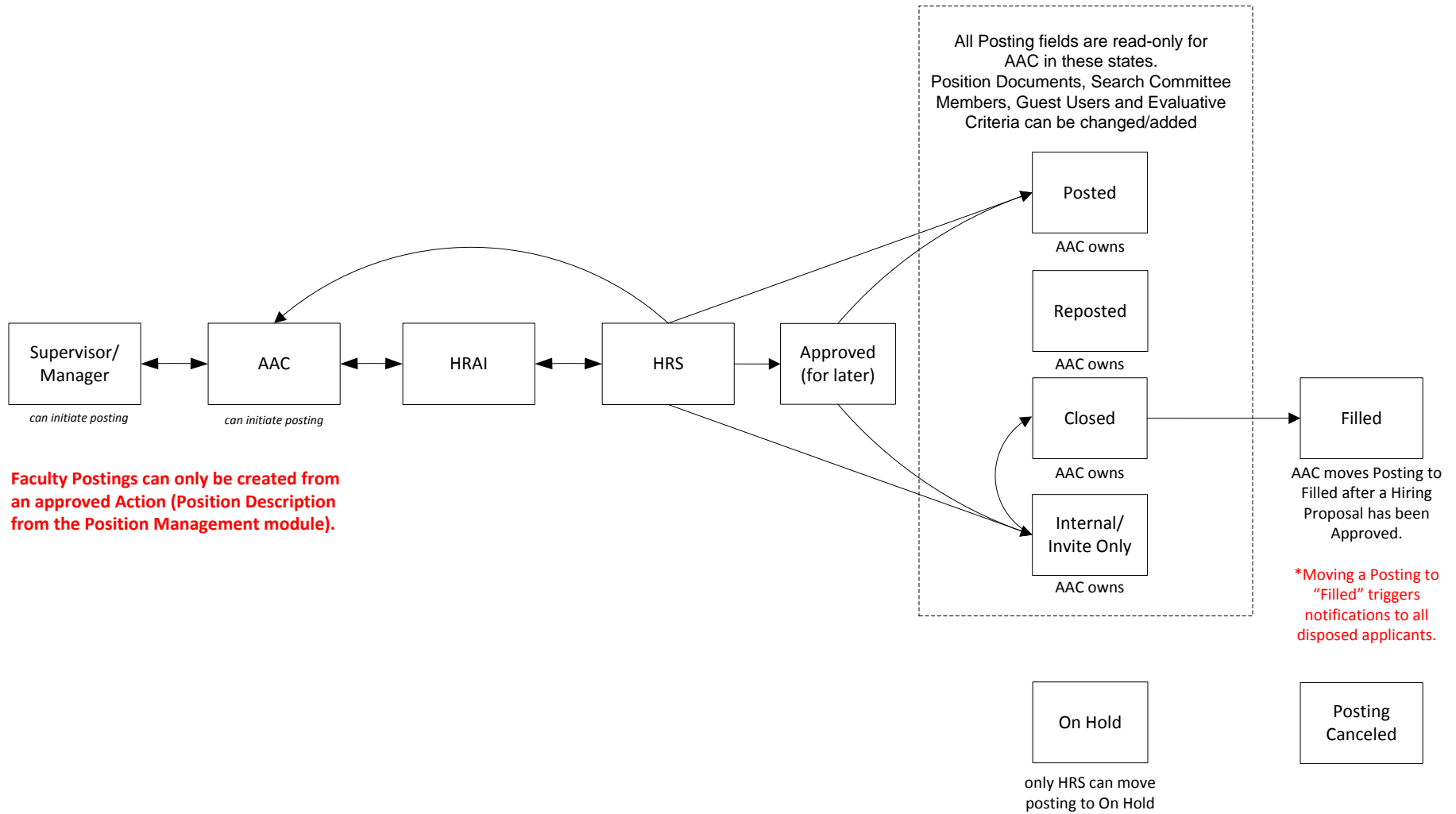


*****Actions only need to be sent to Position Control for the following reasons:**
1) A PCN needs to be reactivated
2) A "New" position is being created and will utilize a PCN below 9000

University of Idaho

11/24/2014

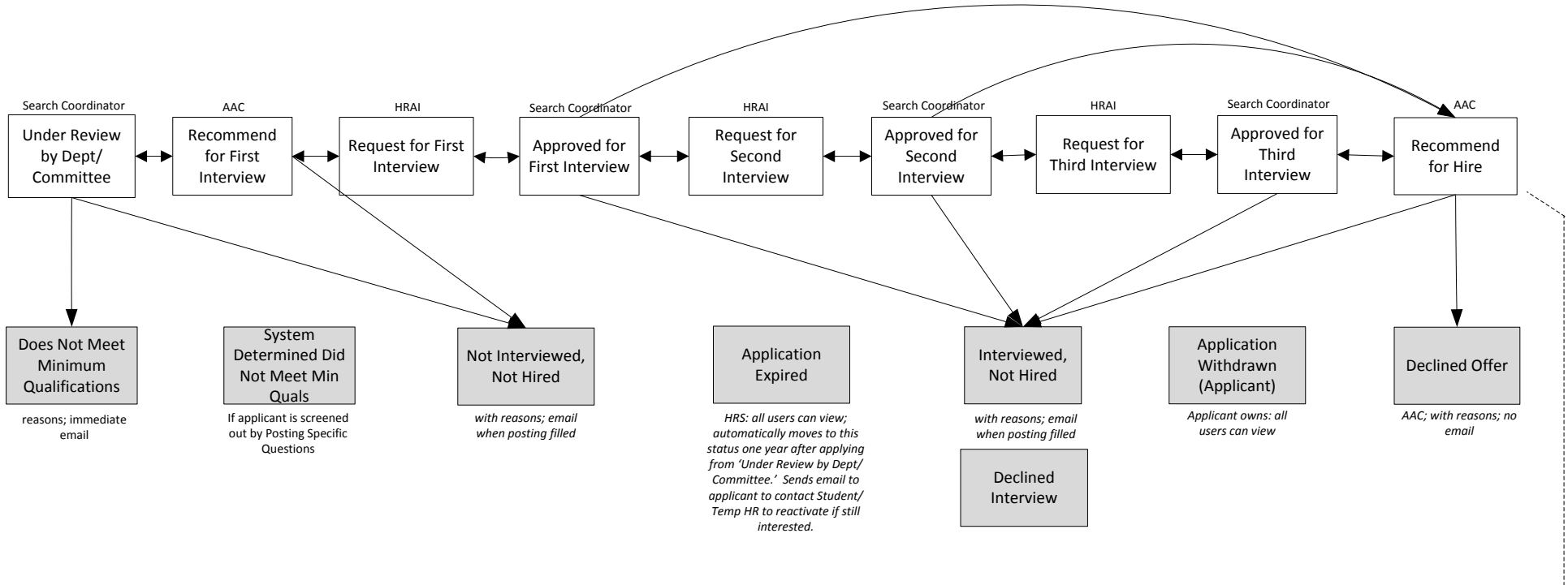
Faculty Postings



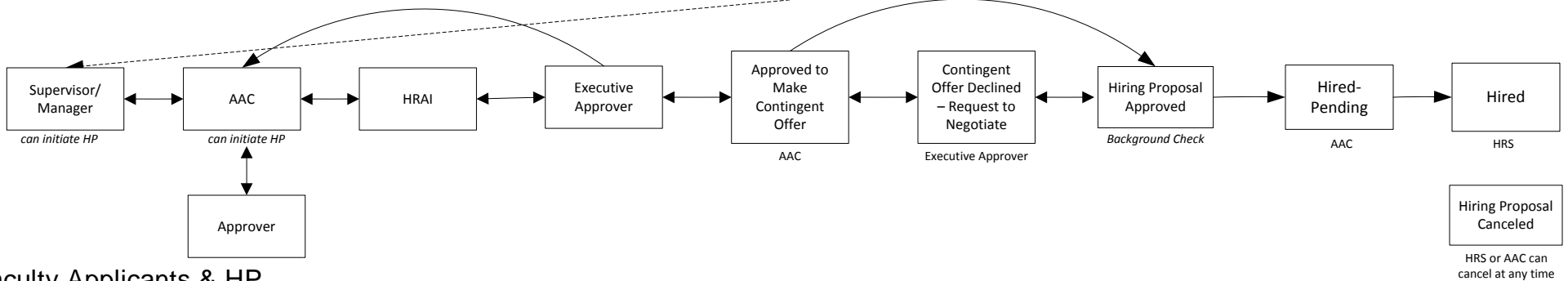
Faculty Postings can only be created from an approved Action (Position Description from the Position Management module).

University of Idaho
11/24/2014

Faculty Applicant Workflow



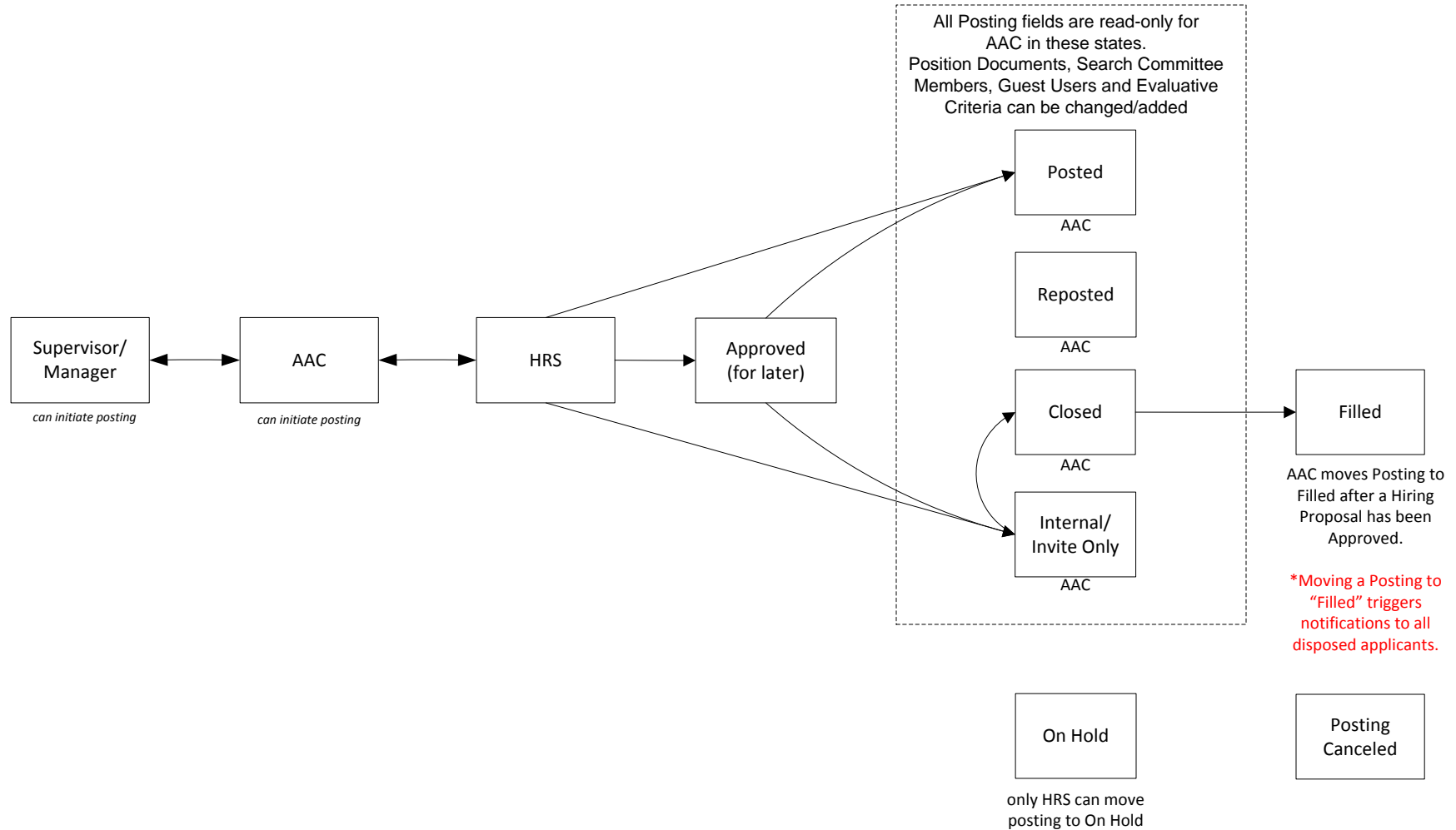
Faculty Hiring Proposal Workflow



University of Idaho

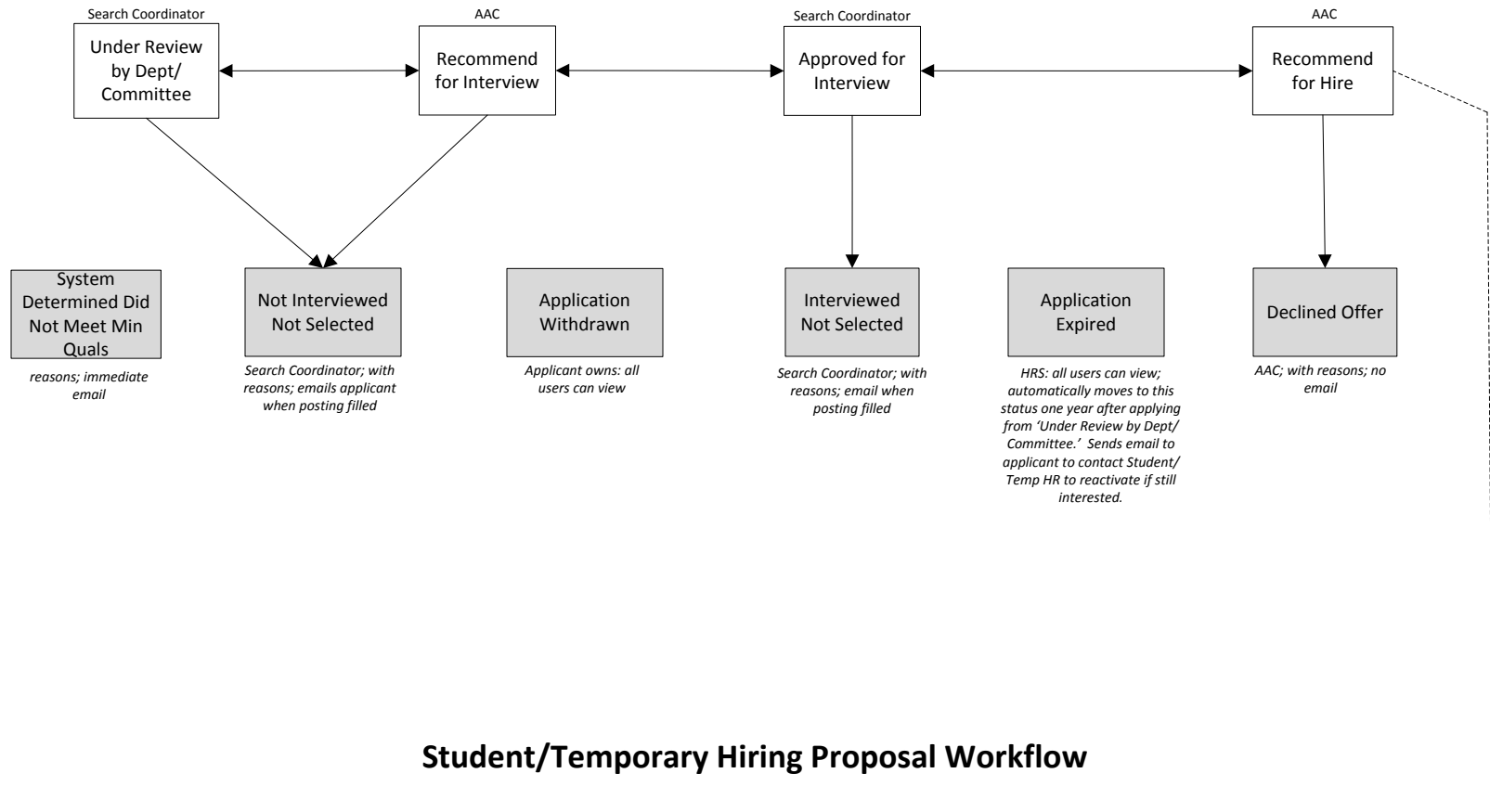
11/24/2014

Student/Temporary Postings



University of Idaho
11/24/2014

Student/Temporary Applicant Workflow



Student/Temporary Hiring Proposal Workflow

