



LATAH COUNTY 4-H NEWSLETTER

“To Make the Best Better”

University of Idaho
Extension



HEAD



HEART



HANDS



HEALTH

LATAH COUNTY 4-H OFFICE

We are all getting excited for spring to arrive...warmer weather, spring break not too far away, and time outside! There are a lot of upcoming events the next few weeks, including Know Your Government, Livestock Field Days, and several spring horse activities. Make sure you are enrolled so you can take advantage of these opportunities!

While we wait for spring to get here, youth and leaders, please take the time now to re-enroll in the 4-H year if you have not done so already. Focusing on prioritizing enrollment now means you will be prepared for upcoming events and the Latah County Fair. Check out page 2 for details on how to enroll in the 2021-2022 year.

We are thrilled to see so many returning families, and to those who are new to our program, welcome! We are glad you are here!

Sara Fluer
Associate Extension Educator
UI Extension, Latah County

February 2022

INSIDE THIS ISSUE:

- Latah County 4-H Office..... 1
- Enrollment & 4-H Resources 2
- Livestock News.....3-4
- Horse News 5
- Leader’s Corner 6
- Calendar 7
- Model Horse Show Entry 8
- Field Days Brochures 14

Upcoming holiday office closures:

Monday, February 21—President’s Day



February 23 & 24, 2022
Pollinator Summit
Supporting Native Pollinators in the Palouse Region

YOUTH POLLINATOR SUMMIT

Thursday, February 24—3:00 pm—5:00 pm

In the Classroom at Latah County Fairgrounds, In-person after school activities for Kindergarten thru Middle School. Free! High school students welcome to volunteer.

- Eventbrite Registration: <https://pollinatoryouthsummit.eventbrite.com>

For more information: latah@uidaho.edu, 208-883-2267

COLLEGE SCHOLARSHIP



Graduating seniors, the application for the Latah County 4-H David Trail Green & Gold Scholarship is available. Must be current members of Latah County 4-H in good standing to apply.

Visit the [Latah County Extension website](#) for the application, scroll down to 'Scholarships and Awards' and open the David Trail Green and Gold

Scholarship application. You may also contact our office for a copy.

Applications are due May 1.

UI Extension, Latah County
200 S. Almon Street, Suite 201
Moscow, ID 83843
Phone: 208-883-2267
Fax: 208-882-8505
Email: latah@uidaho.edu

4-H Youth Development
Sara Fluer, 4-H Educator
Phone: 208-883-2267
Email: sfluer@uidaho.edu
Follow 4-H on Facebook @LatahCounty4H

It is U of I policy to prohibit and eliminate discrimination on the basis of race, color, national origin, religion, sex, sexual orientation and gender identity/expression, age, disability, or status as a Vietnam-era veteran. This policy applies to all programs, services, and facilities, and includes, but is not limited to, applications, admissions, access to programs and services, and employment.

4-H Members & Returning Leaders...

TIME TO ENROLL IN THE NEW 4-H YEAR!

How to Enroll:

- 1) Go to <https://4h.zsuite.org/>
- 2) Existing users—log in using your family’s email address & password. New users—create an account.
- 3) From your Family Dashboard, select the family member you want to enroll.
- 4) Click on the blue button, **‘UPDATE ENROLLMENT’**, to initiate the 2021-2022 enrollment process. You will update your contact/personal information, sign the required waivers, & make your club & project selections. Please do not enroll using your junk or spam email address. News & updates about 4-H are communicated primarily by email.
- 5) Submit enrollment & follow up by paying your 4-H dues*. See below for payment process.

* Complete your enrollment by paying your dues via check, cash, or call us to pay w/ credit card (service fee applies).

General Members: \$25 Horse Members: \$30 Leaders: \$5 Family Cap (3+ enrolled members): \$75

Enrollment is not considered complete & members are not covered by 4-H accident insurance until dues are paid!



Stay in the loop! Our office sends a monthly newsletter via to all families & leaders.

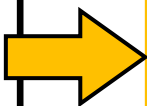
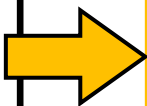
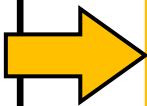
This is your primary source of information for all Latah County 4-H news.

You can also follow us on Facebook [@LatahCounty4H](#)

4-H families and Leaders, don’t forget to review these important documents at the beginning and throughout the 4-H year.

Many questions and concerns can be answered by referring to these resources.

This information will be posted in every 4-H newsletter and can be found online on the [UI Extension, 4-H Youth Development website.](#)



IMPORTANT 4-H RESOURCES

All 4-H families and leaders should be aware of the following guiding documents for 4-H operations in Latah County and across all Idaho 4-H programs.

Bookmark the UI Extension 4-H Youth Development website for access to all sorts of 4-H resources!

<https://www.uidaho.edu/extension/4h/documents-records>

Idaho 4-H Policies & Procedures

It is the responsibility of all members, leaders, and parents/guardians to follow 4-H policies and procedures, which includes the 4-H Code of Conduct. You are asked to review and sign the Code of Conduct each year during enrollment.

Idaho 4-H Project Requirements Handbook

Not sure what is required of your project? Need some project specific resources to get started? Use the project requirement handbook throughout the year to answer your questions!

Latah County Animal Project Policies

This document pertains to county-specific policies for all animal projects, including breeding, market, pet, and small animals.

These are policies that are not already published in the Policies & Procedures and the Project Requirements Handbook. Please make yourself aware of its contents and keep a copy nearby.

CHIP GILLIAM MEMORIAL PROGRAM

In need of financial assistance for your market project? The Chip Gilliam Memorial Fund is a loan program through the Latah County Fair Office. Since 1997, the loan program has been available to help Latah County youth with financial assistance for their 4-H and FFA market animal projects.

Loan applications are due to the Fair Office March 31, but applications are reviewed on an ongoing basis as funds are available—when in doubt, apply! Applications may only be submitted by Latah County 4-H or FFA members, with approval of their 4-H leader or FFA Advisor.

Applications are found on the Latah County Fair & Events Center [website](#). Questions can be directed to the Latah County Fair Office at 208-883-5722.

ANIMAL OWNERSHIP

Reminder that as you select animal projects for the year that *all animal projects*, large livestock and small animals, require ownership and/or providing primary care for a specific number of days.

Plan ahead and make sure you are enrolled, dues paid, **and** have your animals secured well in advance.

Days of possession are set at the state level. Refer to the [Idaho Project Requirements Handbook](#) for more information.

- 150 days—Market Beef
- 100 days—Market Swine
- 70 days – Market Goat and Market Sheep
- 90 days—Llama/Alpaca, Breeding Beef, Pullets/Laying Hens, Family Flock, Cat, Cavy, Dairy Cattle, Dog, Breeding meat Goat, Dairy Goat, Pack Goat, Pet Goat, Horse, Breeding Rabbit, Pet Rabbit, Breeding Sheep.
- 60 days—Pocket Pet
- 8 weeks—Market Broiler and Market Rabbit

AREA LIVESTOCK FEED PROGRAMS

As you plan your livestock projects, remember that many businesses in the area offer programs that support youth livestock members. Ask for details next time you visit these businesses.

- SPENCE HARDWARE—enroll in the market project program to be eligible for discounts and gift certificates.

Inquire now so you don't miss account setup deadlines.

- INTERMOUNTAIN FEED—receive 1 free bag of starter feed for your market project when you sign up for their Market Project Program.
- NORTH 40 OUTFITTERS—Youth members are eligible for 10% off regular priced feed and show supplements through the Junior Livestock Feed Program.
- CHS PRIMELAND—ask about their Rate of Gain program!

MARKET LIVESTOCK TAGGING/WEIGH-IN

Mark your calendars now! Tagging dates for Latah County market animal projects can be found below:

- **Beef**—Saturday, April 16, Monson Barn—UI Campus, 7:30 am—9:30 am.
- **Swine**—Friday, June 3, 2022, Latah County Fairgrounds, 2:00 pm—7:00 pm.



YES, we are *weighing and tagging market swine* this year. Why?

To fulfill the requirement of providing a uniform feeding period for market species, minimize liability to leaders, and to provide a valuable educational opportunity for youth. This decision was reached based on input and support from swine and livestock leaders, ISDA, and guidance from State 4-H office leadership.

Just as it is expected for all beef, goat, and sheep members, this is not optional for 4-H swine members. You are expected to have your animals tagged at this event if you wish to participate in the Latah County Fair. Reminder postcards will be sent regularly.

- **Sheep & Goat**—Wednesday, July 6, 2022, Latah County Fairgrounds, 4:00 pm—6:30 pm.

4-H members must have paid annual enrollment dues and be 'Active' in ZSuite by their respective species tagging/ weigh-in date.

To ensure consistency between programs, members should be prepared to designate their primary project animal and floater as either 4-H or FFA at designated county tagging/ weigh-in events and deadlines. Postcards will be sent out closer to each tagging date with specific costs of vaccines.



Educational Opportunity for Latah 4-H Youth & Leaders!

LIVESTOCK FIELD DAYS

Annual Livestock Field Days 2022 will be held in person this year! Youth and Leaders, whether you are new to livestock or are a seasoned pro, there will be a lot of valuable interactive content covered!

- **SWINE**—March 12, Asotin County Fairgrounds, Asotin, WA. Registration—<https://2022swine.eventbrite.com>. Deadline to register is March 4, 2022.
- **BEEF**—March 26, UI Beef Center, Moscow, ID. Registration—<https://2022beef.eventbrite.com>. Deadline to register is March 18, 2022.

Counts toward livestock leader training, too!

Latah County Leader's Council has generously offered a \$5 scholarship for currently enrolled

Latah County 4-H members and leaders.

Complete your enrollment now so are eligible. This scholarship applies ONLY to 4-H members and leaders. Any parents, or non-4-H members, attending this event are not qualified for this discount and should register separately and pay the full \$10 registration.

- Click on the green "Tickets" button. Just above the words "General Admission" click the blue "Enter promo code" link.
- Type in 'Latah' and click the blue "Apply" button on the right side of the promo code box.
- Choose the number of tickets for qualified youth and leaders, payment method, then click the red "Checkout" button to complete the transaction.

If you need to register non-qualified youth or adults, please repeat the process without entering the promo code.

For Field Days schedules, check out the brochures at the end of this newsletter!

County-wide Project Opportunities

As you think about your 4-H projects for the year ahead, consider some of our county-wide projects! **Enroll as soon as possible so you don't miss out on any opportunities.**

- Shooting Sports—Archery, Shotgun, Rifle
- Dairy Cattle
- Small Animals—Cat, Dog, Cavy, Pocket Pet, Rabbit
- Horse

If you are interested in other projects not on this list that your club does not offer, please contact our office. If there is a certified 4-H leader in the county available to lead that project, we can help connect you through another club!

Contact the Extension office if you have questions about how to get involved with any projects.

MODEL HORSE SHOW

The 4-H model horse show will be held on Sunday, February 27 at 1:00pm at the Latah County Fairgrounds.



Deadline to register is February 21. Open to all enrolled 4-H members and 4-H youth family members. You can find the entry form and rules on page 8.

HORSE PROJECT

Youth interested in the horse project, enroll now so you do not miss out on opportunities and year-end award eligibility!

In addition to the horse show in July, you are required to participate in at least one county-wide horse activity in order to be eligible for year-end awards.

Opportunities to fulfill this requirement include:

- *Latah County Horse Bowl*—March 6 @ 1pm, Latah County Fairgrounds. (*minimum 8 youth attendees required to hold this event*). Please RSVP by Monday, February 28 at tinyurl.com/Horse-Bowl. Copy/paste if direct link does not work. If minimum number of attendees is met, this is a County-Qualifying Contest to move on to District Horse Bowl!
- *Horse Judging & Demonstrations (Moscow)*—April 9 @ 8:30 am. Registration details coming soon!
- Live Horse Judging in Lewiston—May 14. NOTE: This is the County-Qualifying Contest for judging at the State Horse Contest in July in Southern Idaho!

You also need to have your horse identification papers on file with the Extension office no later than April 15. Identification forms will be sent to all enrolled horse members.

Plan ahead and ENROLL in the Horse project now so we know to expect you! Dues are \$30. Targeted email correspondence to horse members and leaders will be starting soon with important dates, deadlines, and events. Stay tuned!

HORSE IDENTIFICATION PAPERS

Due to Latah County Extension office **April 15**. Every odd-numbered year, all members are required to turn in new/updated papers on their project animal(s). If you are new to the horse project or are a returning member with a new horse, please submit identification papers!

If your family has multiple horses that you may ride, we strongly encourage turning in identification papers for all horses by the above deadline. Minimum ownership/lease for horses is 90 days, so you need to have all possible project animals owned and identified with our office by April 15.

REMINDERS

Safety Reminder! 4-H members participating in any 4-H equestrian activity must wear an approved helmet whenever they are mounted on an equine or are in a vehicle (cart, wagon, buggy, etc.) being pulled by an equine. An approved helmet meets the minimum performance standards imposed by the American Society for Testing Materials (ASTM) F1163 and includes certification and labeling required by the Safety Equipment Institute (SEI).

PNW 4-H Horse Contest Guide—Idaho uses the PNW 4-H Horse Contest Guide. It is a good idea to review this guide every year so you are familiar with the rules and expectations of participating in 4-H Horse Contests. Hard copies are available at Latah County Extension or you can access it on UI Extension's [website](#).

Horse Project Resources—check out UI Extension's website for horse project resources, including project requirements, permanent identification and health record, project manual, and more! <https://www.uidaho.edu/extension/4h/projects/horse>.



SHOOTING SPORTS

Interested in becoming a Certified Shooting Sports Instructor? The Northern District is offering a Level I training **April 9-10** in Post Falls.

Prospective instructors must first be certified 4-H leaders at the county level before completing this training.

Scholarships/Travel stipends are available—contact Latah County Extension.

Learn more about this training and find the registration form at <https://www.uidaho.edu/extension/4h/programs/shooting-sports/instructor/certify>.

LEADER TRAINING OPPORTUNITIES

To maintain leader certification, we recommend 4-H leaders complete 2 hours of continuing education related to 4-H, youth development, or your project area. Check out some of the opportunities below:

- Once you are enrolled in ZSuite, check out the *Clover Academy* (left side of your screen in the black navigation bar). Here you can participate in two online courses:
 1. **Idaho 4-H Volunteer Orientation Modules**—a great course required for brand new volunteers, and is available to seasoned volunteers interested in a refresher.
 2. **Idaho 4-H Protecting Minors Training**—a short video required of all new volunteers, and every three years for returning volunteers.
- **QPR (Question, Persuade, Refer) Suicide Prevention**—Idaho 4-H & Idaho Dept. of Health and Welfare have partnered to provide QPR Gatekeeper training to 4-H Volunteers. QPR is designed to teach others the warnings signs of a suicide crisis and how to respond. This is a no-cost, 1-hour online training that could help save a life. Register at: <http://bit.ly/Idaho4HQPR>. Send your completion certificate to sfluer@uidaho.edu for your leader file.

- **Stewards of Children**—offered through Gritman Medical Center. Extension will fully reimburse you the cost of the class with proof of attendance.
- If you are taking a training through your employer or other volunteer commitment (such as CPR/First Aid) that you think might apply to your work as a 4-H volunteer, please contact our office about applying it as your annual 4-H training.

MEETING ATTENDANCE

This time of year, our office receives a lot of questions from leaders about club and project meeting attendance. Page 10 of [Idaho 4-H Policies and Procedures](#) specifies that members are expected to attend the *majority* of scheduled club and project meetings.

- Establish your meeting schedule well in advance so members can put dates on their calendars.
- Knowing the total number of meetings in advance helps families plan ahead and assists you as a leader in holding members accountable for their attendance.

Per Policies and Procedures, regular 4-H *clubs* should meet 6 or more times per year. For *project* meetings, project leaders can determine the total number of meetings they wish to schedule.

Upcoming meetings for Horse Leaders, Animal Project Leaders, & Leader's Council:

- March 28
- May 23
- July 25
- September 26
- November 28



Meetings will be held at the Latah County Fairgrounds unless otherwise noted.

Groups meet as follows:

- Horse Leaders—5:30 pm
- Livestock Leaders—6:00 pm
- Leaders Council—6:30 pm

FEBRUARY

- 19-21—Know Your Government Conference
- 21—President's Day, Latah County Extension closed (holiday)
- 27—Model Horse Show

MARCH

- 6—Latah County Horse Bowl
- 12—Swine Field Day, Asotin County Fairgrounds, Asotin, WA
- 26—Beef Field Day, UI Beef Center, Moscow
- 28—Leader's Council meeting

APRIL

- 9—Latah County Horse Judging
- 15—Horse Identification Forms due to Extension office
- 16—4-H & FFA Market Beef Weigh-In/Tagging, UI Beef Center Monson Barn

MAY

- 1—Applications due—Latah County 4-H David Trail Green & Gold Scholarship
- 14—live horse judging opportunity in Lewiston, NPC Fairgrounds
- 15—Small Animal Clinic—location TBA

JUNE

- 3—4-H & FFA Market Swine Weigh-In, Latah County Fairgrounds
- 10-11—Idaho State Shooting Sports, Boise
- Dates TBA—Idaho State Teen Association Convention (STAC), Moscow, UI Campus

JULY

- Dates TBA—Idaho State Horse Contest
- 6—4-H & FFA Market Sheep/Goat Weigh-In, Latah County Fairgrounds
- 15-18—CL2N 4-H Camp, Camp Sanders
- 23—Latah County 4-H Horse Show

This calendar evolves throughout the year.

Stay tuned for additional dates TBA for 2022!



LATAH COUNTY 4-H

Model Horse Show

Sunday, February 27, 2022

Latah County Fairgrounds – Large Room

Show begins at 1:00pm

(doors open for setup at 12:00pm)

To request reasonable accommodations, please contact Latah County Extension at 200 S. Almon St, Ste 201, Moscow, ID 83843, latah@uidaho.edu, or 208-883-2267 at least two weeks prior to the event.

About the Model Horse Show

- A model horse show is like a regular horse show, but for model horses, such as Breyers.
- Horses are to be entered in classes based on size, action, & theme
- Horses will be judged by condition, conformation, & quality

***NOTE:** Minimum of 10 exhibitor entries must be received to hold show. Exhibitors must register by deadline. Entries at the door will only be accepted if minimum number of entries have been met.

Registration Deadline: February 21, 2022

Registration Fee

- **\$5/class**
- **\$20 for the day**
- **\$50 for families of 3 or more**

*Please make checks payable to Latah County Horse Leaders.
All proceeds support the Latah County 4-H Horse program.*

For More Information:

Contact Latah County Extension

208-883-2267 | sfluer@uidaho.edu



University of Idaho
Extension



It is U of I policy to prohibit and eliminate discrimination on the basis of race, color, national origin, religion, sex, sexual orientation and gender identity/ expression, age, disability, or status as a Vietnam-era veteran. This policy applies to all programs, services, and facilities, and includes, but is not limited to, applications, admissions, access to programs and services, and employment.

2022 LATAH COUNTY 4-H MODEL HORSE SHOW

Date: February 27, 2022

Location: Latah County Fairgrounds – Middle Room
1021 Harold Street, Moscow, ID

Time: Doors open for setup at 12:00 pm; Show begins promptly at 1:00 pm.

Registration is required by **February 21, 2022**. Model horse show will be canceled if there are fewer than 10 entries received at the Latah County Extension office by the deadline.

Entries will be accepted at 12 pm the day of show only if the model horse show already has 10 entries. **Please get your entries in early.**

Things you need to know:

- A model horse show is like a regular horse show, but for model horses... like Breyers.
- Horses should be clean and free of dust.
- Horses should be entered in appropriate classes and may enter in more than one class. Tack and Riders Optional.
- If tack and/or rider are used, appropriate tack and dress for class/event should be used. Please read the class descriptions for more information.
- Horses will be judged as horses in a regular horse show. Please read the class descriptions for more information.
- There are three divisions of classes: Stablemate, Classic & Traditional.
 - Stablemates are approximately 4" long x 3" high.
 - Classics are approximately 9" long x 6" high. Breyer Paddock Pals are included in the Classic division.
 - Traditionals are approximately 12" long x 9" high.
 - Ponies © Breyer should be entered in Class 28 - Grand Finale class
- Winners Circle Photo area will be available, so bring your cameras!

How it Works:

There will be three arenas (tables), while one is being judged, one will be setting up and the other will be cleaning up. The judge will move from table to table. It is the contestants' responsibility to set up their horses for the next class and remove their display from the last class promptly. Barns or tables space will be available for each member to prepare their entries.

Rules:

- Show is open to all currently enrolled 4-H members and 4-H family members.
- One entry per class
- Entry must have entry number

- Model may be entered in more than one class.
- Tack & rider not required or considered in judging.
- Props are NOT allowed except in Halter, Other Performance, Jumping, Racing, and Scene Classes. No props are allowed for the costume class.
- All awards are final.
- Exhibitors are responsible for set up & removal of models before and after each class.
- Parents may assist children with entries as needed. Parents may NOT help children with Scene or Costume class set up.

Awards:

- First through sixth place awards will be given for each class.
- A Championship Class will be held for each division (Stablemate, Classic & Traditional). Any horse receiving a First Place award in any class (except classes # 28, 29, 30, 31) are eligible to enter the Division Championship class. Awards or ribbons will be given in each division - First through Sixth place.
- The First & Second place winners of each Division Championship class will be eligible to enter the Overall Grand Champion class. Grand Champion & Reserve Grand Champion will be awarded to the top two horses in this overall class.
- The judge's decisions are final.

Division Age champion/reserve participants (cloverbud, junior, intermediate, senior) winners are determined from all 31 classes by a point system (1st = 6 points, 2nd = 5 points, 3rd = 4 points, 4th = 3 points; 5th = 2 points; and 6th = 1 point). Cash awards will be given to the **FOUR** Champion and Reserve age participants as long as a donor for this award is secured.

Latah County 4-H Model Horse Show Class List

1. Halter Stablemate
2. Halter Classic
3. Halter Traditional
4. Foal Stablemate
5. Foal Classic
6. Foal Traditional
7. Pleasure Stablemate
8. Pleasure Classic
9. Pleasure Traditional
10. Jumping Stablemate
11. Jumping Classic
12. Jumping Traditional
13. Other Performance Stablemate
14. Other Performance Classic
15. Other Performance Traditional
16. Mare & Foal Stablemate
17. Mare & Foal Classic
18. Mare & Foal Traditional
19. Draft Stablemate
20. Draft Classic
21. Draft Traditional
22. Race Horse Stablemate
23. Race Horse Classic
24. Race Horse Traditional
25. Misbehaving Stablemate
26. Misbehaving Classic
27. Misbehaving Traditional
28. Grand Finale class - Fantasy, Winged, Lamé, Ponies, other Breyer or Brands of models
29. Series or collection of same molds. All models
30. Costume All Models -- members only
31. Scene All Models – members only

Champion Classes to follow - Classes # 28, 29, 30, and 31 are not eligible for Champion Classes. There will be a special award or ribbon for Class #30 and #31.

32. All STABLEMATE model 1st place class winners on table 1 (9 classes).
33. All CLASSIC model 1st place class winners on table 2 (9 classes)
34. All TRADITIONAL model 1st place class winners on table 3 (9 classes).

Overall Grand Champion Model Horse Show participant winner - The first and 2nd place winners from classes # 32, #33, and #34. Awards to Grand and Reserve overall winners.

Class Descriptions

Halter: Any horse not in motion. Horse should be standing with feet placement square. Halters may be worn, but not required.

Pleasure: Any horse moving in natural motion. Horse should appear to be a pleasure to ride.

Jumping: Any horse in an over fences position. Props may be included.

Other Performance: Any horse performing but not limited to: Cutting, Roping, Barrel Racing, Dressage, Reining, Gaited, etc. These horses can be shown in appropriate dress and/or tack for English or Western. Props are encouraged and may be included.

Mare & Foal: Any Mare/Foal set. Mare/Foal can be shown separately in other classes like the foal class or other classes.

Draft: Any horse considered a draft breed. Horses can be in motion or standing.

Race Horse: Any race horse model, old to new racing horse competitors or winners as well as other race horses. This also includes pacers and trotter horses. Models may be in a standing or moving pose. Horses in this class may wear their flowers, blankets or silks.

Misbehaving: Any horse behaving badly, such as rearing, bucking, kicking, and baulking.

Grand Finale Class (two entries per participant). Please note same placing as other classes 1st thru 5th: This class includes Fantasy, Winged, Favorite injured/lame horse, other Breyer models not fitting into other classes offered (wildlife, farm, household pets, etc.), Ponies, and other horses like toy horses, stuffed, or models that are not Breyer. Clay can be used to support the injured/lame horse and will be judged as though they are not broken. Some examples of the injured/lame horse entries are: broken legs, ears & tails, severe scratching, fading & rubs, or warped or twisted legs. Ponies could be the washable kind that can be colored on or other ponies from sources other than Breyer. Fantasy or Winged entries can be unicorns, different colors of horses with or without designs, and winged sparkly colored horses of any size.

Series or Collection: Any group of three or more of the same mold or a Breyer Series.

Costume: Dress your horse up, be original, & creative. All models accepted, only one entry per participant. Costume must be on horse, No Other Props. Class will be judged on creativity and originality.

Scene: Create a scene using one or more models combined with props, decorations & back drops. Scene must fit in a 24 in x 18 in area. All models allowed. Class will be judged on creativity & attention to detail.

Sponsored by:

WSU/Asotin County Extension

WSU/Whitman County Extension

UI/Nez Perce County Extension

UI/Benewah County Extension



**Current State of Washington Covid
Protocols will be followed.*

To enrich education through diversity, the University of Idaho and Washington State University are equal opportunity/affirmative action employers and educational institutions.

Persons with disabilities who require alternative means for communication of program information or reasonable accommodations need to contact Shawna Hobson by March 4, 2022 at nezperce@uidaho.edu or 1239 Idaho Street, Lewiston, ID 83501 or by phone at 208-799-3096.

**All individuals attending (including adults) are required to pre-register and pay registration fees no later than March 4, 2022 at:
<https://2022swine.eventbrite.com>**



**4-H and FFA Youth
Swine Field Day**

**Saturday,
March 12, 2022 at the
Asotin County
Fairgrounds**

8:00 am to 3:00 p.m.

**Most classes are held outside-
Please dress accordingly**



Youth Swine Field Day
 March 12, 2022
 Asotin County Fairgrounds
Registration is REQUIRED and DUE
March 4, 2022



Schedule:

- 8:00 am Registration
- 8:30 am Welcome
- 8:45 am Certificate Veterinary Inspection
- 9:00 am - 12:00 pm
 - Pork Quality and Meat Science
 - Feeding and Nutrition of Show Pigs
 - Show Pig Selection and Livestock Judging Class
 - Raising a Healthy Pig: Healthcare, Vaccinations and Parasites
- 12:00 pm Lunch Provided
- 1:00 pm - 2:55 pm
 - Fitting & Showing of Market Hogs
 - Swine Show Preparation
 - Show It Yourself
- 2:55 pm Evaluations/Q&A

Directions to the Asotin County Fair Grounds:

From Clarkston, take Highway 129 South to Asotin. At the flashing stop light in Asotin, take a right and follow the signs to the fair grounds.

The Swine Field Day will take place on the lower section of the fair grounds.

Questions the day of the event please call or text Judy Floch at 509-552-3635.

Presenters:

- Kerry Sanford, ISDA
Senior Agriculture Investigator
- Dr. Ben Smith, WSDA
Eastern Region Field Veterinarian
- Jessie Van Buren & UI Meat Science Team
- Mark Heitstuman, WSU/Asotin County
Extension Director
- Tonya Weber, Julie Bagshaw, Lily Elder
WSU School of Veterinary Science
Students
- Kadi Compton, Washington State
University Student
- Aaron Johnson Family, Latah County
- EDGE Show Pigs, Bonner County
- Janet Schmidt, WSU Extension, Emeritus
- Judy Floch, UI/Nez Perce County
Extension 4-H Coordinator

***A Special Thank You to all of our
 guest presenters!***

Cost: \$10 per person*

- Please purchase tickets for all youth and adults attending!

Registration: due March 4, 2022

<https://2022swine.eventbrite.com>

- first come-first serve
- Pay by card* or check**
- Scholarships available***

* Card payments are assessed a transaction fee of \$1.26 per ticket purchased.

** If paying by check, indicate this on your Event Brite registration, make check payable to: Benewah County Extension and mail to: 711 W. Jefferson | St. Maries, ID 83861

*** If you need a scholarship please contact us at 208-245-2422 or benewah@uidaho.edu

Questions?

Mark Heitstuman, Extension Director
 WSU/Asotin County (509) 243-2009
 WSU/Whitman County (509) 397-6290

Kathee Tifft, County Chair
 UI/Nez Perce County (208) 799-3096

Judy Floch, 4-H Coordinator
 UI/Nez Perce County (208) 799-3096

Gail Silkwood, County Chair
 UI/Benewah County (208) 245-2422

Sponsored by:

WSU/Asotin County Extension

WSU/Whitman County Extension

UI/Nez Perce County Extension

UI/Benewah County Extension

**Current State of Idaho Covid
Protocols will be followed.*

To enrich education through diversity, the University of Idaho and Washington State University are equal opportunity/affirmative action employers and educational institutions.

Persons with disabilities who require alternative means for communication of program information or reasonable accommodations need to contact Shawna Hobson by March 4, 2022 at nezperce@uidaho.edu or 1239 Idaho Street, Lewiston, ID 83501 or by phone at 208-799-3096.



All individuals attending (including adults) are required to pre-register and pay registration fees no later than March 18, 2022 at:
<https://2022beef.eventbrite.com>



**4-H and FFA Youth
Beef Field Day**

**Saturday,
March 26, 2022 at the
UI Livestock Pavilion**

8:00 am to 3:00 pm

****Most classes are held outside-
Please dress accordingly****

Schedule:

- 8:00 am Registration
8:30 am Welcome
8:45 am Keep Me out of Jail Paperwork-
CVI, Brands, Transport
9:00 am - 12:00 pm
Meat Science and Beef Quality
Feeding & Nutrition of Show Steers
Steer Selection & Livestock Judging
Class
Raising a Healthy Beef Project:
healthcare, vaccinations & parasites
12:00 pm Lunch Provided
1:00 pm - 2:50 pm
Fitting and Showing of Beef
Low Stress Handling of Beef
2:50 pm Evaluations/Q&A

Directions to UI Livestock Pavilion:

If traveling from North, South or East of Moscow, travel West on 6th street to just past Perimeter Drive and the Beef Center. The Animal Pavilion is on your left at the top of the hill.

If traveling from West of Moscow, turn right (South) at Perimeter Drive and Highway 8 (Moscow/Pullman Road). Go straight South (up the hill) through the cattle facilities to the animal pavilion.

Questions the day of the event, please call or text Judy Floch at 509-552-3635.

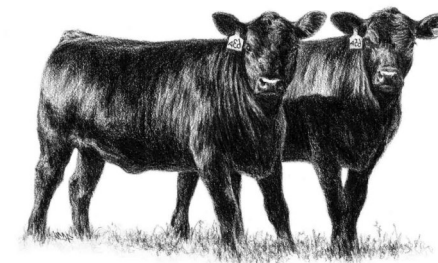
Youth Beef Field Day

March 26, 2022
UI Livestock Pavilion
***Registration is REQUIRED and DUE
March 18, 2022***

Presenters:

- Kerry Sanford, ISDA
Senior Agriculture Investigator
Sandy Kinzer, Idaho State Brand Dept.
Inspector
Kayla Slaybaugh, WSDA
Brand Inspector
Jessie Van Buren & UI Meat Science Team
Jim Church, UI/Idaho County
Extension Chair
Mark Heitstuman, WSU/Asotin County
Extension Director
Lauren Christiansen, DVM
Austin Baker, UI Beef Center
Gail Silkwood, UI/Benewah County
Extension Chair
Kayleen Oliver, UI Beef Feedlot Manager

***A Special Thank You to all of our
guest presenters!***



Cost: \$10 per person*

- Please purchase tickets for all youth and adults attending!

Registration: due March 18, 2022

<https://2022beef.eventbrite.com>

- first come-first serve

- Pay by card or check***

*- Scholarships available****

* Card payments are assessed a transaction fee of \$1.26 per ticket purchased.

** If paying by check, indicate this on your Event Brite registration, make check payable to: Benewah County Extension and mail to: 711 W. Jefferson | St. Maries, ID 83861

*** If you need a scholarship please contact us at 208-245-2422 or benewah@uidaho.edu

Questions?

Mark Heitstuman, Extension Director
WSU/Asotin County (509) 243-2009
WSU/Whitman County (509) 397-6290

Kathee Tifft, County Chair
UI/Nez Perce County (208) 799-3096

Judy Floch, 4-H Coordinator
UI/Nez Perce County (208) 799-3096

Gail Silkwood, County Chair
UI/Benewah County (208) 245-2422