

## Appendix E. Photo documentation of aerial antenna deployments in selected main stem and tributary sites

This Appendix includes photos and site metadata for locations of aerial antennas that were used to monitor radio-tagged adult salmon and steelhead in the lower main stem Columbia River and tributaries from Bonneville Dam to the John Day River in 2013-2014. Many of the sites were also deployed in previous years, but not all sites were deployed in all years. Please see the database: **Receiver\_Deployments\_1996-2014** for annual details. **Appendix B** provides generalized maps of aerial antenna locations at main stem sites, including reservoirs, and in tributaries.

Table E1. Summary of receivers described in this Appendix that were deployed at Columbia River main stem locations other than dams (black text) and in tributaries (blue text).

Receiver location	Receiver code
Bonneville reach	BOG CLR CUR MRA VSP HOO KTR LWS WHR WHS WIN WNU
The Dalles reach	CEL WSM DES OAK SHF
John Day reach	JDR
McNary reach	SN1 SN2
Ice Harbor reach	BFL FHK
L. Monumental reach	PLS TUC
Little Goose reach	
Above Lower Granite	AST CWR SNR

## BOG: Bridge of the Gods



---

<b>LAT/LON:</b>	45.662861° N -121.898722° W
<b>RKM:</b>	238.6
<b>Receiver type:</b>	SRX
<b>Antennas (1):</b>	A1 - yagi
<b>Distance from receiver to antenna:</b>	10 feet
<b>Power source:</b>	Solar

---



## WIN: Wind River mouth



---

**LAT/LON:** 45.721517° N  
-121.788114° W

**RKM:** 249.2

**Receiver type:** SRX

**Antennas (1):** A1 - yagi

**Distance from  
receiver to antenna:** 10 feet

**Power source:** Solar

---



### VSP: Viento State Park (OR shore Bonneville lower pool site)



---

<b>LAT/LON:</b>	45.699890° N -121.668534° W
<b>RKM:</b>	258.8
<b>Receiver type:</b>	SRX
<b>Antennas (1):</b>	A1 - yagi
<b>Distance from receiver to antenna:</b>	10 feet
<b>Power source:</b>	Solar

---



### CUR: Cook-Underwood Road (WA shore Bonneville lower pool site)



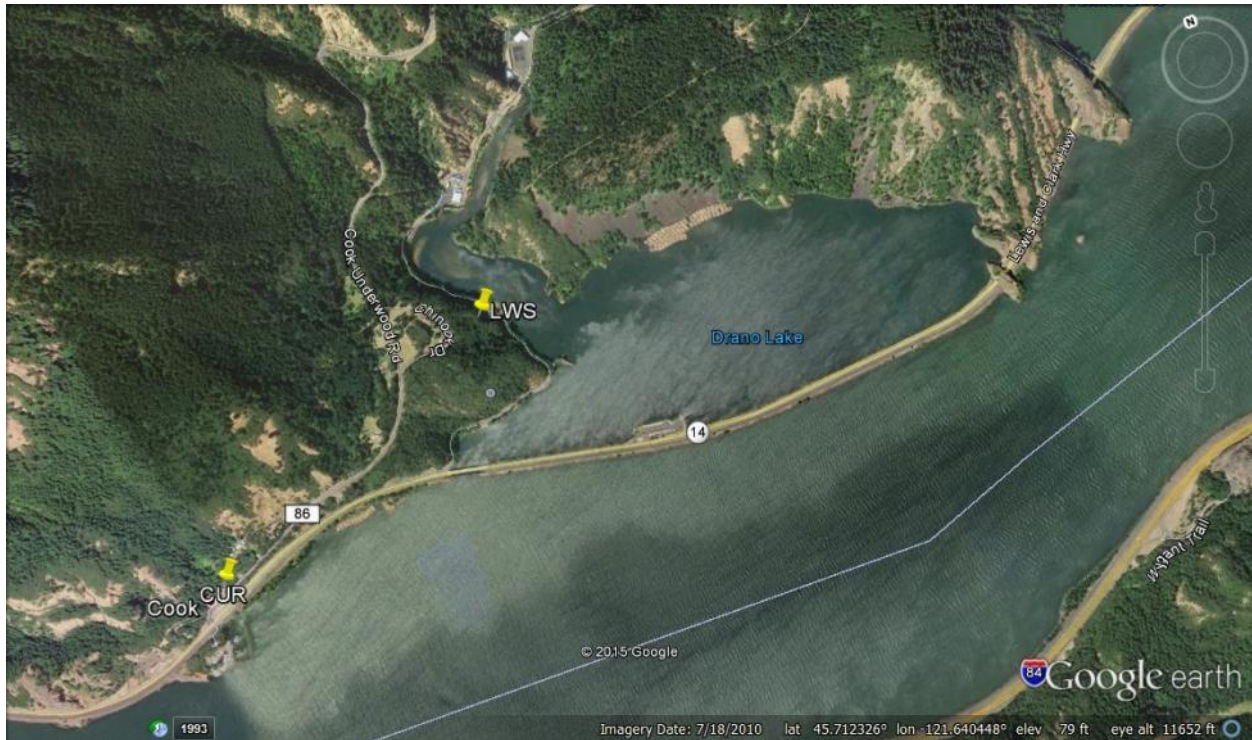
---

<b>LAT/LON:</b>	45.710677° N -121.659393° W
<b>RKM:</b>	260.0
<b>Receiver type:</b>	SRX
<b>Antennas (1):</b>	A1 - yagi
<b>Distance from receiver to antenna:</b>	10 feet
<b>Power source:</b>	Solar

---



## LWS: Little White Salmon/Drano Lake



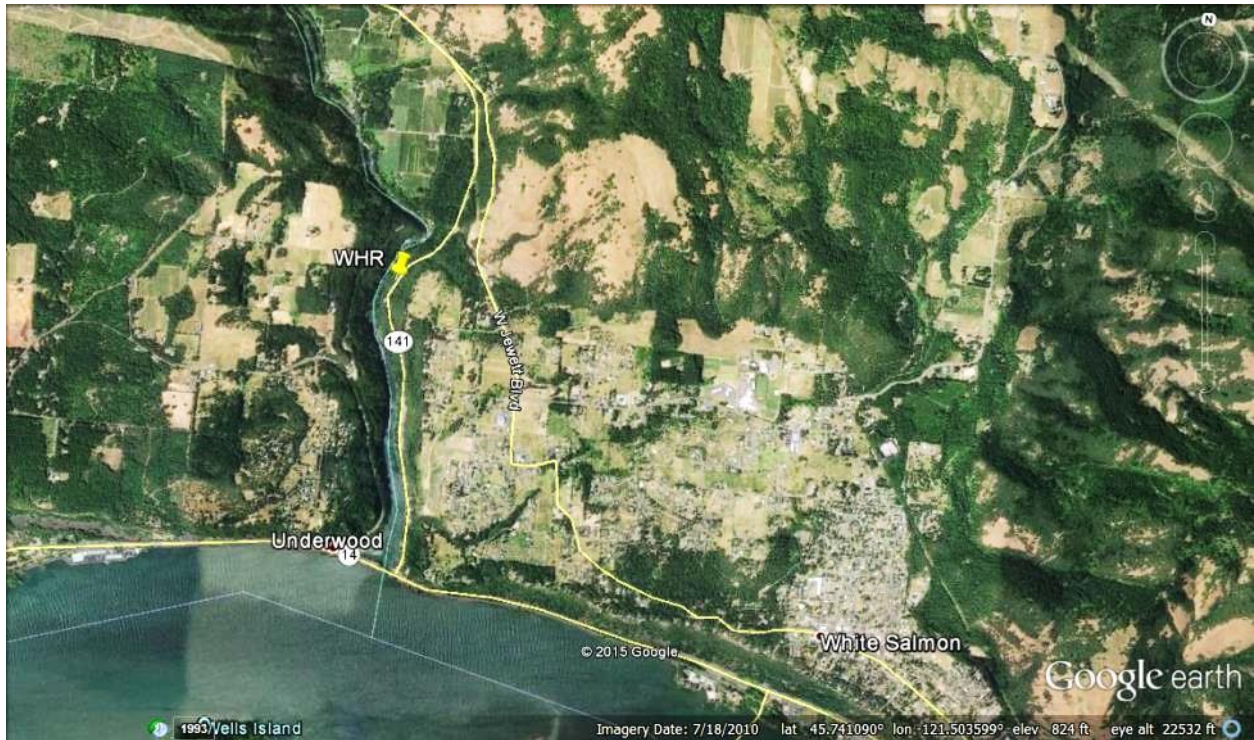
---

<b>LAT/LON:</b>	45.715390° N -121.645561° W
<b>RKM:</b>	261.0
<b>Receiver type:</b>	SRX
<b>Antennas (1):</b>	A1 - yagi
<b>Distance from receiver to antenna:</b>	20 feet
<b>Power source:</b>	Solar

---



### WHR: Lower White Salmon River (downstream of Condit Dam site)



---

**LAT/LON:** 45.744922° N  
-121.523326° W

**RKM:** 270.9

**Receiver type:** SRX

**Antennas (1):** A1 - yagi

**Distance from receiver to antenna:** 20 feet

**Power source:** Battery

---



## WHS: Upper White Salmon River (upstream of Condit Dam site)



---

**LAT/LON:** 45.781502° N  
-121.514477° W

**RKM:** 278.8

**Receiver type:** SRX

**Antennas (1):** A1 - yagi

**Distance from receiver to antenna:** 20 feet

**Power source:** Solar

---





## HOO: Hood River mouth



---

<b>LAT/LON:</b>	45.708614° N -121.505060° W
<b>RKM:</b>	273.8
<b>Receiver type:</b>	SRX
<b>Antennas (1):</b>	A1 - yagi
<b>Distance from receiver to antenna:</b>	30 feet
<b>Power source:</b>	Battery

---



## CLR: Bonneville Pool, Upper 2/3, Washington Side



---

<b>LAT/LON:</b>	45.706280° N -121.326333° W
<b>RKM:</b>	286.1
<b>Receiver type:</b>	SRX
<b>Antennas (1):</b>	A1 – 6-element yagi
<b>Distance from receiver to antenna:</b>	10 feet
<b>Power source:</b>	Solar

---



### MRA: Bonneville Pool, Upper 2/3, Oregon Side



---

<b>LAT/LON:</b>	45.696811 ° N -121.338000 ° W
<b>RKM:</b>	286.2
<b>Receiver type:</b>	SRX
<b>Antennas (1):</b>	A1 – 6-element yagi
<b>Distance from receiver to antenna:</b>	30 feet
<b>Power source:</b>	Solar

---



### KTR: Klickitat River mouth



---

<b>LAT/LON:</b>	45.696445° N -121.291113° W
<b>RKM:</b>	290.3
<b>Receiver type:</b>	SRX
<b>Antennas (1):</b>	A1 – 6-element yagi
<b>Distance from receiver to antenna:</b>	120 feet
<b>Power source:</b>	Hard wired (AC)

---



## WSM: The Dalles Mid Pool, Washington Side



---

<b>LAT/LON:</b>	45.656140° N -120.967693° W
<b>RKM:</b>	325.3
<b>Receiver type:</b>	SRX
<b>Antennas (1):</b>	A1 – 6-element yagi
<b>Distance from receiver to antenna:</b>	10 feet
<b>Power source:</b>	Solar

---



## CEL: The Dalles Mid Pool, Oregon Side



---

<b>LAT/LON:</b>	45.651227° N -120.959920° W
<b>RKM:</b>	325.3
<b>Receiver type:</b>	SRX
<b>Antennas (1):</b>	A1 – 6-element yagi
<b>Distance from receiver to antenna:</b>	10 feet
<b>Power source:</b>	Solar

---



## DES: Deschutes River mouth



---

<b>LAT/LON:</b>	45.630424° N -120.907722° W
<b>RKM:</b>	328.9
<b>Receiver type:</b>	SRX
<b>Antennas (1):</b>	A1 – 6-element yagi
<b>Distance from receiver to antenna:</b>	20 feet
<b>Power source:</b>	Hard wired (AC)

---



## SHF: Deschutes River at Sherars Falls



---

<b>LAT/LON:</b>	45.264541° N -121.021321° W
<b>RKM:</b>	396.3
<b>Receiver type:</b>	SRX
<b>Antennas (1):</b>	A1 – 6-element yagi
<b>Distance from receiver to antenna:</b>	10 feet
<b>Power source:</b>	Battery

---





## JDR: John Day River mouth



---

<b>LAT/LON:</b>	45.723561° N -120.648750° W
<b>RKM:</b>	351.6
<b>Receiver type:</b>	SRX
<b>Antennas (1):</b>	A1 – 6-element yagi
<b>Distance from receiver to antenna:</b>	10 feet
<b>Power source:</b>	Solar

---



**SN2:** Snake River mouth, North shore.



---

<b>LAT/LON:</b>	46°13'16.59"N 119° 1'15.27"W
<b>RKM:</b>	525.4
<b>Receiver type:</b>	SRX
<b>Antennas (1):</b>	A1 - yagi
<b>Distance from receiver to antenna:</b>	5 feet
<b>Power source:</b>	Solar

---



**SN1:** Snake River mouth, South shore.



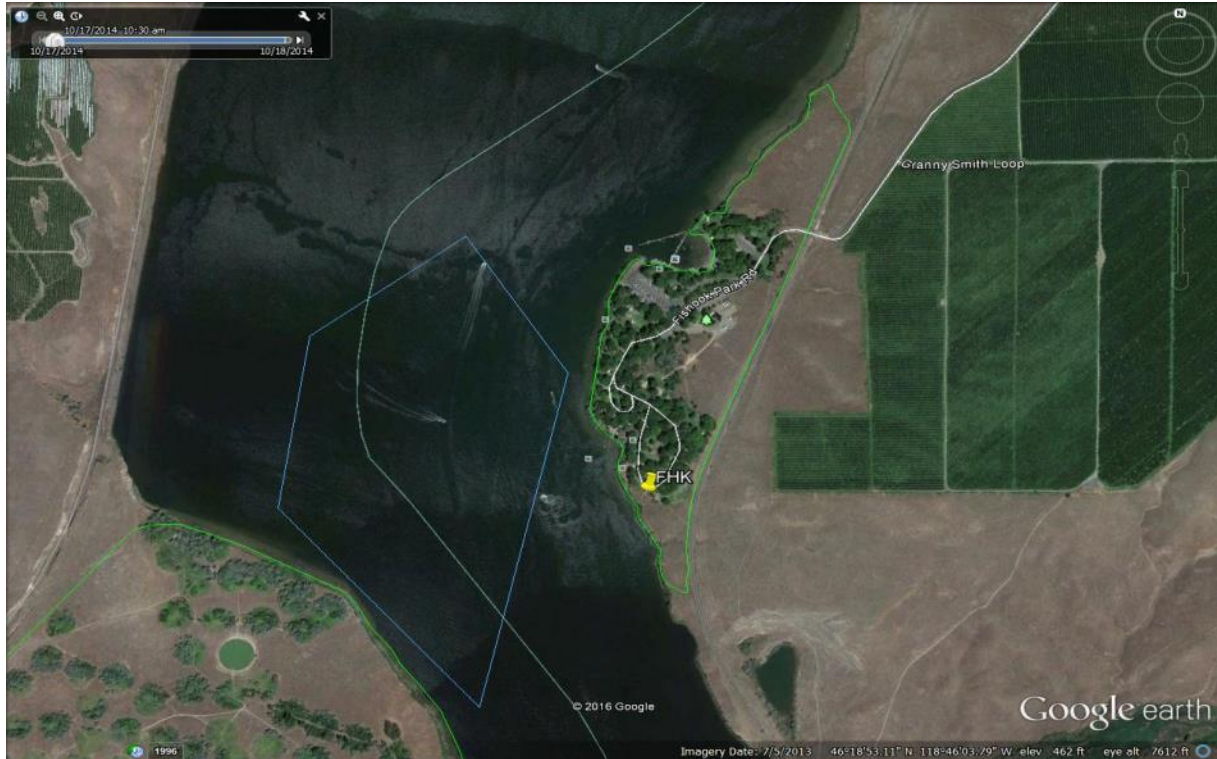
---

<b>LAT/LON:</b>	46°13'9.58"N 119° 0'35.03"W
<b>RKM:</b>	525.5
<b>Receiver type:</b>	SRX
<b>Antennas (1):</b>	A1 - yagi
<b>Distance from receiver to antenna:</b>	5 feet
<b>Power source:</b>	Solar

---



### FHK: Fish Hook Park.



---

<b>LAT/LON:</b>	46°18'44.26"N 118°46'0.86"W
<b>RKM:</b>	549.7
<b>Receiver type:</b>	SRX
<b>Antennas (1):</b>	A1 - yagi
<b>Distance from receiver to antenna:</b>	5 feet
<b>Power source:</b>	Solar

---



**BFL: Big Flat HMU.**



---

<b>LAT/LON:</b>	46°18'35.26"N 118°46'29.57"W
<b>RKM:</b>	549.6
<b>Receiver type:</b>	SRX
<b>Antennas (1):</b>	A1 - yagi
<b>Distance from receiver to antenna:</b>	5 feet
<b>Power source:</b>	Solar

---



## PLS: Palouse River.



---

<b>LAT/LON:</b>	46°36'54.19"N 118°12'1.08"W
<b>RKM:</b>	620.2
<b>Receiver type:</b>	SRX
<b>Antennas (1):</b>	A1 - yagi
<b>Distance from receiver to antenna:</b>	5 feet
<b>Power source:</b>	Solar

---



## TUC: Tucannon River.



---

<b>LAT/LON:</b>	46°32'31.45"N 118° 9'40.88"W
<b>RKM:</b>	621.7
<b>Receiver type:</b>	SRX
<b>Antennas (1):</b>	A1 - yagi
<b>Distance from receiver to antenna:</b>	5 feet
<b>Power source:</b>	Solar

---



### CWR: Clearwater River.



---

<b>LAT/LON:</b>	46°25'31.79"N 116°56'23.60"W
<b>RKM:</b>	753.3
<b>Receiver type:</b>	SRX
<b>Antennas (1):</b>	A1 - yagi
<b>Distance from receiver to antenna:</b>	110 feet
<b>Power source:</b>	Hard wired

---





## AST: Asotin Creek.



---

<b>LAT/LON:</b>	46°20'17.86"N 117° 3'26.11"W
<b>RKM:</b>	755.8
<b>Receiver type:</b>	SRX
<b>Antennas (1):</b>	A1 - yagi
<b>Distance from receiver to antenna:</b>	5 feet
<b>Power source:</b>	Solar

---



**SNR: Snake River.**



---

<b>LAT/LON:</b>	46°18'10.00"N 117° 0'5.72"W
<b>RKM:</b>	762.3
<b>Receiver type:</b>	SRX
<b>Antennas (1):</b>	A1 - yagi
<b>Distance from receiver to antenna:</b>	5 feet
<b>Power source:</b>	Solar

---

