

Un
of

FACULTY SUCCESS SEMINARS



PARTNERING WITH THE U OF I MCCLURE CENTER ON YOUR RESEARCH: *WHY AND HOW*

RESEARCH AND FACULTY DEVELOPMENT FACULTY SUCCESS SEMINAR SERIES

KATHERINE HIMES, PH.D.

DIRECTOR, JAMES A. & LOUISE MCCLURE
CENTER FOR PUBLIC POLICY RESEARCH

*Please keep your microphone
muted until the Q&A session*

Please note that this session is being recorded

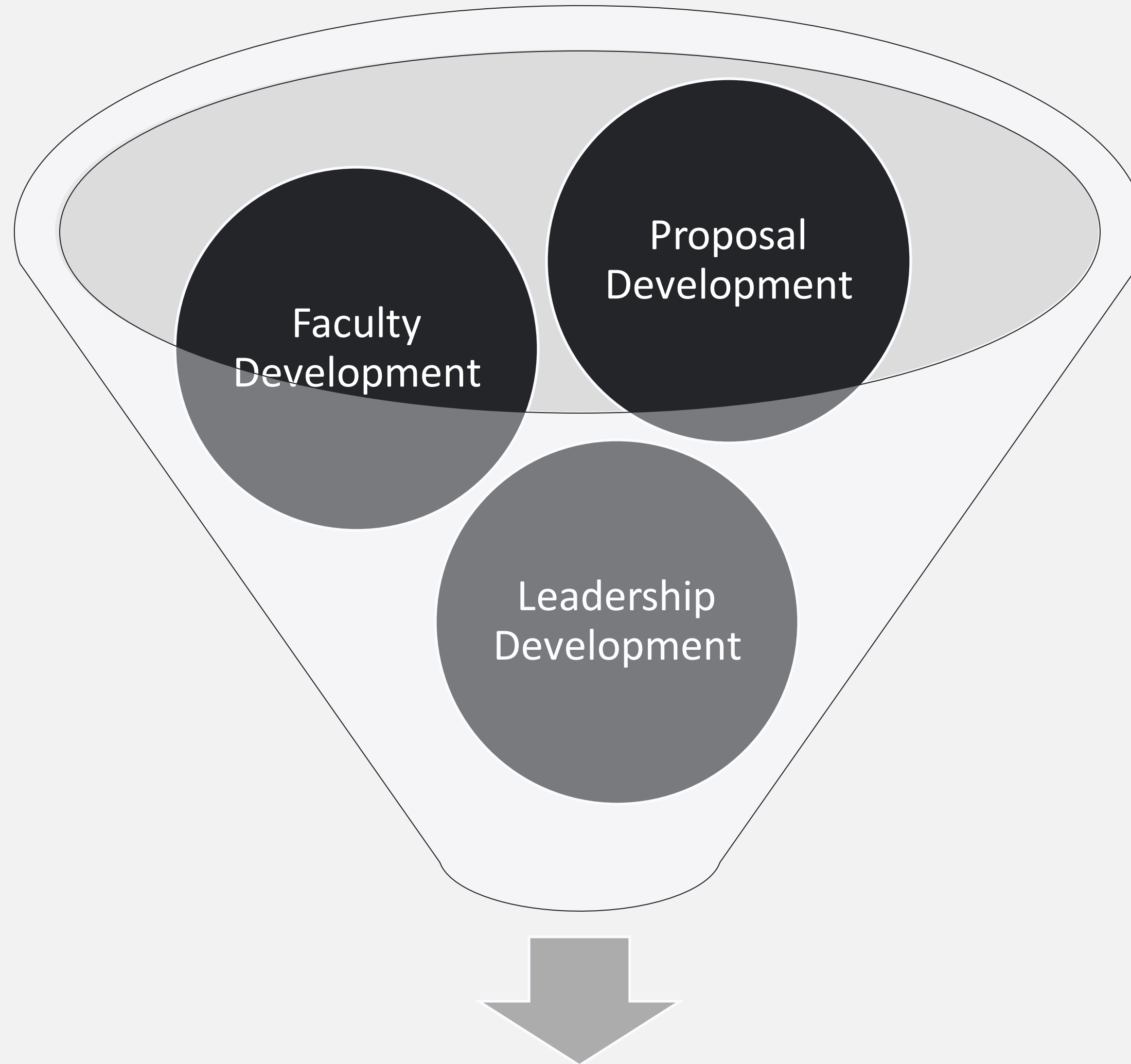
OFFICE OF RESEARCH AND FACULTY DEVELOPMENT (RFD)

I Mission: To provide the resources and services to University of Idaho faculty that enhance their success and productivity in their field of scholarly efforts, with the ultimate goal of growing the U of I's research enterprise

- Alignment with U of I strategic plan
- Across all disciplines



WHAT DOES RFD DO?



Successful, funded research leaders

PROPOSAL DEVELOPMENT SERVICES

Level 0

- Brainstorming
- Strategic planning for submissions

Level 1

- Search for funding opportunities
- Training to use Pivot

Level 2

- Preparing to contact Program Officers
- Assessing “fit” of a proposed idea



Level 3

- Strategize for a resubmission
- Analyze reviews, develop responses

Level 4/5

- Ensuring proposal documents are clear, concise, cohesive, and responsive to the solicitation

Level 6

- Support for large, complex proposals
- Center grants, infrastructure, etc.



REQUEST RFD SERVICES

All services are optional and are granted on a first come, first served basis

FACULTY SUCCESS SEMINARS



FALL 2021

- Sept. 8** Find Funding with Pivot, a Database of Grant Opportunities and More
- Sept. 15** M.J. Murdock Charitable Trust's Partners in Science Program
- Sept. 29** Partnering with the U of I McClure Center on Your Research: Why and How
- Oct. 6** Working with the Research and Faculty Development Team to Enhance the Competitiveness of Your Next Proposal
- Oct. 13** NSF CAREER: Essential Steps Toward Developing a Competitive Proposal
- Oct. 20** Improving Your Grant Competitiveness: Strategies for Resubmission
- Nov. 3** UPDATE: Mountain West Clinical and Translational Research-Infrastructure Network (MW CTR-IN) Funding
- Nov. 10** NSF S-STEM: Strategies for Competitive Proposals

SPRING 2022

- Jan. 19** Find Funding with Pivot, a Database of Grant Opportunities and More
- Jan. 26** Idaho Higher Education Research Council (HERC) Funding Opportunities
- Feb. 9** Lessons Learned from Serving on Proposal Review Panels
- Feb. 23** NSF Research Traineeship (NRT) Program: Strategies for Competitive Proposals
- Mar. 2** NSF CAREER: Getting Started on Your Proposal - *Now is the Time!*
- Mar. 30** First Impressions: Steps to Create a Captivating Proposal Title and First Page
- Apr. 6** Partnering with the U of I Project ECHO on Your Research: Why and How
- Apr. 13** Diversity, Equity, Inclusion, and Belonging: Broadening Participation in Funded Research



scan this to
zoom with us



**WE GUIDE THE DEVELOPMENT
OF COMPETITIVE EXTERNAL
GRANT PROPOSALS**

ZOOM ID
uidaho.zoom.us/j/81586190096

**Office of Research and
Faculty Development**

Email: ored-rfdteam@uidaho.edu
Website: uidaho.edu/orfd

LEADERSHIP DEVELOPMENT OFFERINGS

I Proposal Development Academy: *What You Need to Know Before You Write*

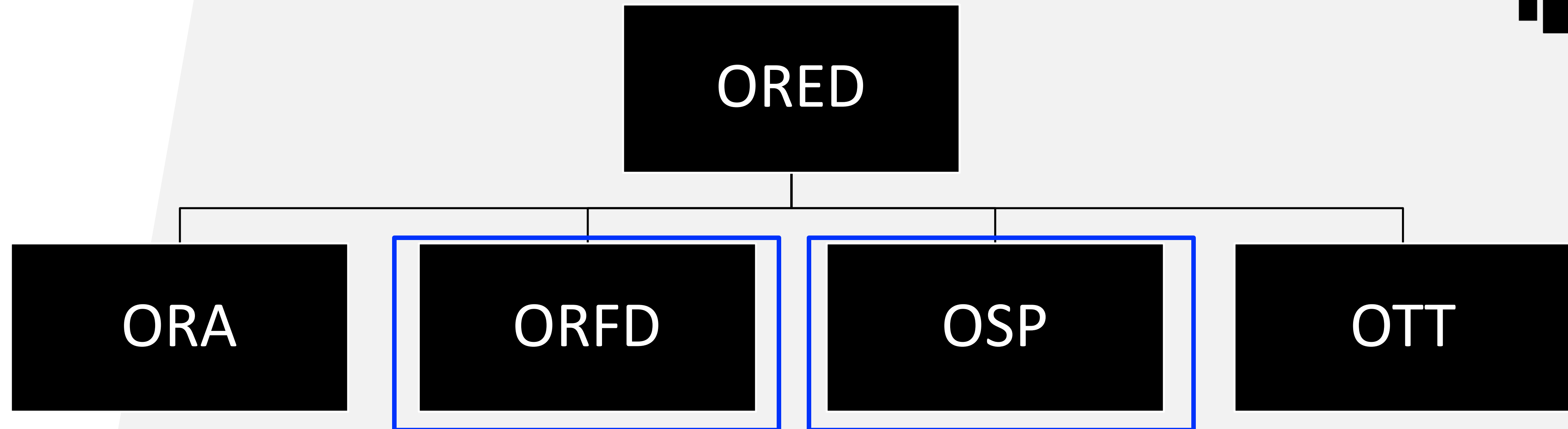
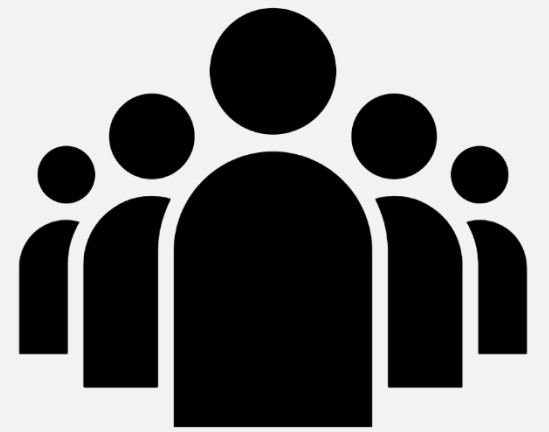
- Enhancing *grant readiness* of early-career faculty members

| Topics |
|--|
| Developing a 5-year Research Funding Plan |
| Crafting A Research Funding Profile; Overview of Pivot |
| Uncovering Sponsors' Grant and Funding Data; Know your funder |
| Enhancing Your Grant Readiness: Contacting Program Officers; Institutional Resources |
| Dissecting Proposal Solicitations for Effective Proposal Writing |
| The Anatomy and Architecture of a Successful Proposal |
| Enhancing Your Grant Readiness: Collaborations, Colleagues, and Connections |
| Beyond the Narrative: Strategies for Supplementary Documents |

- 9-week cohort program in Spring semesters
- Dean nomination to participate



OFFICE OF RESEARCH AND ECONOMIC DEVELOPMENT (ORED)



ORA: Office of Research Assurances

OSP: Office of Sponsored Programs

OTT: Office of Technology Transfer

THE MCCLURE CENTER

I CONDUCTS NONPARTISAN RESEARCH

I INFORMS PUBLIC DIALOGUE AND POLICY

I ENGAGES STUDENTS IN LEARNING ABOUT PUBLIC POLICY MAKING

THE MCCLURE CENTER'S INTERSECTION WITH FACULTY SUCCESS

- I CONNECT SCIENCE AND TECHNOLOGY WITH PUBLIC POLICY
- I INCREASE PUBLIC ENGAGEMENT IN SCIENCE AND TECHNOLOGY
- I FOSTER PARTNERSHIPS BETWEEN AND AMONG DIVERSE GROUPS OF
STAKEHOLDERS

THE MCCLURE CENTER AND NSF BROADER IMPACTS (BI) CRITERION

I USE OF SCIENCE AND TECHNOLOGY TO INFORM PUBLIC POLICY

I INCREASED PUBLIC SCIENTIFIC LITERACY AND PUBLIC
ENGAGEMENT WITH SCIENCE AND TECHNOLOGY

I INCREASED PARTNERSHIPS BETWEEN ACADEMIA, INDUSTRY AND
OTHERS

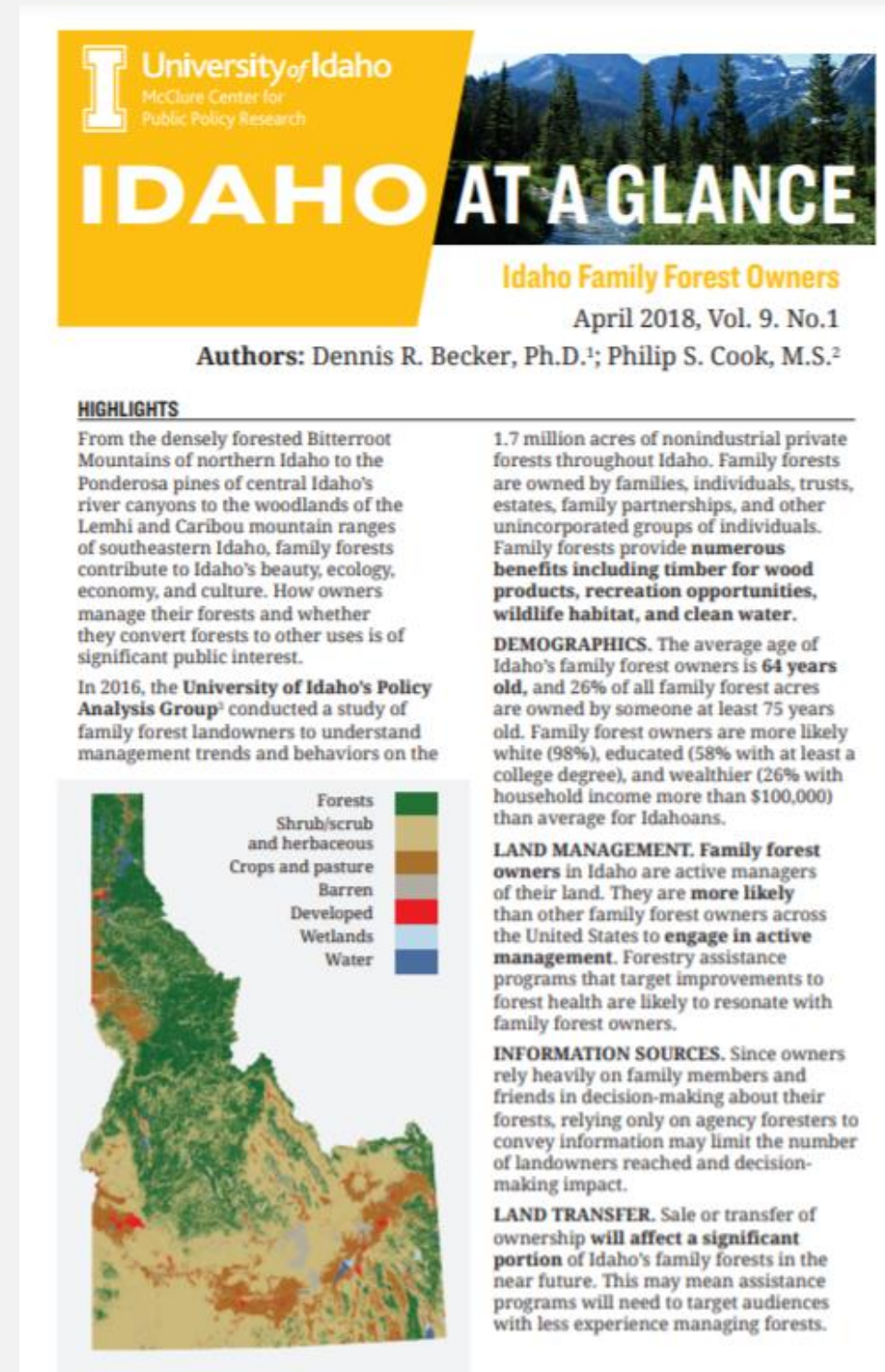
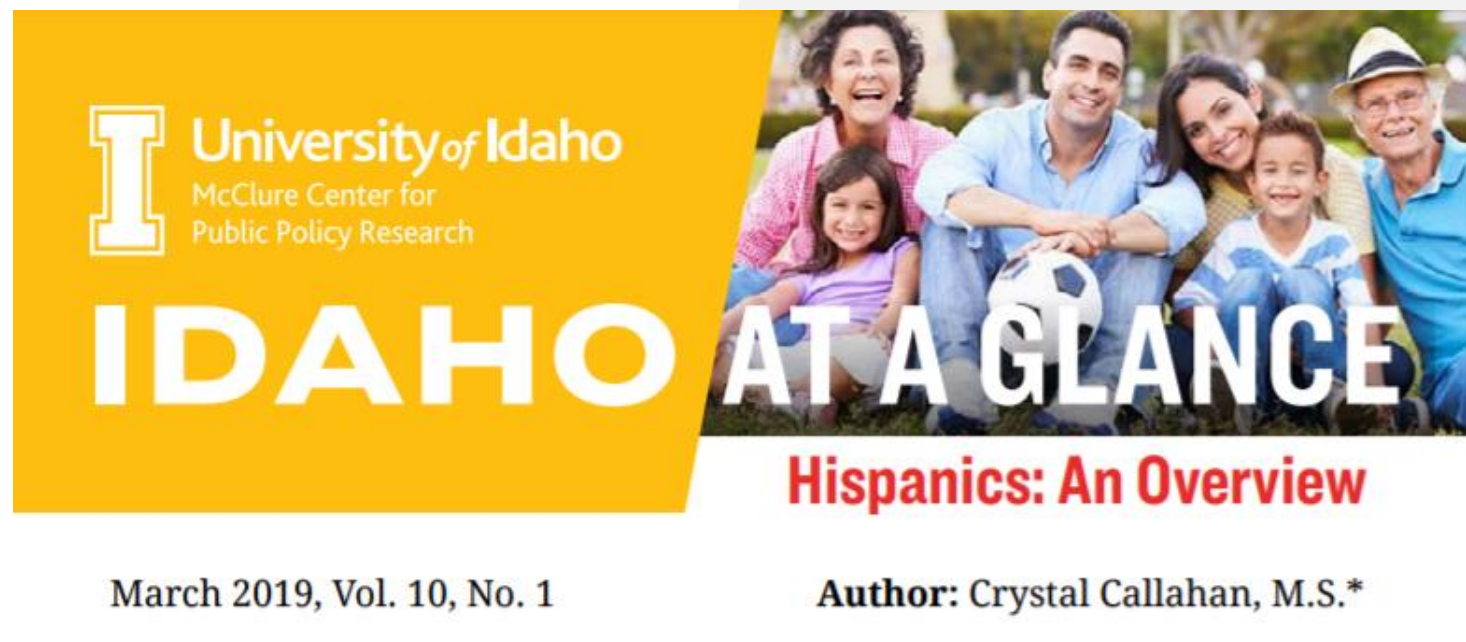
THE MCCLURE CENTER AND NSF BROADER IMPACTS (BI) CRITERION

I USE OF SCIENCE AND TECHNOLOGY TO INFORM PUBLIC POLICY

- *Idaho at a Glance* policy briefs
- Full-length research reports and assessments
- Both translate research findings into actionable knowledge that decision makers can utilize to enact reliable public policy.

THE MCCLURE CENTER AND NSF BROADER IMPACTS (BI) CRITERION

I USE OF SCIENCE AND TECHNOLOGY TO INFORM PUBLIC POLICY



THE MCCLURE CENTER AND NSF BROADER IMPACTS (BI) CRITERION

I INCREASED PUBLIC SCIENTIFIC LITERACY AND PUBLIC ENGAGEMENT WITH SCIENCE AND TECHNOLOGY

- Large lectures
- Policy Pub series
- Topics span public lands, democracy, fire, women in policy, election law, economics, rangelands, policy-law, science diplomacy and more.

THE MCCLURE CENTER AND NSF BROADER IMPACTS (BI) CRITERION

I INCREASED PUBLIC SCIENTIFIC LITERACY AND PUBLIC ENGAGEMENT
WITH SCIENCE AND TECHNOLOGY



THE MCCLURE CENTER AND NSF BROADER IMPACTS (BI) CRITERION

I INCREASED PARTNERSHIPS BETWEEN ACADEMIA, INDUSTRY AND OTHERS

- Convene experts to lead research.
- Assemble advisory boards with leaders from business, governments, nonprofits and Idaho communities.
- A recent example is the Idaho Climate-Economy Impacts Assessment.

THE MCCLURE CENTER AND NSF BROADER IMPACTS (BI) CRITERION

I INCREASED PARTNERSHIPS
BETWEEN ACADEMIA,
INDUSTRY AND OTHERS

🏠 / OFFICE OF THE PRESIDENT / DIRECT REPORTS / MCCLURE CENTER
/ IDAHO CLIMATE-ECONOMY IMPACTS ASSESSMENT

Idaho Climate-Economy Impacts Assessment

The Idaho Climate-Economy Impacts Assessment will connect the latest scientific research on Idaho's changing climate with economic risks and opportunities that impact businesses, residents and local and state economies.

With the participation of researchers representing Idaho universities and colleges, businesses, non-profits, and tribal and other governments, the findings and recommendations from the assessment will allow Idaho to start planning now for a productive, resilient future.

[FAQs](#)

| | |
|-----------------------------|---|
| Research Leads | + |
| Advisory Board | + |
| Executive Committee Members | + |
| Media | + |

Financial Supporters

KEY ELEMENTS

I Science policy

I Collaborative governance

I Science diplomacy

CONTACT INFORMATION

I www.uidaho.edu/mcclurecenter

I @UIMcClure

I katherinehimes@uidaho.edu

I 208-364-4549

FACULTY SUCCESS SEMINARS



FALL 2021

- Sept. 8** Find Funding with Pivot, a Database of Grant Opportunities and More
- Sept. 15** M.J. Murdock Charitable Trust's Partners in Science Program
- Sept. 29** Partnering with the U of I McClure Center on Your Research: Why and How
- Oct. 6** Working with the Research and Faculty Development Team to Enhance the Competitiveness of Your Next Proposal
- Oct. 13** NSF CAREER: Essential Steps Toward Developing a Competitive Proposal
- Oct. 20** Improving Your Grant Competitiveness: Strategies for Resubmission
- Nov. 3** UPDATE: Mountain West Clinical and Translational Research-Infrastructure Network (MW CTR-IN) Funding
- Nov. 10** NSF S-STEM: Strategies for Competitive Proposals

SPRING 2022

- Jan. 19** Find Funding with Pivot, a Database of Grant Opportunities and More
- Jan. 26** Idaho Higher Education Research Council (HERC) Funding Opportunities
- Feb. 9** Lessons Learned from Serving on Proposal Review Panels
- Feb. 23** NSF Research Traineeship (NRT) Program: Strategies for Competitive Proposals
- Mar. 2** NSF CAREER: Getting Started on Your Proposal - *Now is the Time!*
- Mar. 30** First Impressions: Steps to Create a Captivating Proposal Title and First Page
- Apr. 6** Partnering with the U of I Project ECHO on Your Research: Why and How
- Apr. 13** Diversity, Equity, Inclusion, and Belonging: Broadening Participation in Funded Research



scan this to
zoom with us



**WE GUIDE THE DEVELOPMENT
OF COMPETITIVE EXTERNAL
GRANT PROPOSALS**

ZOOM ID
uidaho.zoom.us/j/81586190096

**Office of Research and
Faculty Development**

Email: ored-rfdteam@uidaho.edu
Website: uidaho.edu/orfd

THANK YOU FOR COMING!

QUESTIONS?

