

**FACULTY
SUCCESS
SEMINARS**



**University
of Idaho**

*Please keep your microphone
muted until the Q&A session*

PARTNERING WITH PROJECT ECHO IDAHO ON YOUR RESEARCH: WHY AND HOW

**RESEARCH AND FACULTY DEVELOPMENT
FACULTY SUCCESS SEMINAR SERIES**

Lachelle Smith, MPP Director ECHO Idaho, WWAMI

Rusty Baker, PhD, DAAT, AT, CMP, PRT-c®

Associate Director of Medical Research, WWAMI

Please note that this session is being recorded

OFFICE OF RESEARCH AND FACULTY DEVELOPMENT (RFD)



I Mission: To provide the resources and services to University of Idaho faculty that enhance their success and productivity in their field of scholarly efforts, with the ultimate goal of growing the U of I's research enterprise

- Alignment with U of I strategic plan
- Across all disciplines



OFFICE OF RESEARCH AND FACULTY DEVELOPMENT (RFD)



Carly Cummings

Director



208-885-1058

ccummings@uidaho.edu

Kendra Mingo

Executive Proposal Development Specialist



208-885-1178

kmingo@uidaho.edu

Laura Heinse

Senior Proposal Development Specialist



208-885-2879

lheinse@uidaho.edu

Wendy Hessler

Proposal Development Specialist



208-885-7097

whessler@uidaho.edu

Nancy Holmes

Proposal Development Specialist

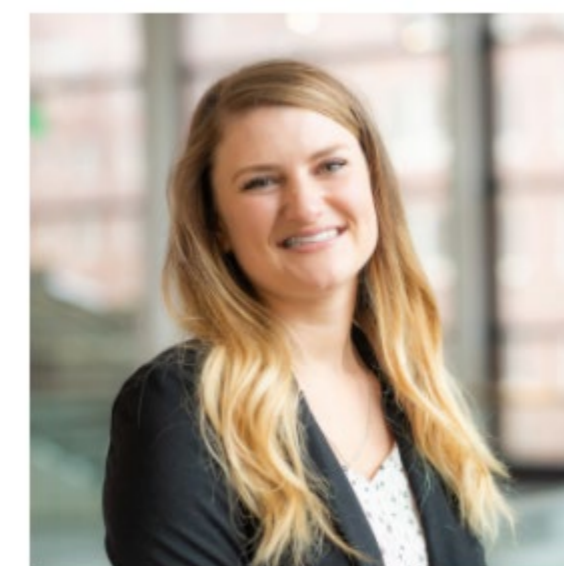


208-885-5996

nholmes@uidaho.edu

Julia Hanley

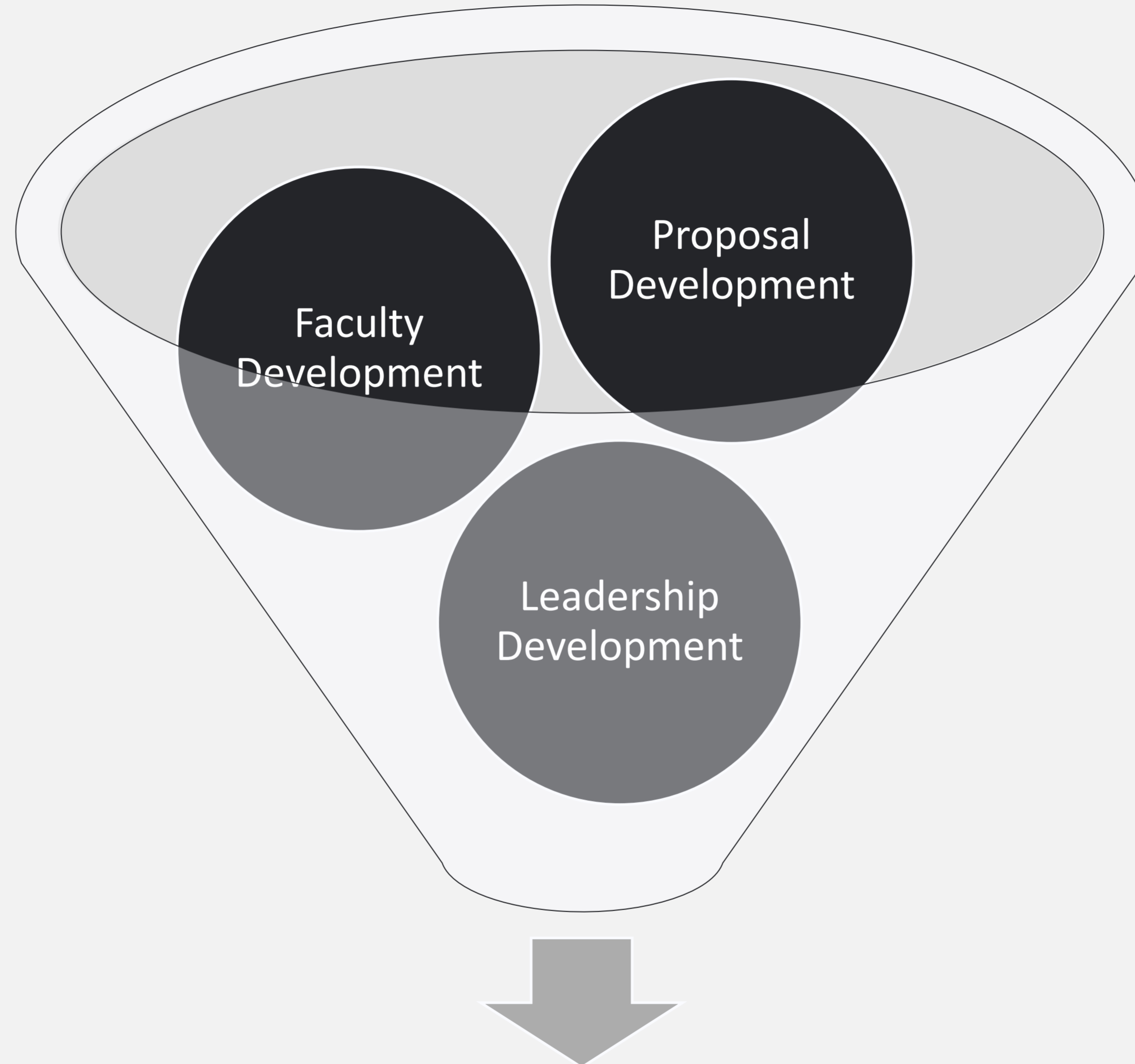
Proposal and Systems Manager



208-885-6689

josborne@uidaho.edu

WHAT DOES RFD DO?



Successful, funded research leaders

PROPOSAL DEVELOPMENT SERVICES



Level 0

- Brainstorming
- Strategic planning for submissions

Level 1

- Search for funding opportunities
- Training to use Pivot

Level 2

- Preparing to contact Program Officers
- Assessing “fit” of a proposed idea



Level 3

- Strategize for a resubmission
- Analyze reviews, develop responses

Level 4/5

- Ensuring proposal documents are clear, concise, cohesive, and responsive to the solicitation

Level 6

- Support for large, complex proposals
- Center grants, infrastructure, etc.



REQUEST RFD SERVICES

All services are optional and are granted on a first come, first served basis

FACULTY DEVELOPMENT

FACULTY SUCCESS SEMINARS



FALL 2021

- Sept. 8** Find Funding with Pivot, a Database of Grant Opportunities and More
- Sept. 15** M.J. Murdock Charitable Trust's Partners in Science Program
- Sept. 29** Partnering with the U of I McClure Center on Your Research: Why and How
- Oct. 6** Working with the Research and Faculty Development Team to Enhance the Competitiveness of Your Next Proposal
- Oct. 13** NSF CAREER: Essential Steps Toward Developing a Competitive Proposal
- Oct. 20** Improving Your Grant Competitiveness: Strategies for Resubmission
- Nov. 3** UPDATE: Mountain West Clinical and Translational Research-Infrastructure Network (MW CTR-IN) Funding
- Nov. 10** NSF S-STEM: Strategies for Competitive Proposals

SPRING 2022

- Jan. 19** Find Funding with Pivot, a Database of Grant Opportunities and More
- Jan. 26** Idaho Higher Education Research Council (HERC) Funding Opportunities
- Feb. 9** Lessons Learned from Serving on Proposal Review Panels
- Feb. 23** NSF Research Traineeship (NRT) Program: Strategies for Competitive Proposals
- Mar. 2** NSF CAREER: Getting Started on Your Proposal - *Now is the Time!*
- Mar. 30** First Impressions: Steps to Create a Captivating Proposal Title and First Page
- Apr. 6** Partnering with the U of I Project ECHO on Your Research: Why and How
- Apr. 13** Diversity, Equity, Inclusion, and Belonging: Broadening Participation in Funded Research



scan this to
zoom with us



**WE GUIDE THE DEVELOPMENT
OF COMPETITIVE EXTERNAL
GRANT PROPOSALS**

ZOOM ID
uidaho.zoom.us/j/81586190096

**Office of Research and
Faculty Development**

Email: ored-rfdteam@uidaho.edu
Website: uidaho.edu/orfd

LEADERSHIP DEVELOPMENT OFFERINGS



I Proposal Development Academy: *What You Need to Know Before You Write*

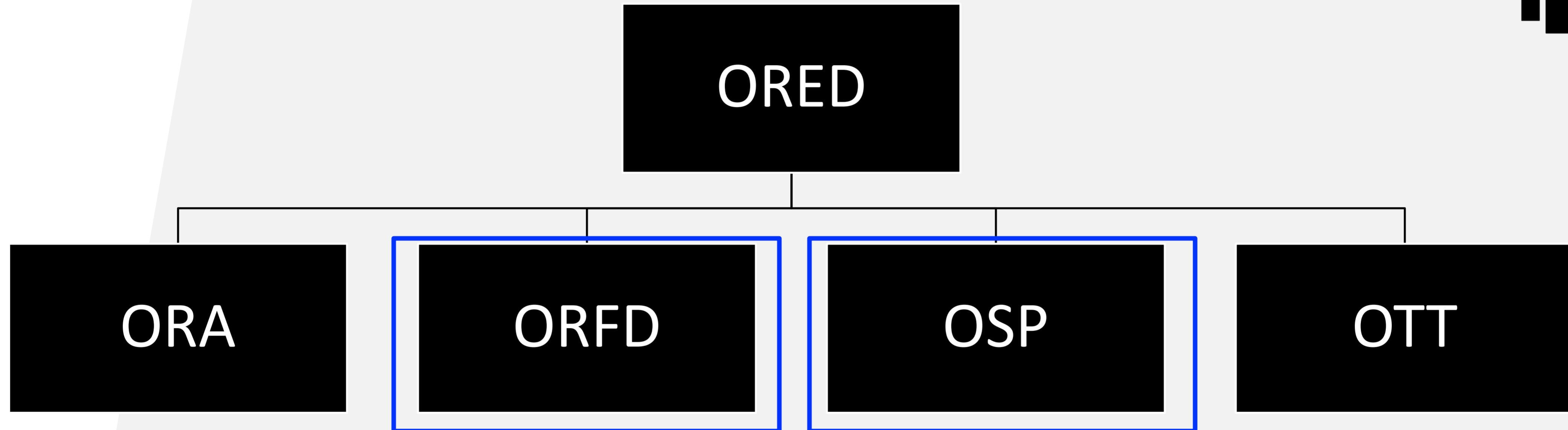
- Enhancing *grant readiness* of early-career faculty members

Topics
Developing a 5-year Research Funding Plan
Crafting A Research Funding Profile; Overview of Pivot
Uncovering Sponsors' Grant and Funding Data; Know your funder
Enhancing Your Grant Readiness: Contacting Program Officers; Institutional Resources
Dissecting Proposal Solicitations for Effective Proposal Writing
The Anatomy and Architecture of a Successful Proposal
Enhancing Your Grant Readiness: Collaborations, Colleagues, and Connections
Beyond the Narrative: Strategies for Supplementary Documents

- 9-week cohort program in Spring semesters
- Dean nomination to participate



OFFICE OF RESEARCH AND ECONOMIC DEVELOPMENT (ORED)



ORA: Office of Research Assurances

OSP: Office of Sponsored Programs

OTT: Office of Technology Transfer



University of Idaho
WWAMI Medical Education



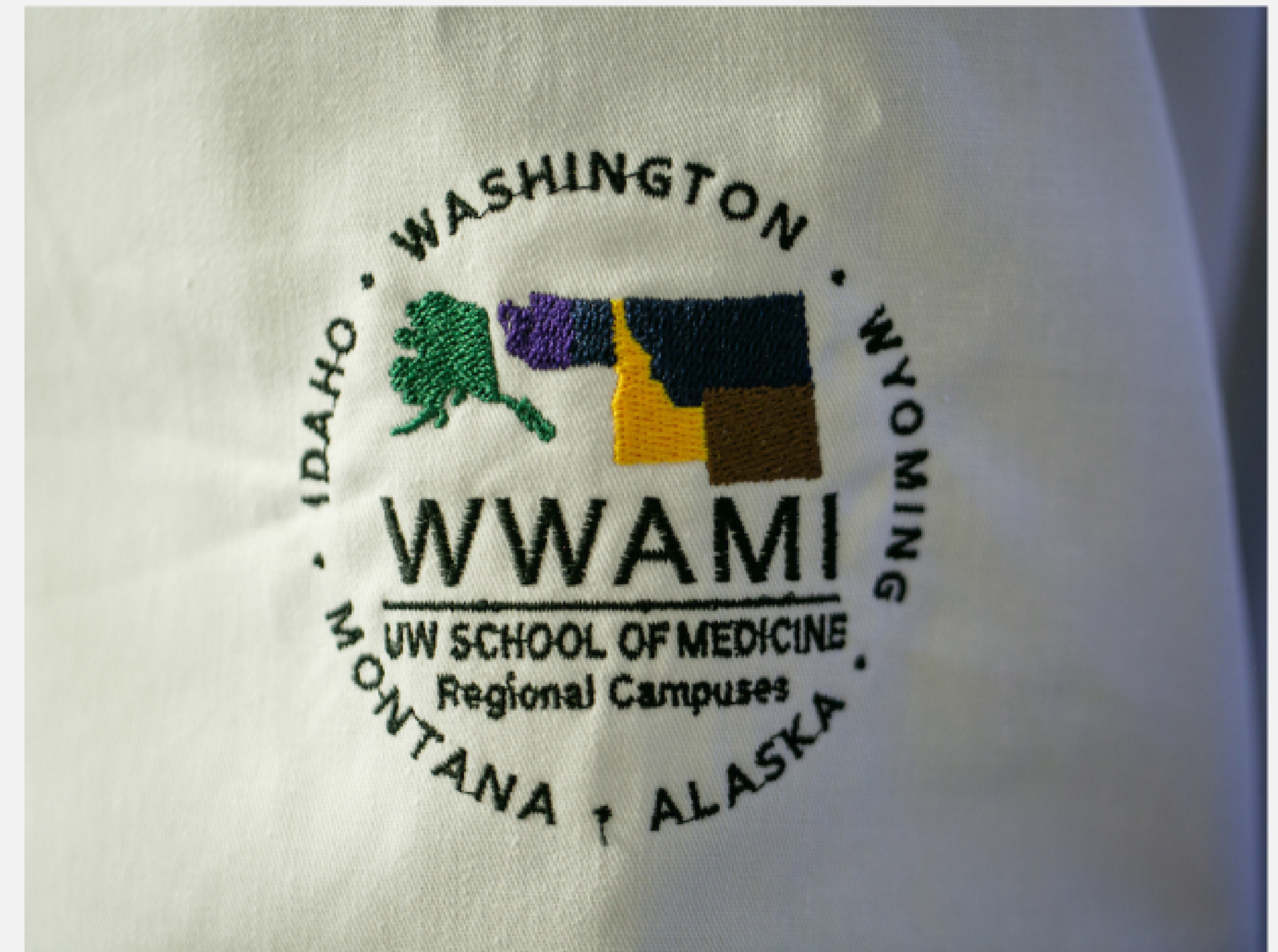
**IDAHO WWAMI
FUTURE PHYSICIANS!**

WWAMI MEDICAL EDUCATION PROGRAM



Five-state partnership with University of Washington School of Medicine

- One of the nation's top schools for training physicians.
- UWSOM **NO. 1** for primary care in 2022 (U.S. News & World Report).
 - Ranked top primary-care medical school 26 times since the category introduced in 1995
- Ranked **NO. 2** for family medicine training
 - Listed as one of the top two medical schools for family medicine training for 29 years.



IDAHO

WWAMI Program Site Map

2021 - 2022



Moscow, ID



McCall, ID



Jerome, ID

PHYSICIAN PIPELINE

K-12

```
graph TD; A[K-12] --> B[College (4 years)]; B --> C[Medical School (4 years)]; C --> D[Residency/Fellowship (3-7 years)]; D --> E[Practicing Physician];
```

College (4 years)

Medical School (4 years)

Residency/Fellowship (3-7 years)

Practicing Physician

Takeaways – For Idaho By Idaho



Legacy

- 50 years educating Idaho students
- 890+ graduates
- High retention for State of Idaho



Local

- Students are all Idaho residents
- Idaho's only publicly-funded medical school
- 160 Idahoans enrolled, 80 on campus



Long Reach

- Statewide impact with clinical training
- AHEC and ECHO help support Idaho healthcare professionals
- Office of Underserved and Rural Medical Research



Idaho Health Workforce Data

35%

of Idaho's residents live in underserved counties.

More than 2,000 people per Primary Care Provider. (2018, AAFP Workforce Report)

98.7%

of Idaho is a Primary Care Shortage Area.

(2021, IDHW)

100%

of Idaho is designated a Mental Health Professional Shortage Area.

(2021, IDHW)



Project ECHO - Idaho

A virtual community for Idaho's healthcare workforce



People need access to specialty care for complex conditions.



There aren't enough specialists to treat everyone, especially in rural areas.

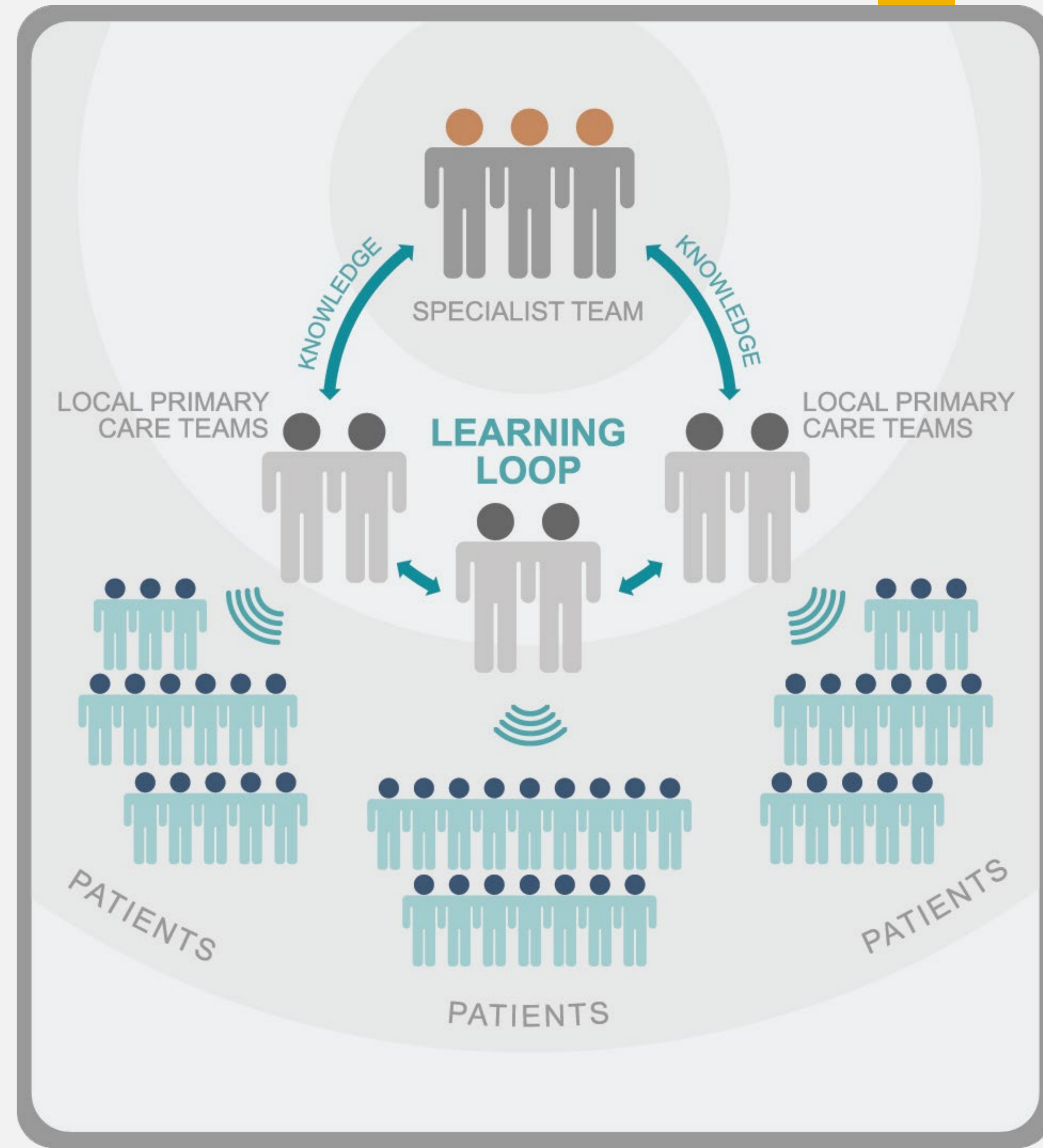


ECHO® trains primary care clinicians to provide specialty care services.



Patients get the right care, in the right place, at the right time.

ECHO MOVES KNOWLEDGE, NOT PATIENTS





Sanjeev Arora, MD, MACP, FACG,
founder and director of Project
ECHO

*"Patients should not be dying from
curable diseases because they don't
have access to the right providers."*

<https://www.youtube.com/watch?v=41SzS9Ffpt4&t=867s>



<https://hsc.unm.edu/echo/partner-portal/data-marketplace/interactive-dashboards/>

2018

2019

2020

2021

2022



1. Opioids, Pain & Substance Use Disorders (SUD)

2. Behavioral Health in Primary Care

3. X-Waiver Training*

4. COVID-19

5. Perinatal SUD

6. Syphilis in Pregnancy

8. Counseling Techniques for SUD

9. Hepatitis C & Liver Care

7. COVID-19 Nursing Home Safety

12. Pediatric Autism

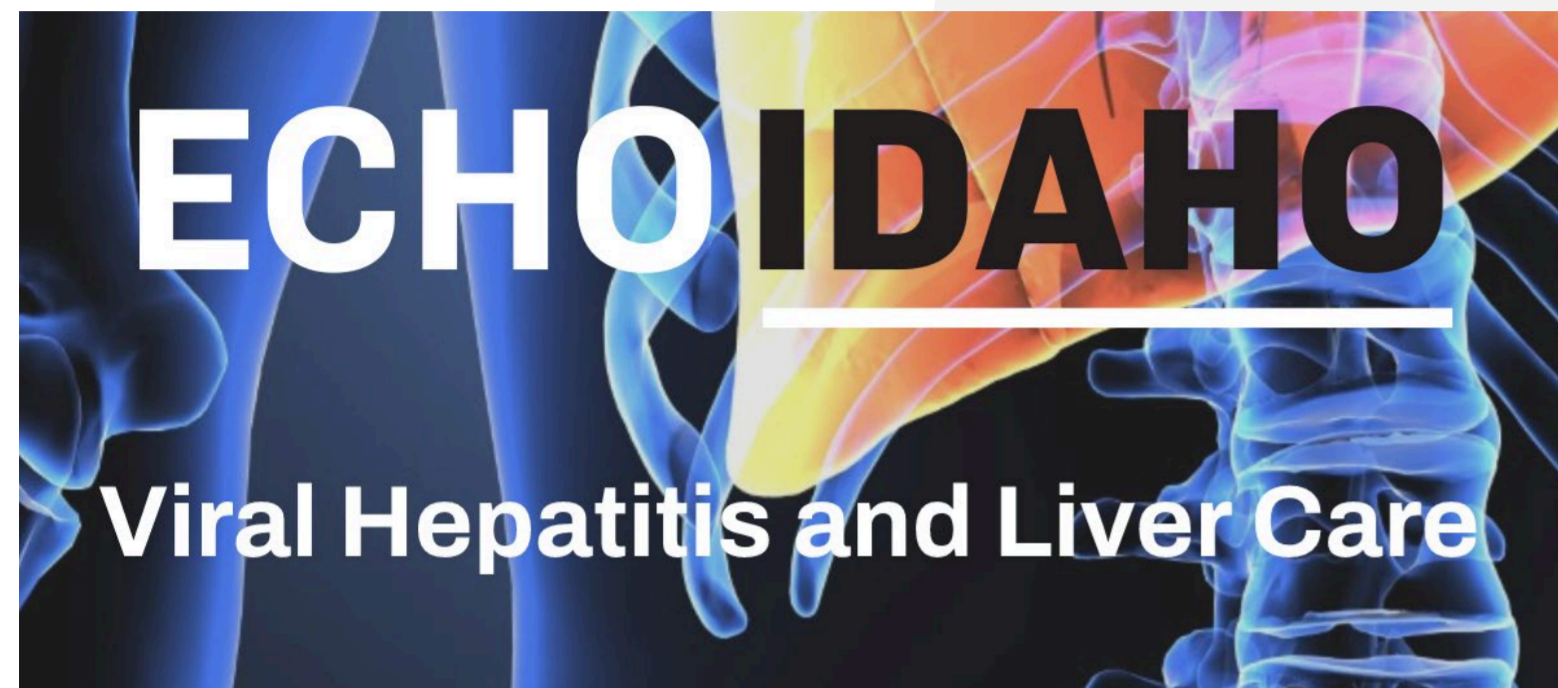
10. Pediatric Behavioral Health

13. Medication for OUD Office Hrs*

11. Something for the Pain Podcast*

* Special program

Current ECHO Idaho Series



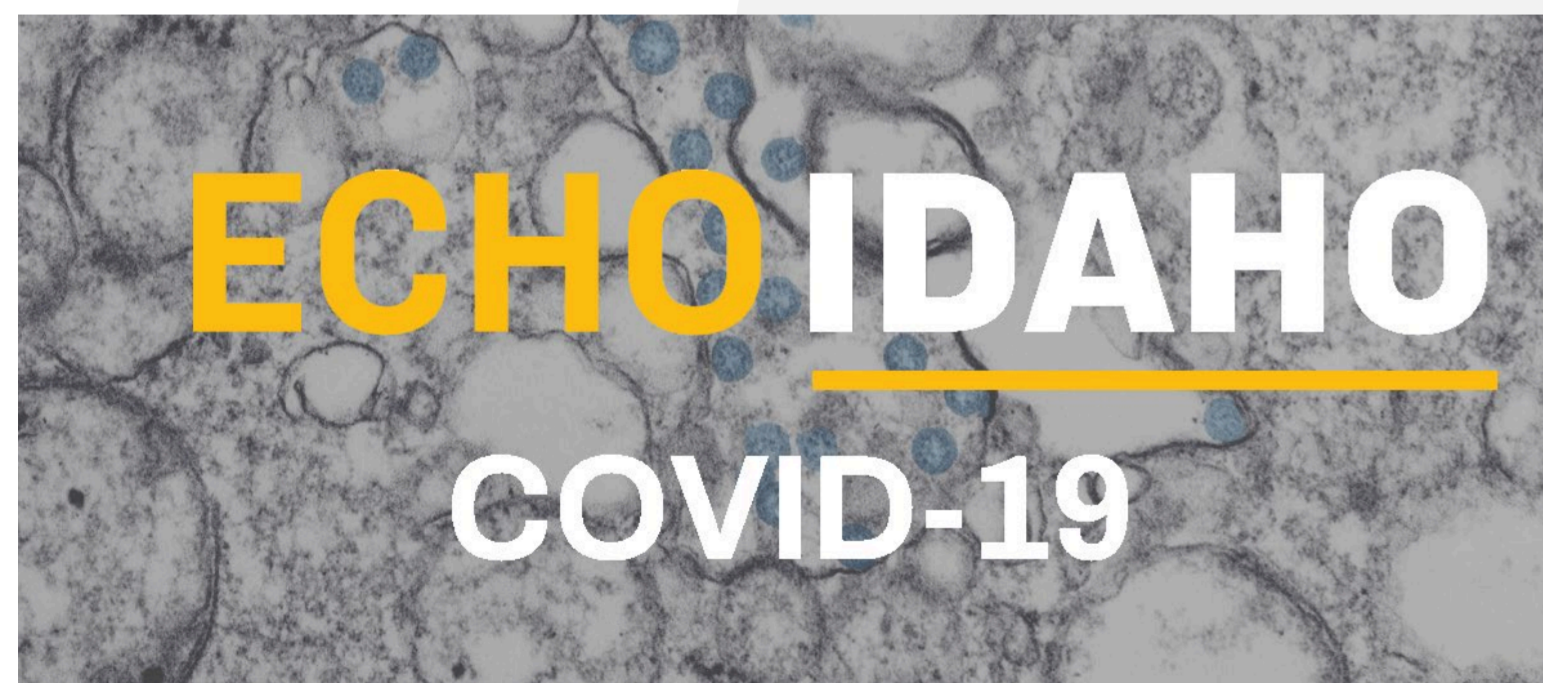
2nd / 4th Mondays
11 a.m. to noon Pacific time



1st / 3rd Thursdays
11 a.m. to Noon Pacific time



1st / 3rd Wednesdays
11 a.m. to noon Pacific time



1st / 3rd Tuesdays
11 a.m. to noon Pacific time



2nd / 4th Thursdays
11:15 a.m. to 12:15 p.m. Pacific time



2nd / 4th Thursdays
Noon to 1 p.m. Pacific time

What to Expect During ECHO Sessions

1. Didactic Presentation

- Lecture and questions

2. Case Presentation

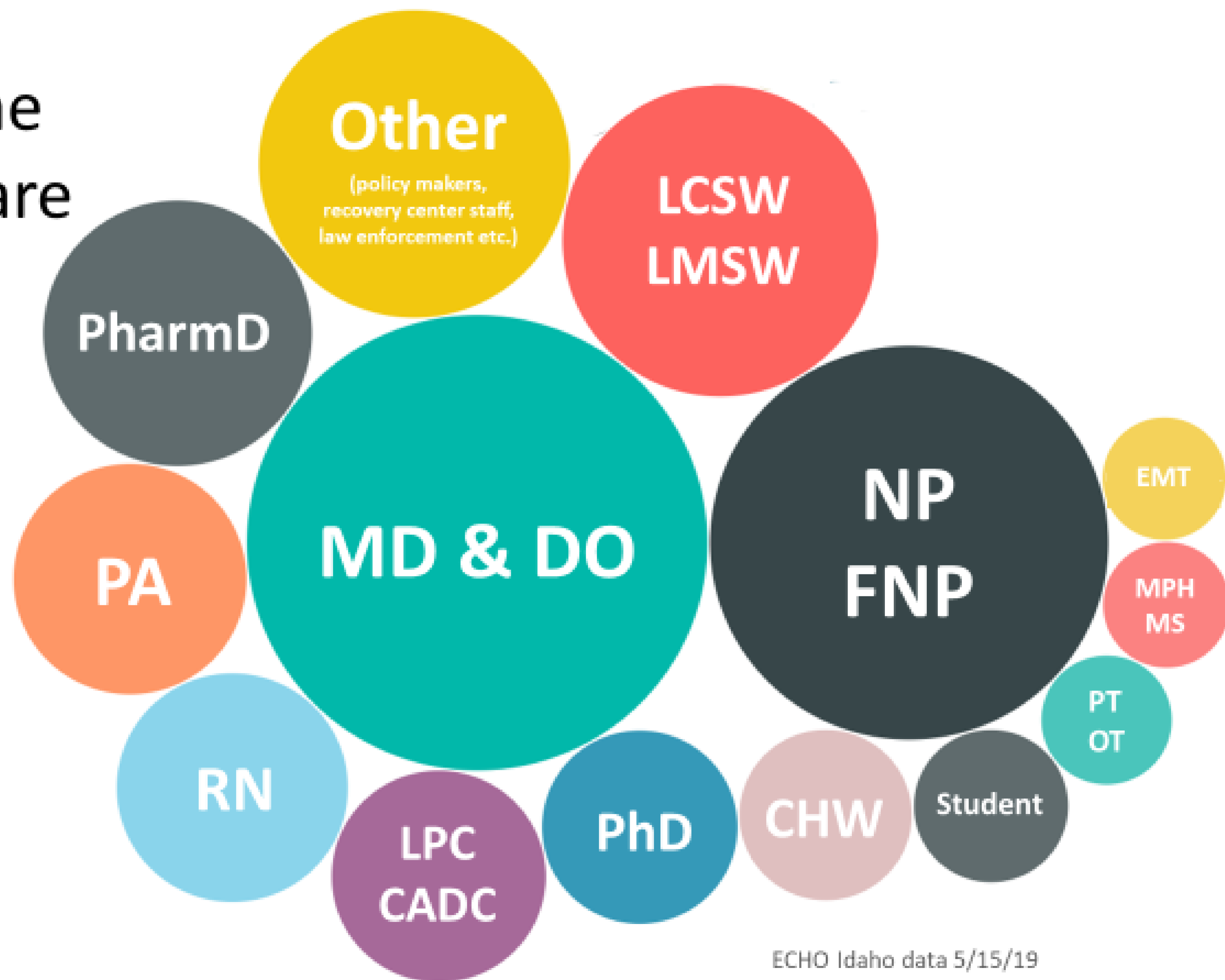
- Real patient case presented by participant for feedback and discussion



How Does it Work?

- For healthcare professionals and behavioral health specialists
- Register at www.uidaho.edu/echo
- Receive email announcements with session info and resources
- Join sessions from your phone, tablet, laptop, computer
- Take surveys to claim free CME/CE
- Session recordings available for anyone online:
www.uidaho.edu/echo

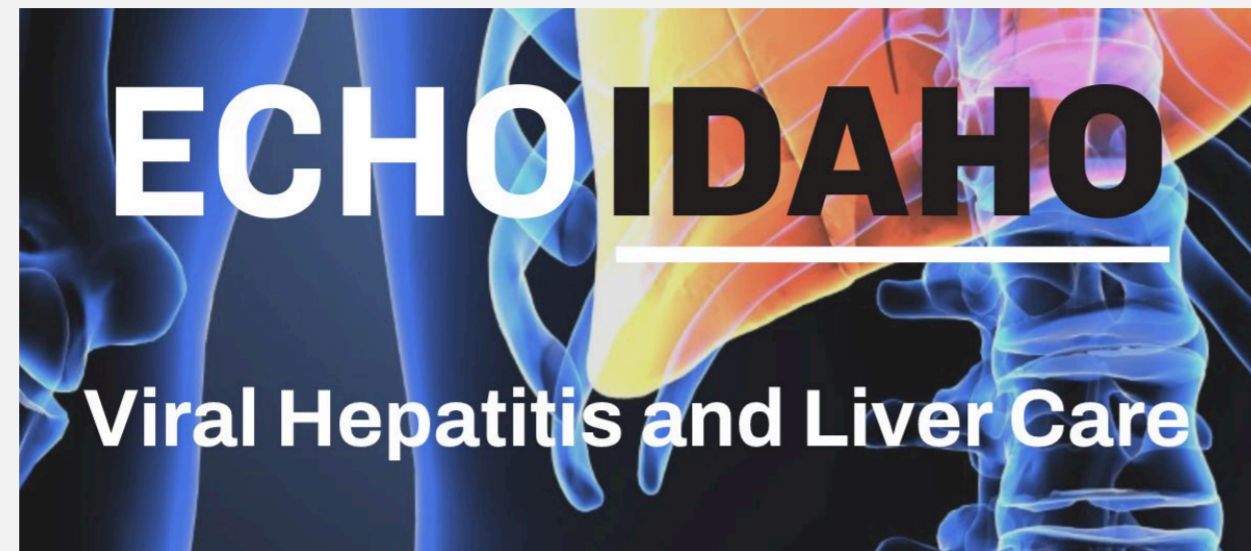
ECHO is for the
entire healthcare
team



Attendances by credential

ECHO Idaho data 5/15/19

NEXT WEEK at ECHO IDAHO



HCV Treatment, Part II

Monday, April 11
Noon to 1 p.m. Mountain time



OPIOIDS: CDC updates on Opioid Prescribing

Thursday, April 14
12:15 to 1:15 p.m. Mountain time



MOUD Office Hours

Thursday, April 14
12:30 to 1:30 p.m. Mountain time



Anxiety, Autism and Medication Use

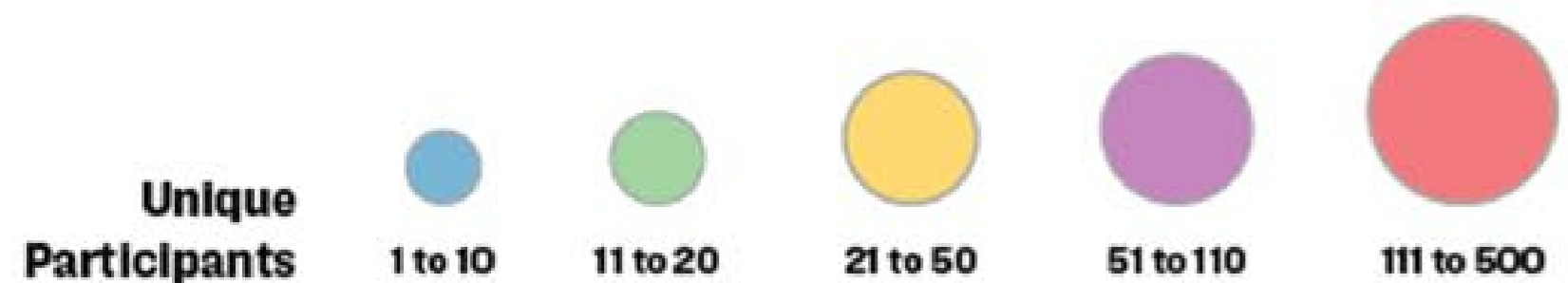
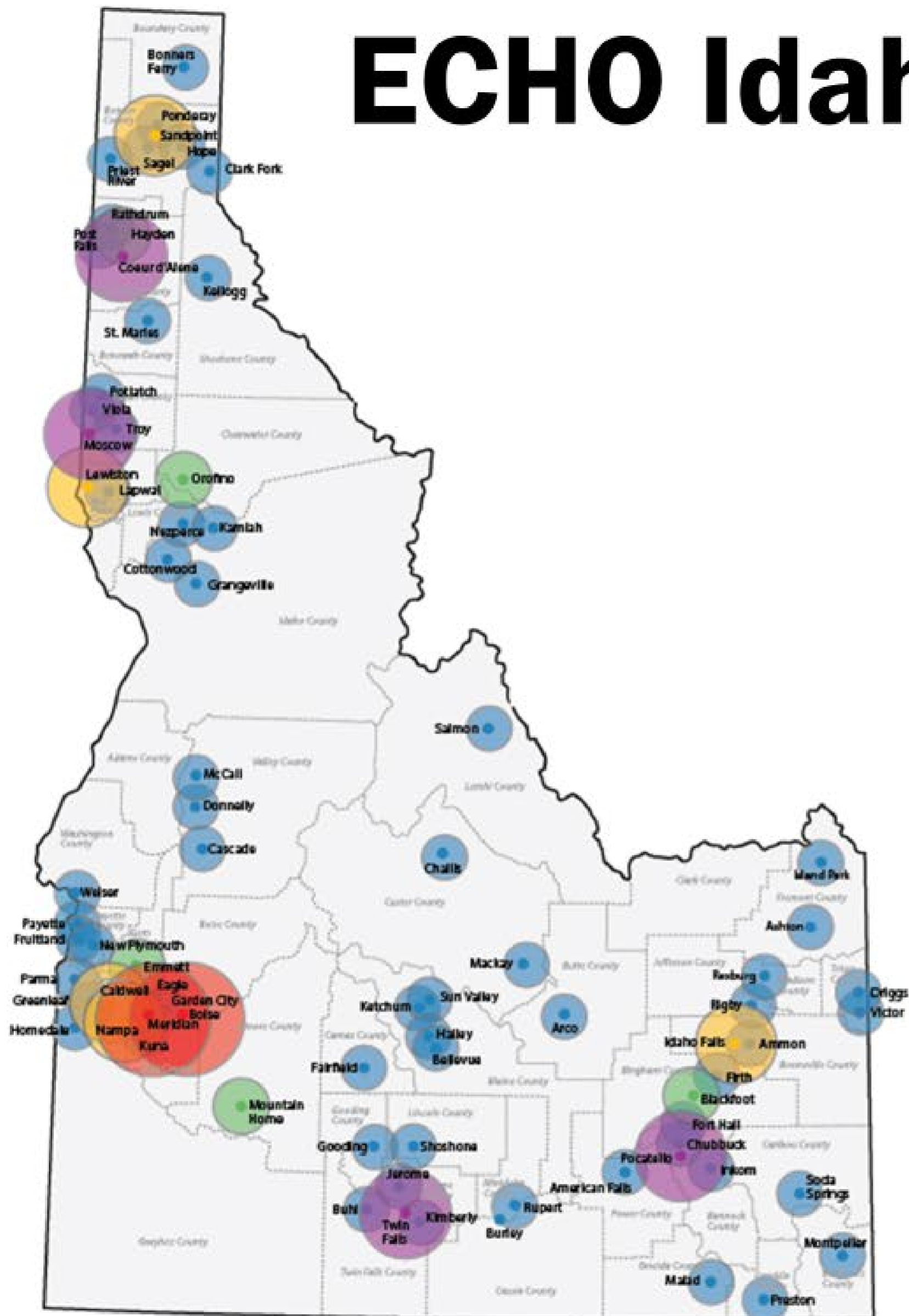
Thursday, April 14
1 - 2 p.m. Mountain time



University of Idaho
WWAMI Medical Education



ECHO Idaho's Growth 2018-2021



	2018	2019	2020	2021
Clinicians	178	455	1,623	1,442
Organizations	105	197	623	583
Municipalities	51	70	149	77
Counties	26	34	42	38
CME Hours	603	1,228	6,283	4,166
ECHO Sessions	28	4	95	169
Patient Case Reviews	23	44	60	91

Doing more for Idaho



PATIENT

- Right Care
- Right Place
- Right Time

PROVIDER

- Acquire New Knowledge
- Treat More Patients
- Build Community of Practice

COMMUNITY

- Reduce Disparities
- Retain Providers
- Keep Patients Local

SYSTEM

- Increase Access
- Improve Quality
- Reduce Cost

VISION & DIRECTION FOR ECHO IDAHO



Improve healthcare for Idahoans by providing ECHO mentorship across 10 programs to 2,500 healthcare professionals over the next three years.

- Meet community needs – by *Idaho for Idaho*
- Enhance the knowledge and capacity of Idaho's healthcare workforce
- Sustain a steady increase of clinician participants
- Conduct research and evaluation to advance medical knowledge and continuously improve programming
- Diversify financial support to sustain and expand operations

Idaho Office of Underserved and Rural Medical Research



Mission: Improve the health of Idaho's underserved and rural communities through the purposeful integration of medical education, research and service to advance clinical practice and patient care in our state.



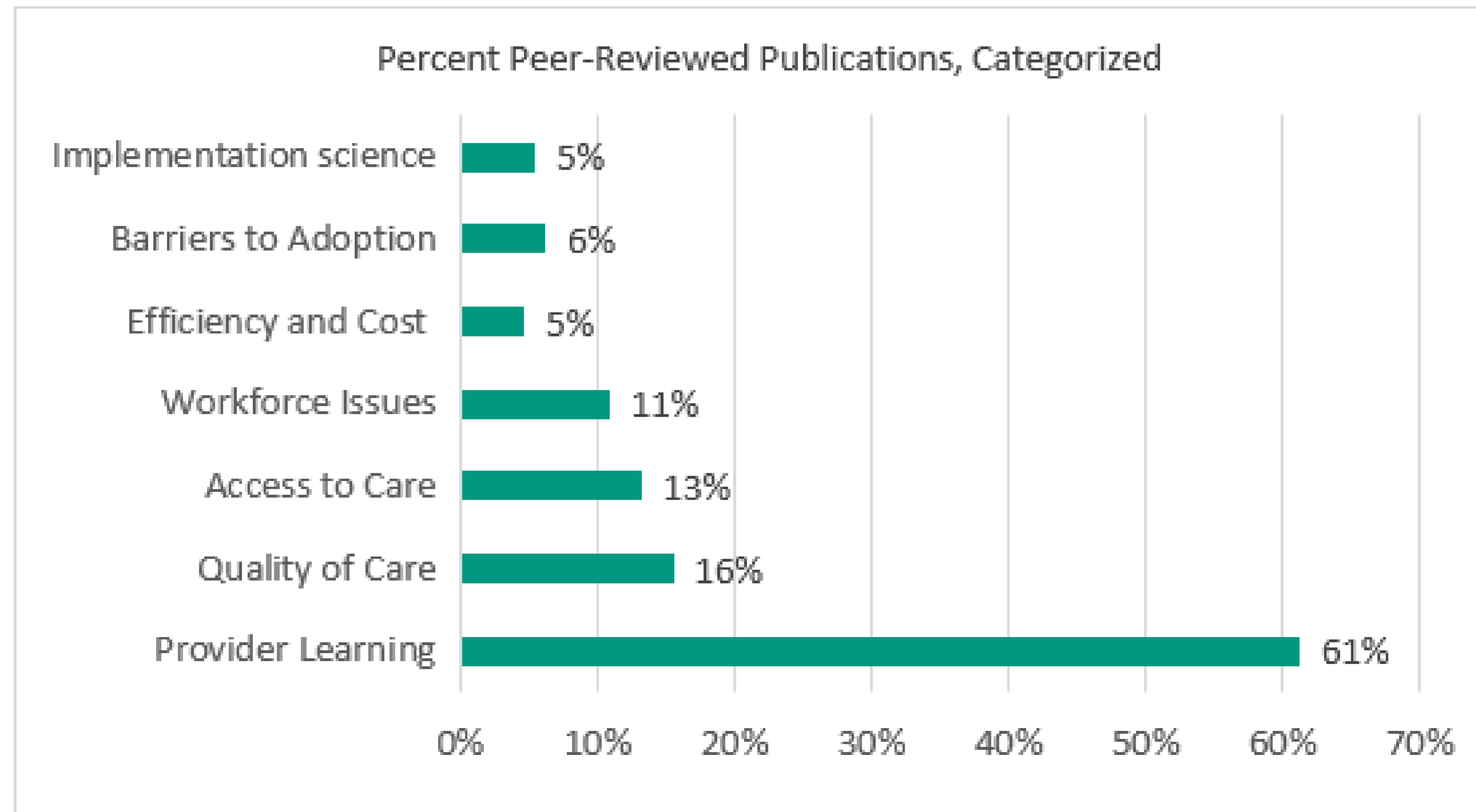
Includes: **3** program areas (ECHO, AHEC, Office of CE); **3** post-docs; **2** PhD students



ECHO Literature: Cost Effectiveness and Resource Utilization

Updated August 28, 2018

To date, we have cataloged **129 peer-reviewed publications** on the ECHO model™. The figure below shows article counts based on specific topic categories. Most of the literature on the ECHO model evaluates provider learning (satisfaction, self-efficacy, knowledge gained, practice change, etc.).





Idaho X-Waiver Utilization:

X-Waiver Training for Idaho Providers through ECHO Idaho

Prepared by the Idaho Office of Underserved and Rural Medical Research,
WWAMI Medical Education Program at the University of Idaho

Russell Baker, PhD

Madeline Casanova, PhD

Megan Nelson, PhD

Kathleen Palmer, BS

Lachelle Smith, MPP

This project was supported by Grant No. 2018-PM-BX-K123 awarded by the Bureau of Justice Assistance. The Bureau of Justice Assistance is a component of the Department of Justice's Office of Justice Programs, which also includes the Bureau of Justice Statistics, the National Institute of Justice, the Office of Juvenile Justice and Delinquency Prevention, the Office for Victims of Crime, and the SMART Office. Points of view or opinions in this document are those of the author and do not necessarily represent the official position or policies of the U.S. Department of Justice.

RESEARCH OPPORTUNITIES WITH ECHO IDAHO

Thank you!



Stay Connected

Register, schedule, and more: www.uidaho.edu/echo

Contact: echoidaho@uidaho.edu, 208-364-4072



Lachelle Smith, MPP
ECHO Idaho Director
208-364-4698
lachellesmith@uidaho.edu



Russell Baker, PhD
Associate Director of
Medical Research
208-885-2065
russellb@uidaho.edu

FACULTY SUCCESS SEMINARS



FALL 2021

- Sept. 8** Find Funding with Pivot, a Database of Grant Opportunities and More
- Sept. 15** M.J. Murdock Charitable Trust's Partners in Science Program
- Sept. 29** Partnering with the U of I McClure Center on Your Research: Why and How
- Oct. 6** Working with the Research and Faculty Development Team to Enhance the Competitiveness of Your Next Proposal
- Oct. 13** NSF CAREER: Essential Steps Toward Developing a Competitive Proposal
- Oct. 20** Improving Your Grant Competitiveness: Strategies for Resubmission
- Nov. 3** UPDATE: Mountain West Clinical and Translational Research-Infrastructure Network (MW CTR-IN) Funding
- Nov. 10** NSF S-STEM: Strategies for Competitive Proposals

SPRING 2022

- Jan. 19** Find Funding with Pivot, a Database of Grant Opportunities and More
- Jan. 26** Idaho Higher Education Research Council (HERC) Funding Opportunities
- Feb. 9** Lessons Learned from Serving on Proposal Review Panels
- Feb. 23** NSF Research Traineeship (NRT) Program: Strategies for Competitive Proposals
- Mar. 2** NSF CAREER: Getting Started on Your Proposal - *Now is the Time!*
- Mar. 30** First Impressions: Steps to Create a Captivating Proposal Title and First Page
- Apr. 6** Partnering with the U of I Project ECHO on Your Research: Why and How
- Apr. 13** Diversity, Equity, Inclusion, and Belonging: Broadening Participation in Funded Research



scan this to
zoom with us

ZOOM ID

uidaho.zoom.us/j/81586190096



**WE GUIDE THE DEVELOPMENT
OF COMPETITIVE EXTERNAL
GRANT PROPOSALS**

**Office of Research and
Faculty Development**

Email: ored-rfdteam@uidaho.edu

Website: uidaho.edu/orfd

THANK YOU FOR COMING!



QUESTIONS?

